

Supporting Material for

**Intrafibrillar mineralization of type I collagen by micelle-loaded
amorphous calcium phosphate nanoparticles**

Hongyu Xie^{a,†}, Jian Sun^{b,†}, Fangfang Xie^{a,**}, Shengbin He^{b*},

*a. College of Stomatology, Hospital of Stomatology, Guangxi Medical University,
Nanning, Guangxi 530021, P. R. China.*

*b. Key Laboratory of Longevity and Aging-related Diseases of Chinese Ministry of
Education, Guangxi Colleges and Universities Key Laboratory of Biological
Molecular Medicine Research, School of Basic Medical Sciences, Guangxi Medical
University, Nanning, Guangxi 530021, P. R. China.*

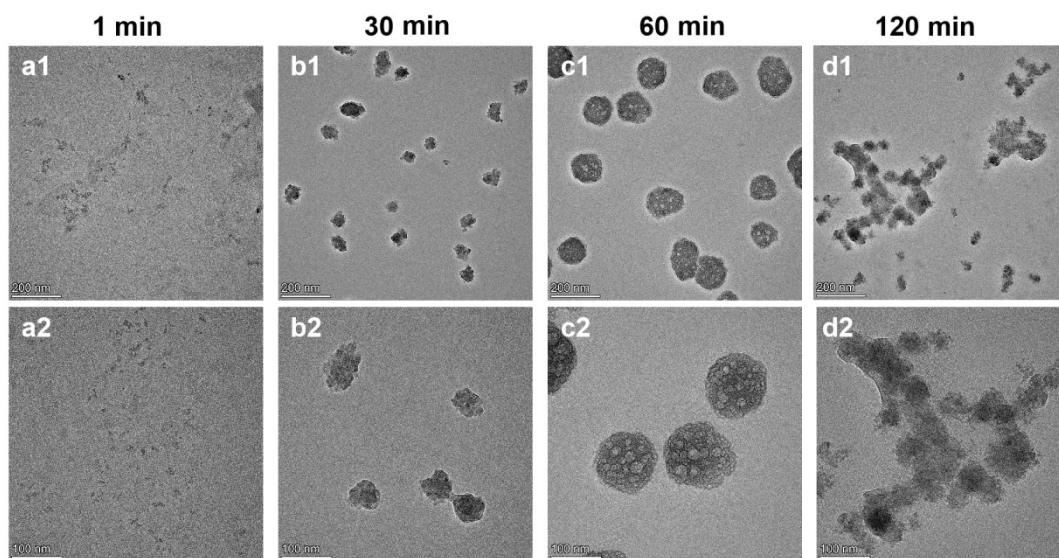
[†]These authors contributed equally to this work.

* Corresponding author.

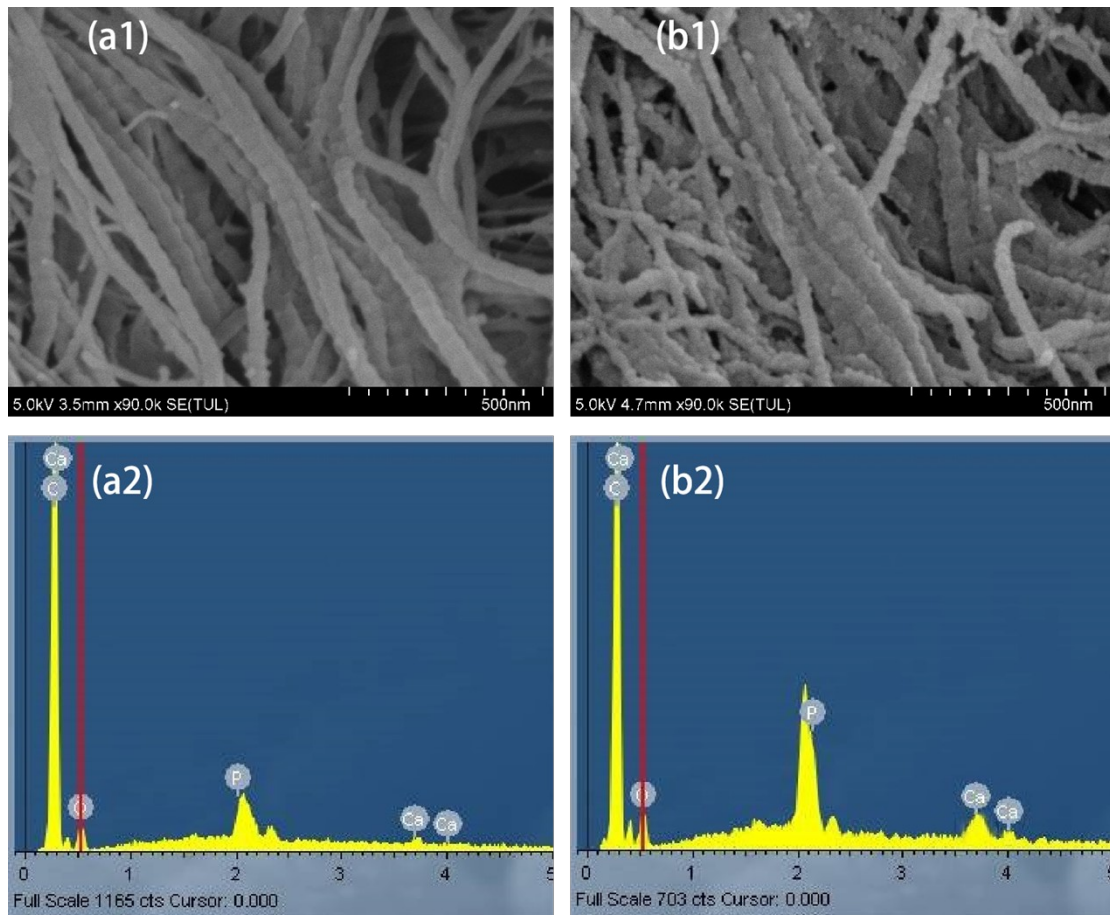
** Corresponding author.

E-mails addresses: comhsb@163.com (Shengbin He); xiedualfang@163.com
(Fangfang Xie)

This Supporting Information includes **Supplementary Figure S1 and Figure S2.**



Supplementary Fig. S1 Representative TEM images of the ACP/CPAMAM with various reaction times.



Supplementary Fig. S2. TEM image and energy spectrum analysis of the demineralized dentin (a1-a2) and remineralized dentin (b1-b2).