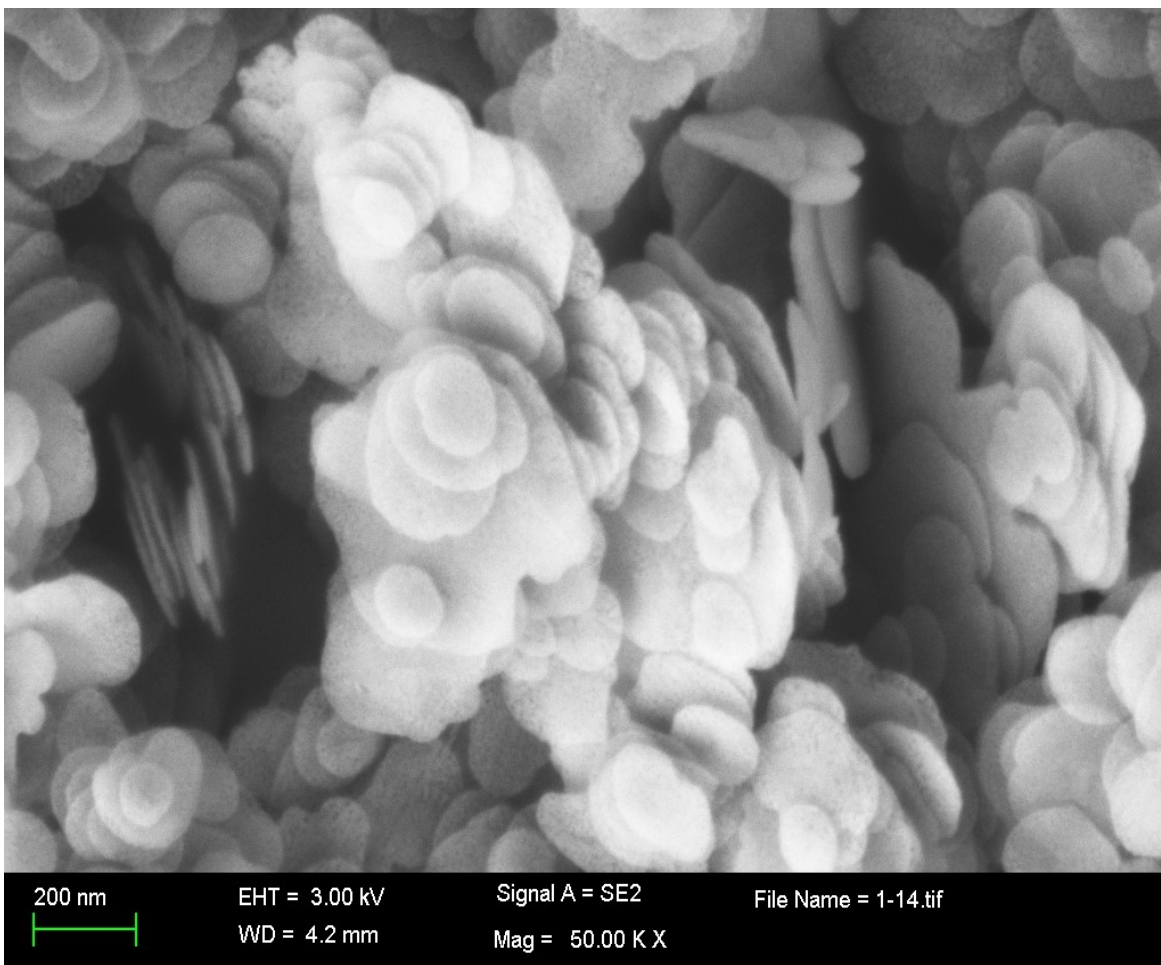
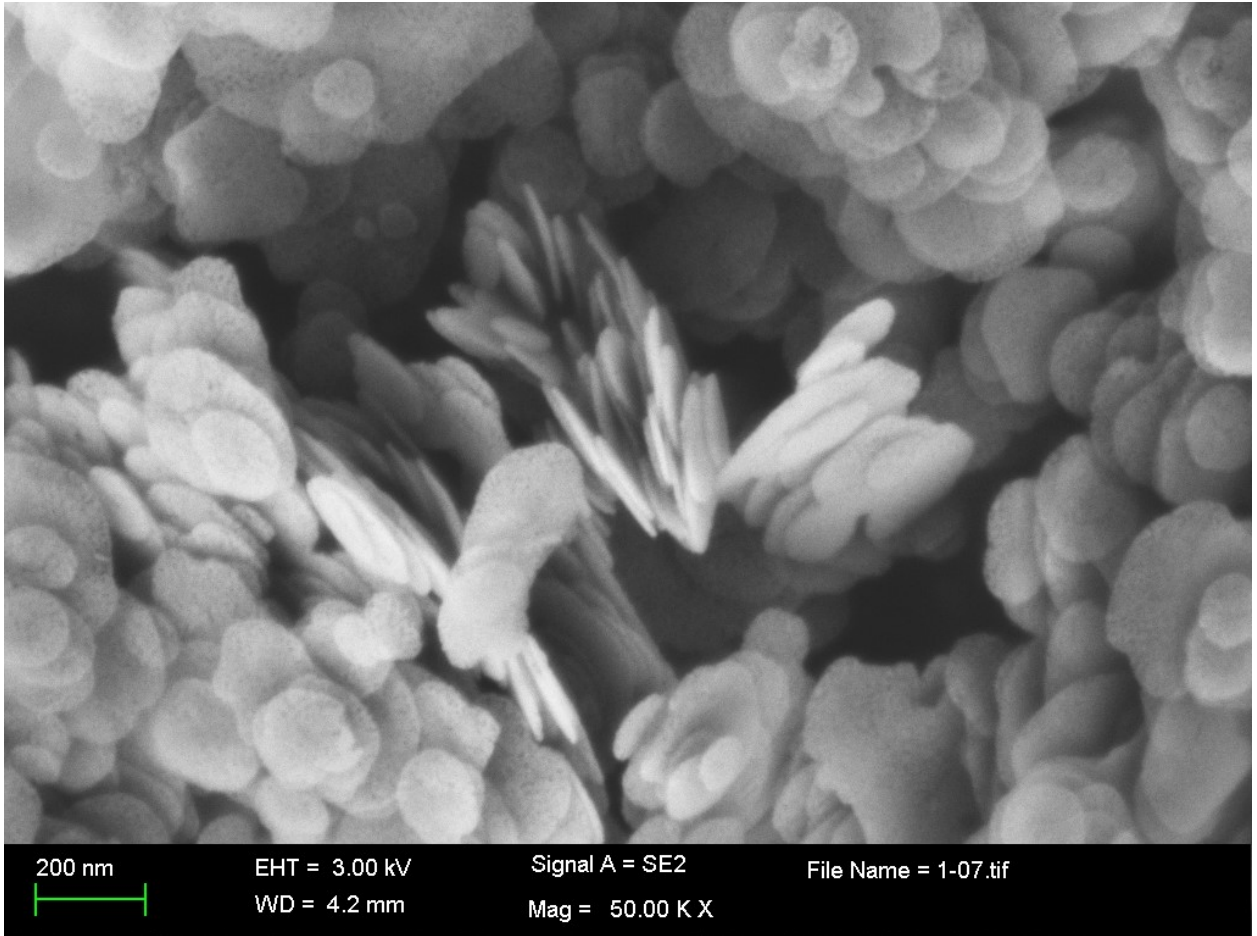
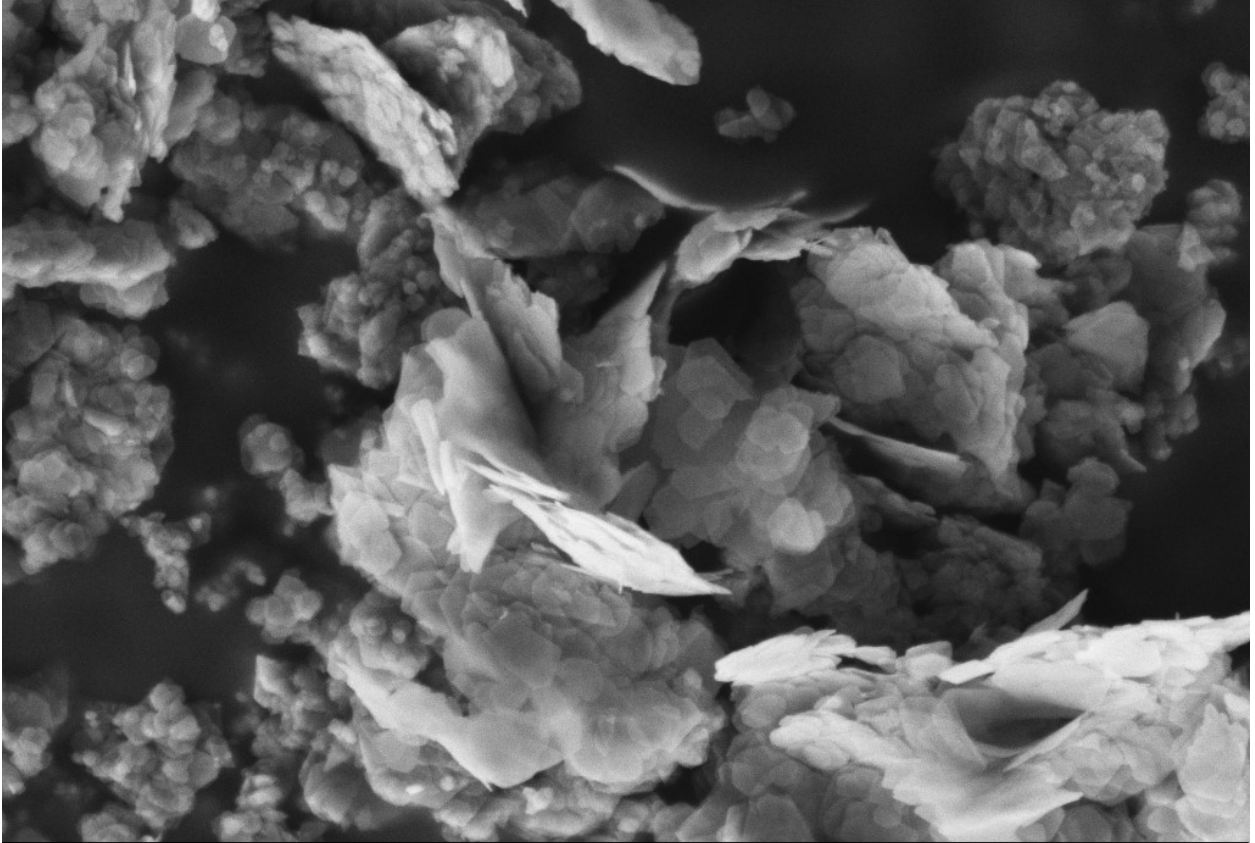


SEM images of MNO-0





SEM images of MNO-5



200 nm



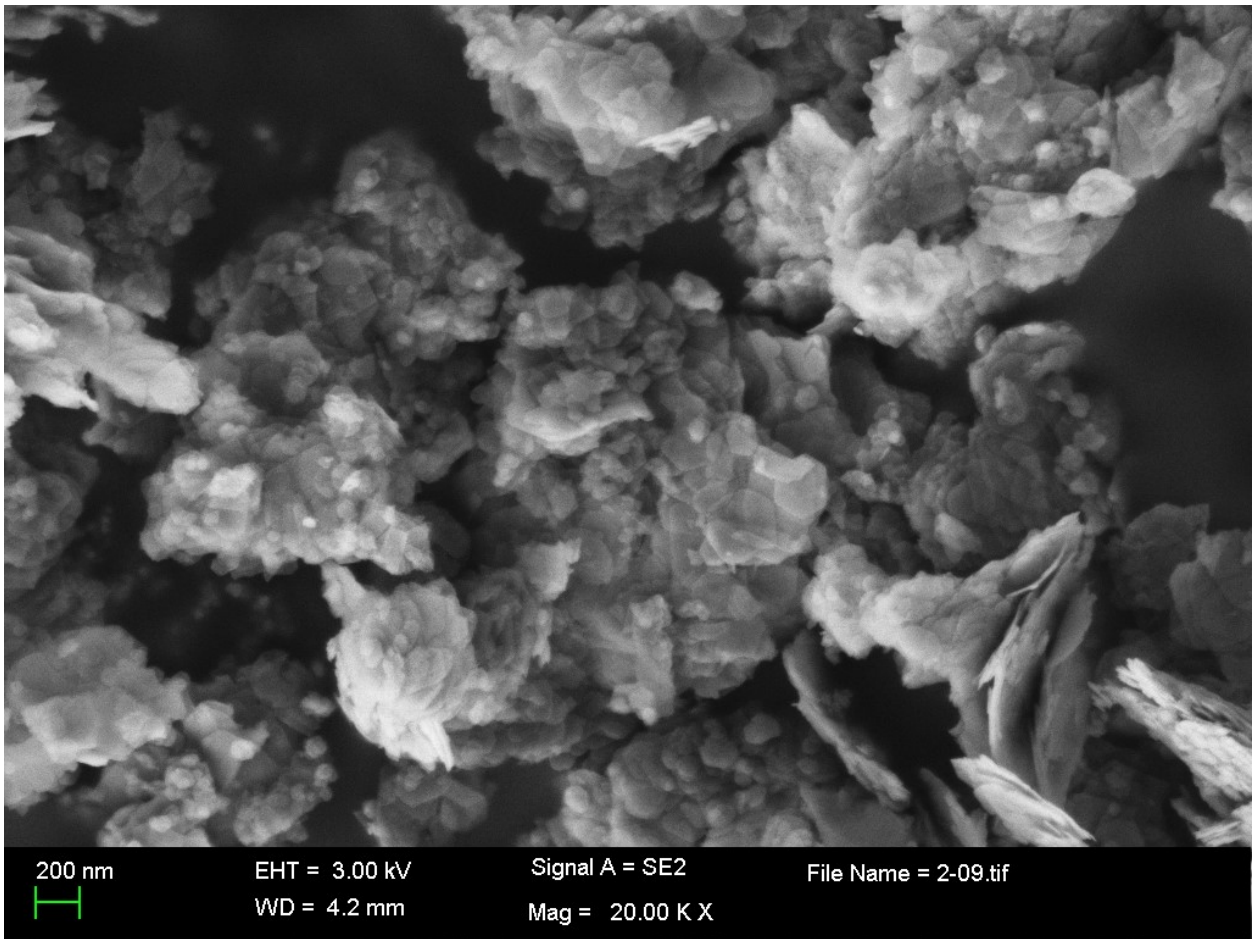
EHT = 3.00 kV

WD = 4.2 mm

Signal A = SE2

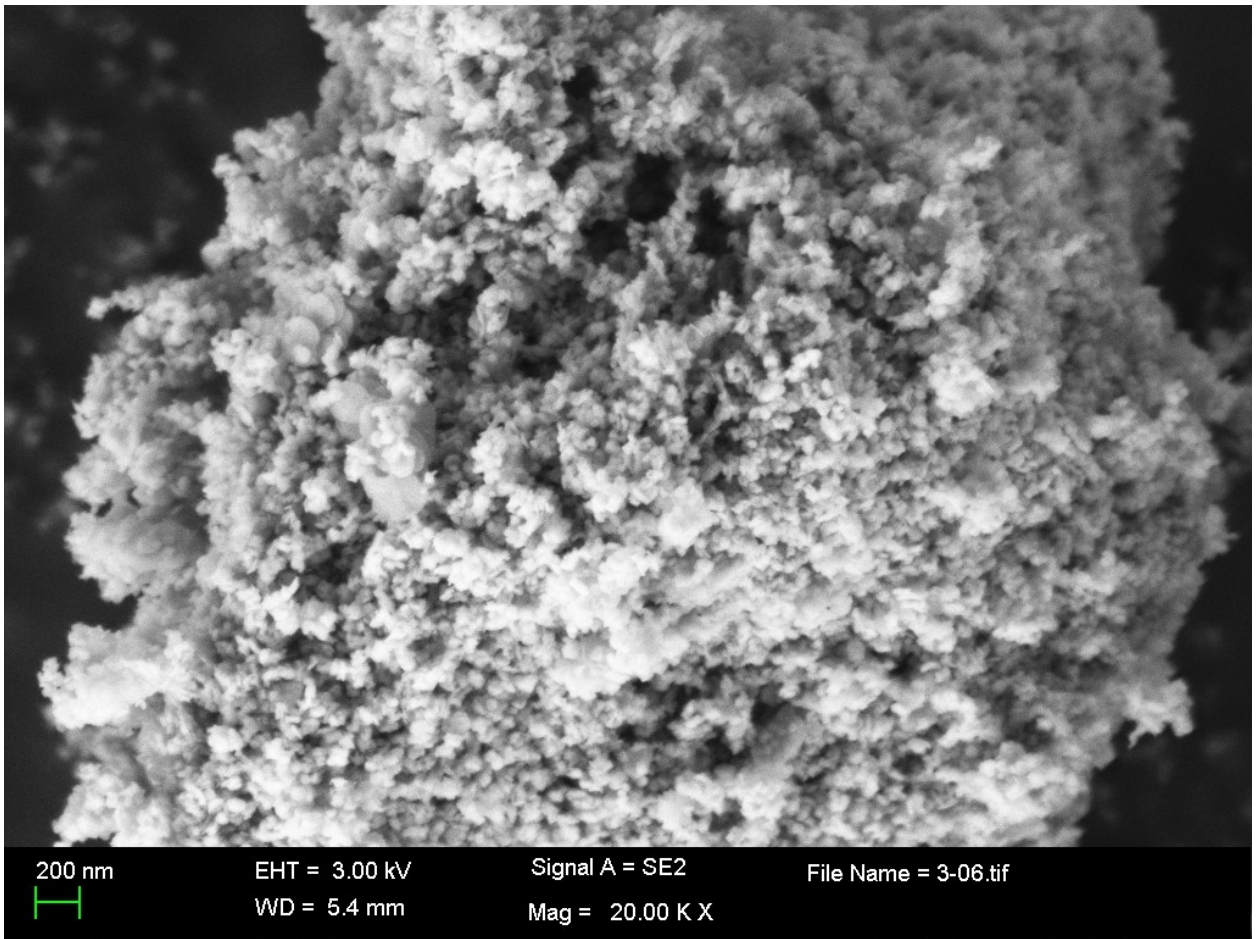
Mag = 20.00 K X

File Name = 2-03.tif



SEM images of MNO-10





200 nm



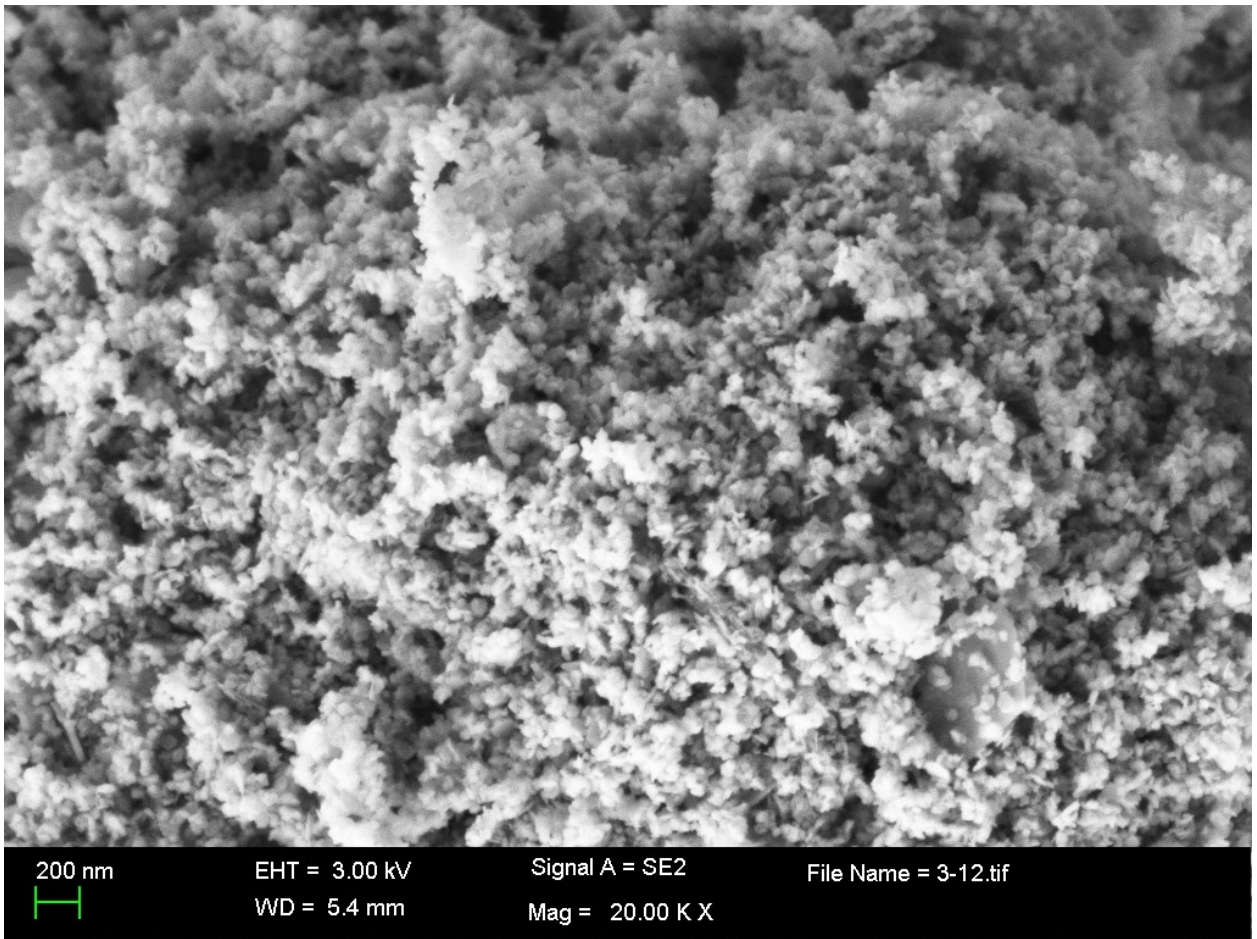
EHT = 3.00 kV

WD = 5.4 mm

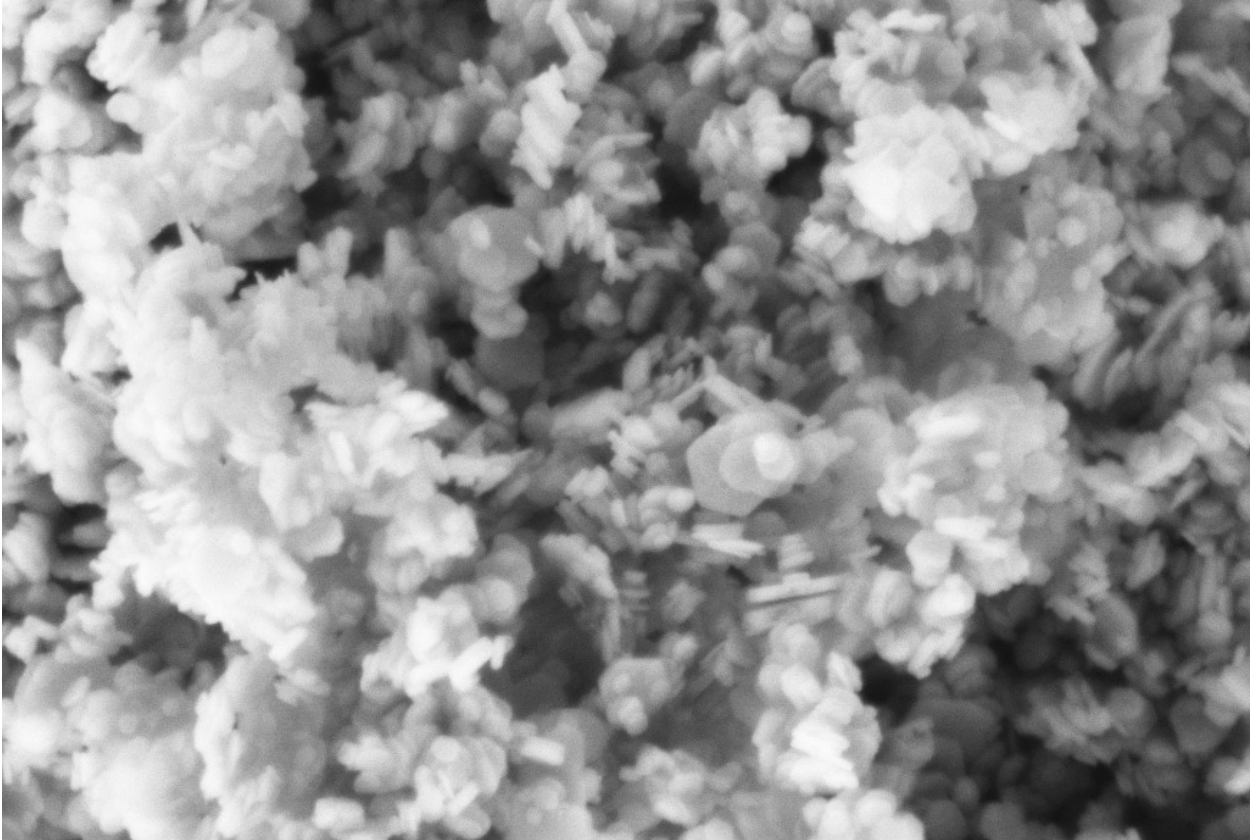
Signal A = SE2

Mag = 20.00 K X

File Name = 3-06.tif



SEM images of MNO-15



200 nm



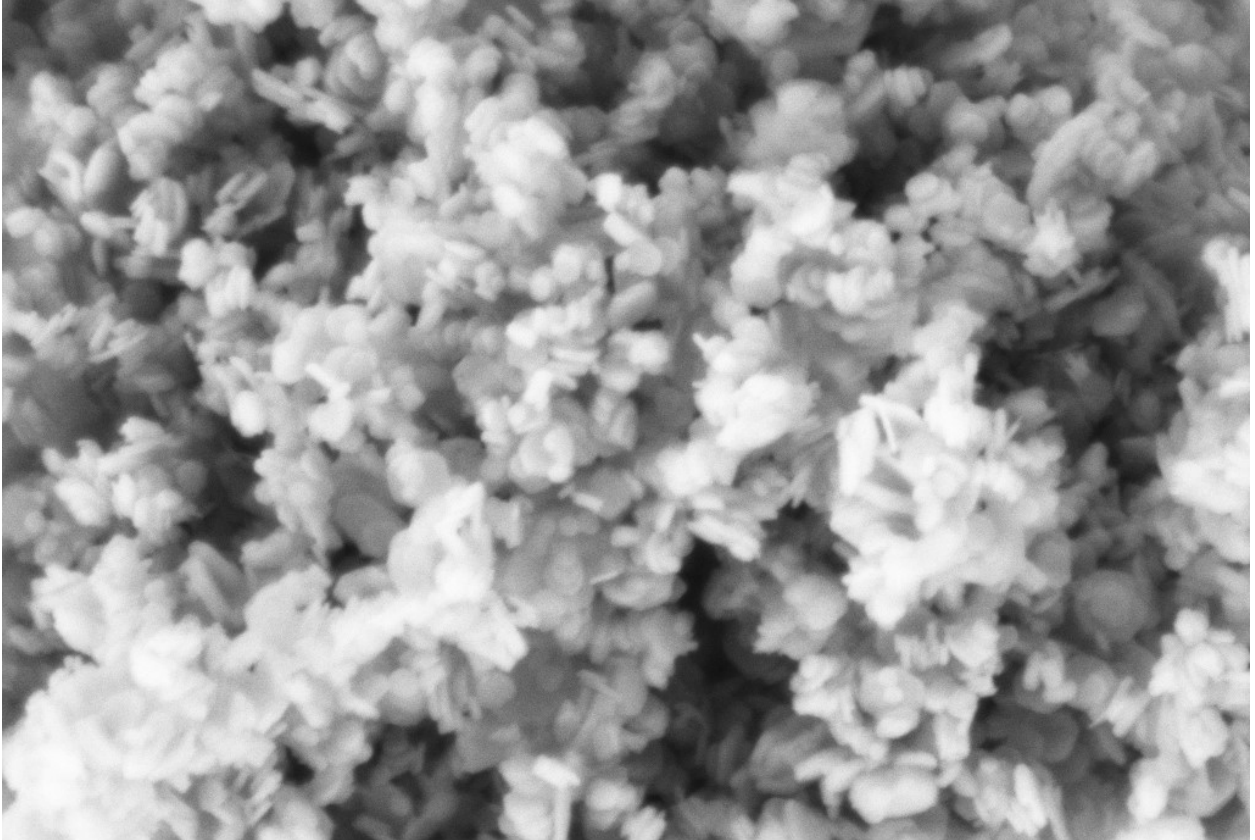
EHT = 3.00 kV

WD = 4.6 mm

Signal A = SE2

Mag = 50.00 K X

File Name = 4-07.tif



200 nm



EHT = 3.00 kV

WD = 4.6 mm

Signal A = SE2

Mag = 50.00 K X

File Name = 4-14.tif