

# SUPPORTING INFORMATION

## **The effect of Si/Al ratio of ZSM-12 zeolite on its morphology, acidity and crystal size for the catalytic performance in HTO process**

Samira Soltani <sup>a</sup>, Akbar Zamaniyan <sup>b\*</sup>, Jafar Towfighi Darian <sup>a</sup>, Saeed Soltanali <sup>b</sup>

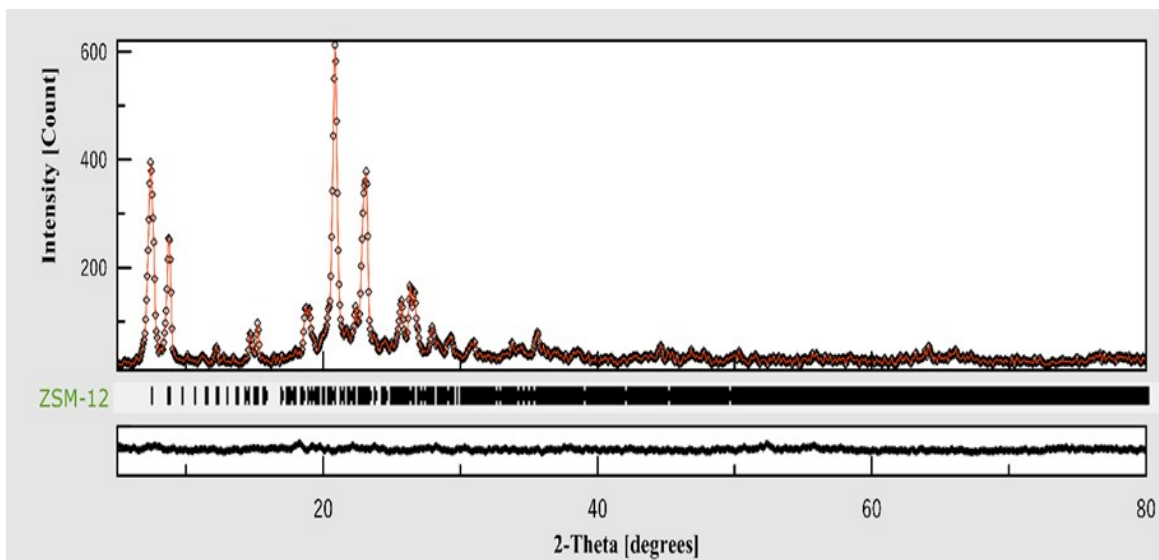
---

\* Corresponding author.

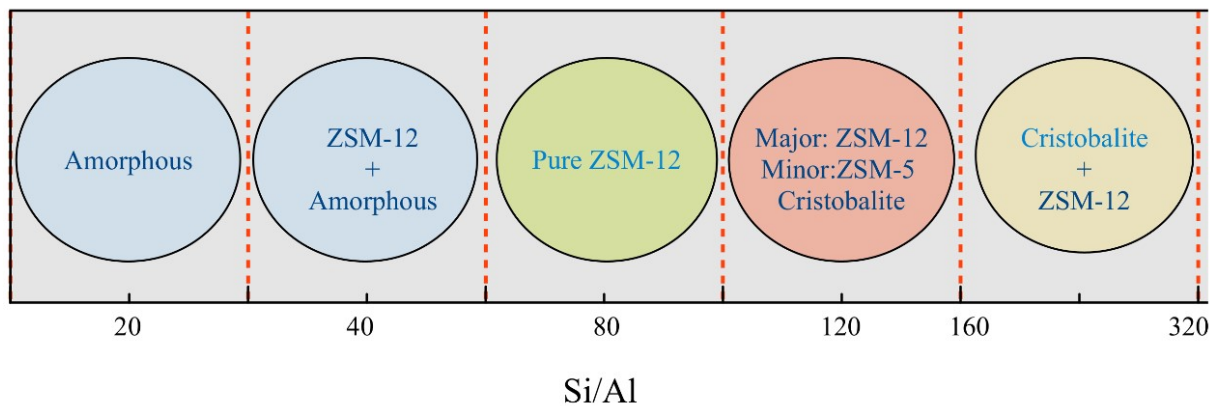
E-mail address: [zamaniyana@ripi.ir](mailto:zamaniyana@ripi.ir) (A. Zamaniyan).

<sup>a</sup> Department of Chemical Engineering, Tarbiat Modares University, Tehran, Iran

<sup>b</sup> Catalysis Technologies Development Division, Research Institute of Petroleum Industry (RIPI), Tehran, Iran



**Fig. S1.** simulation of XRD pattern (Z80 sample with MAUD software)



**Fig. S2.** Schematic of the effect of Si/Al ratio on the phase structure of zeolite

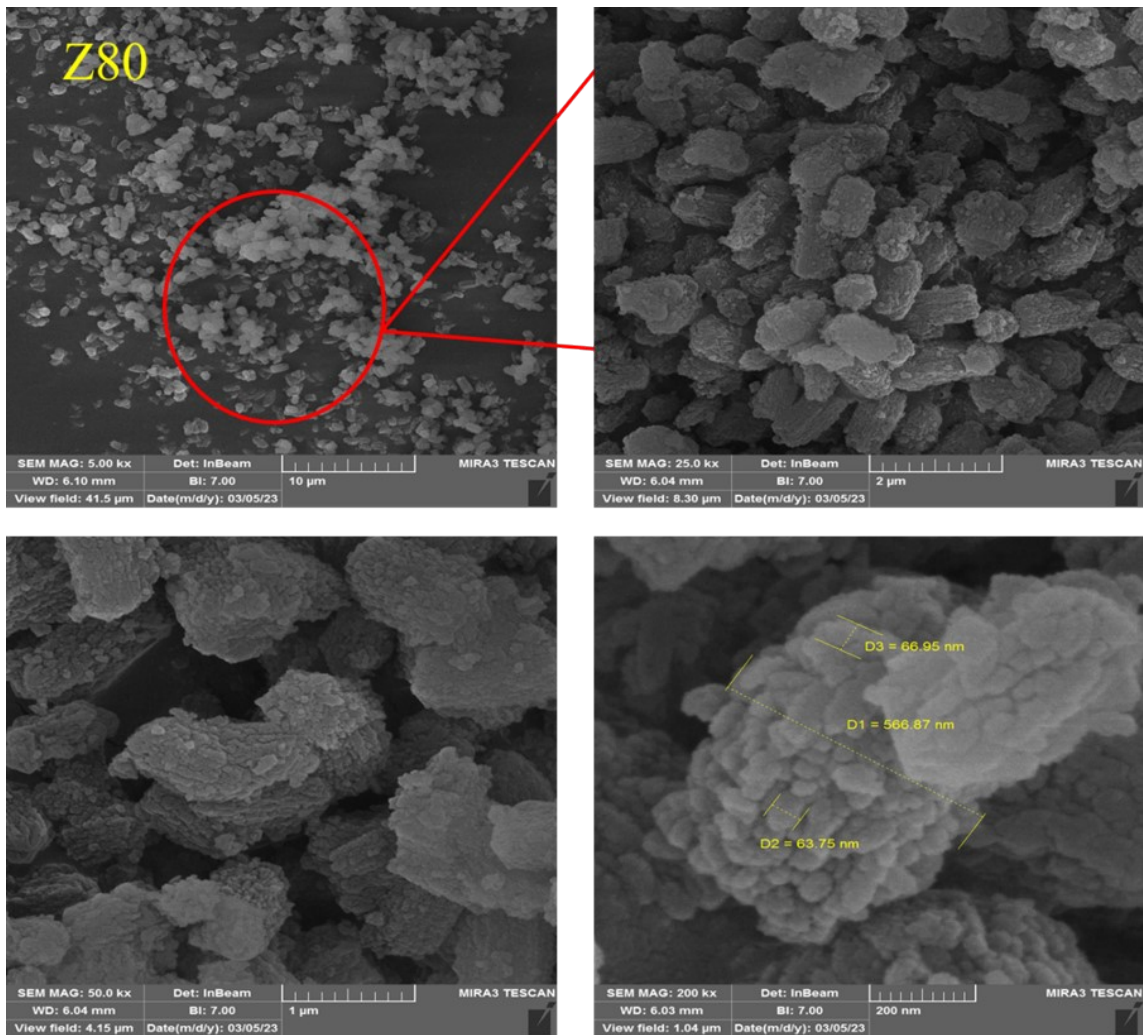
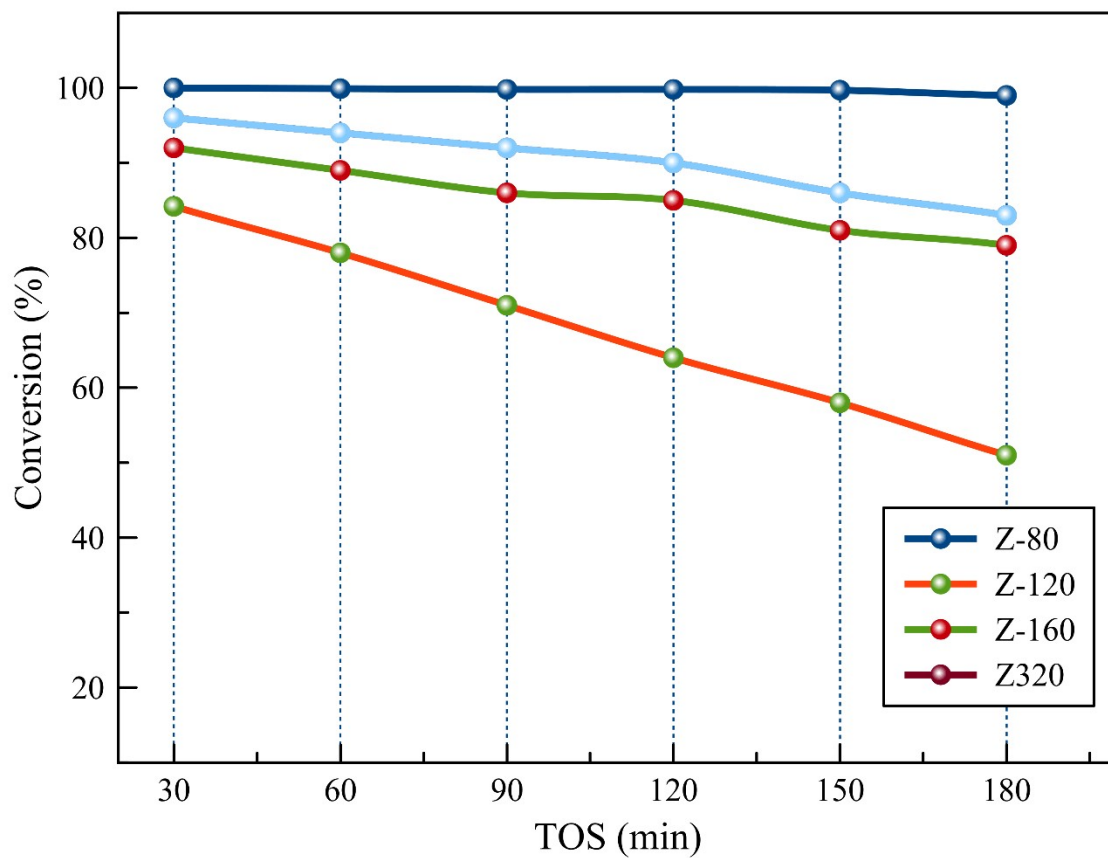


Fig. S3. FESEM images with different scales (Z80)



**Fig. S4** Performance of the synthesized catalysts over time