

## Supplementary information

# Confocal Raman Microscopy to evaluate anisotropic structures and hydration development. Methodological considerations

J.F. Dahl, S. B. Gregersen, U. Andersen, M. Corredig

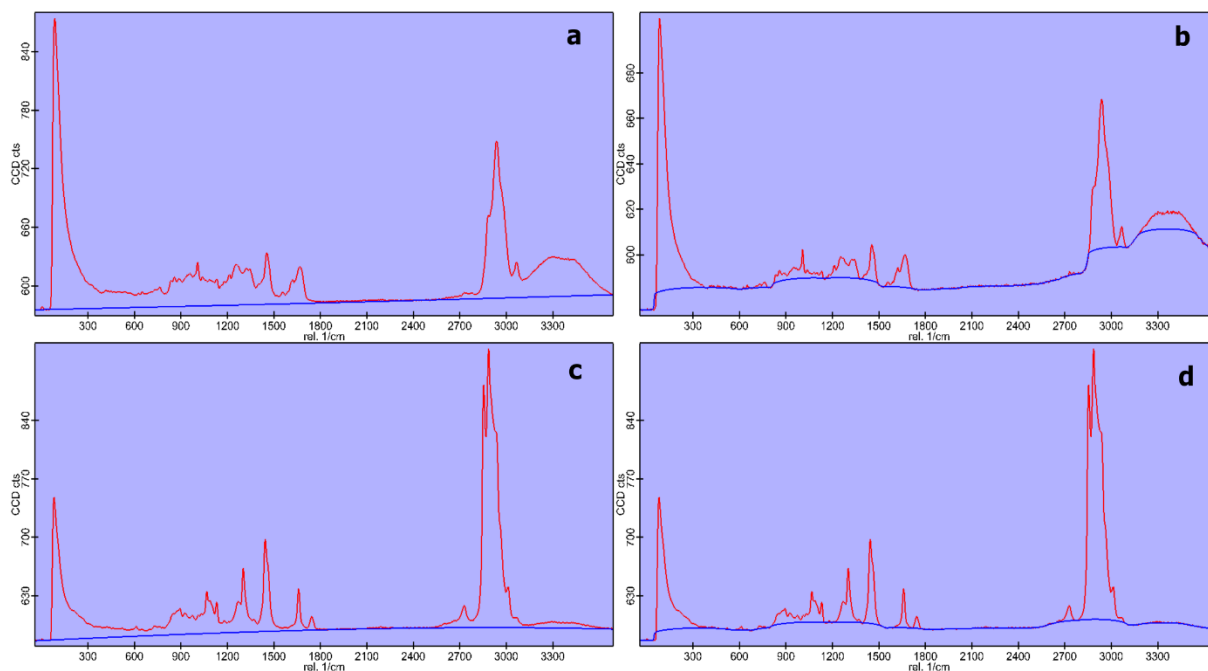


Figure S1: Illustration of two of the background subtractions possible with the software WITec Project 5.1, as applied to the protein (a, b) or lipid (c, d) region of the spectrum. 2<sup>nd</sup> polynomial background removal (a and c) or the Shape function with a shape size of 100 (b and d).