

Supporting Information

Covalent segmented polymer networks composed of poly(2-isopropenyl-2-oxazoline) and selected aliphatic polyesters: Designing biocompatible amphiphilic materials containing degradable blocks.

Bartosz Kopka^a, Bartłomiej Kost^a, Andrzej Pawlak^a, Agata Tomaszewska^{b,c}, Agnieszka Krupa^b, Malgorzata Basko^{a*}

Table of contents:

Figure S1. PiPOx characterization: A) SEC (H ₂ O), B) ¹ H NMR and C) ¹³ C NMR spectra (400 MHz, CDCl ₃).....	2
Figure S2. ¹ H NMR spectra of: A) starting and B) modified poly(lactide) diol: HOOC-PLA-COOH (400 MHz, CDCl ₃).....	3
Figure S3. ¹ H NMR spectra of: A) starting and B) modified poly(caprolactone) diol: HOOC-PCL-COOH (400 MHz, CDCl ₃).	4
Figure S4. ¹³ C NMR spectra of: modified polyester diols: A) HOOC-PCL-COOH and B) HOOC-PLA-COOH (400 MHz, CDCl ₃).	5
Figure S5. SEC curves of starting and modified polyester diols (CH ₂ Cl ₂).....	6
Figure S6. ¹ H NMR spectrum of the soluble fraction of: A) PCL- <i>l</i> -PiPOx and B) PLA- <i>l</i> -PiPOx (400 MHz, CDCl ₃).....	7
Figure S7. The mechanism for adduct formation with the ester-amide structure obtained by ring-opening oxazoline with a reagent containing carboxyl group.	7
Figure S8. Physical appearance of: A) as-prepared and B) dried (after extraction) PLA ₃₀₀₀ - <i>l</i> -PiPOx-2 and PCL ₃₀₀₀ - <i>l</i> -PiPOx-2 networks.....	8
Figure S9. Physical appearance of: A) PLA ₃₀₀₀ - <i>l</i> -PiPOx-2 and PCL ₃₀₀₀ - <i>l</i> -PiPOx-2 networks swollen in water and B) PLA ₃₀₀₀ - <i>l</i> -PiPOx-4 and PCL ₃₀₀₀ - <i>l</i> -PiPOx-4 networks swollen in DMF.	8
Figure S10. TGA curves of the PLA- <i>l</i> -PiPOx and PCL- <i>l</i> -PiPOx networks and starting building blocks: PiPOx, HOOC-PLA ₃₀₀₀ -COOH, HOOC-PCL ₃₀₀₀ -COOH.	9

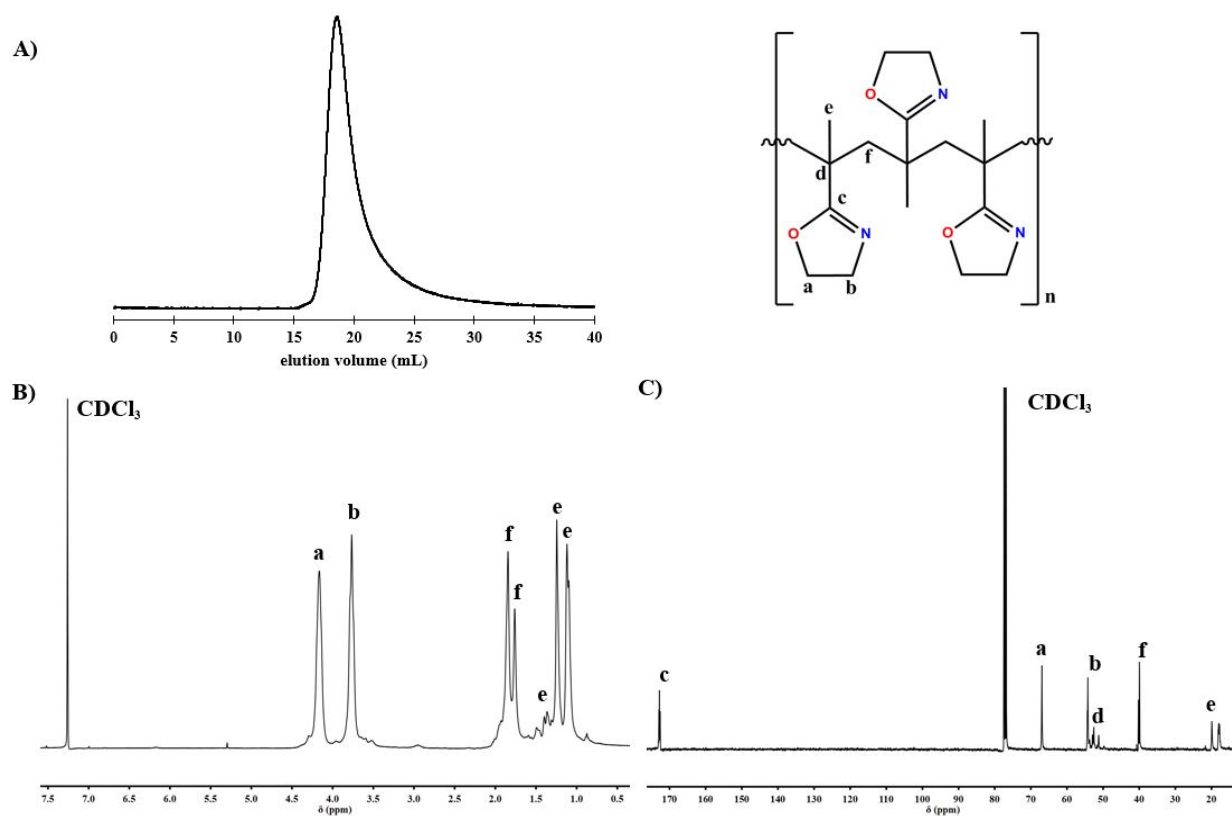


Figure S1. PiPOx characterization: A) SEC (H_2O), B) ^1H NMR and C) ^{13}C NMR spectra (400 MHz, CDCl_3).

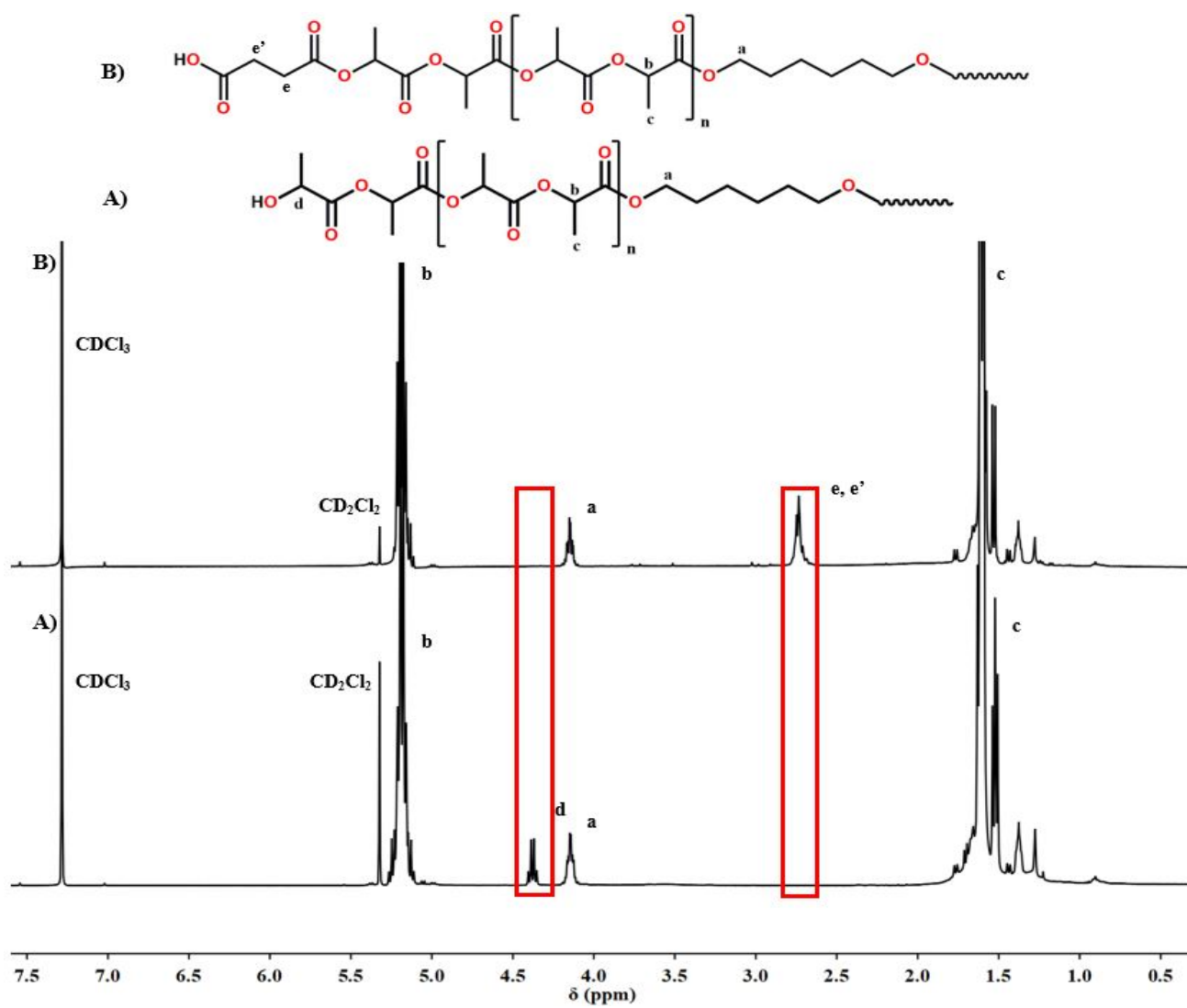


Figure S2. ^1H NMR spectra of: A) starting and B) modified poly(lactide) diol: HOOC-PLA-COOH (400 MHz, CDCl_3).

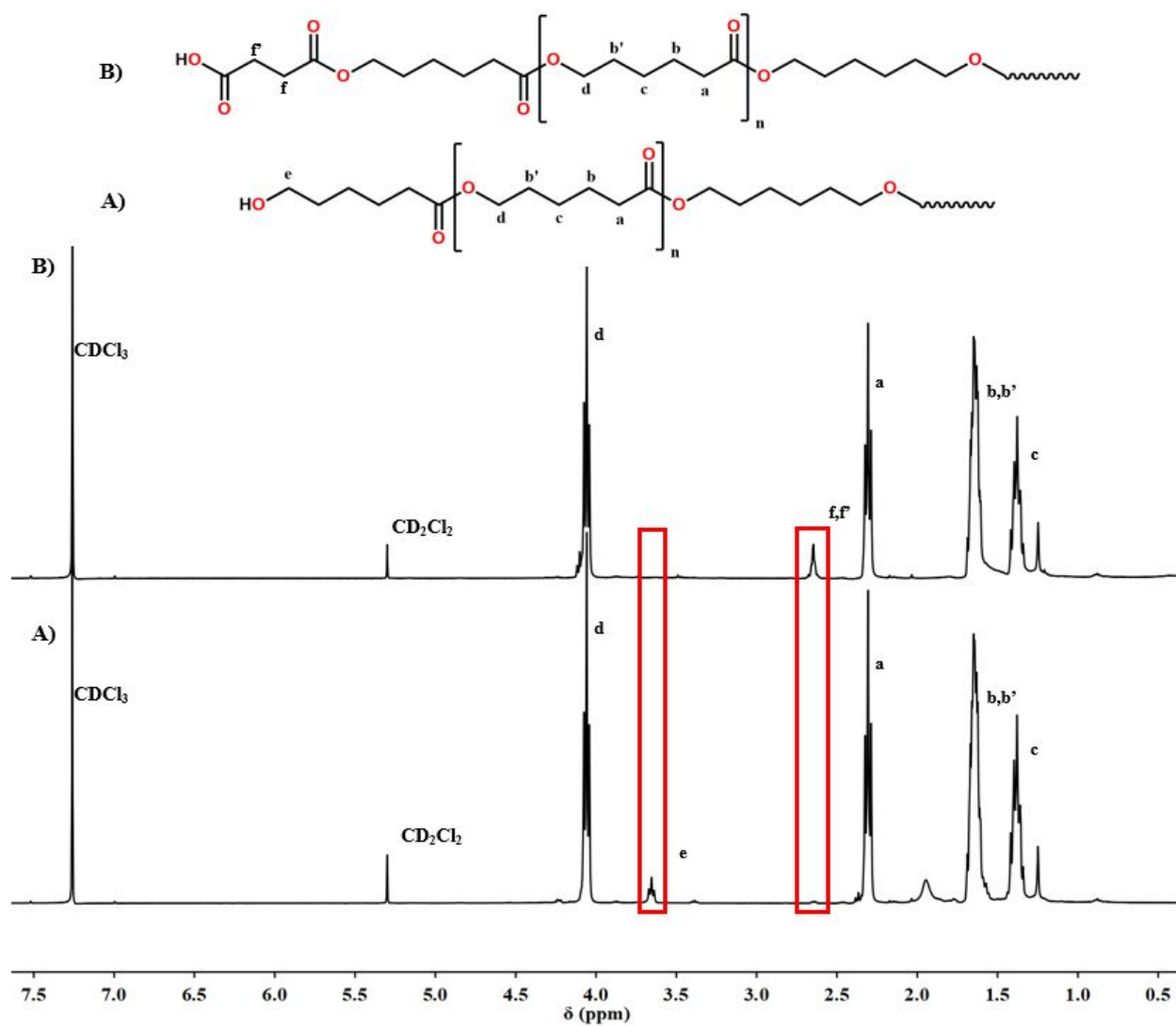
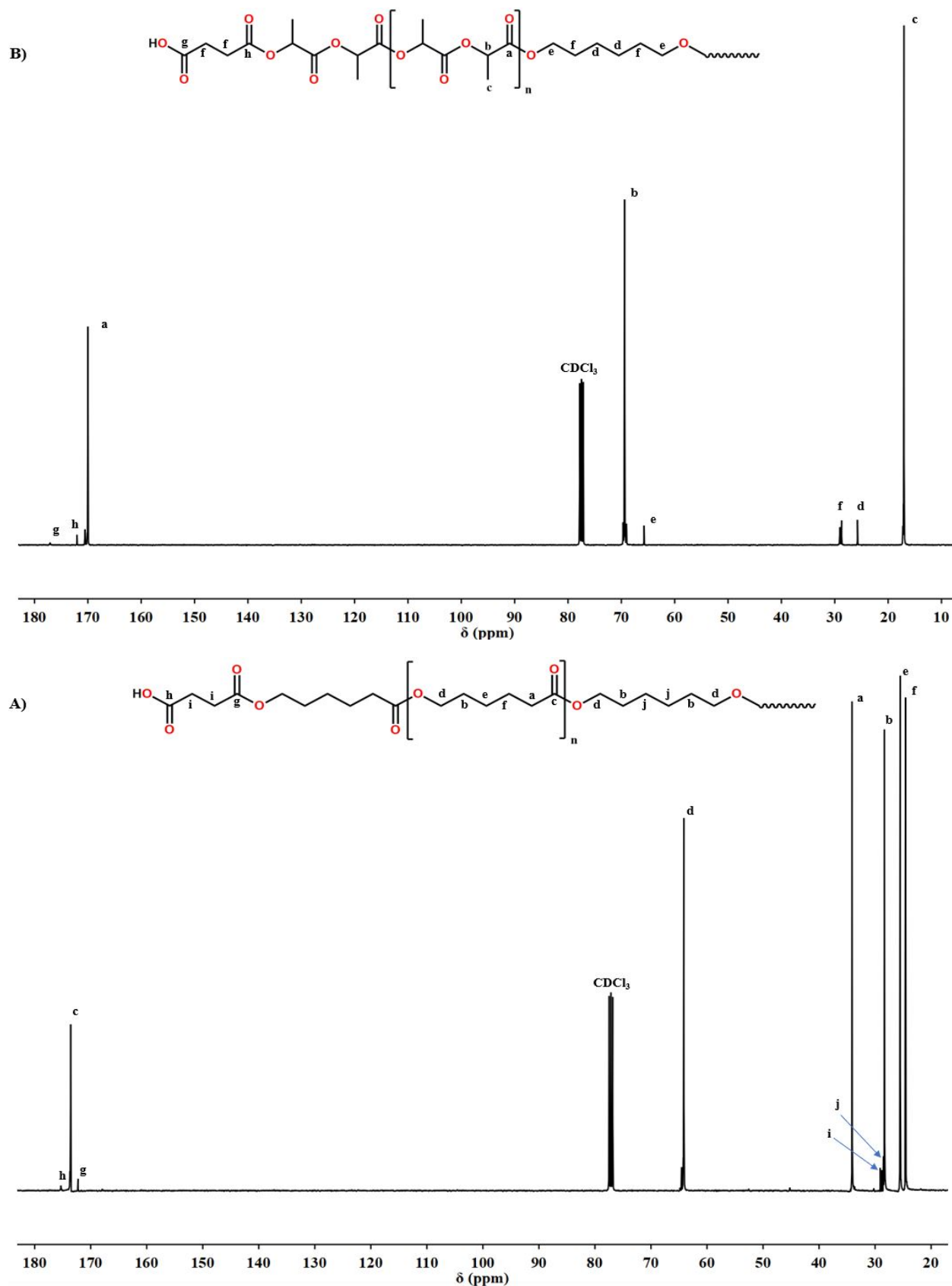


Figure S3. ^1H NMR spectra of: A) starting and B) modified poly(caprolactone) diol: HOOC-PCL-COOH (400 MHz, CDCl_3).



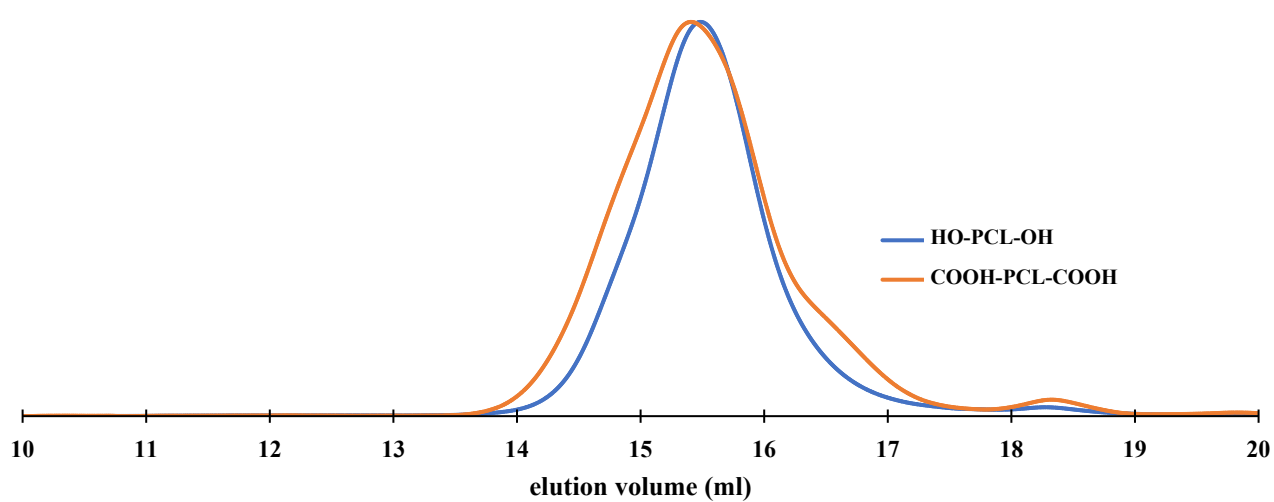
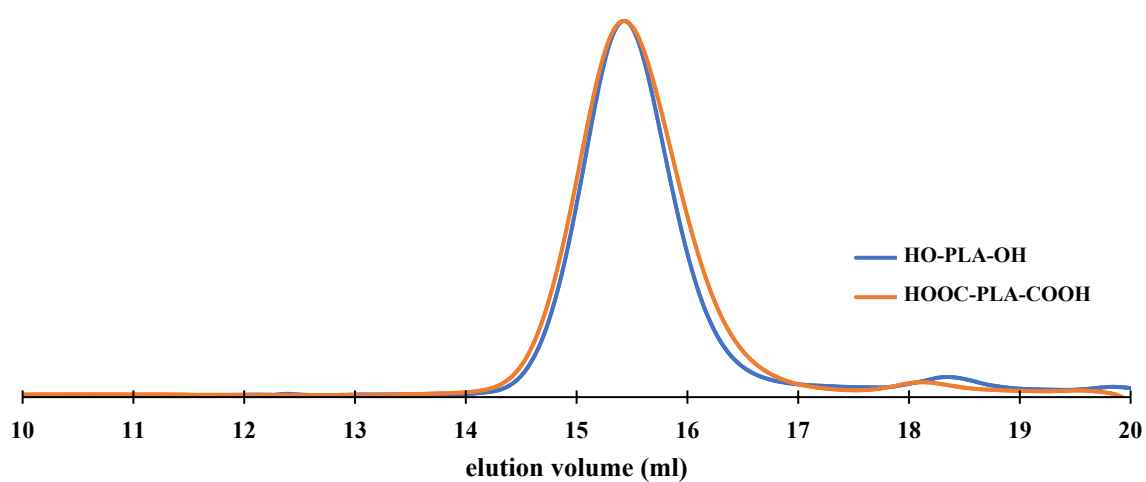


Figure S5. SEC curves of starting and modified polyester diols (CH_2Cl_2).

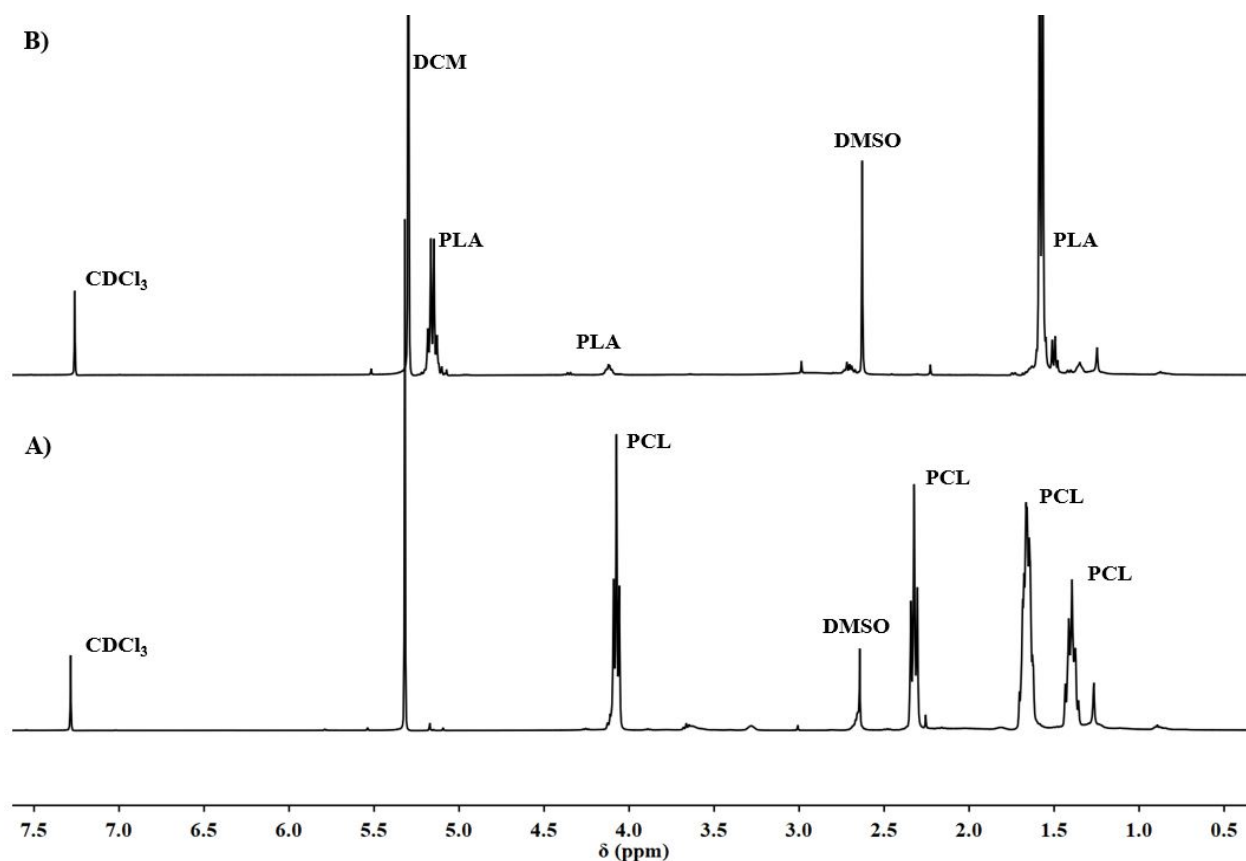


Figure S6. ^1H NMR spectrum of the soluble fraction of: A) PCL-*l*-PiPOx and B) PLA-*l*-PiPOx (400 MHz, CDCl_3).

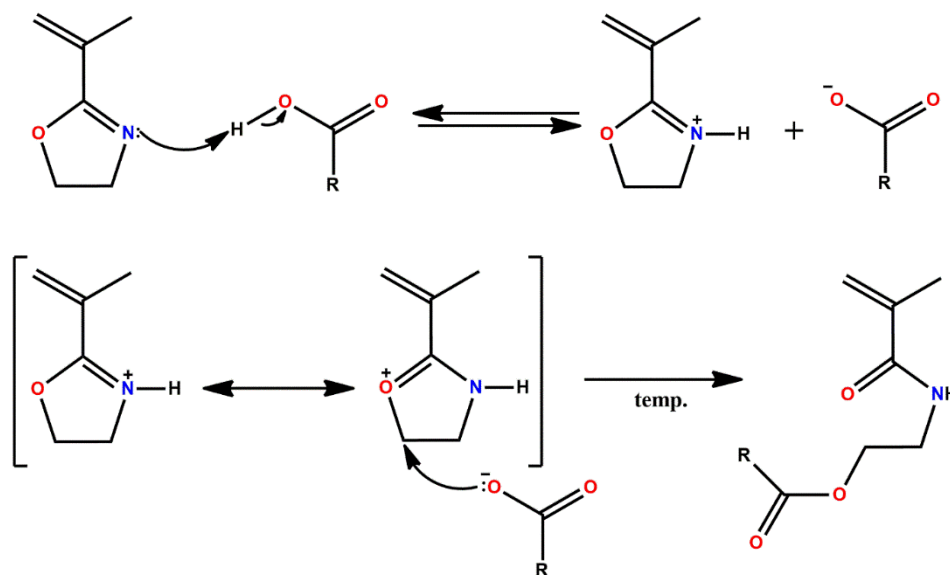


Figure S7. The mechanism for adduct formation with the ester-amide structure obtained by ring-opening oxazoline with a reagent containing carboxyl group. [Reproduced from ref. 33 with permission from Polymer Chemistry, copyright 2022]

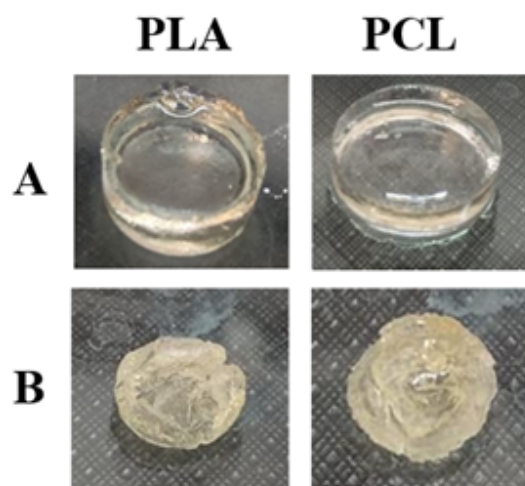


Figure S8. Physical appearance of: A) as-prepared and B) dried (after extraction) PLA_{3000} -*l*-PiPOx-2 and PCL_{3000} -*l*-PiPOx-2 networks.

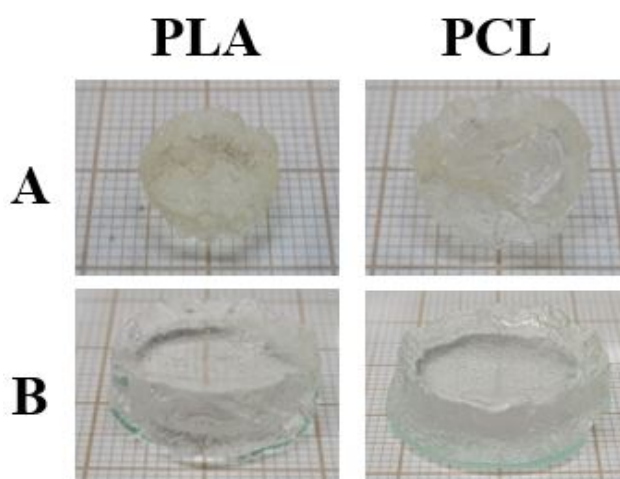


Figure S9. Physical appearance of: A) PLA_{3000} -*l*-PiPOx-2 and PCL_{3000} -*l*-PiPOx-2 networks swollen in water and B) PLA_{3000} -*l*-PiPOx-4 and PCL_{3000} -*l*-PiPOx-4 networks swollen in DMF.

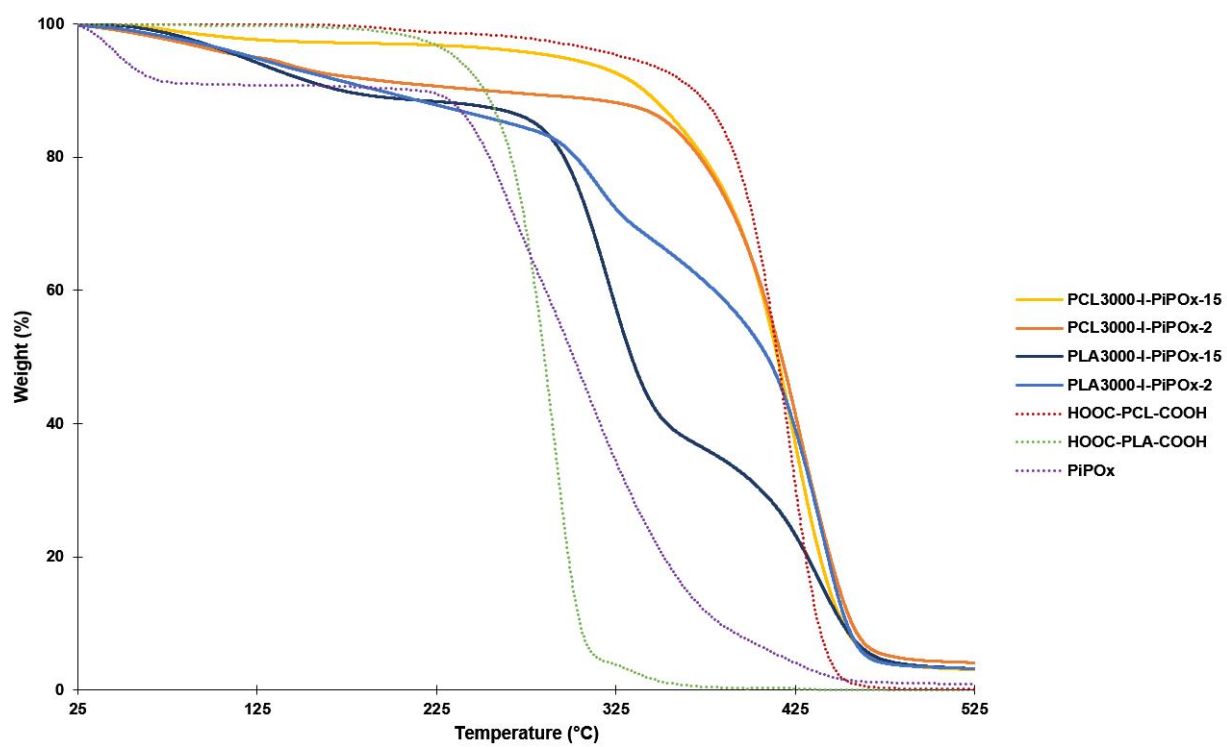


Figure S10. TGA curves of the PLA-*l*-PiPO_x and PCL-*l*-PiPO_x networks and starting building blocks: PiPO_x, HOOC-PLA₃₀₀₀-COOH, HOOC-PCL₃₀₀₀-COOH.