

Supporting Information

Sequential intervention of anti-inflammatory and osteogenesis with silk fibroin coated polyethylene terephthalate artificial ligaments for anterior cruciate ligament reconstruction

Ni Chen^{1,†}, Wenhe Jin^{2,†}, Han Gao², Jiachan Hong¹, Luyi Sun², Jinrong Yao¹, Xin

Chen¹, Jun Chen^{2,*}, Shiyi Chen^{2,*}, Zhengzhong Shao^{1,*}

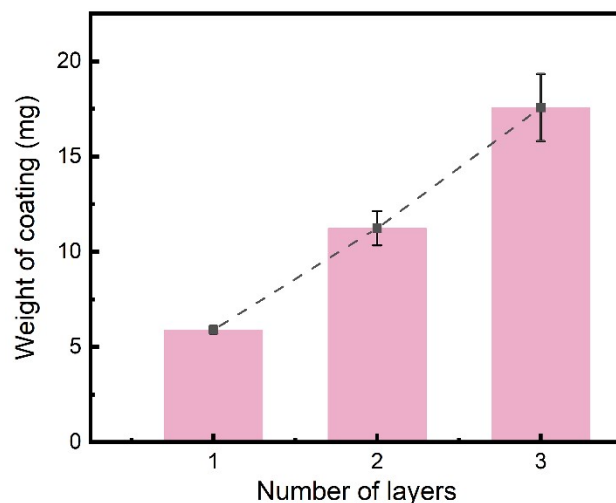


Figure S1. Weight change of RSF coating as the increase of the number of layers.

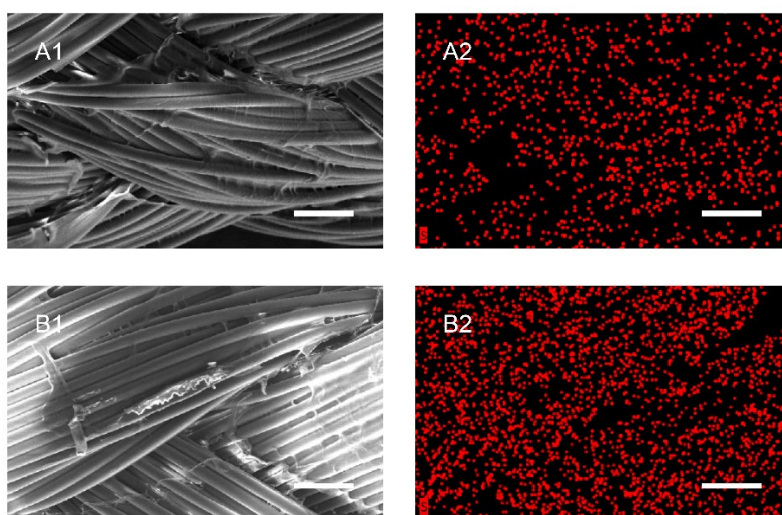


Figure S2. EDS results of H@PET (A1: SEM image; A2: S element mapping) and H/B@PET (B1: SEM image; B2: S element mapping). Scale bar is 100 μ m.

Table S1. EDS results of PET, H@PET and H/B@PET.

| Samples | C (%) | O (%) | N (%) | S (%) |
|---------|-------|-------|-------|-------|
| PET | 63.9 | 36.1 | - | - |
| H@PET | 58.78 | 28.29 | 12.79 | 0.14 |
| H/B@PET | 58.97 | 29.22 | 11.66 | 0.16 |