

Supplementary Materials for

Melatonin and Calcium Phosphate Crystal-loaded Poly(L-lactic acid) Porous Microspheres Reprogram Macrophages to Improve Bone Repair

Authors

Yiyang Huang ^{a,†}, Yichang Xu ^{a,†}, Ziyang Huang ^{a,†}, Jiannan Mao ^{a,b,†}, Yujian Hui ^{a,b}, Min Rui ^{a,b}, Xinzhao Jiang ^a, Jie Wu ^a, Zhouye Ding ^a, Yu Feng ^{a,*}, Yong Gu ^{a,*} and Liang Chen ^{a,*}

Affiliations

^aDepartment of Orthopedics, The First Affiliated Hospital of Soochow University, Orthopedic Institute, Soochow University, 188 Shizi Road, Suzhou, Jiangsu, 215006, PR China

^bDepartment of Orthopaedics, Jiangyin Clinical College, Xuzhou Medical University, No.163 Shoushan Road, Jiang Yin 214400, China

*Correspondence: fengyu@suda.edu.cn, guyong1019@suda.edu.cn,
chenliang7737@suda.edu.cn

† These authors contributed equally to the work.

This file includes:

Figures S1. to S6.

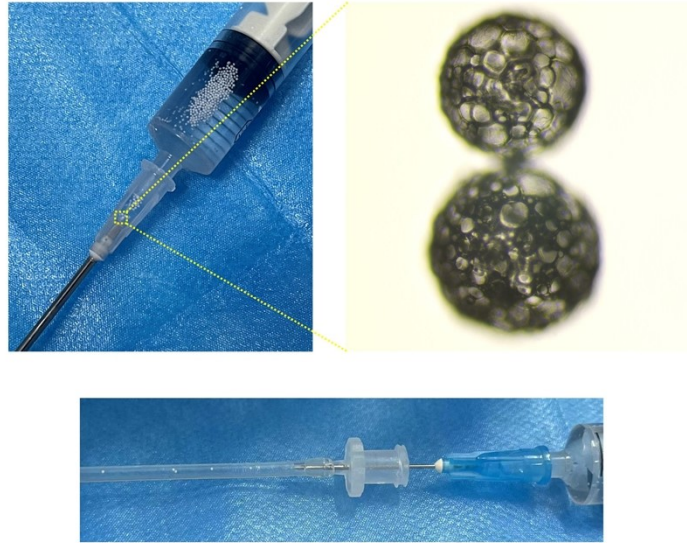


Figure S1. Image of microsphere injection

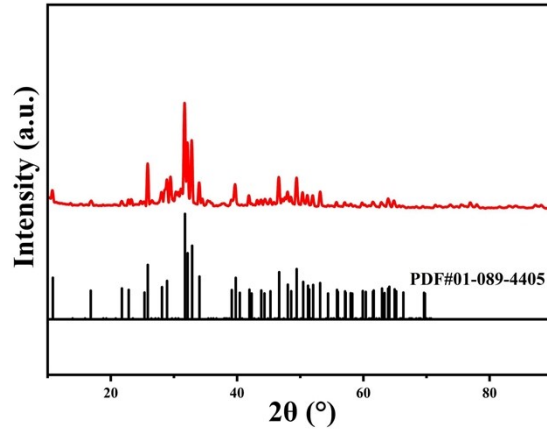


Figure S2. XRD image of calcium phosphate crystals

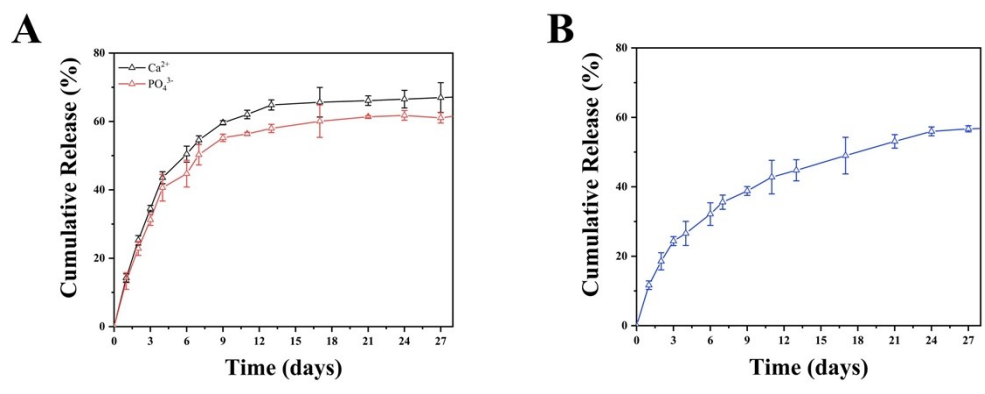


Figure S3. Release of substance from microspheres. (A) Release curve of calcium ions and phosphate ions. **(B)** Release curve of melatonin.

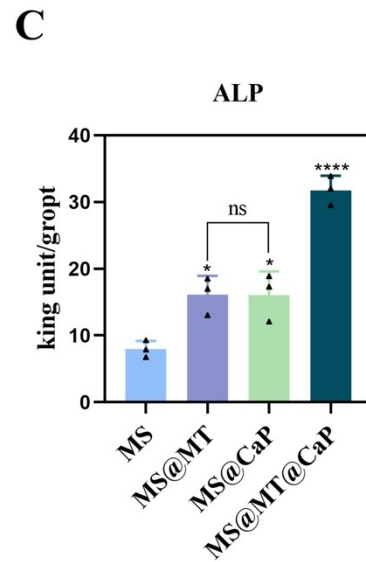
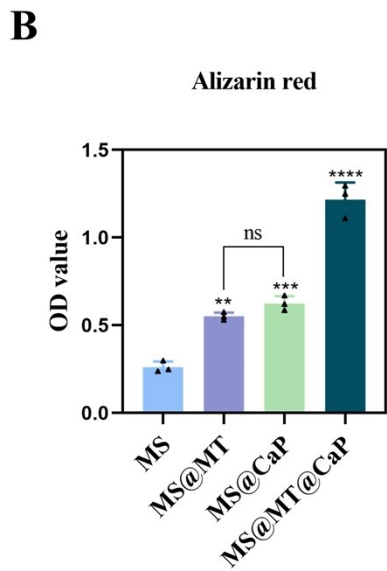
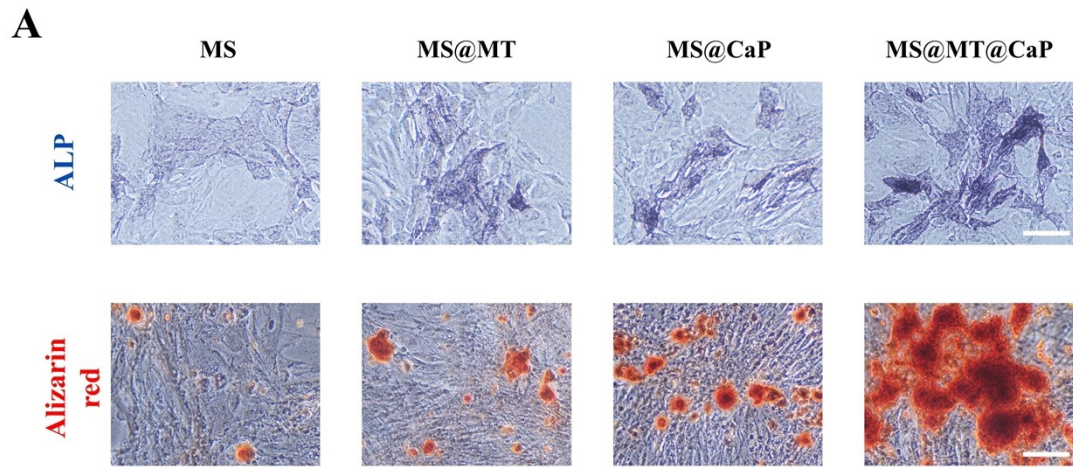
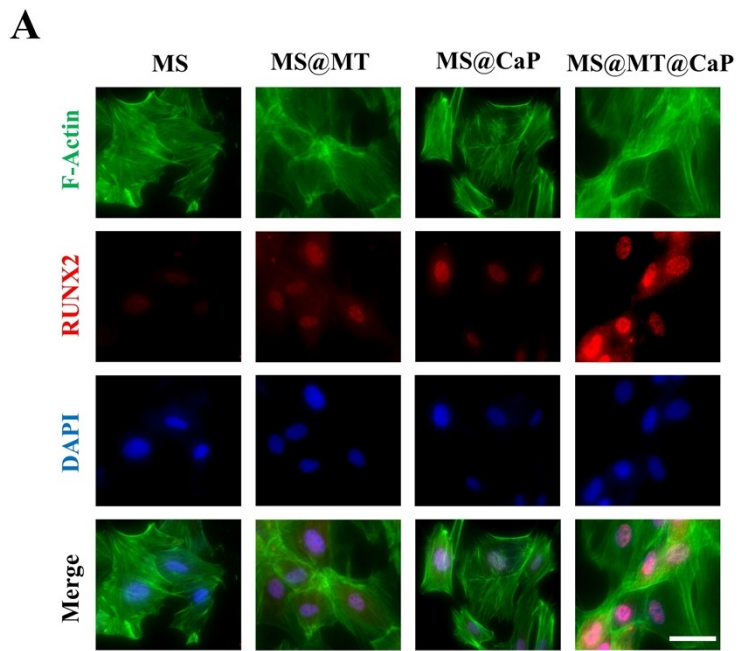


Figure S4. (A) Images of ALP and Alizarin red staining (scale bar = 100 μ m). (B) Quantitative analysis of ALP staining (n = 4). (C) Quantitative analysis of calcium nodule content.



B

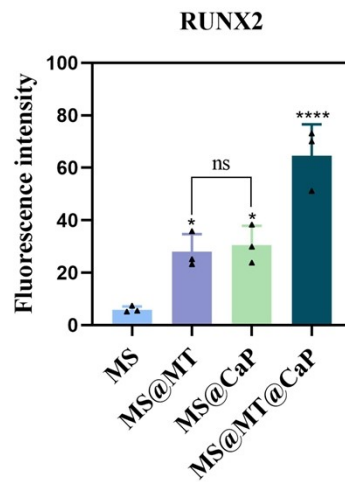


Figure S5. (A) RUNX2 immunofluorescence staining (scale bar = 50 μ m). **(B)** Semi-quantitative analysis of the intensity of RUNX2 immunofluorescence staining (n = 4).

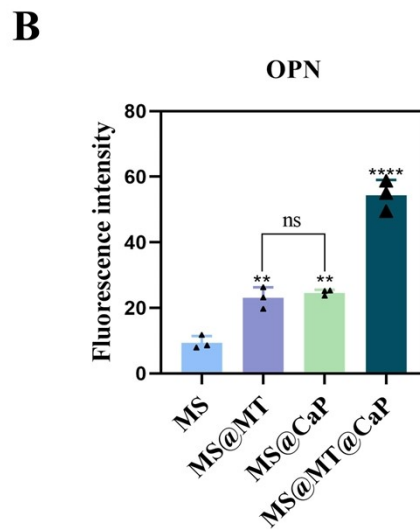
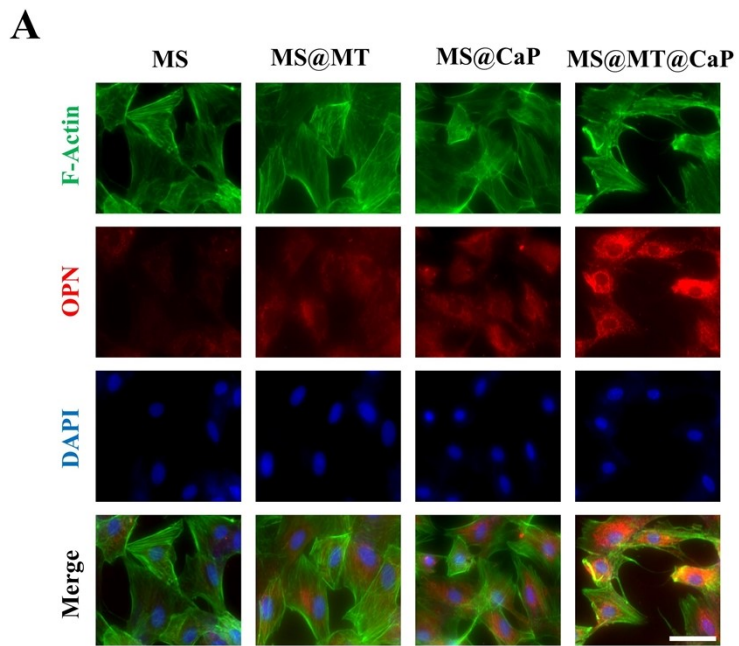


Figure S6. (A) OPN immunofluorescence staining (scale bar = 50 μ m). (B) Semi-quantitative analysis of the intensity of OPN immunofluorescence staining.