

# Supplementary Information

## Qualifying P-glycoprotein in drug-resistant ovarian cancer cells: a dual-mode aptamer probe approach

Chaobin Pang,<sup>a,#</sup> Heng Xu,<sup>b,c,#</sup> Jichao Xu,<sup>a</sup> Lei Zhang,<sup>a</sup> Jinhua Wang,<sup>d,e\*</sup> Su Jing<sup>a\*</sup>

<sup>a</sup>*School of Chemistry and Molecular Engineering, Nanjing Tech University, Nanjing 211816, China.*

<sup>b</sup>*Jiangsu Provincial Institute of Materia Medica, Nanjing Tech University, Nanjing, 211816, China.*

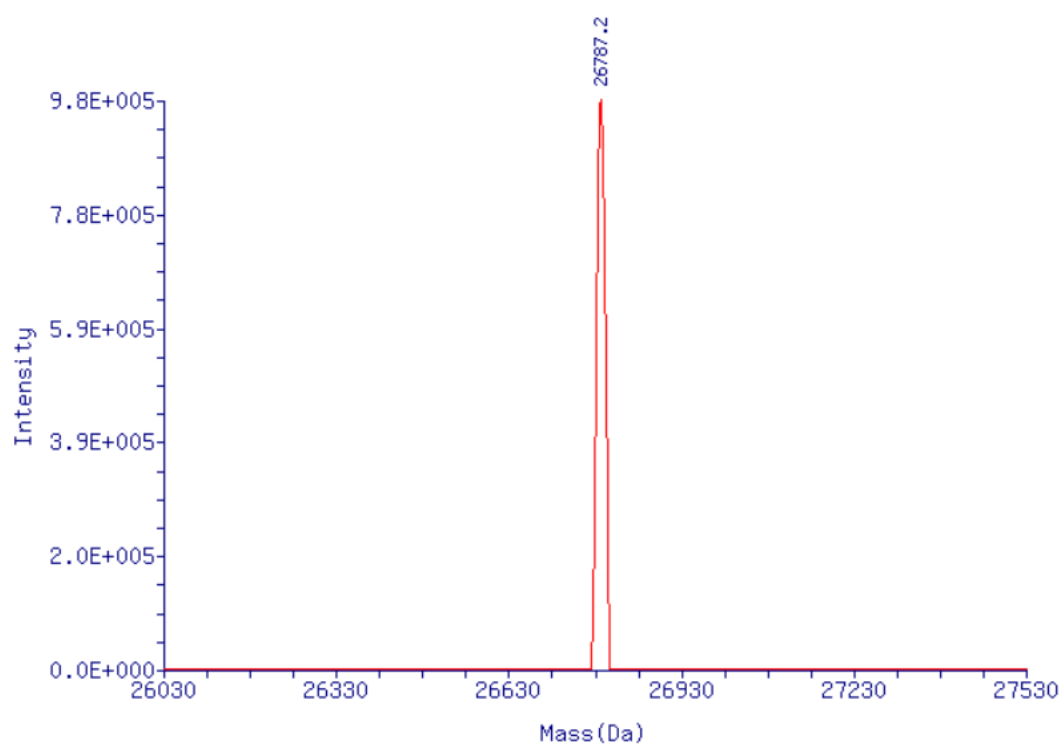
<sup>c</sup>*Nanjing Health Run Biotechnology Co., Ltd, Nanjing, 211316, China.*

<sup>d</sup>*Department of Gynecological Oncology Surgery, Jiangsu Cancer Hospital (Jiangsu Institute of Cancer Research, Nanjing Medical University Affiliated Cancer Hospital), 42 Baiziting Road, Nanjing 210009, Jiangsu Province, China.*

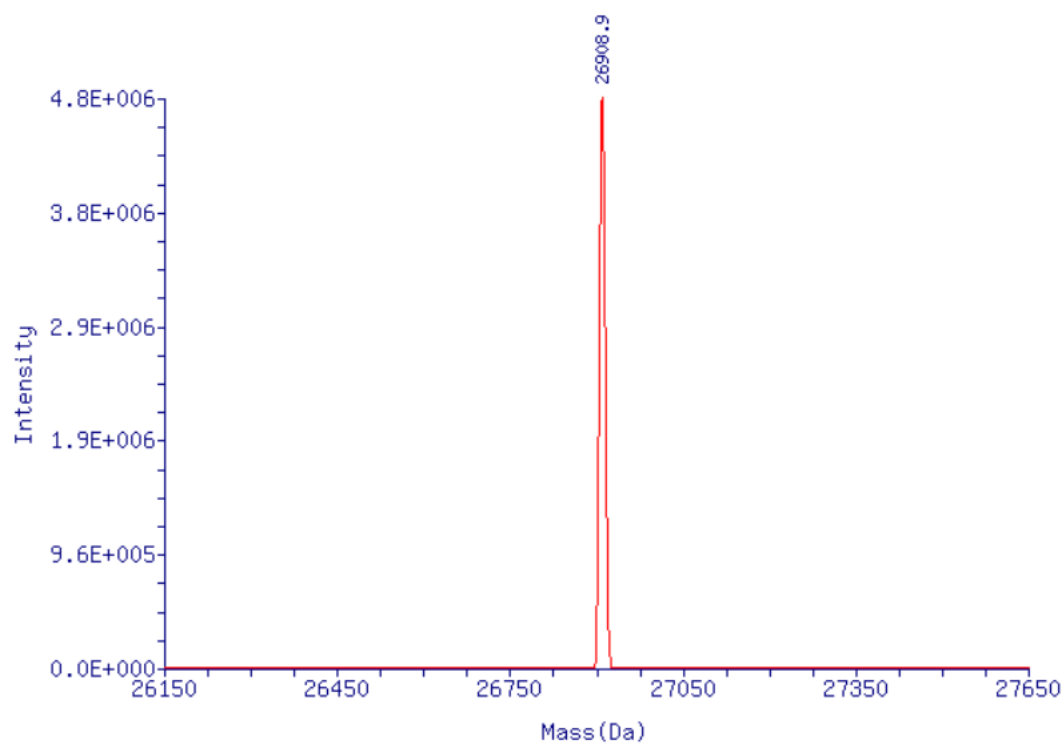
<sup>e</sup>*Department of Gynaecology, NO.1 Hospital of Xining, 10 Huzhuxiang Road, Xining 810099, Qinghai Province, China.*

# *These authors contributed equally to this work.*

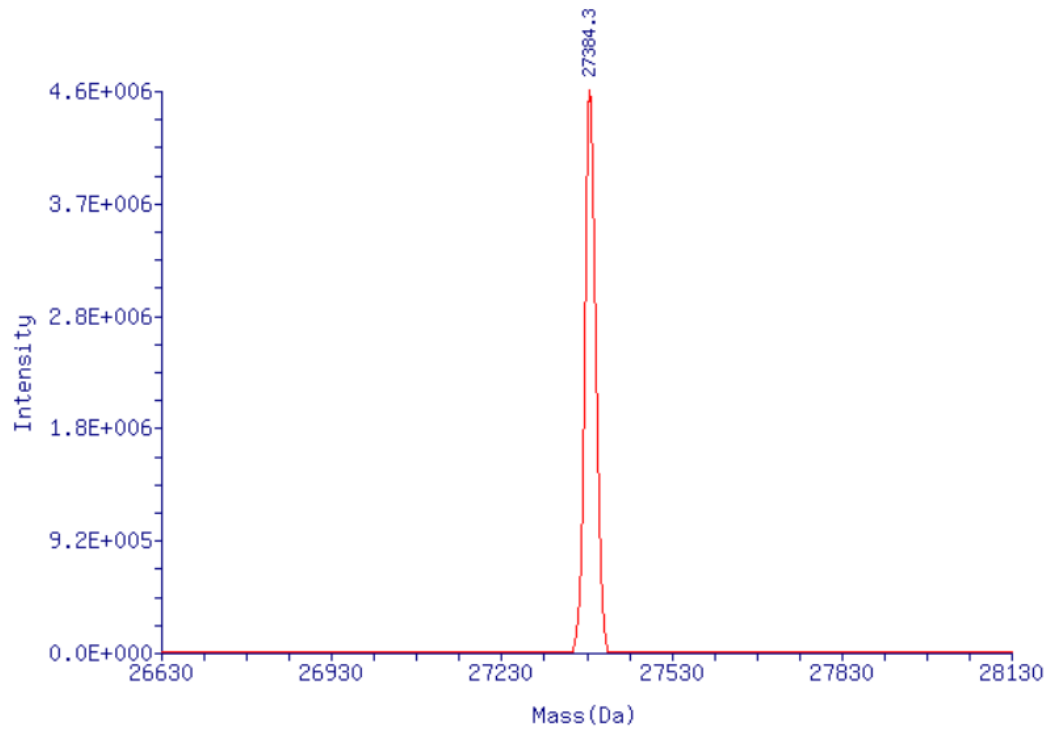
\**Correspondence address: wangjinhua@jszlyy.com.cn, sjing@njtech.edu.cn*



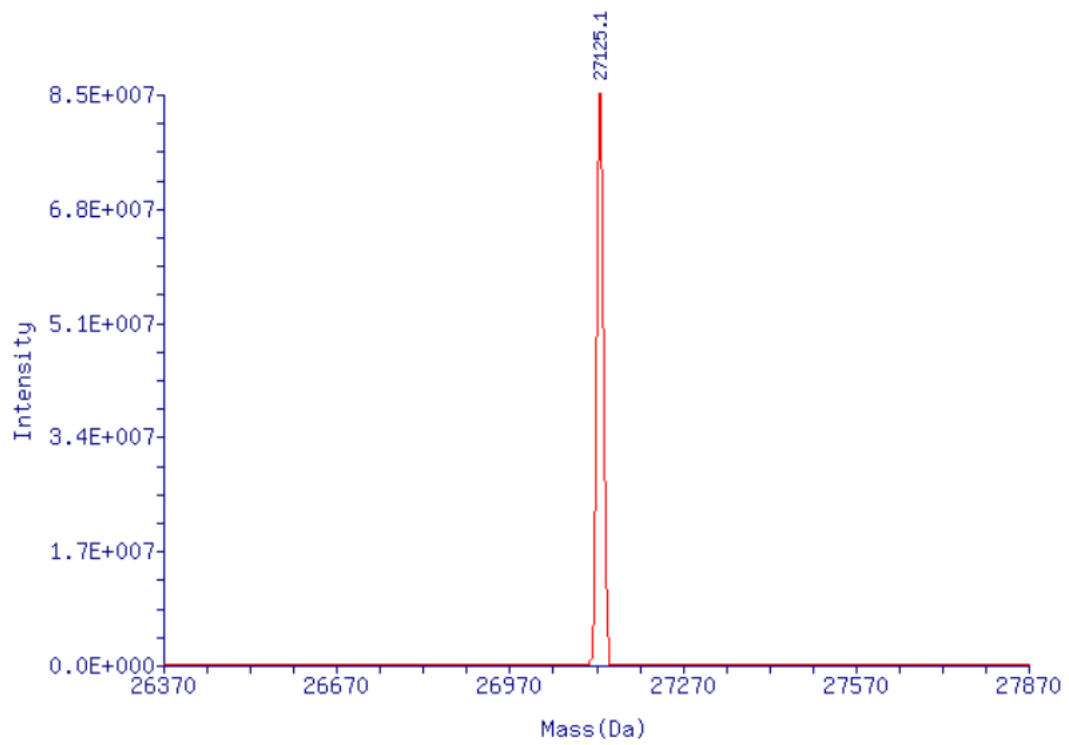
**Fig. S1.** HPLC-MS of Apt-probe-1.



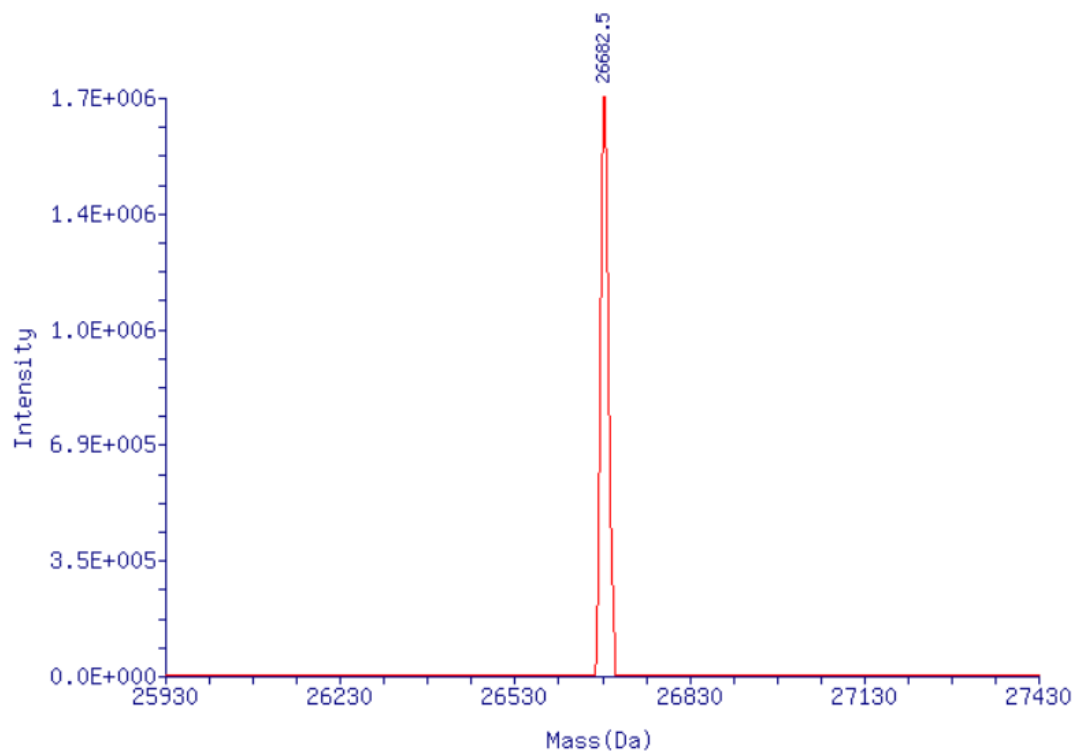
**Fig. S2.** HPLC-MS of Apt-probe-2.



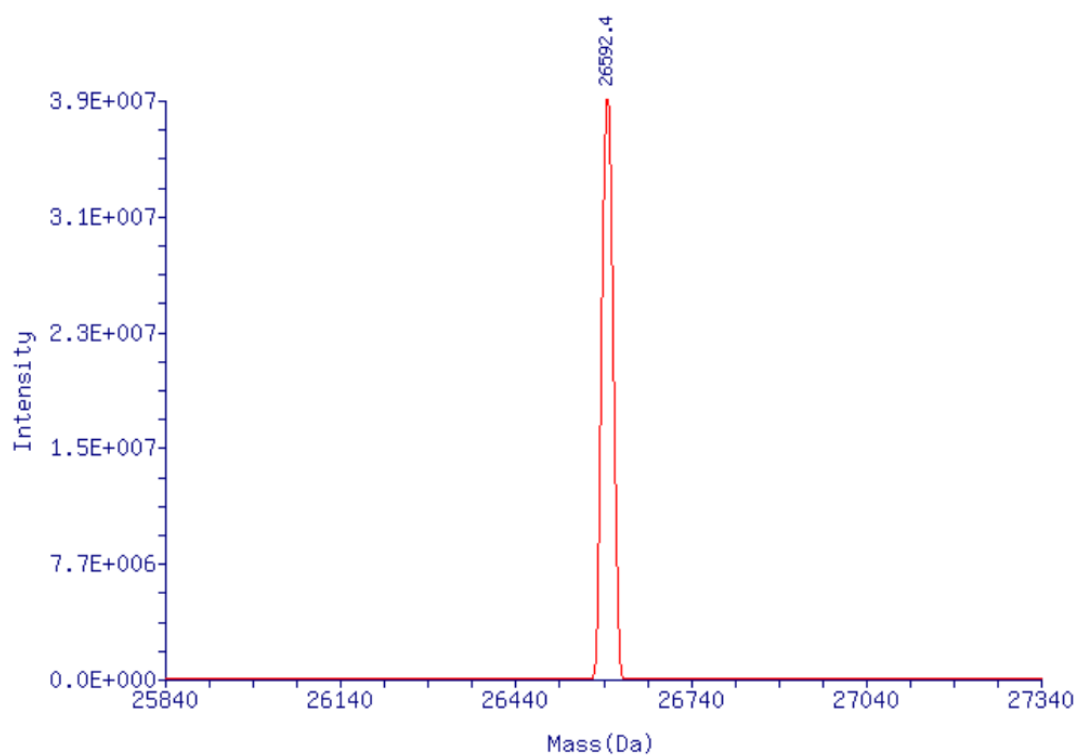
**Fig. S3.** HPLC-MS of **Apt-probe-3**.



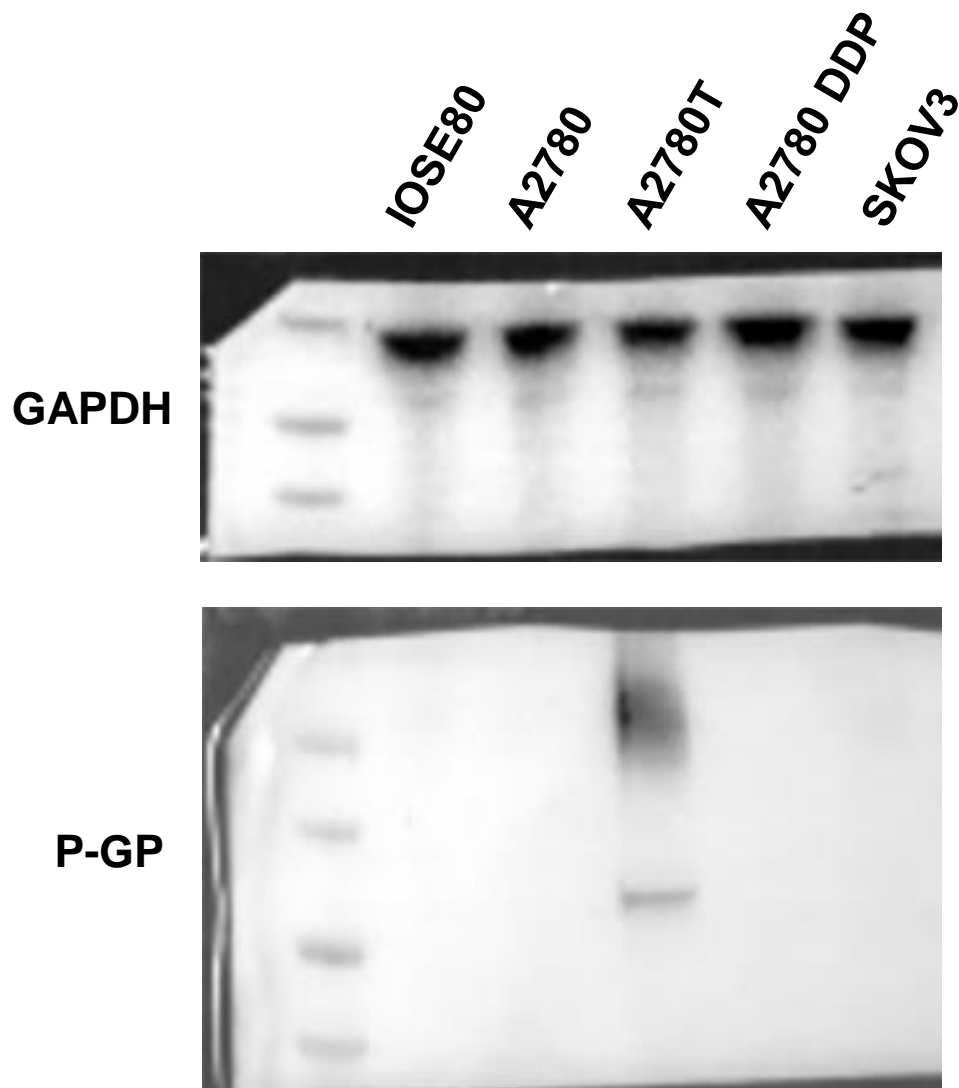
**Fig. S4.** HPLC-MS of **Apt-probe-4**.



**Fig. S5.** HPLC-MS of **Apt-probe-5**.



**Fig. S6.** HPLC-MS of **Apt-probe-6**.



**Fig. S7.** The uncropped image of the original Western blot (WB) analyses related to the representative WB blots shown in **Fig. 7B**.