

Fig. S1 Size distribution curve of pGMA beads

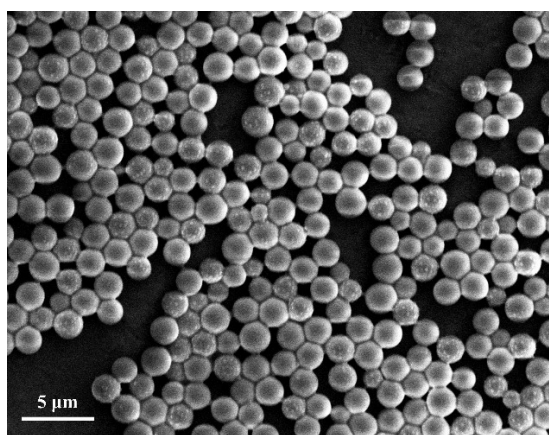


Fig. S2 SEM image of pGMA beads

Table S2 Dilution integrity results of the analytes in mouse serum

Dilution Ratio	Daratumumab		Pembrolizumab	
	Spiked	Measured	Spiked	Measured
	Conc.($\mu\text{g/mL}$)	Conc.($\mu\text{g/mL}$)	Conc.($\mu\text{g/mL}$)	Conc.($\mu\text{g/mL}$)
10	100	106	100	107
		104		109
		104		108
		101		106
		107		109
		104		106
Mean		104		108
SD		1.94		1.35
%CV	-	1.9	-	1.3
%RE		4.4		7.5

Table S3 Carry-over results of analytes in mouse serum

	Residual peak area	LLOQ peak area	Carry over (%)
Daratumumab	1.22E+03		3.0
	2.17E+03		5.3
	1.85E+03	4.08E+04	4.5
	1.25E+03		3.1
	1.85E+03		4.5
	2.29E+03		5.6
2.98E+03	3.7		
3.69E+03	4.5		
Pembrolizumab	3.52E+03	8.15E+04	4.3
	2.10E+03		2.6
	4.56E+03		5.6
	2.83E+03		3.5
	4.09E+02		0.6
	5.68E+02		0.8
Rituximab	4.28E+02	7.37E+04	0.6
	4.83E+02		0.7
	4.80E+02		0.7
	4.43E+02		0.6