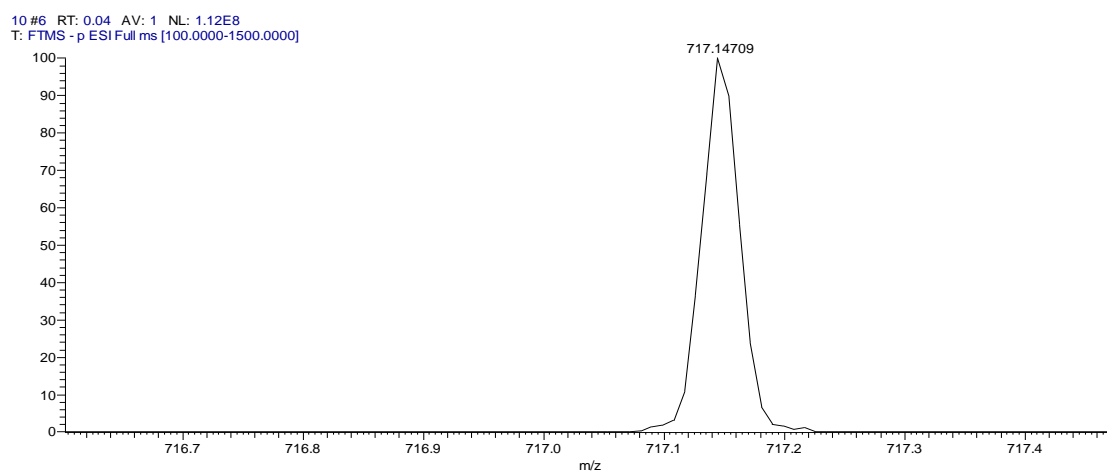
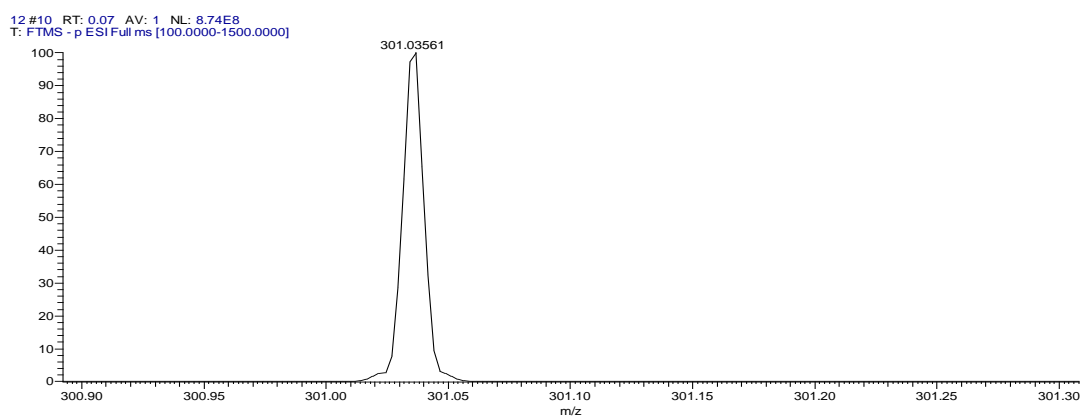


**Fig. S1** Mass spectrum of 1, 2, 3, 4, 6-Pentagalloylglucose (Fraction 9).

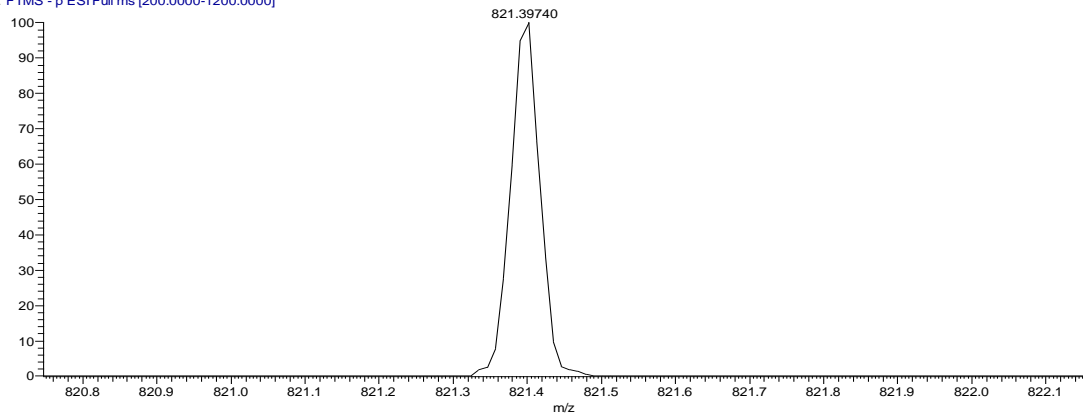


**Fig. S2** Mass spectrum of Salvianolic acid B (Fraction 10).



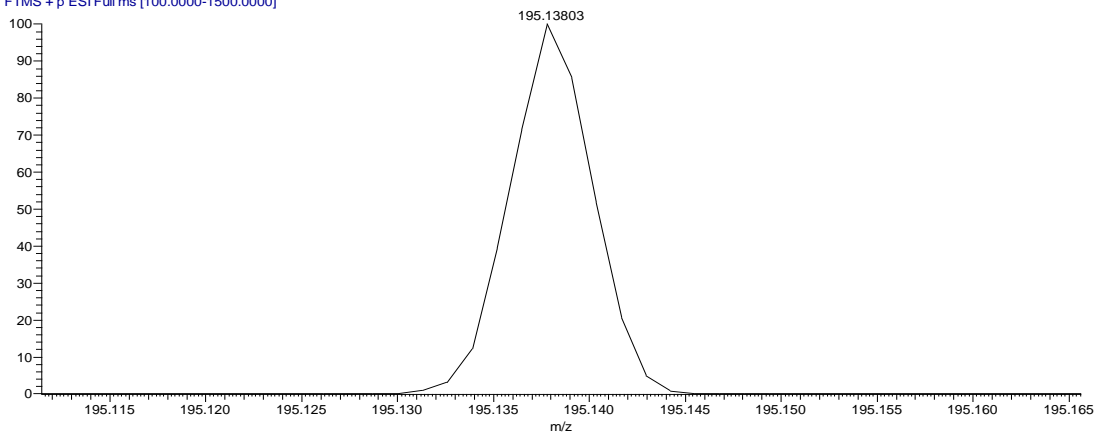
**Fig. S3** Mass spectrum of Quercetin (Fraction 12).

14 #18 RT: 0.13 AV: 1 NL: 1.04E8  
T: FTMS - p ESI Full ms [200.0000-1200.0000]



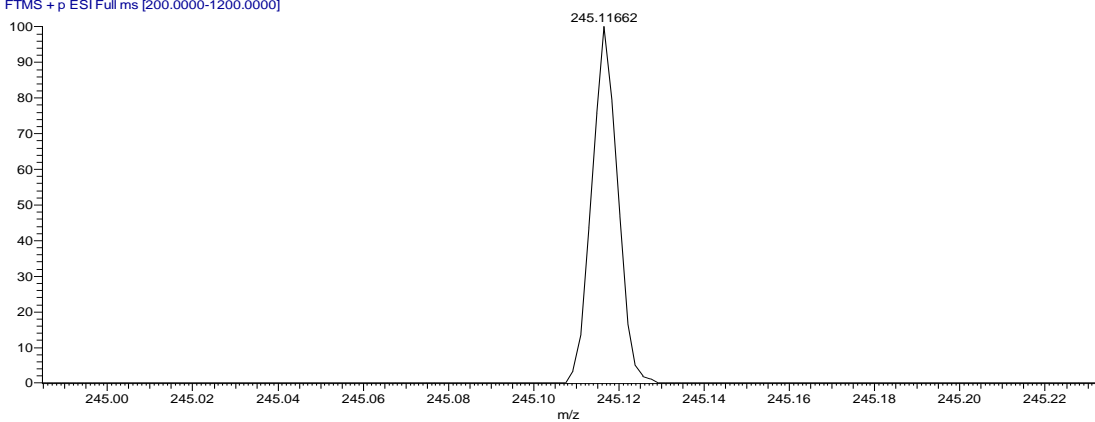
**Fig. S4** Mass spectrum of Glycyrrhizic acid (Fraction 14).

22 #15 RT: 0.11 AV: 1 NL: 7.12E7  
T: FTMS + p ESI Full ms [100.0000-1500.0000]



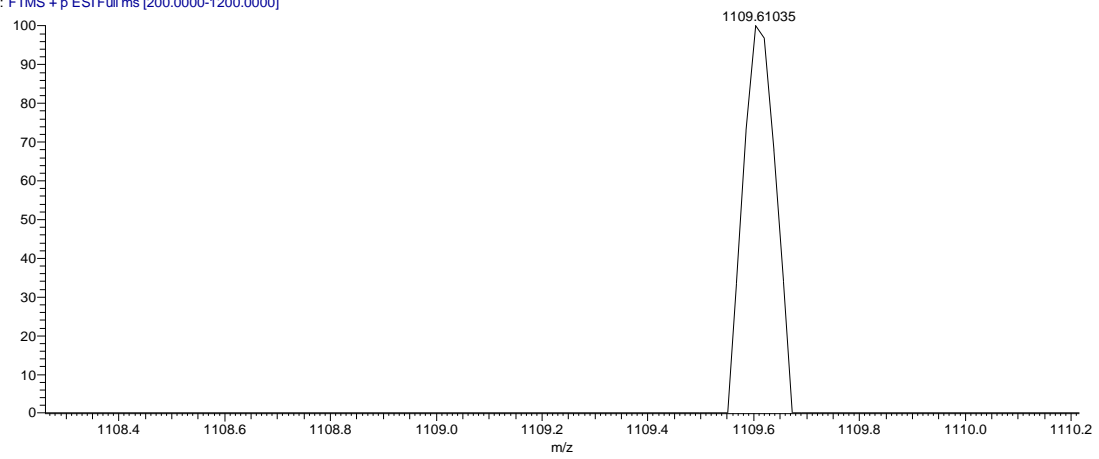
**Fig. S5** Mass spectrum of Neocnidilide (Fraction 22).

26 #9 RT: 0.06 AV: 1 NL: 5.18E9  
T: FTMS + p ESI Full ms [200.0000-1200.0000]



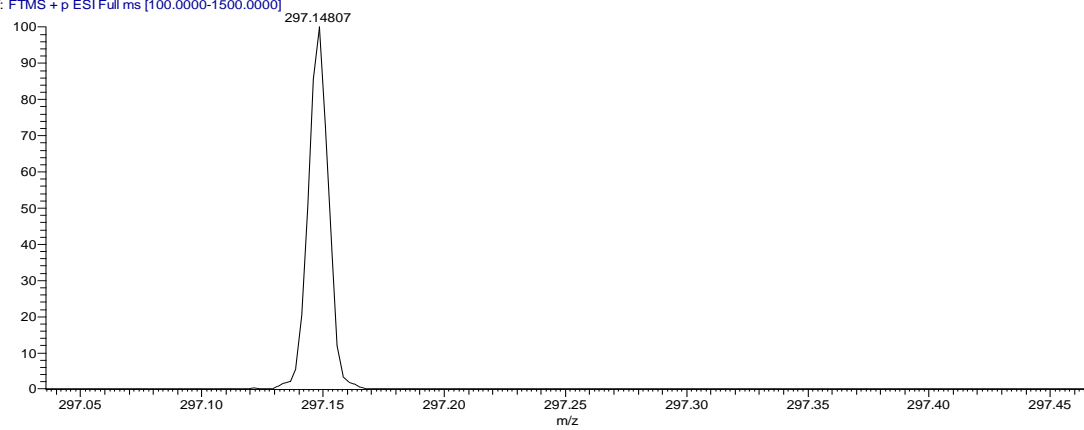
**Fig. S6** Mass spectrum of Osthol (Fraction 26).

41 #15 RT: 0.11 AV: 1 NL: 3.09E6  
T: FTMS + p ESI Full ms [200.0000-1200.0000]

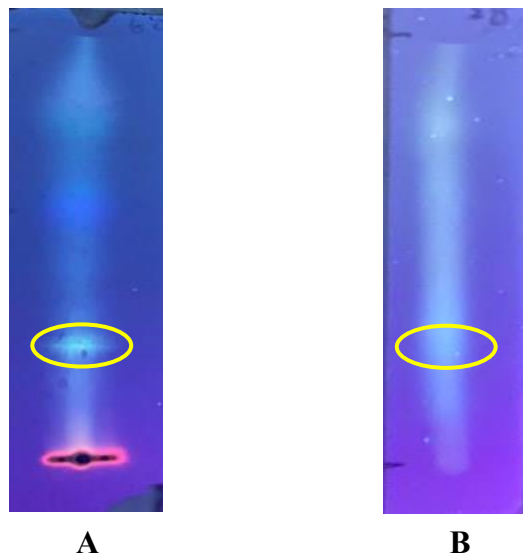


**Fig. S7** Mass spectrum of Rb1 (Fraction 41).

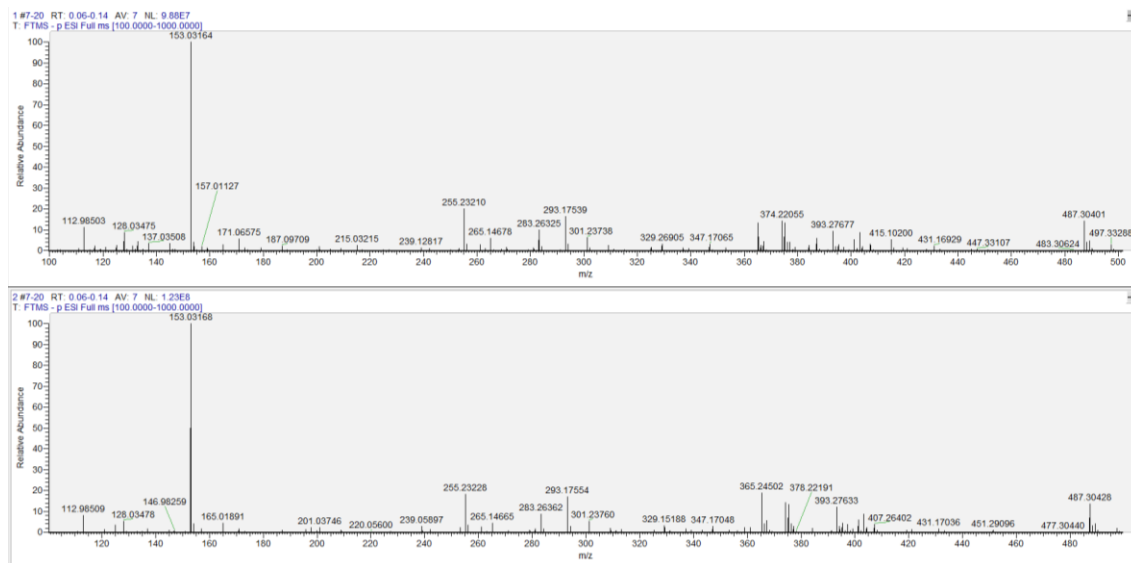
41 #9 RT: 0.06 AV: 1 NL: 1.79E9  
T: FTMS + p ESI Full ms [100.0000-1500.0000]



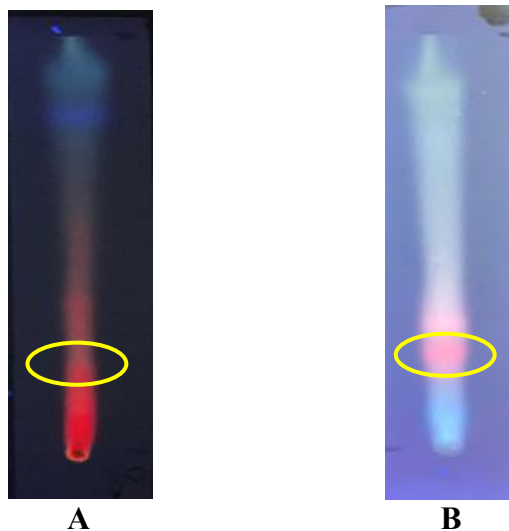
**Fig. S8** Mass spectrum of Cryptotanshinone (Fraction 41).



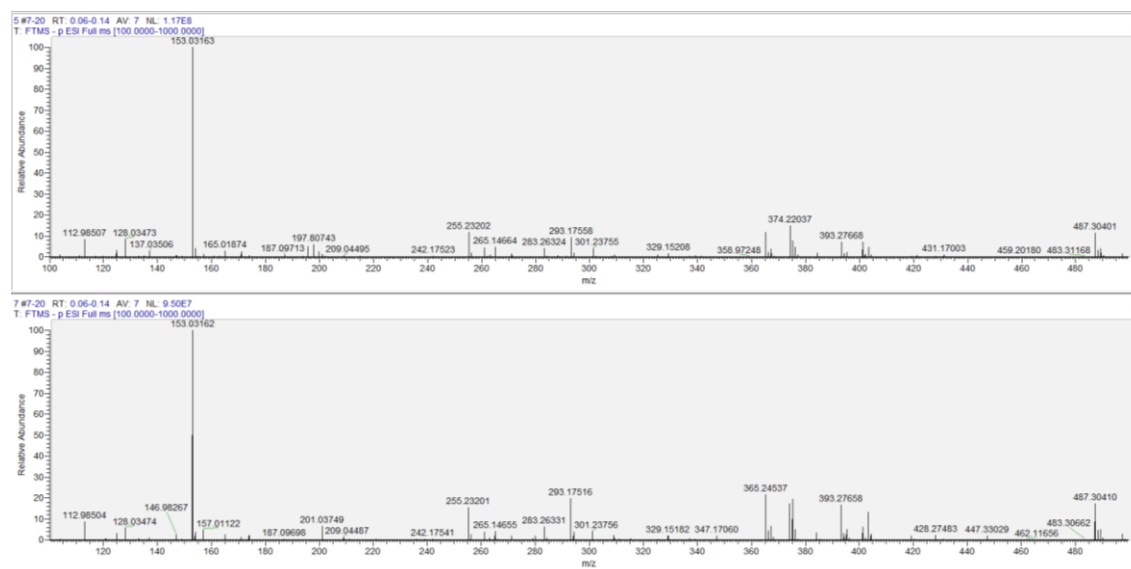
**Fig. S9** The *C. manghas* leaf extract and Fractions 28 were analyzed by TLC, and the band at the yellow circle was extracted for LC-MS/MS analysis. A: *C. manghas* leaf extract, B: Fractions 28.



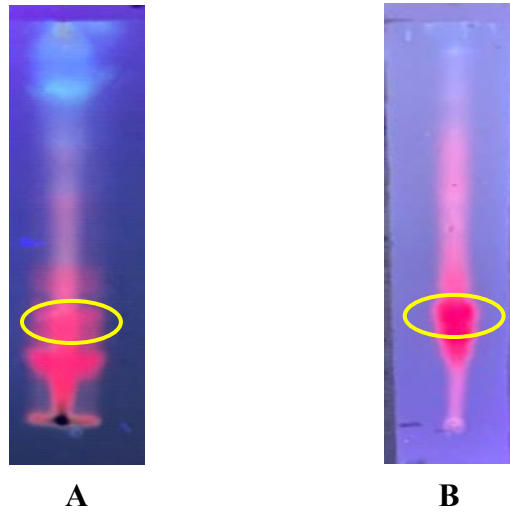
**Fig. S10** Mass spectra of the extracted bands from the *C. manghas* leaf extract and Fractions 28 at the yellow circle on TLC. Top: *C. manghas* leaf extract. Bottom: Fractions 28.



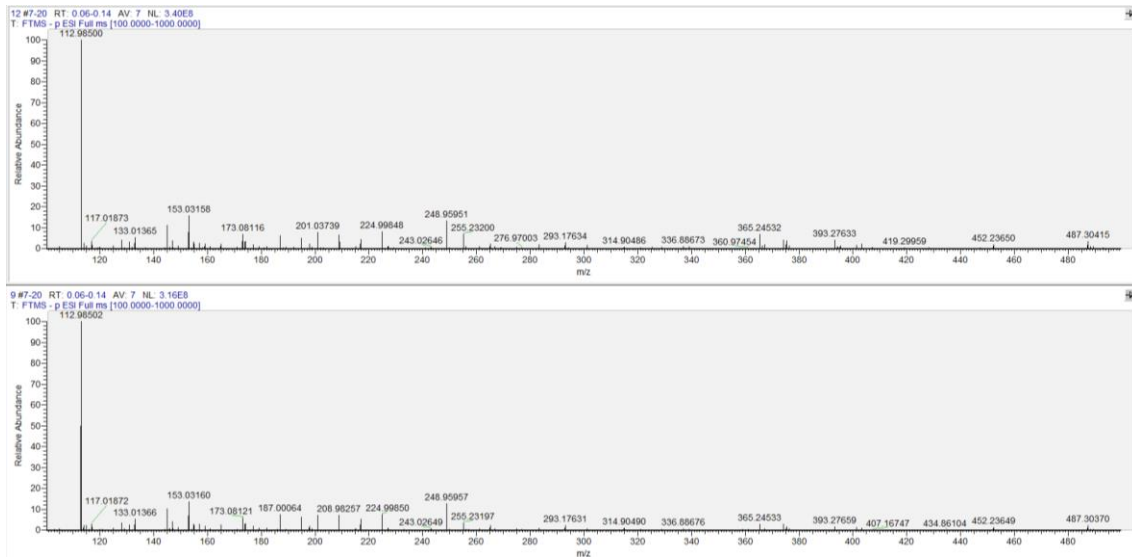
**Fig. S11** The *C. manghas* leaf extract and Fractions 40 were analyzed by TLC, and the band at the yellow circle was extracted for LC-MS/MS analysis. A: *C. manghas* leaf extract, B: Fractions 40.



**Fig. S12** Mass spectra of the extracted bands from the *C. manghas* leaf extract and Fractions 40 at the yellow circle on TLC. Top: *C. manghas* leaf extract. Bottom: Fractions 40.



**Fig. S13** The *C. manghas* leaf extract and Fractions 47 were analyzed by TLC, and the band at the yellow circle was extracted for LC-MS/MS analysis. A: *C. manghas* leaf extract, B: Fractions 47.



**Fig. S14** Mass spectra of the extracted bands from the *C. manghas* leaf extract and Fractions 47 at the yellow circle on TLC. Top: *C. manghas* leaf extract. Bottom: Fractions 47.

195/1D-H/MeOD/500 MHz

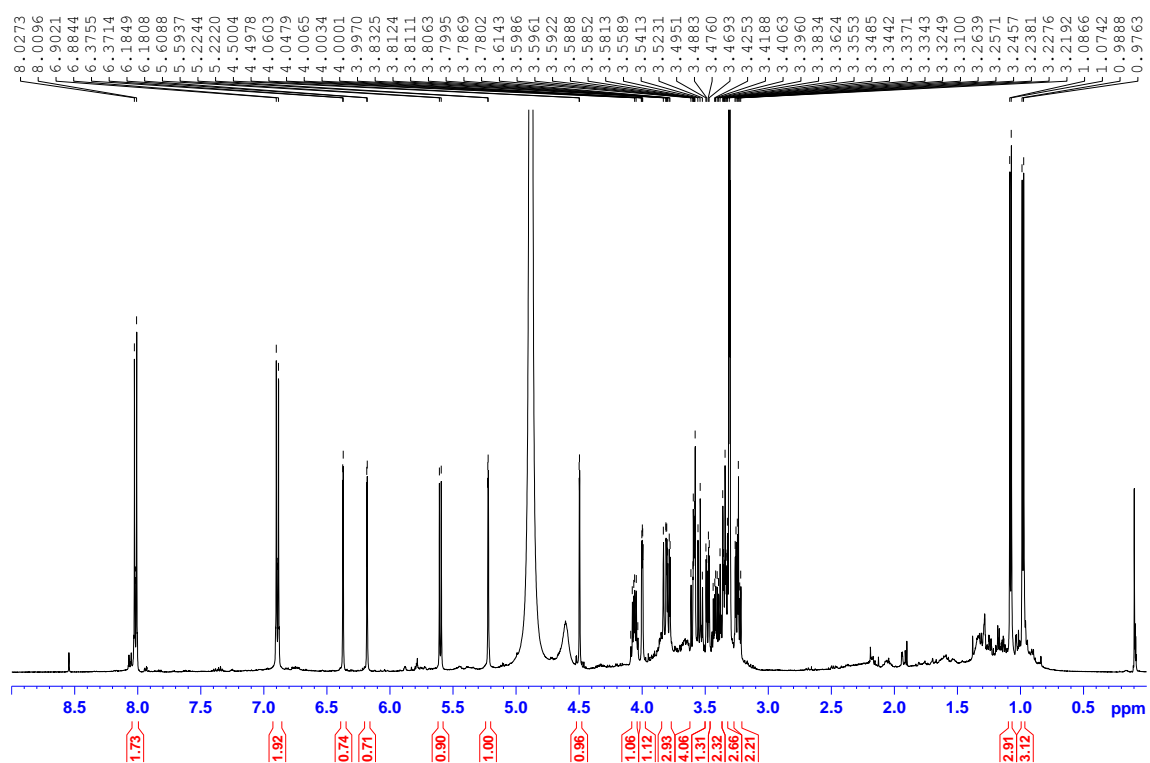


Fig. S15 <sup>1</sup>H-NMR spectrum of Clitorin.