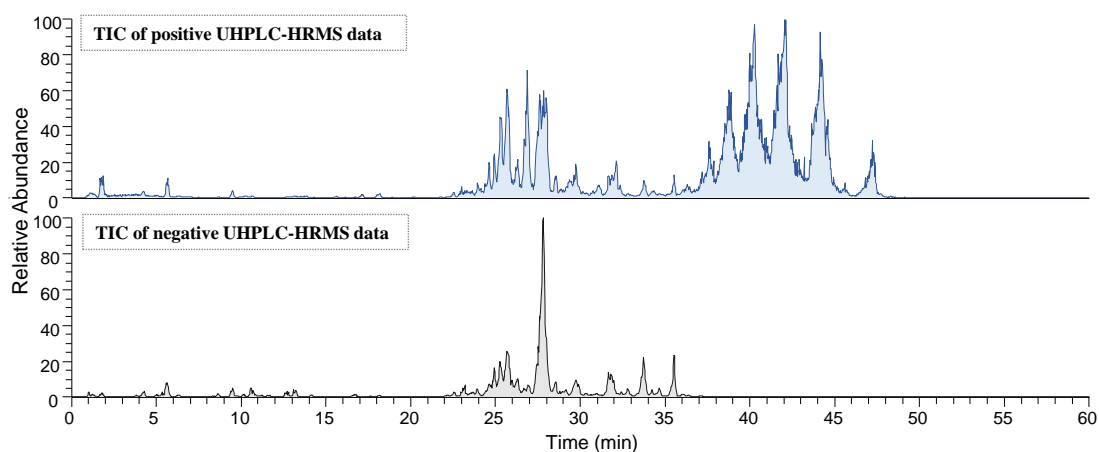
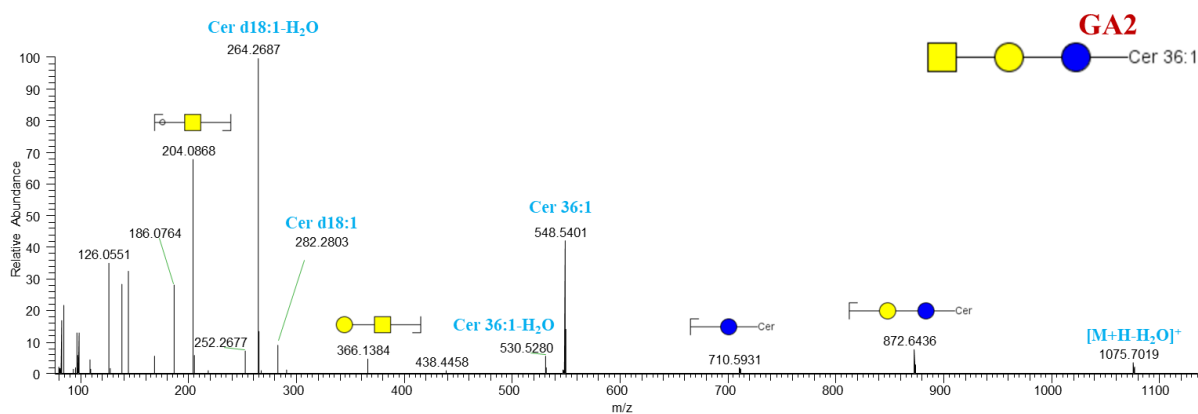


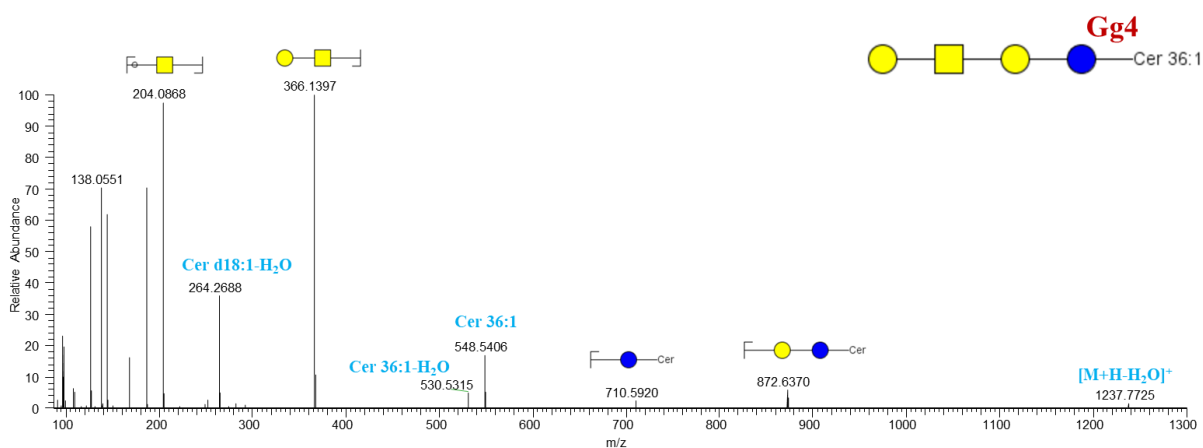
➤ **Representative total ion chromatogram (TIC) of serum sample**



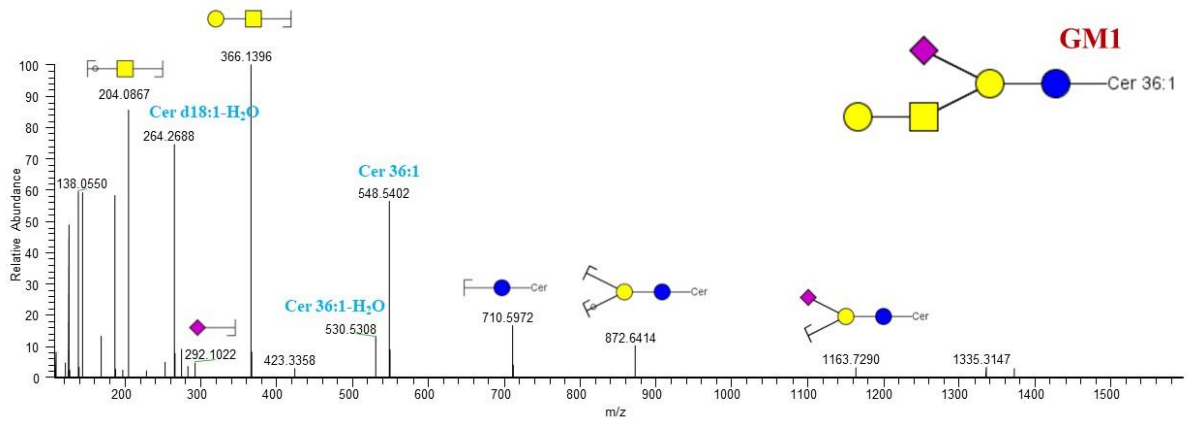
➤ **Typical MS/MS and fragmentation pattern of GA2**



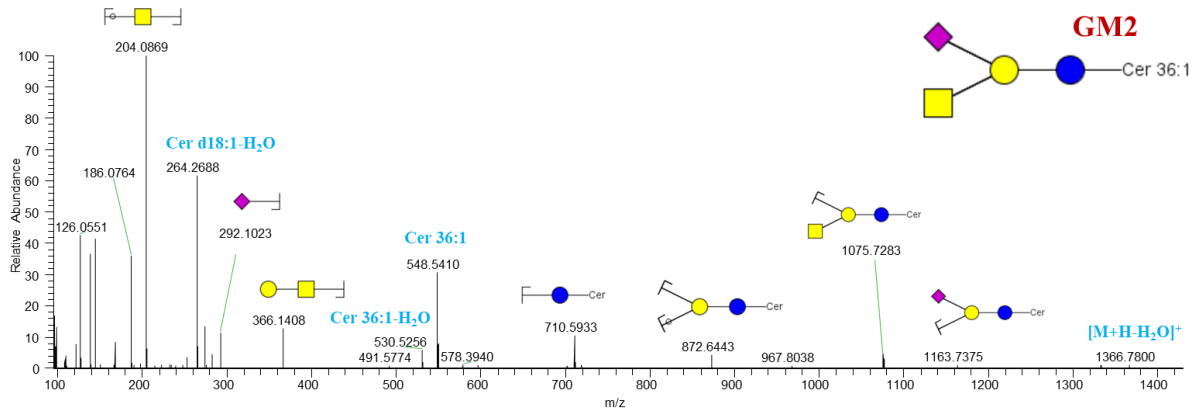
➤ **Typical MS/MS and fragmentation pattern of Gg4**



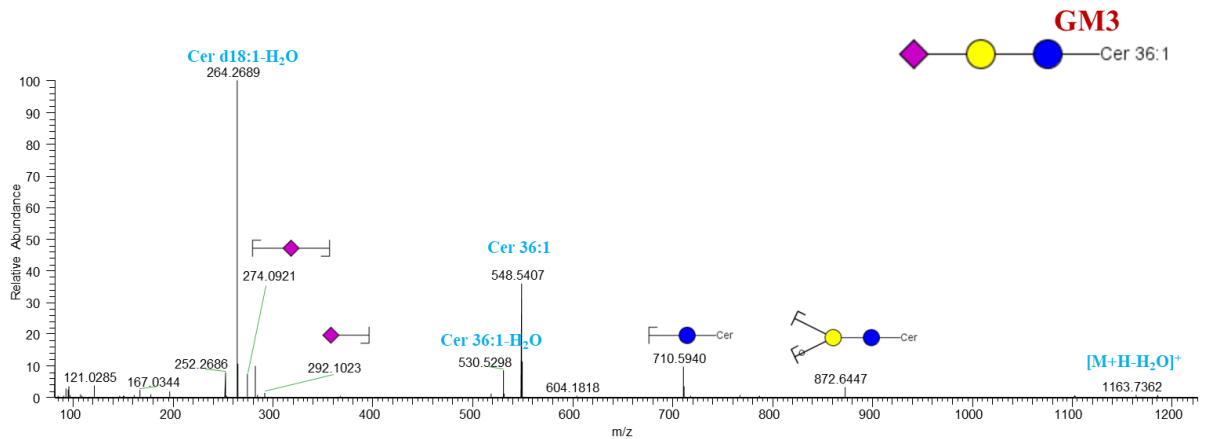
➤ **Typical MS/MS and fragmentation pattern of GM1**



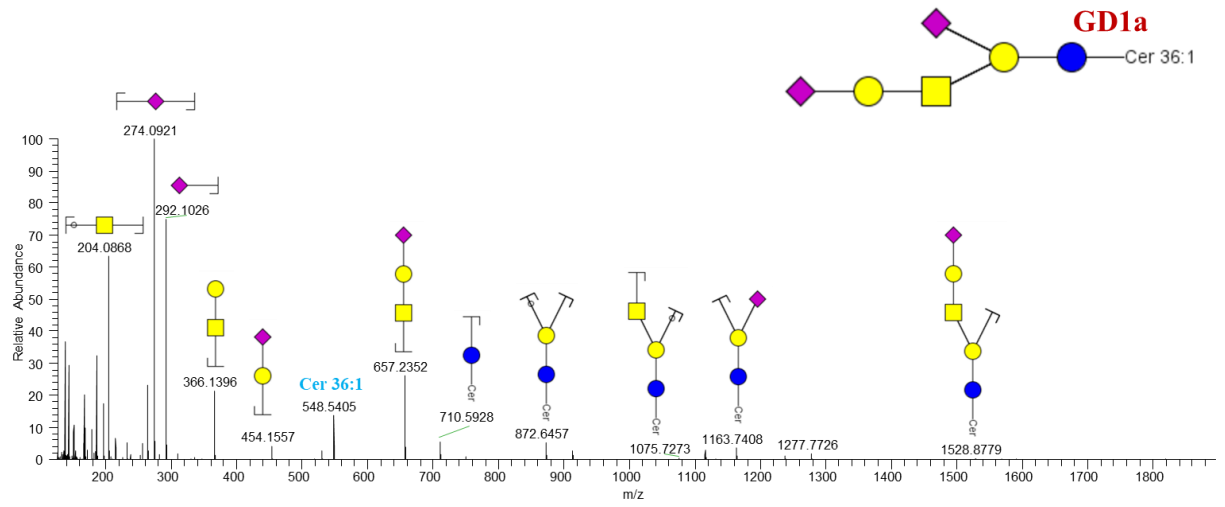
➤ **Typical MS/MS and fragmentation pattern of GM2**



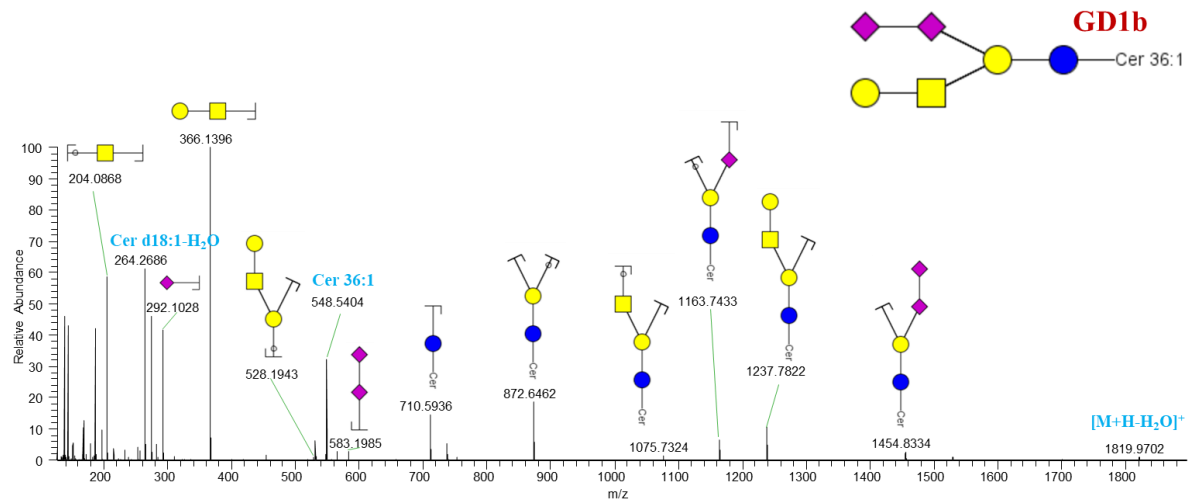
➤ **Typical MS/MS and fragmentation pattern of GM3**



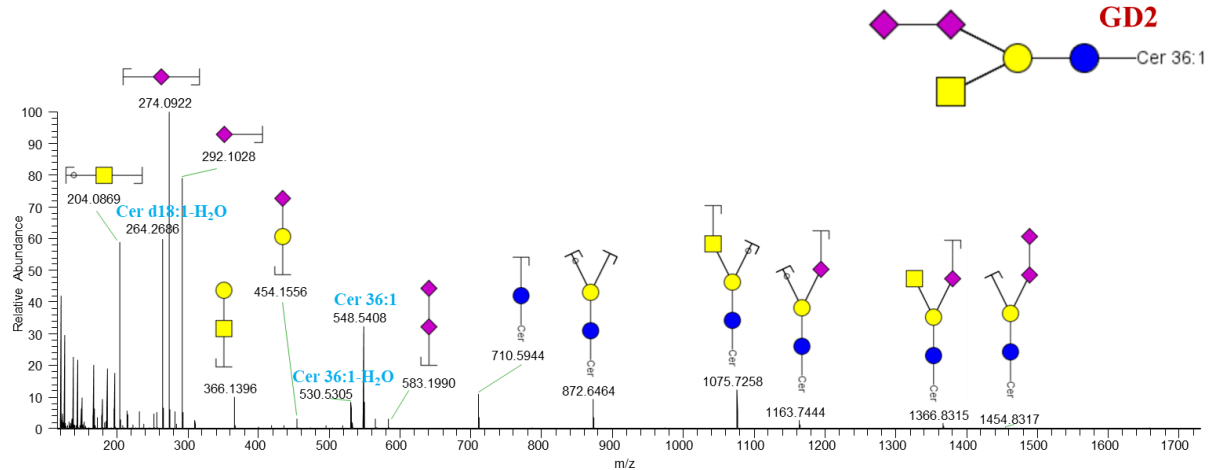
➤ **Typical MS/MS and fragmentation pattern of GD1a**



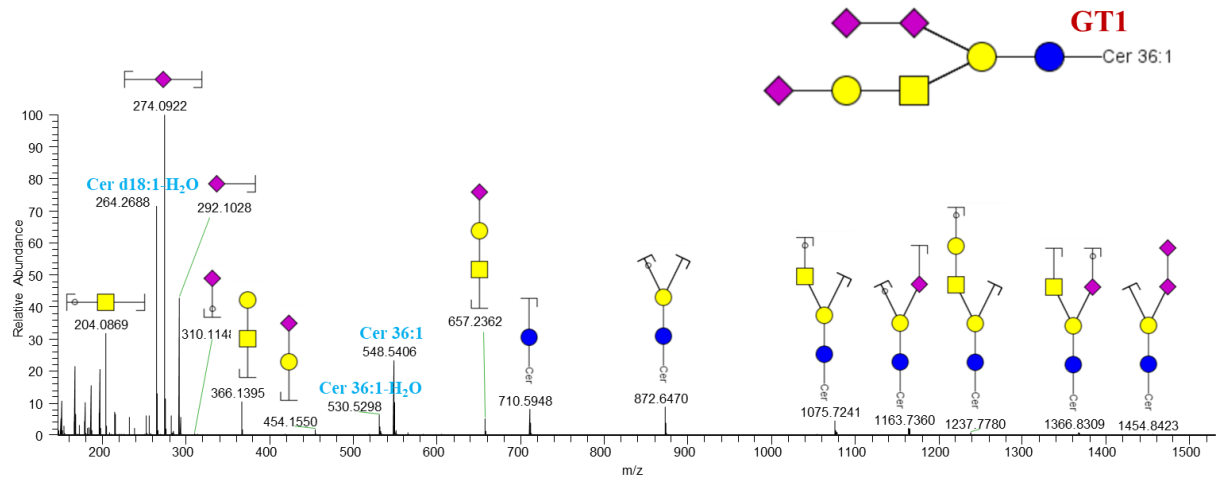
➤ **Typical MS/MS and fragmentation pattern of GD1b**



➤ **Typical MS/MS and fragmentation pattern of GD2**



➤ **Typical MS/MS and fragmentation pattern of GT1**



➤ **Typical MS/MS and fragmentation pattern of Fucosylated GM1**

