

Chitosan-based hydrogel loaded with fenofibrate for diabetic wound

healing

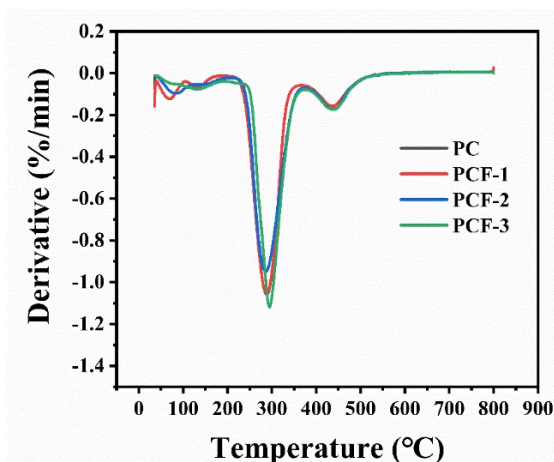


Fig. S1. DTG of PC, PCF-1, PCF-2, and PCF-3 hydrogel.

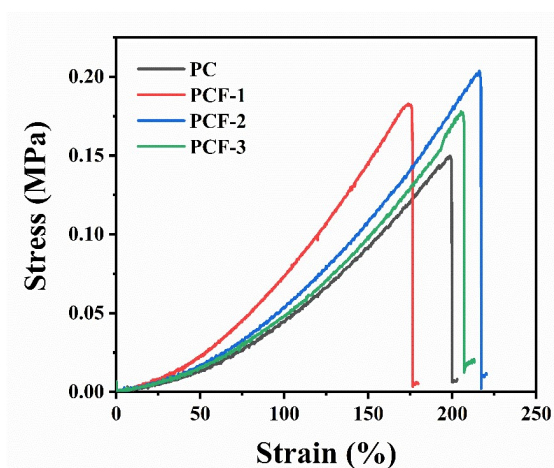


Fig. S2. Tensile stress-strain curves of PC, PCF-1, PCF-2, PCF-3 hydrogel.

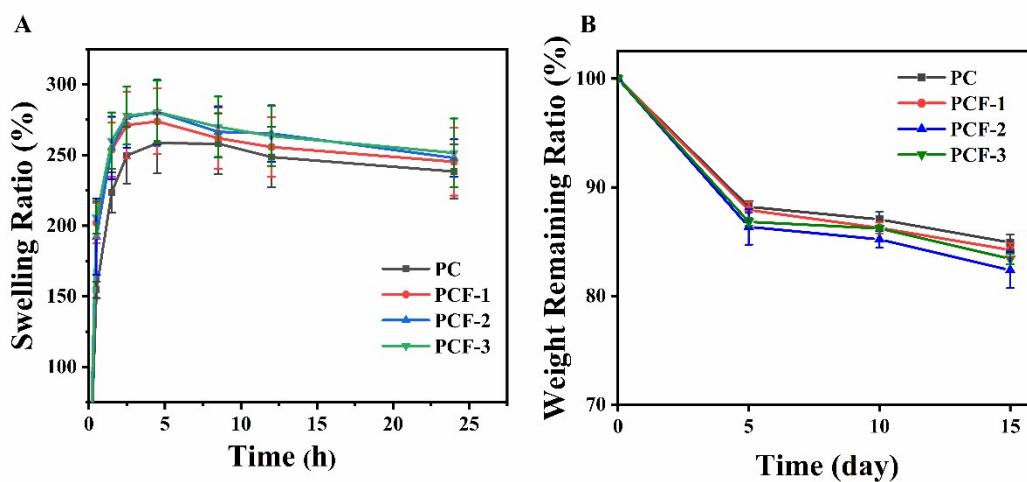


Fig. S3. Swelling ratio (A) and weight remaining ratio (B) of hydrogels.

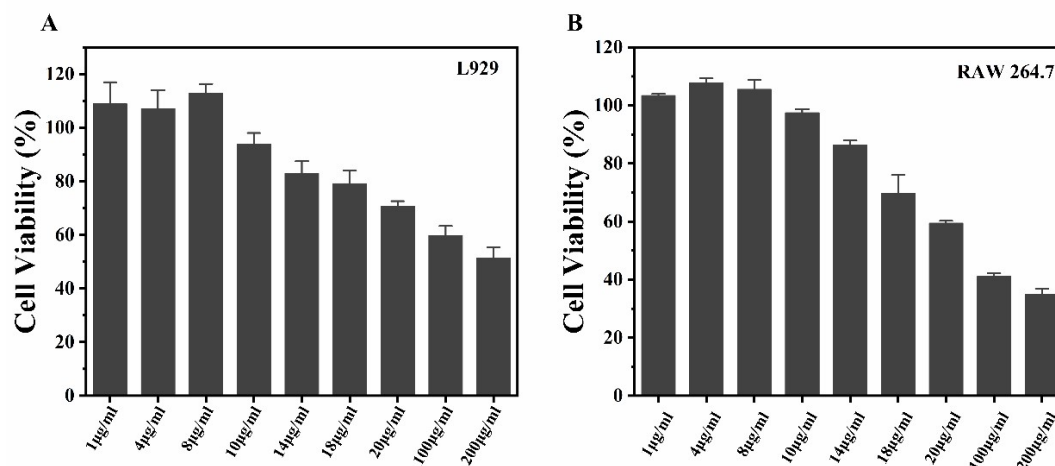


Fig. S4. The 24-hour cytotoxicity of FEN on L929 cells (A) and RAW 264.7 cells (B).

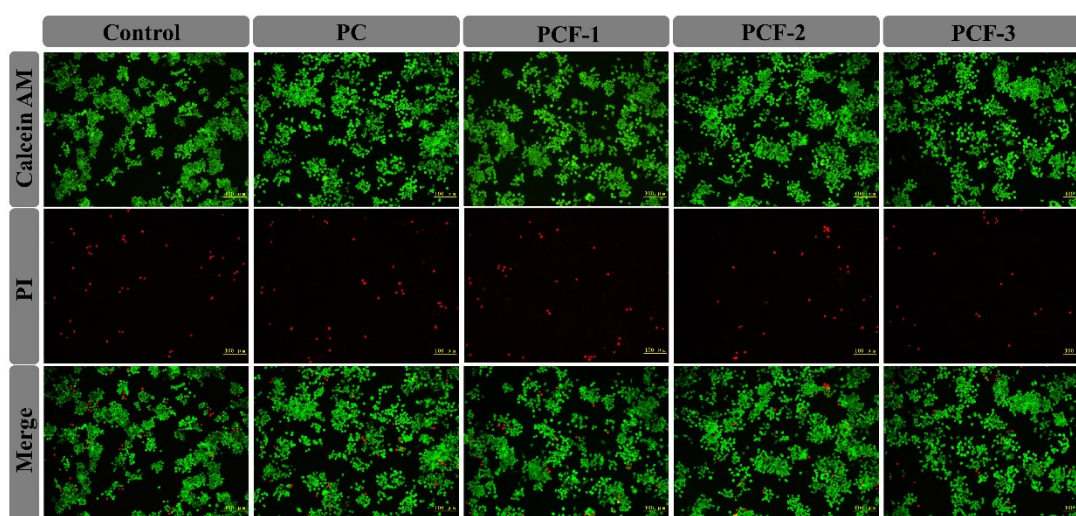


Fig. S5. Representative images of live/dead staining of RAW 264.7 cells in the presence of hydrogels extracts (scale bar: 100 µm).