

# Amplified Response of Drug-Induced Liver Fibrosis via Immune Cell Co-Culture in a 3D *In Vitro* Hepatic Fibrosis Model

Hyewon Jung<sup>1,3†</sup>, Mi-lang Kyun<sup>1†</sup>, Ji-In Kwon<sup>1,4</sup>, Jeongha Kim<sup>1,4</sup>, Ju-Kang Kim<sup>1</sup>, Yu Bin Lee<sup>1\*</sup>, Daeui Park<sup>2\*</sup>, Kyoung-Sik Moon<sup>1\*</sup>

<sup>1</sup>Department of Advanced Toxicology Research, Korea Institute of Toxicology, Daejeon 34114, Republic of Korea

<sup>2</sup>Department of Predictive Toxicology Research, Korea Institute of Toxicology, Daejeon 34114, Republic of Korea

<sup>3</sup>Human and Environmental Toxicology, University of Science and Technology, Daejeon, 34114, Republic of Korea

<sup>4</sup>Department of Food and Nutrition, University of Hannam, Daejeon, 34054, Republic of Korea

† These authors contributed equally to this study as first authors.

\* These authors contributed equally to this study as corresponding authors.

**Yu Bin Lee**

E-mail: yubin.lee@kitox.re.kr

**Daeui Park**

E-mail: daeui.park@kitox.re.kr

**Kyoung-Sik Moon**

E-mail: ksmoon@kitox.re.kr

## Keywords

*In vitro* liver model, liver fibrosis, inflammation, TGF- $\beta$ 1, Methotrexate

## Supplementray Information

Supplementary Table 1. Primers used for quantitative real-time PCR analysis.

Gene	Forward (5'→3')	Reverse (5'→3')
<i>TIMPI</i>	CGC TGA CAT CCG GTT CGT	TGT GGA AGT ATC CGC AGA CAC (T)
<i>MMP1</i>	CCT CGC TGG GAG CAA ACA	TTG GCA AAT CTG GCG TGT AA
<i>COL1A1</i>	TGT TCA GCT TTG TGG ACC TCC	CGC AGG TGA TTG GTG GGA TGT
<i>TGF-β1</i>	CAG AGT GGT TAT CTT TTG ATG	CTT GCA GTG TGT TAT CCC TGC (TG)
<i>FN1</i>	CAT CGA GCG GAT CTG GCC C	GCA GCT GAC TCC GTT GCC CA
<i>MyoG</i>	TCA GCT CCC TCA ACC AGG AGG (A)	TGT GAG AGC TGC ATT CGC TGG
<i>MyoD1</i>	TTT GCC AGA GCA GGA GCC CCT (G)	TTT GAT CAC CTG AGC GAG CGC
<i>CRP</i>	ACT TCC TAT GTA TCC CTC AAA (G)	CTC ATT GTC TTG TCT CTT GGT
<i>HAMP</i>	CAC AAC AGA CGG GAC AAC TT	CGC AGC AGA AAA TGC AGA TG
<i>C3</i>	GCC AAG ACG AAG AGA A	GGC ACC CAA AGA CAA C
<i>β-actin</i>	GGA CTT CGA GCA AGA GAT GG	AGC ACT GTG TTG GCG TAC AG

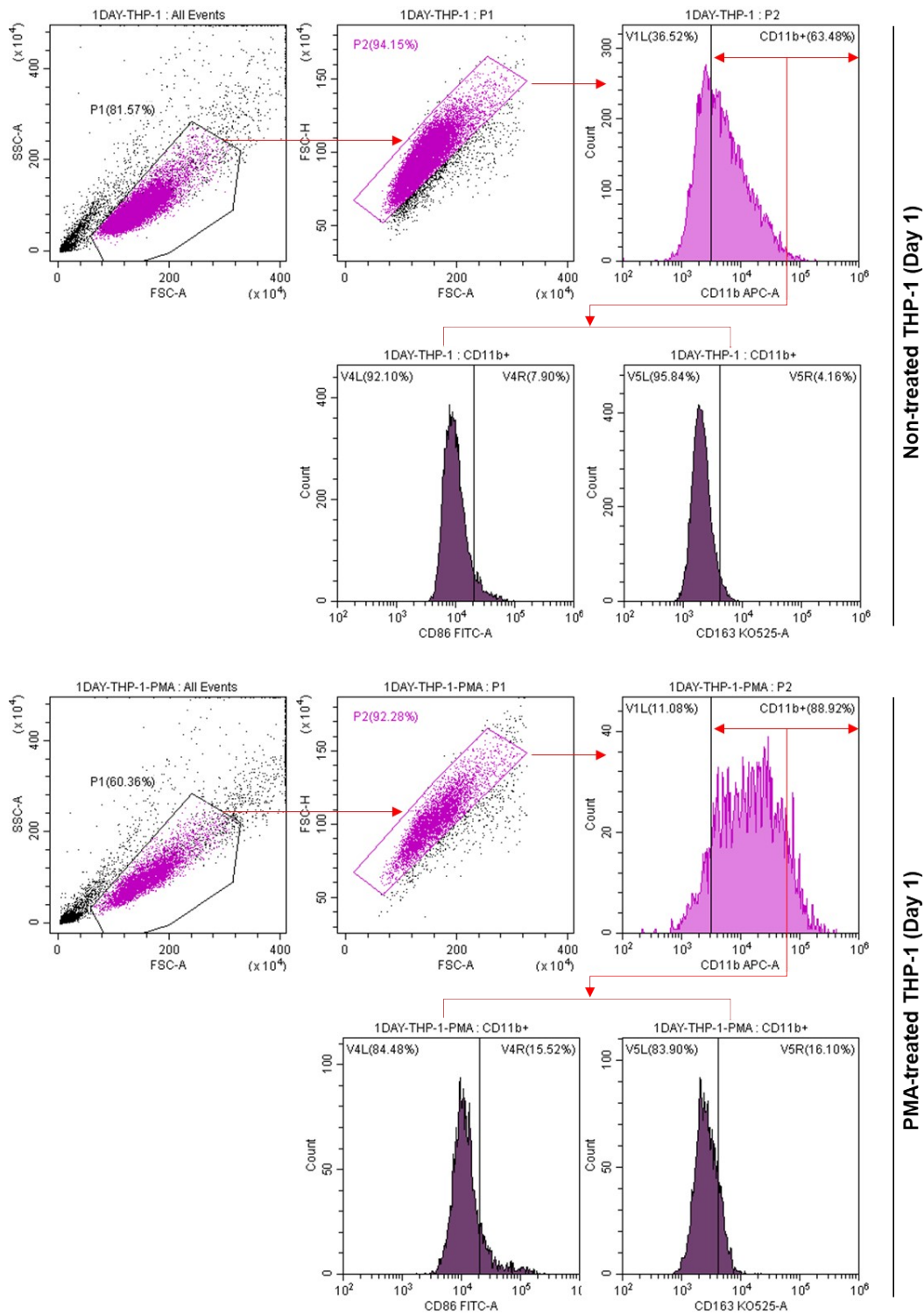


Figure S1. Flow cytometry (FACS) gating strategy.