

Supporting Information

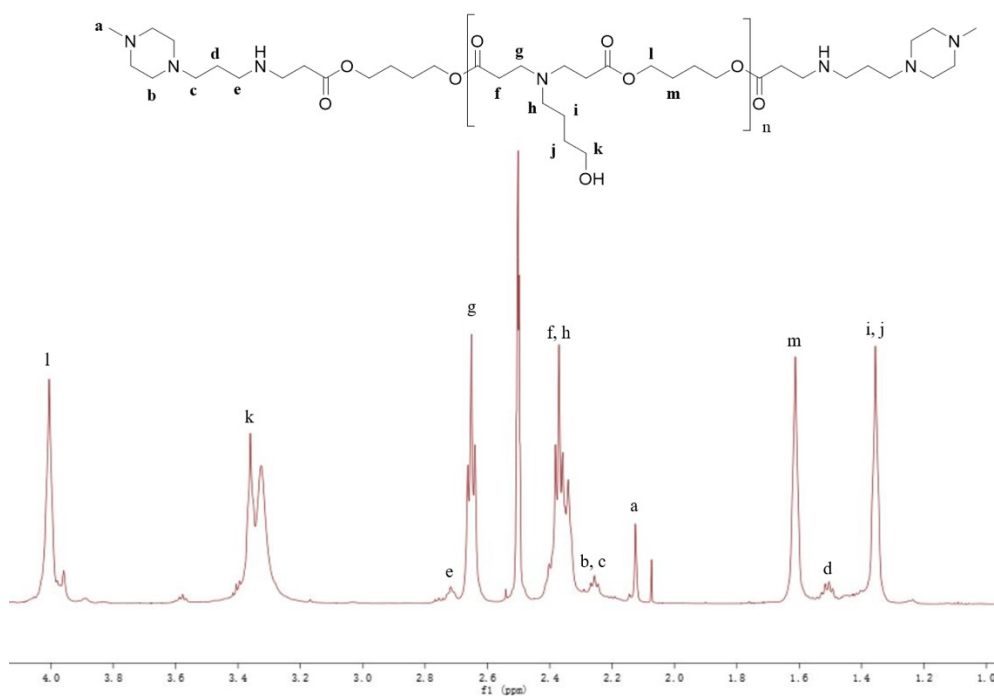


Fig. S1. ^1H NMR spectroscopy of P β AE-447

1.47-1.29 (m, $\text{NCH}_2\text{CH}_2\text{CH}_2\text{CH}_2\text{OH}$ and $\text{NCH}_2\text{CH}_2\text{CH}_2\text{CH}_2\text{OH}$)

1.55-1.47 (t, $\text{NCH}_2\text{CH}_2\text{CH}_2\text{N} <(\text{CH}_2\text{CH}_2)_2 > \text{NCH}_3$)

1.67-1.55 (m, $\text{COOCH}_2\text{CH}_2\text{CH}_2\text{CH}_2\text{OOC}$)

2.13(s, $\text{NCH}_2\text{CH}_2\text{CH}_2\text{N} <(\text{CH}_2\text{CH}_2)_2 > \text{NCH}_3$)

2.43-2.21 (t, $\text{COOCH}_2\text{CH}_2\text{NCH}_2\text{CH}_2\text{OOC}$ and t, $\text{NCH}_2\text{CH}_2\text{CH}_2\text{CH}_2\text{OH}$ and m,

$\text{NCH}_2\text{CH}_2\text{CH}_2\text{N} <(\text{CH}_2\text{CH}_2)_2 > \text{NCH}_3$)

2.69-2.58 (t, $\text{COOCH}_2\text{CH}_2\text{NCH}_2\text{CH}_2\text{OOC}$)

3.42-3.34 (m, $\text{NCH}_2\text{CH}_2\text{CH}_2\text{CH}_2\text{OH}$)

4.05-3.97 (m, $\text{COOCH}_2\text{CH}_2\text{CH}_2\text{CH}_2\text{OOC}$)

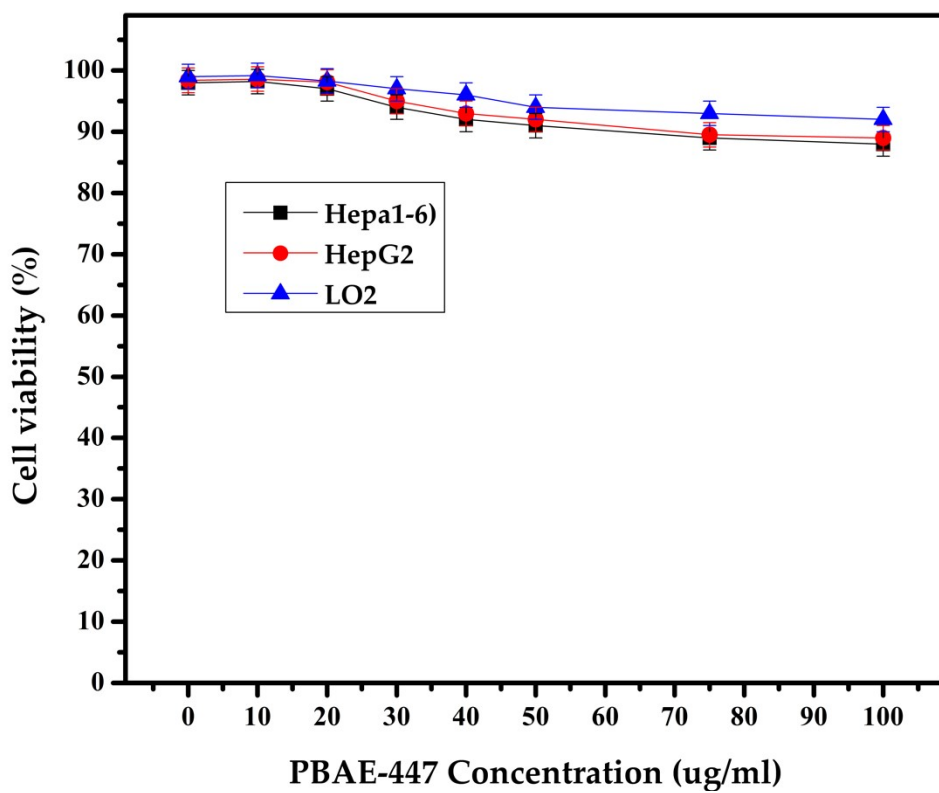


Fig. S2. Viability analysis of Hepa 1-6, HepG2 and LO2 cells after incubation with blank PBAE-447 at varying concentrations

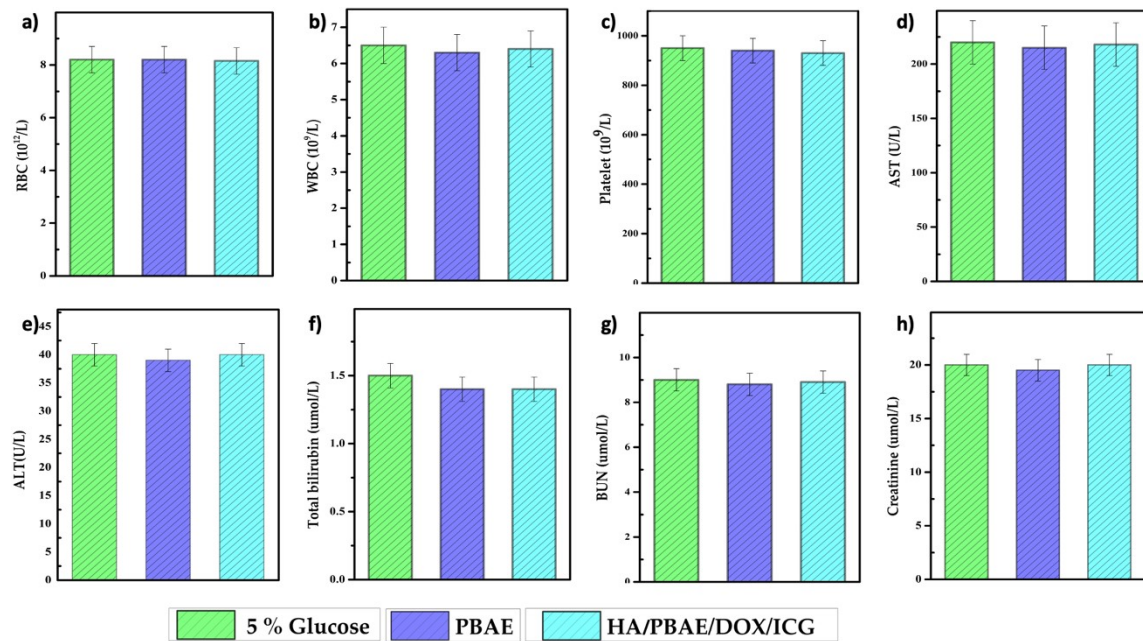


Fig. S3 (A) RBC, (B) WBC, (C) platelet counts, (D) AST, (E) ALT, (F) total bilirubin, (G) BUN and (H) creatinine levels after intravenous treatment in C57BL/6 (n=3).