

Supporting Information

Mung Bean-Derived Carbon Dots Suppress Ferroptosis of Schwann Cells via Nrf2/HO-1/GPX4 Pathway to Promote Peripheral Nerve Repair

Fei Zheng^{1#}, Yumin Zhang^{2#}, Hui Zhou¹, Jiangnan Li¹, Junyang Gao¹, Xiaoli Qu^{3*}, Xuejian Wu^{1*}, Siyu Lu⁴, Yuanyi Wang^{5*}, Nan Zhou¹

1. Department of Orthopedics, The First Affiliated Hospital of Zhengzhou University, Zhengzhou University, Zhengzhou 450052, China;
2. Department of Geriatric Endocrinology, The First Hospital Affiliated to Nanjing Medical University, Nanjing, Jiangsu 210029, China;
3. Erythrocyte Biology Laboratory, School of Life Sciences, Zhengzhou University, Zhengzhou 450001, China;
4. Green Catalysis Center, and College of Chemistry, Zhengzhou University, Zhengzhou 450001, China;
5. Department of Spine Surgery, The First Hospital of Jilin University, Changchun, 130021, China;

These authors contributed equally: Fei Zheng, Yumin Zhang

Corresponding authors:

Xuejian Wu: wuxuejianzz@126.com

Xiaoli Qu: qv1110xiaoli@126.com

Yuanyi Wang: wangyuanyi@jlu.edu.cn

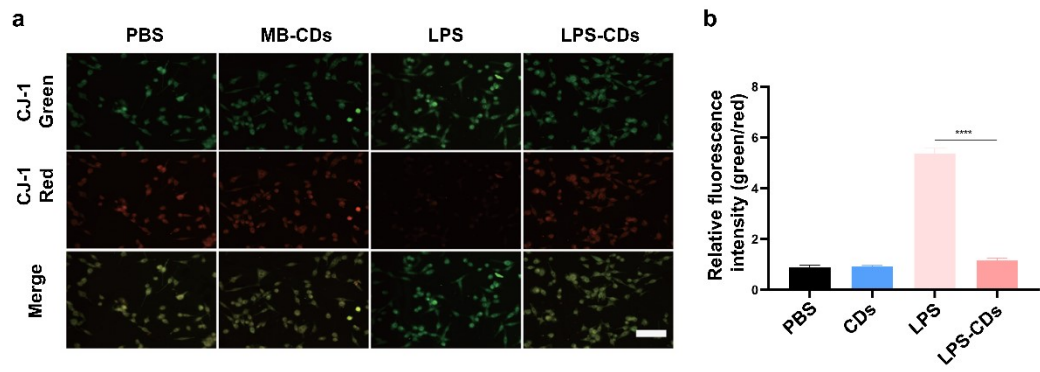


Figure S1. Mitochondrial membrane potential. (a) Effects of MB-CDs on the $\Delta\Psi_m$ in LPS-stimulated SC. Scale bar, 50 μm . (b) Data were expressed as the mean \pm SD (n = 3). **** P < 0.0001.

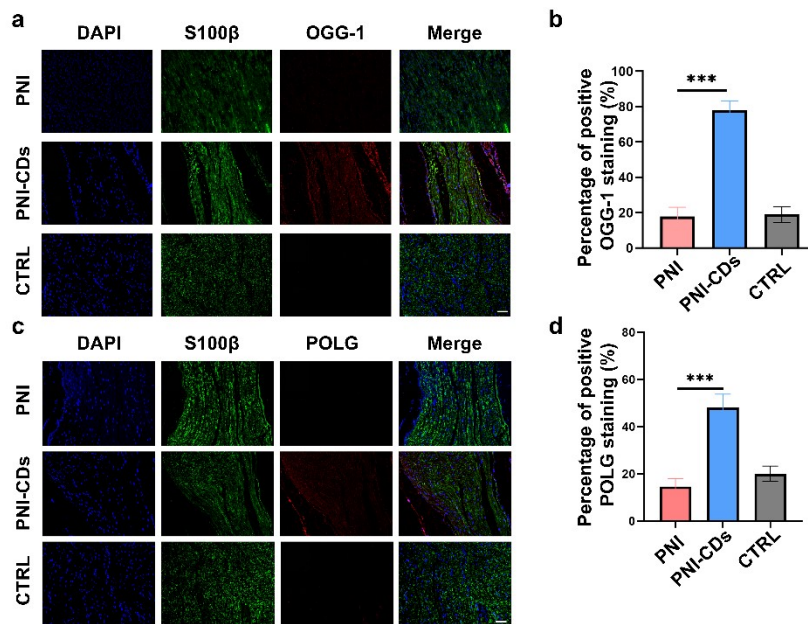


Figure S2. Expression of mitochondrial repair related proteins and cellular stress response

related proteins. (a) OGG-1 (red) and S100β (green) double immunofluorescence staining of

sciatic nerve longitudinal sections at 7 days following the operation. Nuclei were stained with DAPI.

Scale bar, 50 μm. **(b)** Statistical analysis of different groups. The data are expressed as mean ± SD

(n=3). **(c)**. POLG (red) and S100β (green) double immunofluorescence staining of sciatic nerve

longitudinal sections at 7 days following the operation. Nuclei were stained with DAPI. Scale bar,

50 μm. **(d)** Statistical analysis of different groups. The data are expressed as mean ± SD (n=3).

*** $P < 0.001$

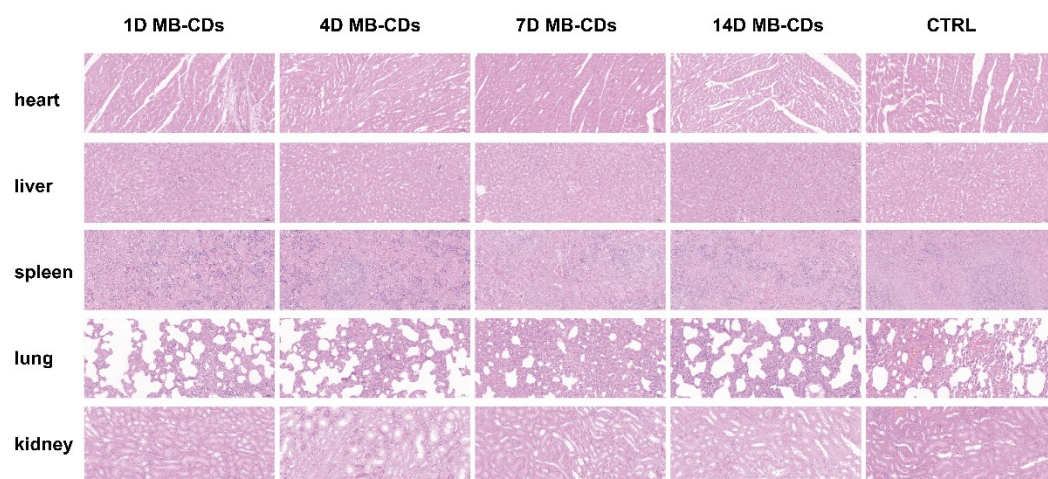


Figure S3. The biosafety of MB-CDs in vivo. Scale bar, 50 μ m.

Figure 6c

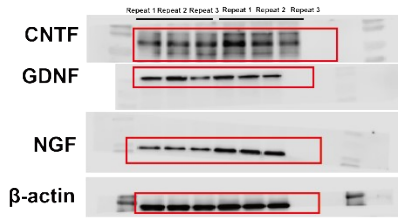


Figure 9f

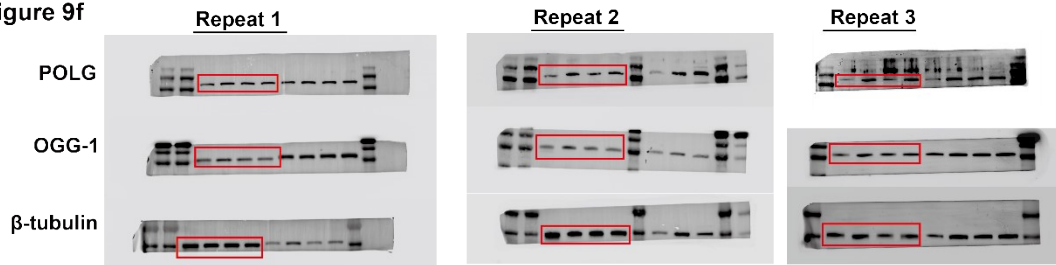


Figure 9i

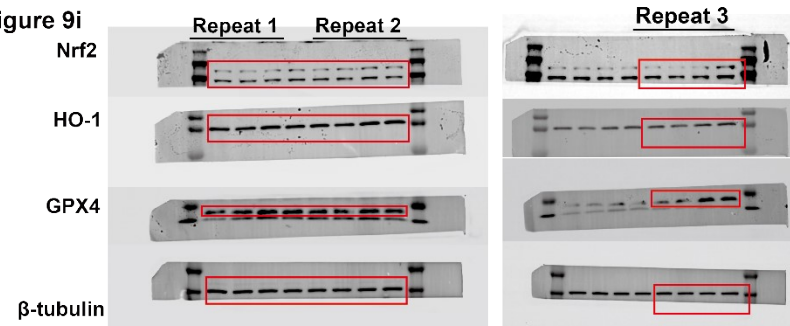


Figure 9m

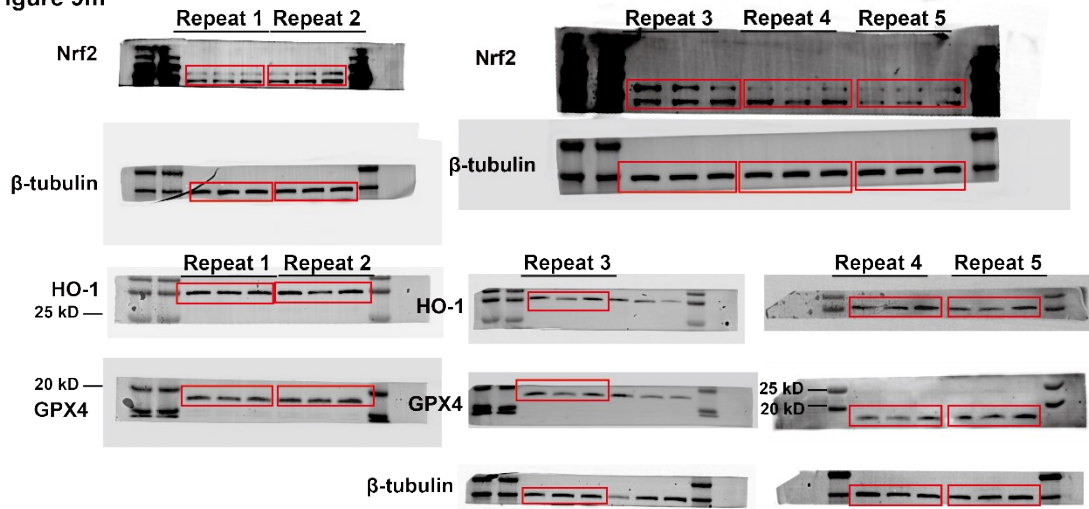


Figure S4. Uncropped and unprocessed gels for western blots.

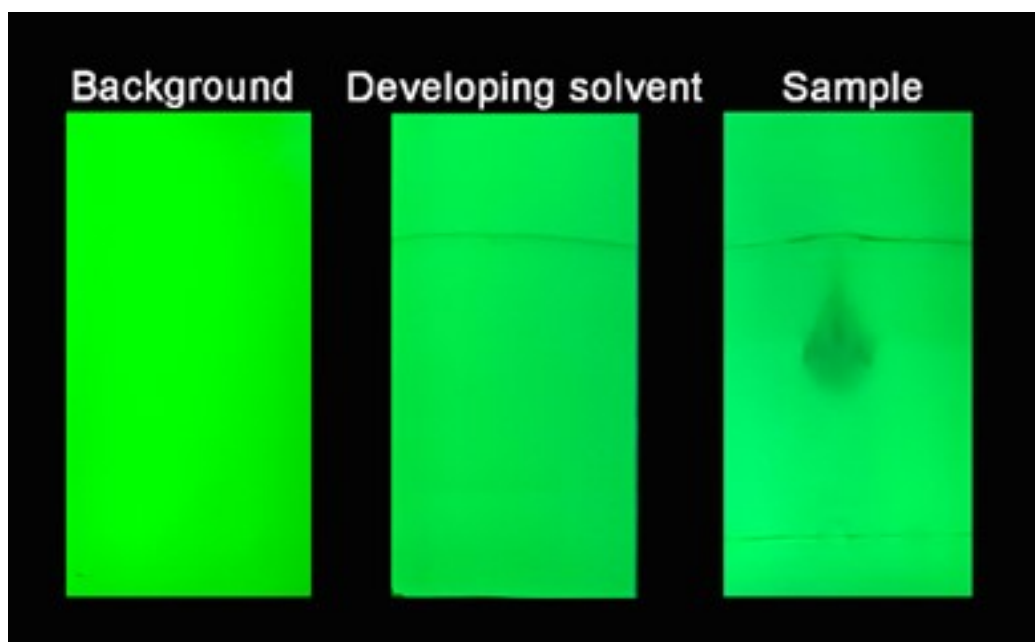


Figure S5. Thin layer chromatographic analysis of Mung Bean carbon dots (methanol: ethyl acetate = 2:3)