

Supporting information for

Large tensile-strained BaTiO₃ films grown on lattice-mismatched La-doped BaSnO₃ bottom electrode

Lizhikun Gong¹, Ko Marunouchi¹, Akira Chikamatsu², Hiromichi Ohta³, and Tsukasa Katayama^{3,4*}

¹Graduate School of Information Science and Technology, Hokkaido University, N14W9, Sapporo 060-0814, Japan

²Department of Chemistry, Faculty of Science, Ochanomizu University, 2-1-1 Otsuka, Bunkyo, Tokyo 112-8610, Japan

³Research Institute for Electronic Science, Hokkaido University, N20W10, Sapporo 001-0020, Japan

⁴JST-PRESTO, Kawaguchi, Saitama 332-0012, Japan

*Corresponding author: katayama@es.hokudai.ac.jp

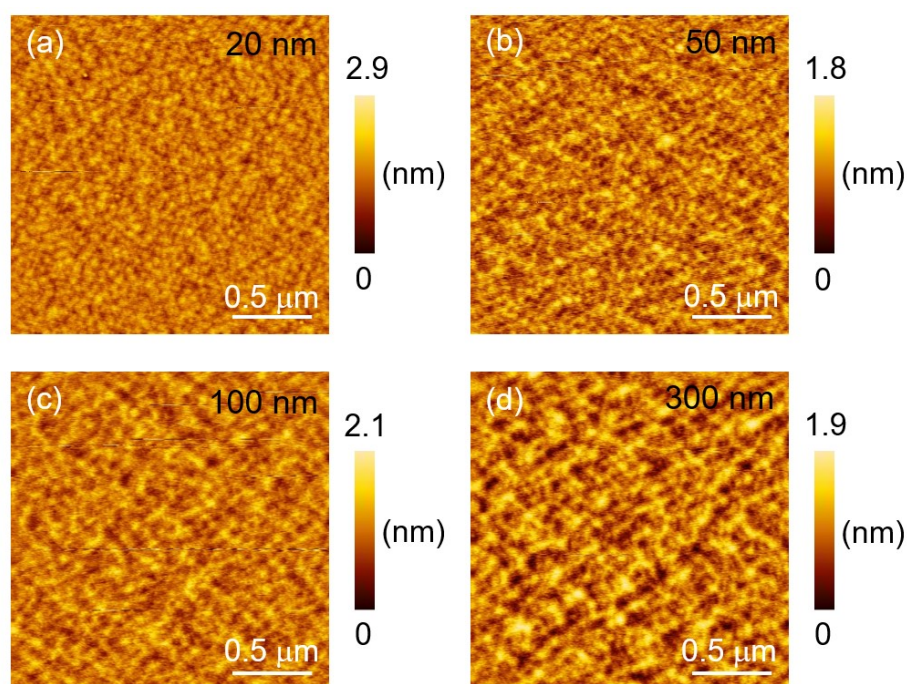


Figure S1. Topographic AFM images for the BaTiO₃ films. t_{BTO} = (a) 20, (b) 50, (c) 100, and (d) 300 nm.