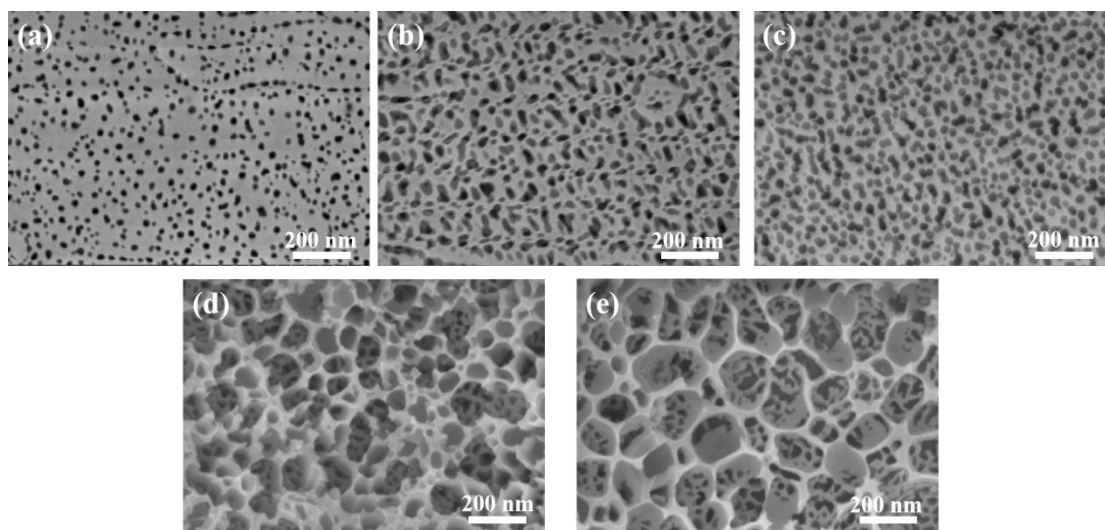
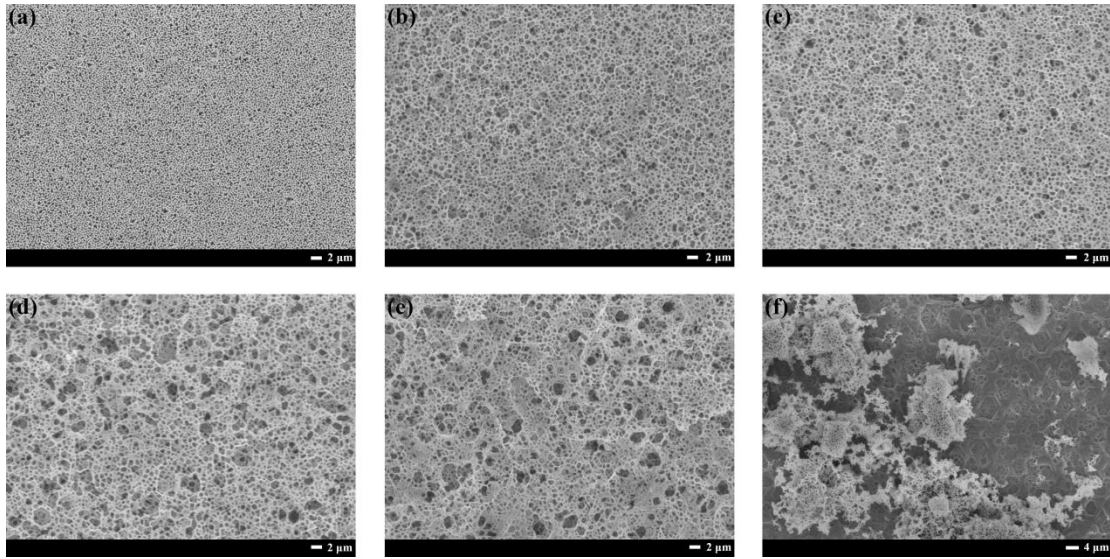


**Table 1. Parametric Conditions for High Temperature Molten Alkali Corrosion**

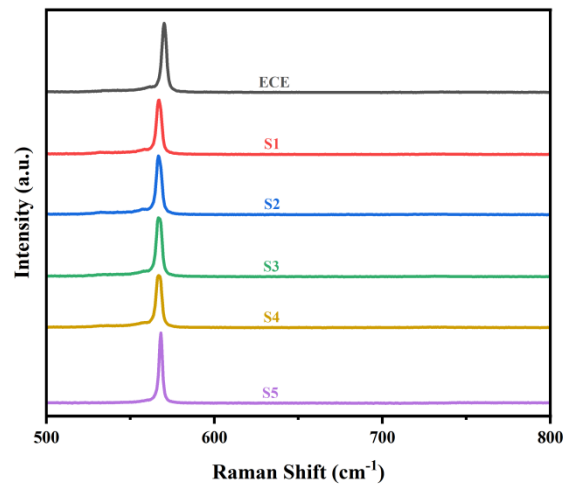
Sample	Molten Alkali Temperature(°C)	Corrosion Time (s)
1	300	30
2	300	120
3	300	240
4	320	30
5	340	30



**Figure S1.** SEM images of the surface of porous GaN substrate obtained by etching time 10 min with different etching voltages (a) 7V, (b) 10V, (c) 15V, (d) 20V, (e) 25V.



**Figure S2.** SEM images of MOCVD-GaN/sapphire substrate after ECE (a) and further etching by molten alkali under different conditions (b) 300 °C for 30 s; (c) 320 °C for 30 s; (d) 340 °C for 30 s; (e) 300 °C for 2 min; (f) 300 °C for 4 min.



**Figure S3.** Raman spectra of samples under different etching conditions.