

## Supplementary Information

### Bulk crystal growth and characterization of non-centrosymmetric Single crystal $\text{CaTa}_4\text{O}_{11}$

Yueshen Zhou,<sup>ab</sup> Dongsheng Yuan<sup>\*a</sup> and Kiyoshi Shimamura<sup>\*ab</sup>

<sup>a</sup> National Institute for Materials Science, Tsukuba 305-0044, Japan.

<sup>b</sup> Graduate School of Advanced Science and Engineering, Waseda University, Shinjuku, Tokyo 169-8555, Japan.

\* YUAN.dongsheng@nims.go.jp, SHIMAMURA.Kiyoshi@nims.go.jp

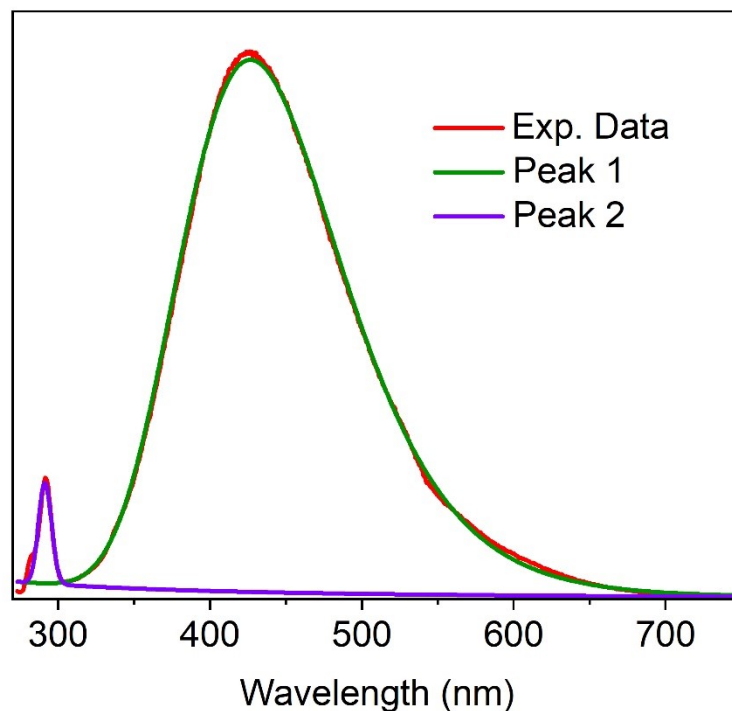


Fig. S1 The fitted PL emission spectrum of  $\text{CaTa}_4\text{O}_{11}$  single crystals.