

Electronic supplementary information (ESI)

Thiadiazole-functionalized Pb(II)-MOF for “Turn-on” Fluorescence Selective Sensing of Al³⁺

Hangchuan Zhang,^a Jingpeng Guo,^a Lin Liu,^{*b} Zhan Yu^a and Na Wei^{*a}

^aInstitute of Catalysis for Energy and Environment, College of Chemistry and Chemical Engineering, Shenyang Normal University, Shenyang 110034 Liaoning, China. E-mail: wwweina@126.com

^bCollege of Chemistry, Liaoning University, Shenyang 110036 Liaoning, China. E-mail: liulin@lnu.edu.cn.

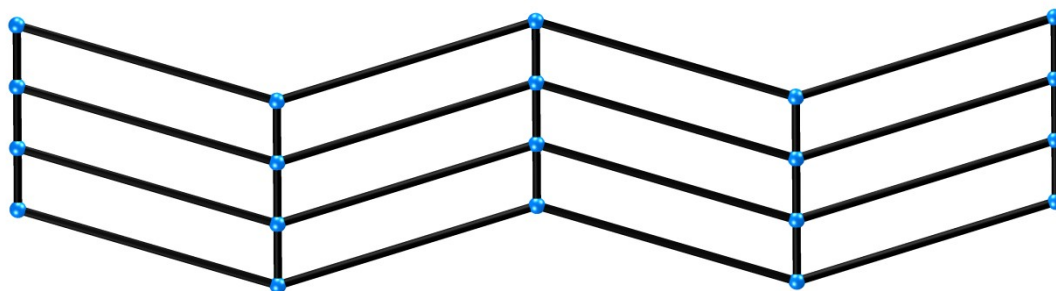


Fig. S1 Schematic representation of the (4,2)-connected net of Pb-BTDB

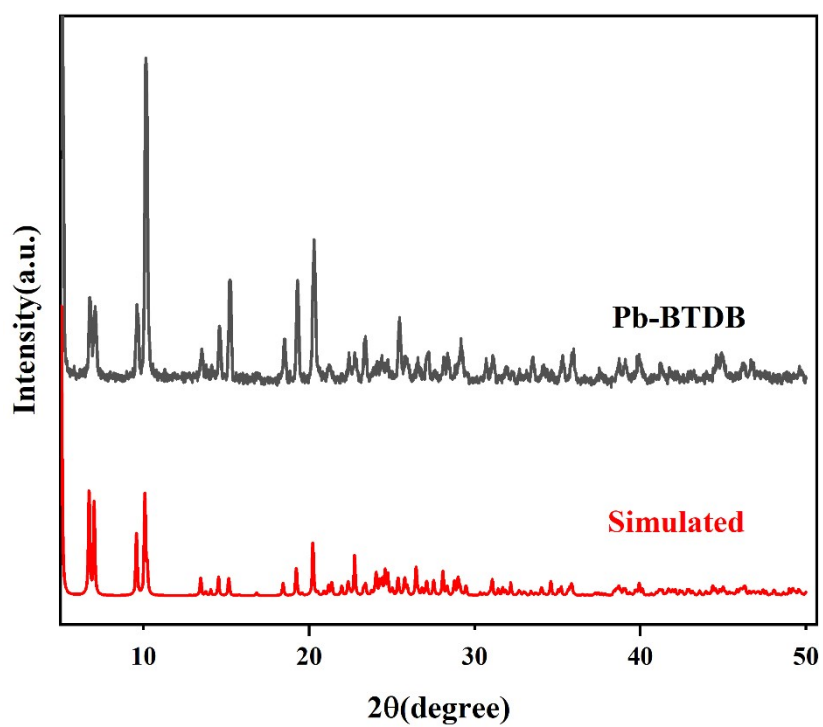


Fig. S2 PXRD pattern of Pb-BTDB

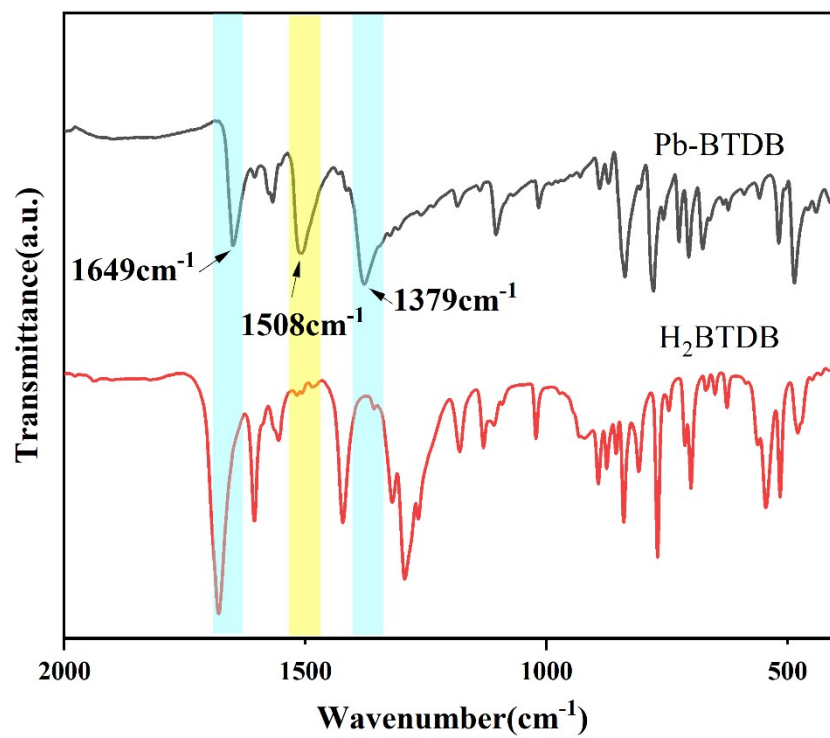


Fig. S3 FT-IR spectra of Pb-BTDB and H₂BTDB ligand

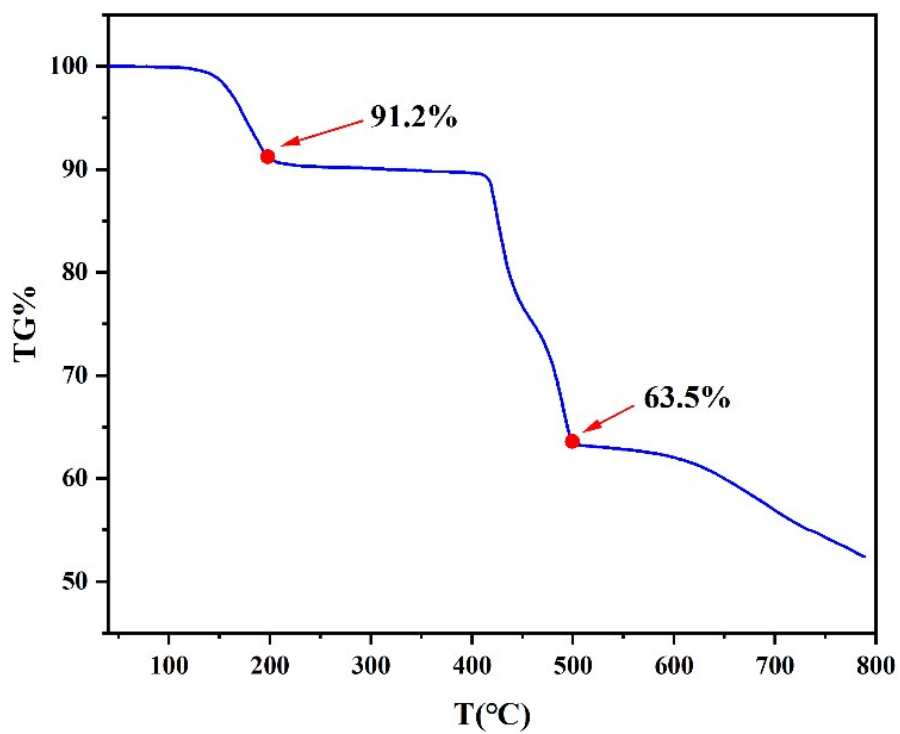


Fig. S4 TGA curve of Pb-BTDB

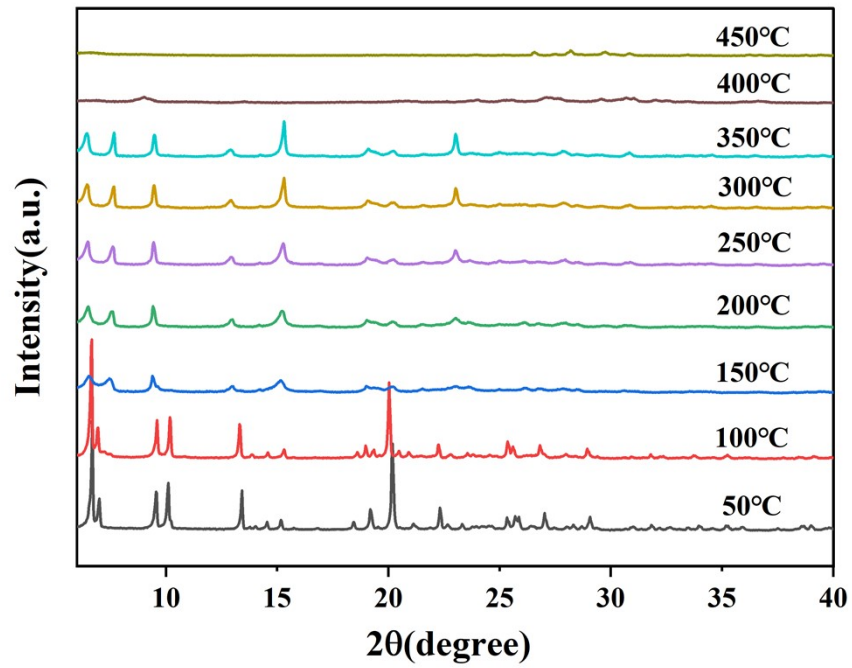


Fig. S5 Variable-temperature PXRD patterns of Pb-BTDB

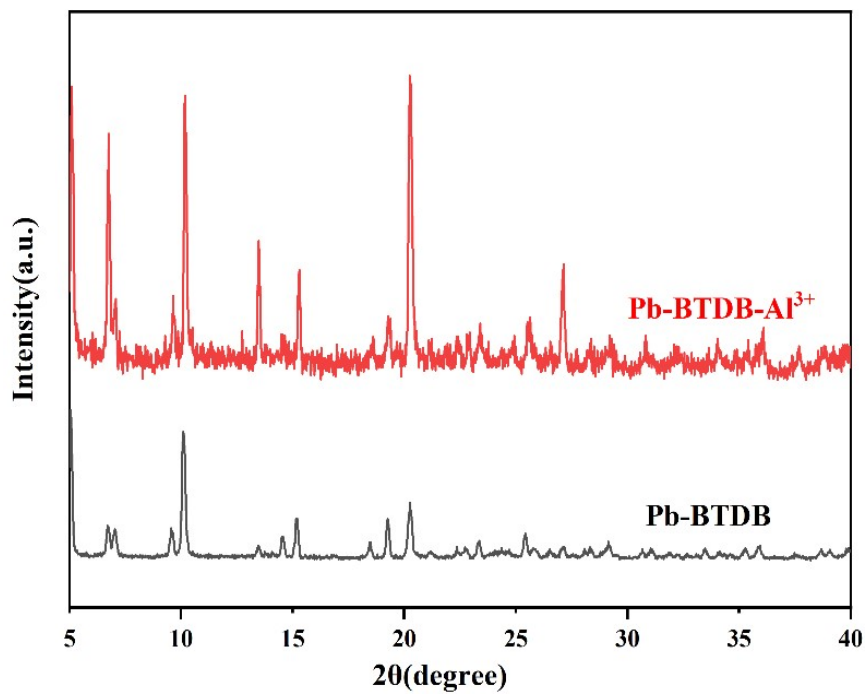


Fig. S6 PXRD patterns of Pb-BTDB before and after treatment with Al^{3+}

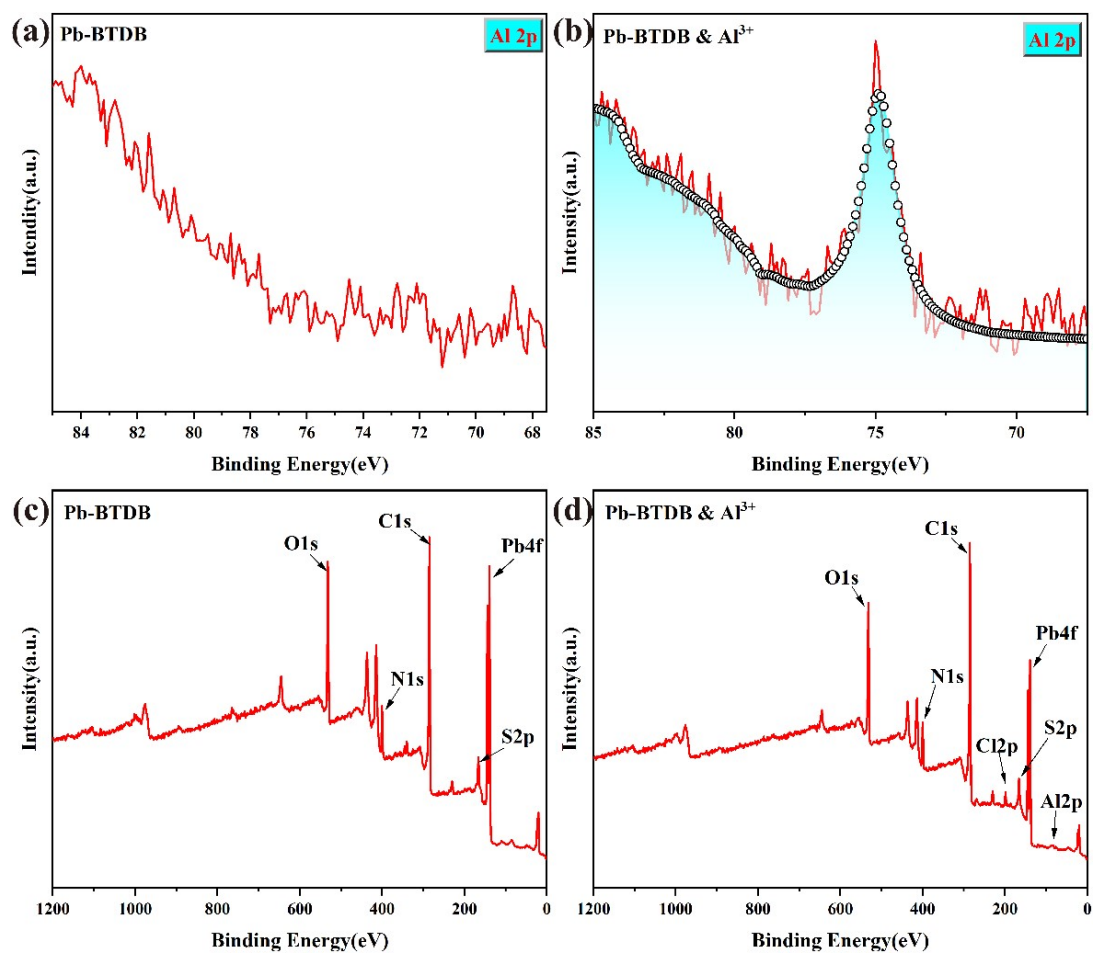


Fig. S7 XPS spectra of Al 2p (a)(b) and survey (c)(d) for Pb-BTDB before and after treatment with Al^{3+}