

Supporting Information

Specific interaction between DSPHTELP peptide and various functional groups

Haeun Kwon^{1†}, Seongeon Jin^{2†}, Jina Ko¹, Jungki Ryu^{1,3,4,5}, Ja-Hyoung Ryu^{2*}, Dong Woog Lee^{1*}

¹ School of Energy and Chemical Engineering, Ulsan National Institute of Science and Technology (UNIST), 50 UNIST-gil, Ulsan, 44919, Republic of Korea

² Department of Chemistry, School of Natural Sciences, Ulsan National Institute of Science and Technology (UNIST), 50 UNIST-gil, Ulsan, 44919, Republic of Korea

³ Emergent Hydrogen Technology R&D center, Ulsan National Institute of Science and Technology (UNIST), Ulsan 44919, Republic of Korea

⁴ Graduate School of Carbon Neutrality, Ulsan National Institute of Science and Technology (UNIST), Ulsan 44919, Republic of Korea.

⁵ Center for Renewable Carbon, Ulsan National Institute of Science and Technology (UNIST), Ulsan 44919, Republic of Korea.

† These authors contributed equally to this work

* Corresponding authors: jhryu@unist.ac.kr (J-H Ryu), dongwoog.lee@unist.ac.kr (DW Lee)

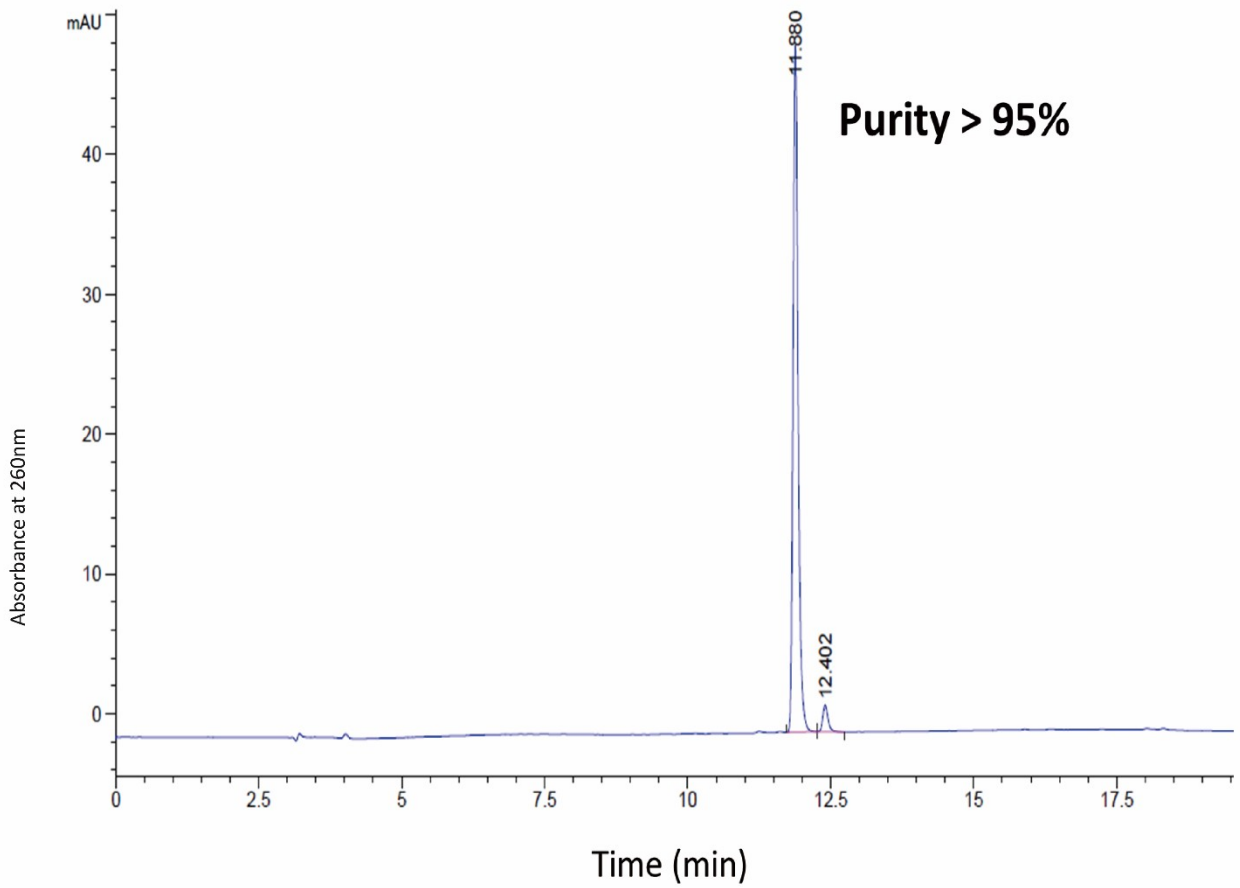


Fig. S1. HPLC chromatogram of synthesized and purified 8-mer peptide. The x-axis is time (min), and the y-axis is the absorbance at 260nm (mAU).

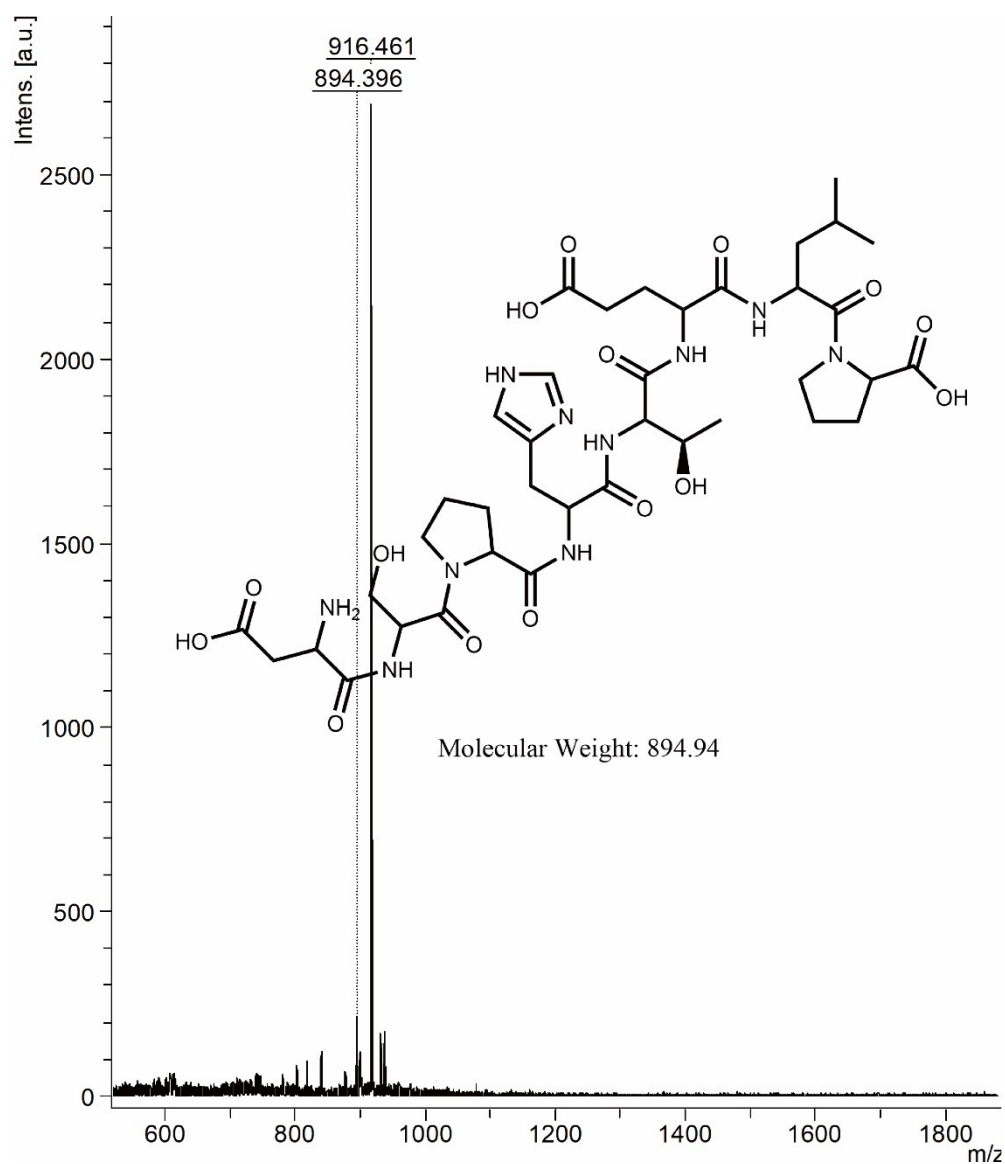


Fig. S2. Matrix-Assisted Laser Desorption/Ionization time-of-flight (MALDI-TOF/TOF) mass spectra of synthesized 8-mer peptide. The x-axis is the m/z (mass-to-charge) ratio, and y-axis is the intensities of the detected compounds.

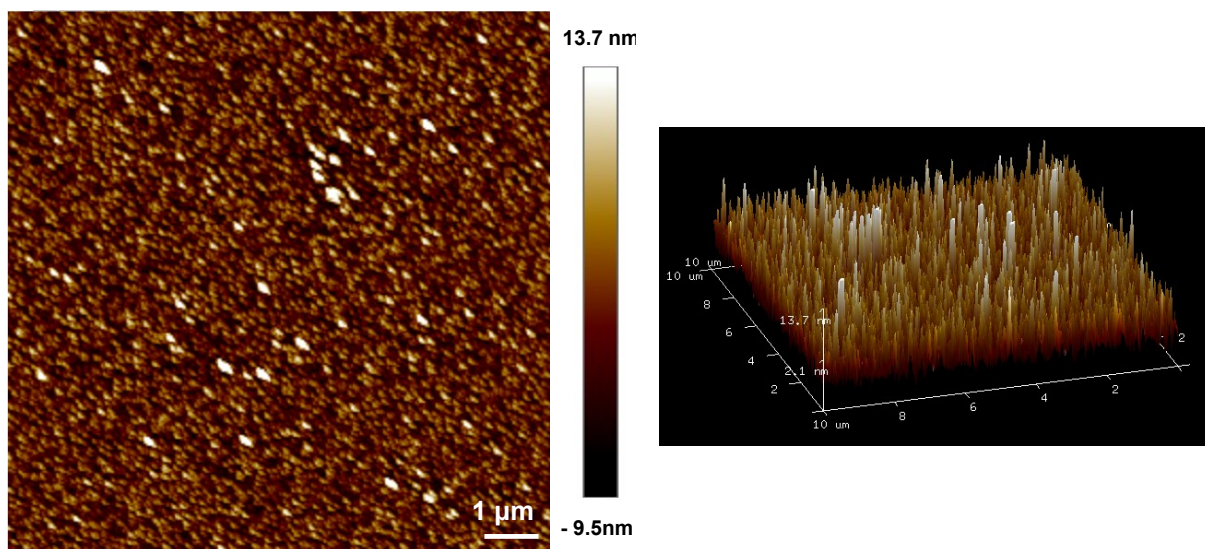


Fig. S3. AFM image of the DSPHTELP-peptide (scale bar = 1 μm).

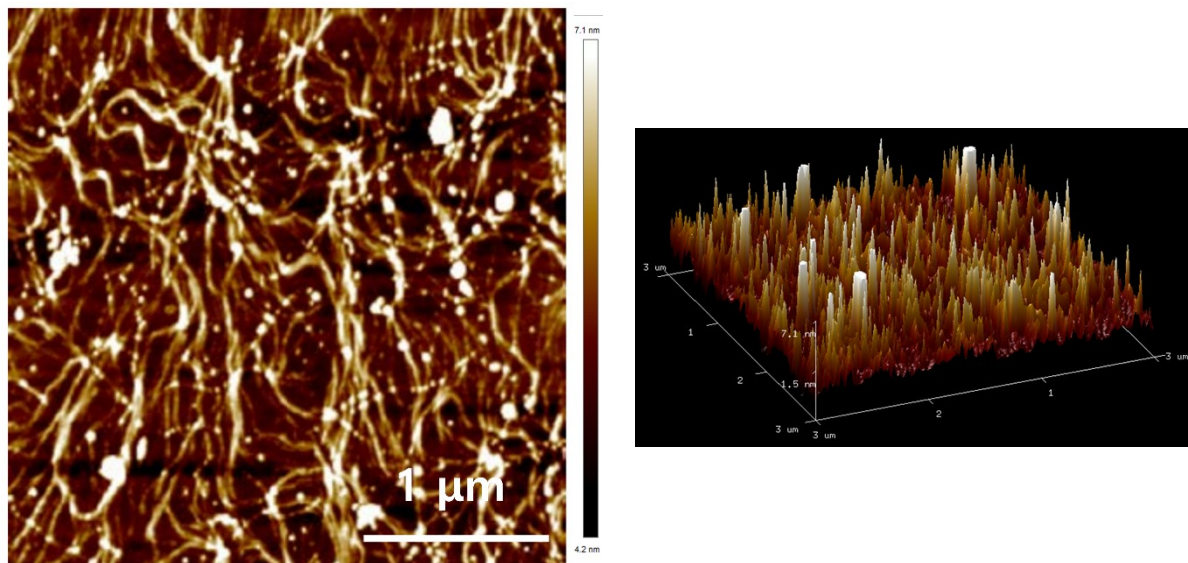


Fig. S4. AFM image of the M13 bacteriophages with DSPHTELP sequences (scale bar = 1 μm).¹

Supplementary References

1. C. Lim, J. Ko, D. Jeon, Y. Song, J. Park, J. Ryu and D. W. Lee, *Communications Chemistry*, 2019, **2**, 96.