

**Associations between polycyclic aromatic hydrocarbon exposure and
cognitive performance in older adults: a cross-sectional study from
NHANES 2011-2014**

Zerong Guan^{a#}, Xueqiong Weng^{b#}, Ligang Zhang^c, Peiran Feng^{a,d*}

^aThe First Affiliated Hospital, Jinan University, Guangzhou 510630, China

^bJC School of Public Health and Primary Care, The Chinese University of Hong
Kong, Hong Kong SAR, China

^cSchool of Medicine, Foshan University, Foshan 528225, China

^dThe Fifth Affiliated Hospital (Heyuan Shenhe People's Hospital), Jinan University,
Heyuan 517000, China

[#]Zerong Guan and Xueqiong Weng contributed to this article equally.

*Correspondence: Peiran Feng (P-R.F, fengpr@jnu.edu.cn)

Tel: +86-15711937223 (P-R.F)

Supplemental Files

Table S1. Distribution of PAH metabolites (N=772), NHANES, USA, 2011-2014.

Table S2. BKMR models of group inclusion and conditional inclusion for posterior inclusion probabilities (PIPs).

Table S3. The estimated differences and their 95% CIs of specific percentile.

Fig.S1 Directed acyclic graph of hypothesized associations between PAHs exposures and cognitive function.

Fig.S2 Pearson correlation coefficients among 5 PAH metabolites (N=772), NHANES, USA, 2011-2014.

Fig.S3 Association between weighted OH-PAHs and the z-score of IRT, DRT, AFT, DSST.

Table S1 Distribution of PAHs metabolites (N=772), NHANES, USA, 2011-2014.

PAH ($\mu\text{g/L}$)	Detection frequency	GM	Mean	Percentile				
				5th	25th	50th	75th	95th
1-NAP	99.74%	1.83	46.29	0.26	0.70	1.41	3.49	21.87
2-NAP	100.00%	3.41	6.74	0.56	1.48	3.42	7.41	21.82
3-FLUO	96.37%	0.07	0.16	0.01	0.03	0.06	0.13	0.66
2-FLUO	100.00%	0.17	0.35	0.03	0.08	0.15	0.31	1.25
1-PHEN	99.22%	0.10	0.16	0.02	0.06	0.10	0.18	0.46

Table S2 BKMR models of group inclusion and conditional inclusion for posterior inclusion probabilities (PIPs).

OH-PAHs	Group	IRT z-score		DRT z-score		AFT z-score		DSST z-score	
		groupPIP	condPIP	groupPIP	condPIP	groupPIP	condPIP	groupPIP	condPIP
1-NAP	1	0.177	1.000	0.115	1.000	0.5697	1.000	0.426	1.000
2-NAP	2	0.193	1.000	0.154	1.000	0.599	1.000	0.717	1.000
3-FLUO	3	0.633	0.224	0.723	0.322	0.703	0.500	0.545	0.621
2-FLUO	3	0.633	0.776	0.723	0.678	0.703	0.500	0.545	0.379
1-PHEN	4	0.272	1.000	0.113	1.000	0.601	1.000	0.355	1.000

Note: adjusting for age, gender, race, education, family PIR, physical activity, serum cotinine, alcohol drinking, stroke, diabetes, hypertension, BMI and urinary creatinine. IRT, Immediate Recall test; DRT, Delayed Recall test; AFT, Animal Fluency test; DSST, Digit Symbol Substitution test.

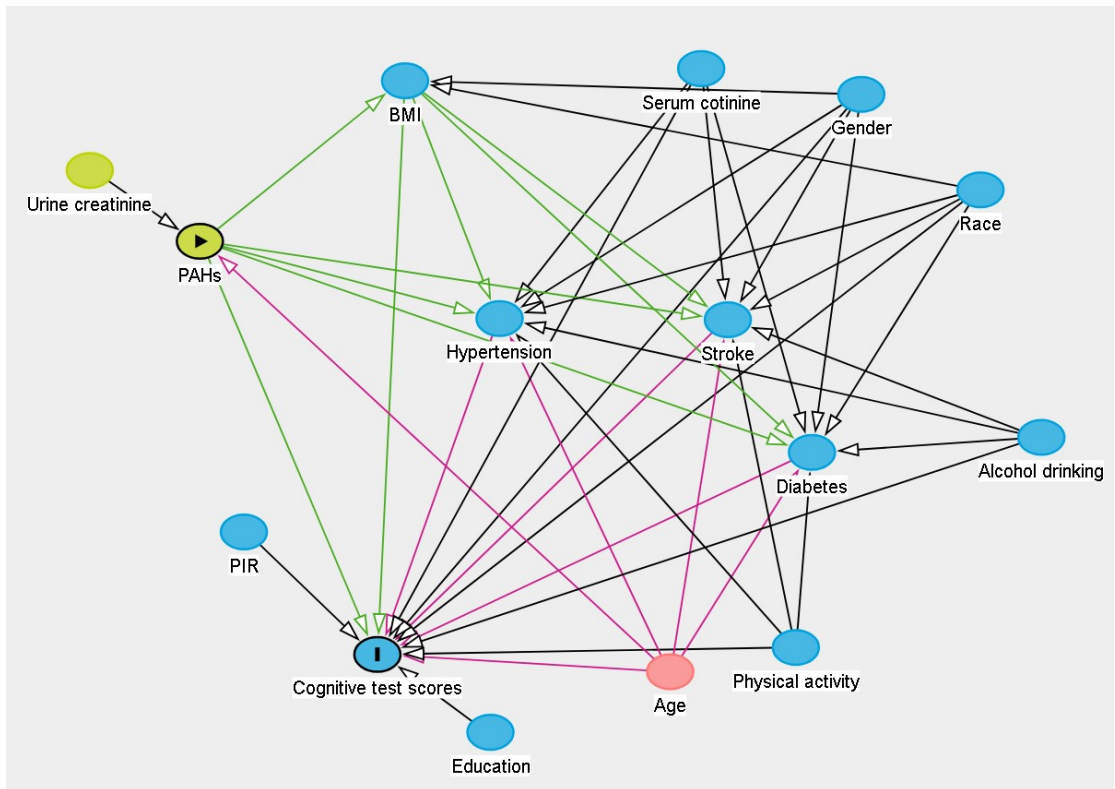
Table S3 The estimated differences and their 95% CIs of specific percentile

Percentile	IRT z-score		DRT z-score		AFT z-score		DSST z-score	
	Est	95% CI	Est	95% CI	Est	95% CI	Est	95% CI
25th	0.046	-0.016~0.107	0.064	0.001~0.126	0.004	-0.039~0.048	0.057	0.000~0.114
30th	0.035	-0.012~0.081	0.045	-0.002~0.092	0.003	-0.031~0.037	0.045	0.003~0.088
35th	0.022	-0.011~0.055	0.029	-0.005~0.063	0.003	-0.022~0.027	0.035	0.005~0.065
40th	0.009	-0.016~0.033	0.013	-0.012~0.038	0.002	-0.015~0.019	0.028	0.005~0.051
45th	0.004	-0.008~0.017	0.004	-0.009~0.017	0.001	-0.008~0.010	0.012	0.001~0.023
50th	0.000	0.000~0.000	0.000	0.000~0.000	0.000	0.000~0.000	0.000	0.000~0.000
55th	-0.013	-0.025~-0.001	-0.012	-0.024~0.001	0.000	-0.009~0.008	-0.009	-0.020~0.001
60th	-0.023	-0.049~0.003	-0.019	-0.046~0.007	-0.002	-0.021~0.018	-0.026	-0.050~-0.003
65th	-0.029	-0.066~0.008	-0.023	-0.061~0.014	-0.002	-0.031~0.026	-0.039	-0.072~-0.006
70th	-0.032	-0.083~0.018	-0.027	-0.078~0.025	-0.003	-0.041~0.034	-0.056	-0.101~-0.010
75th	-0.045	-0.112~0.022	-0.033	-0.101~0.035	-0.005	-0.054~0.045	-0.075	-0.134~-0.016

Note: adjusting for age, gender, race, education, family PIR, physical activity, serum cotinine, alcohol drinking,

stroke, diabetes, hypertension, BMI and urinary creatinine. IRT, Immediate Recall test; DRT, Delayed Recall

test; AFT, Animal Fluency test; DSST, Digit Symbol Substitution test.



● exposure
 ● outcome
 ● ancestor of exposure
 ● ancestor of outcome
● ancestor of exposure *and* outcome
— causal path
— biasing path

Fig S1. Directed acyclic graph of hypothesized associations between PAHs exposures and cognitive function.

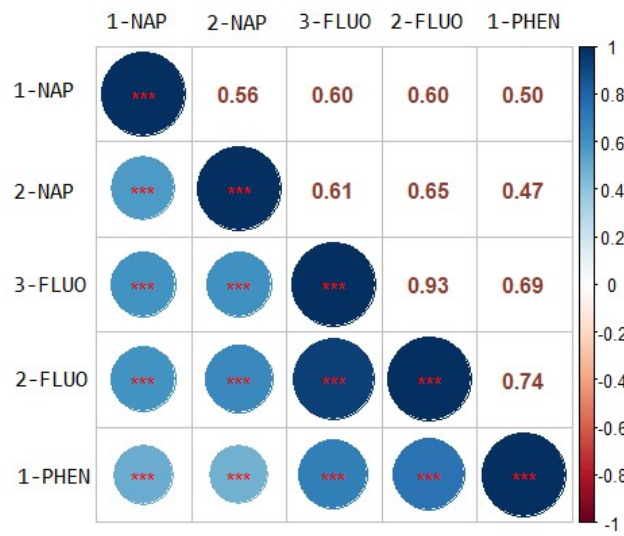


Fig.S2 Pearson correlation coefficients among 5 PAHs metabolites (N=772), NHANES, USA, 2011-2014. *

P < 0.05; **, P < 0.01; ***, P < 0.001.

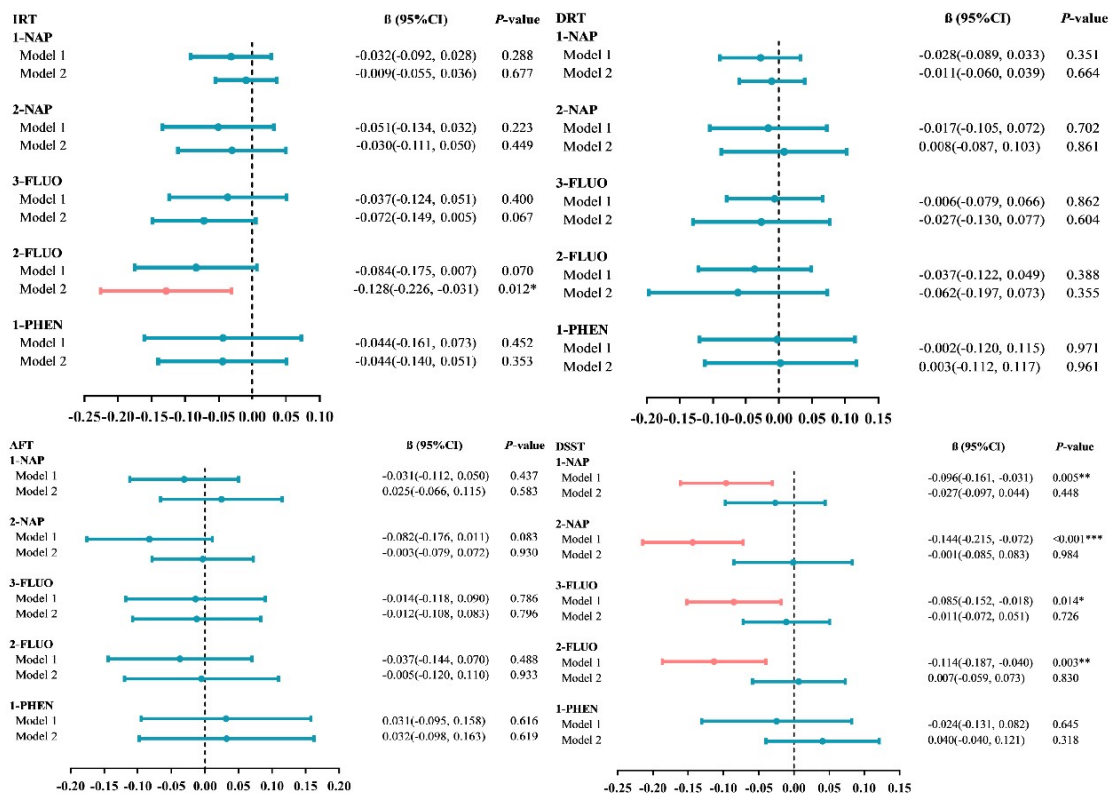


Fig.S3 Association between weighted OH-PAHs and the z-score of IRT, DRT, AFT, DSST. Model 1: unadjusted model. Model 2: adjusted for age, gender, race, education, family PIR, physical activity, serum cotinine, alcohol drinking, stroke, diabetes, hypertension, BMI, and urinary creatinine. *, $P < 0.05$; **, $P < 0.01$; ***, $P < 0.001$. IRT, Immediate Recall test; DRT, Delayed Recall test; AFT, Animal Fluency test; DSST, Digit Symbol Substitution test.