

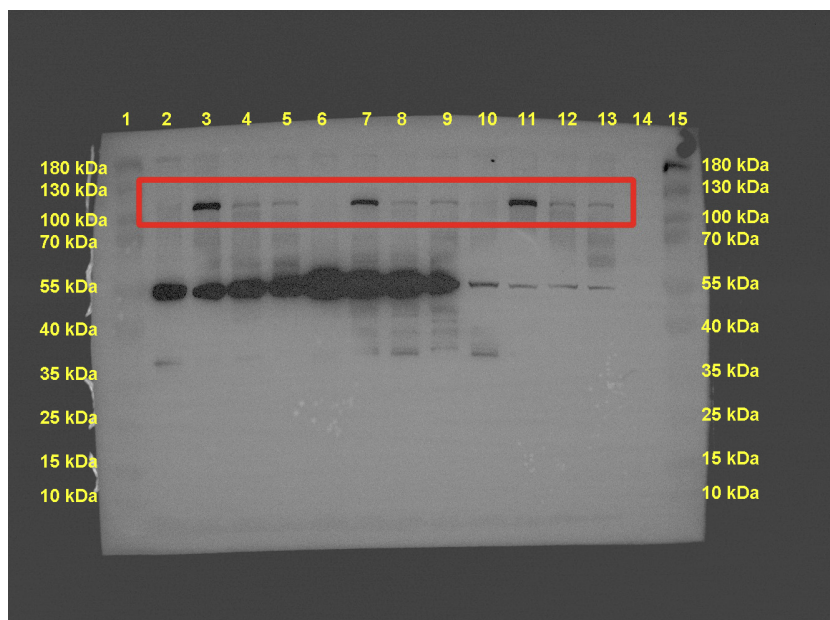
p-PERK, 125 kDa

Sample loading order:

Lane 2-5: Control-vehicle/DSS-vehicle/Control-blueberry/DSS-blueberry

Lane 6-9: Control-vehicle/DSS-vehicle/Control-blueberry/DSS-blueberry

Lane 10-13: Control-vehicle/DSS-vehicle/Control-blueberry/DSS-blueberry



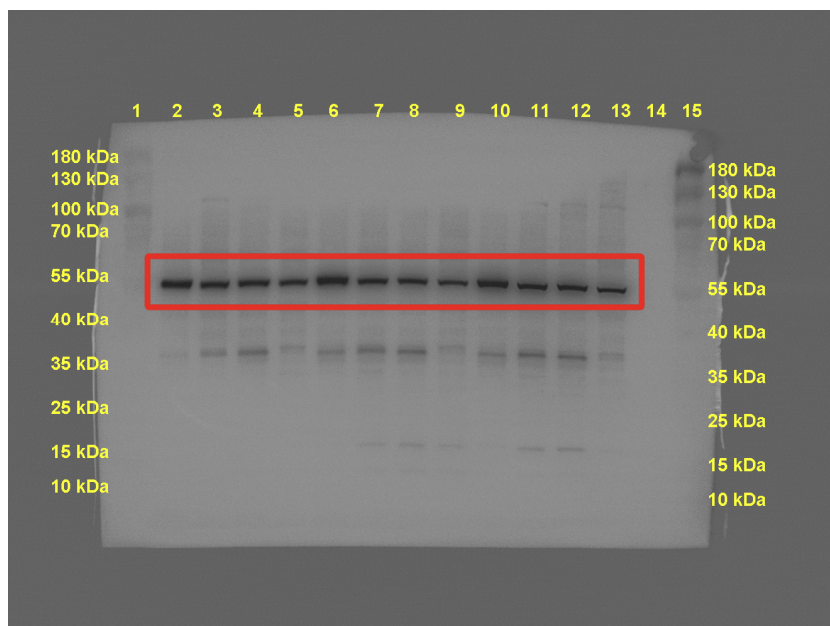
Same membrane, internal reference, alpha-tubulin, 50 kDa

Sample loading order:

Lane 2-5: Control-vehicle/DSS-vehicle/Control-blueberry/DSS-blueberry

Lane 6-9: Control-vehicle/DSS-vehicle/Control-blueberry/DSS-blueberry

Lane 10-13: Control-vehicle/DSS-vehicle/Control-blueberry/DSS-blueberry



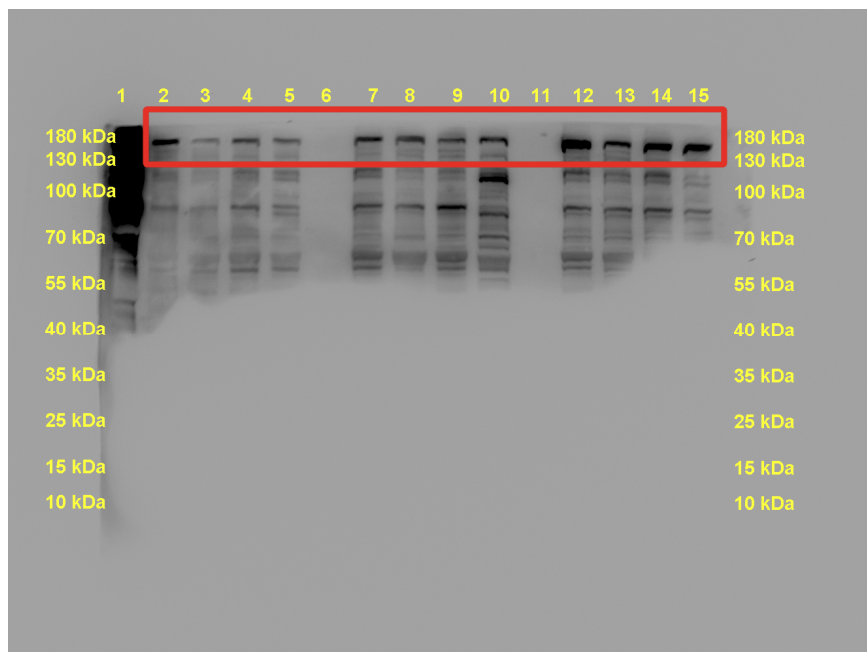
PERK, 170 kDa

Sample loading order:

Lane 2-5: Control-vehicle/DSS-vehicle/Control-blueberry/DSS-blueberry

Lane 7-10: Control-vehicle/DSS-vehicle/Control-blueberry/DSS-blueberry

Lane 12-15: Control-vehicle/DSS-vehicle/Control-blueberry/DSS-blueberry



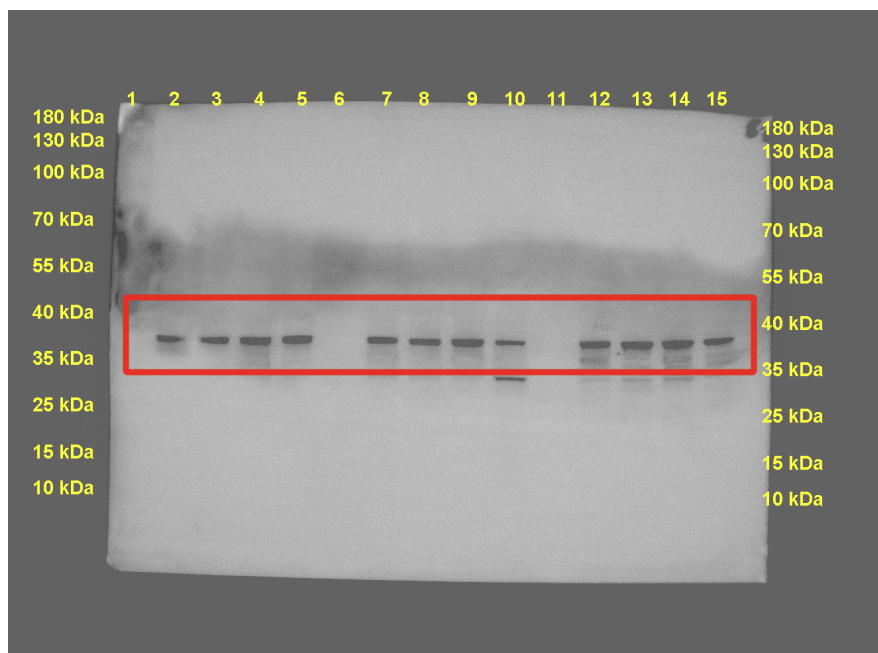
Same membrane, internal reference, GAPDH, 38 kDa

Sample loading order:

Lane 2-5: Control-vehicle/DSS-vehicle/Control-blueberry/DSS-blueberry

Lane 7-10: Control-vehicle/DSS-vehicle/Control-blueberry/DSS-blueberry

Lane 12-15: Control-vehicle/DSS-vehicle/Control-blueberry/DSS-blueberry



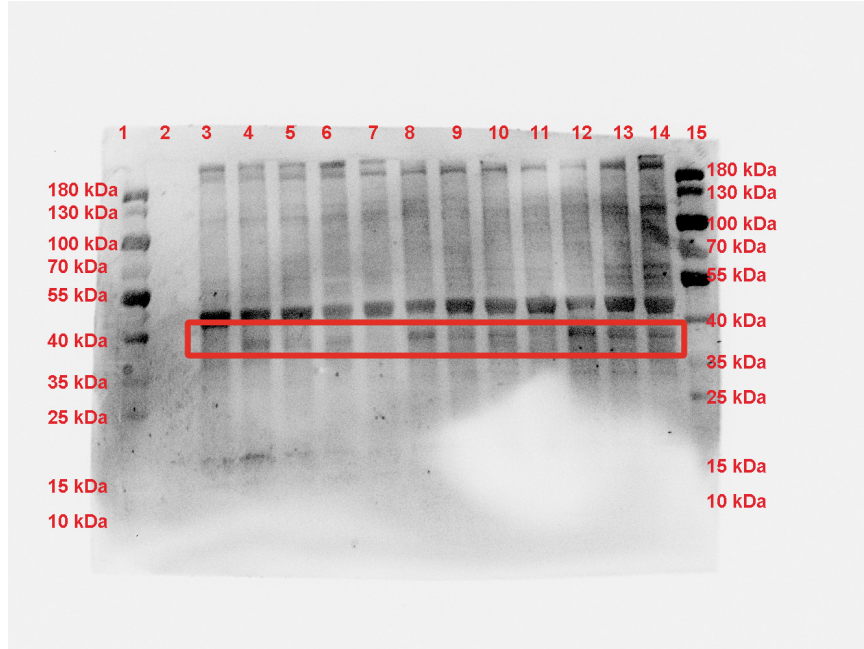
p-eIF2 α , 36 kDa

Sample loading order:

Lane 3-6: Control-vehicle/DSS-vehicle/Control-blueberry/DSS-blueberry

Lane 7-10: Control-vehicle/DSS-vehicle/Control-blueberry/DSS-blueberry

Lane 11-14: Control-vehicle/DSS-vehicle/Control-blueberry/DSS-blueberry



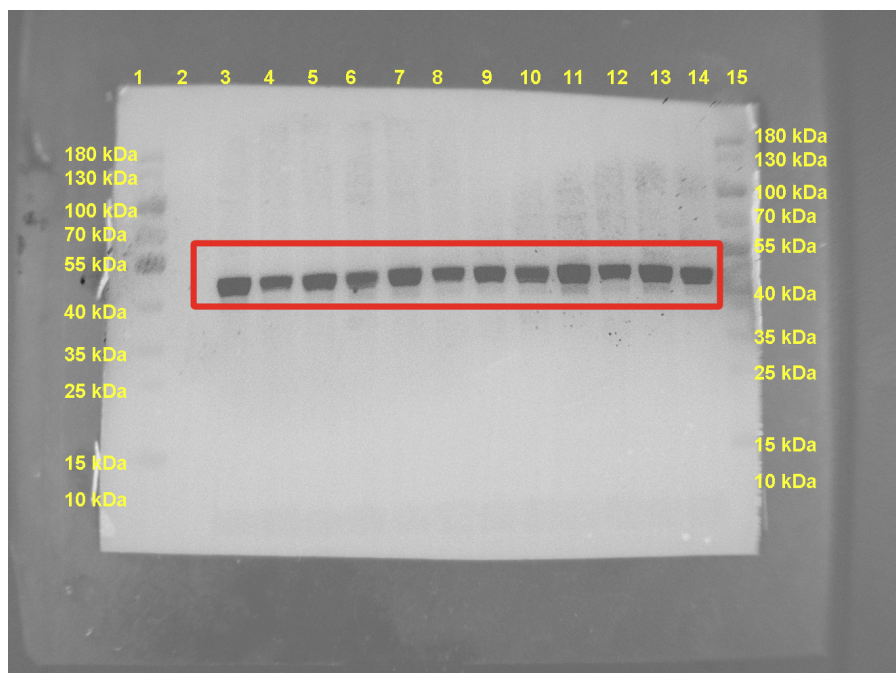
Same membrane, internal reference, beta-actin, 42 kDa

Sample loading order:

Lane 3-6: Control-vehicle/DSS-vehicle/Control-blueberry/DSS-blueberry

Lane 7-10: Control-vehicle/DSS-vehicle/Control-blueberry/DSS-blueberry

Lane 11-14: Control-vehicle/DSS-vehicle/Control-blueberry/DSS-blueberry



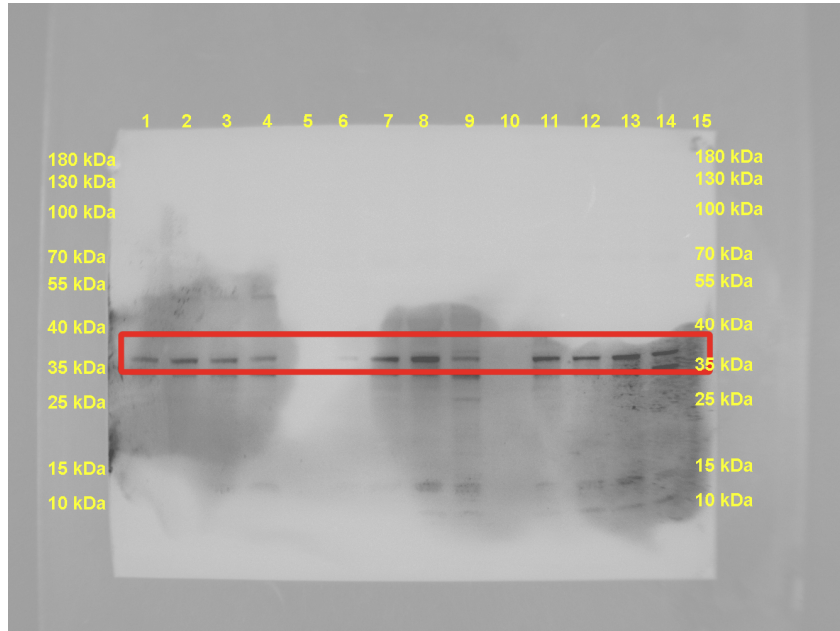
eIF2 α , 36 kDa

Sample loading order:

Lane 1-4: Control-vehicle/DSS-vehicle/Control-blueberry/DSS-blueberry

Lane 6-9: Control-vehicle/DSS-vehicle/Control-blueberry/DSS-blueberry

Lane 11-14: Control-vehicle/DSS-vehicle/Control-blueberry/DSS-blueberry



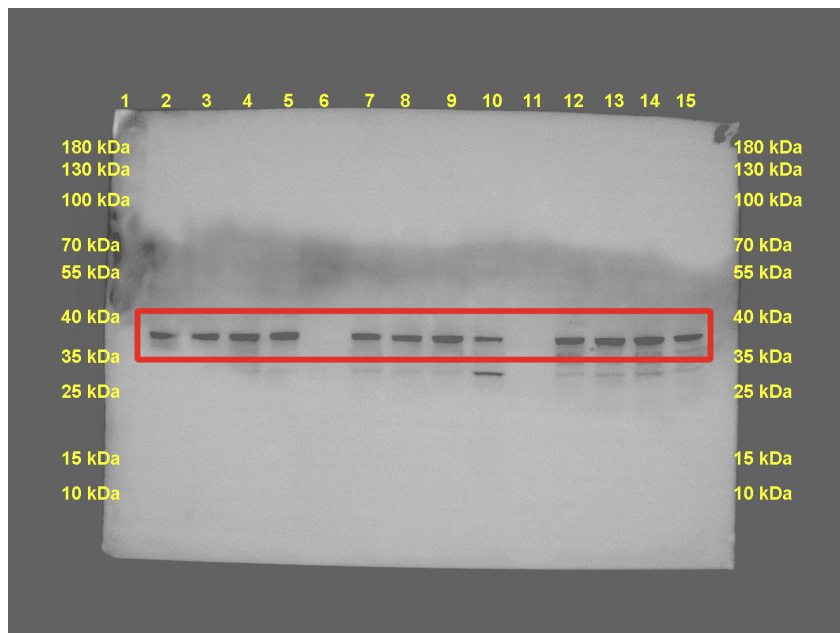
Same membrane, internal reference, GAPDH, 38 kDa

Sample loading order:

Lane 1-4: Control-vehicle/DSS-vehicle/Control-blueberry/DSS-blueberry

Lane 6-9: Control-vehicle/DSS-vehicle/Control-blueberry/DSS-blueberry

Lane 11-14: Control-vehicle/DSS-vehicle/Control-blueberry/DSS-blueberry



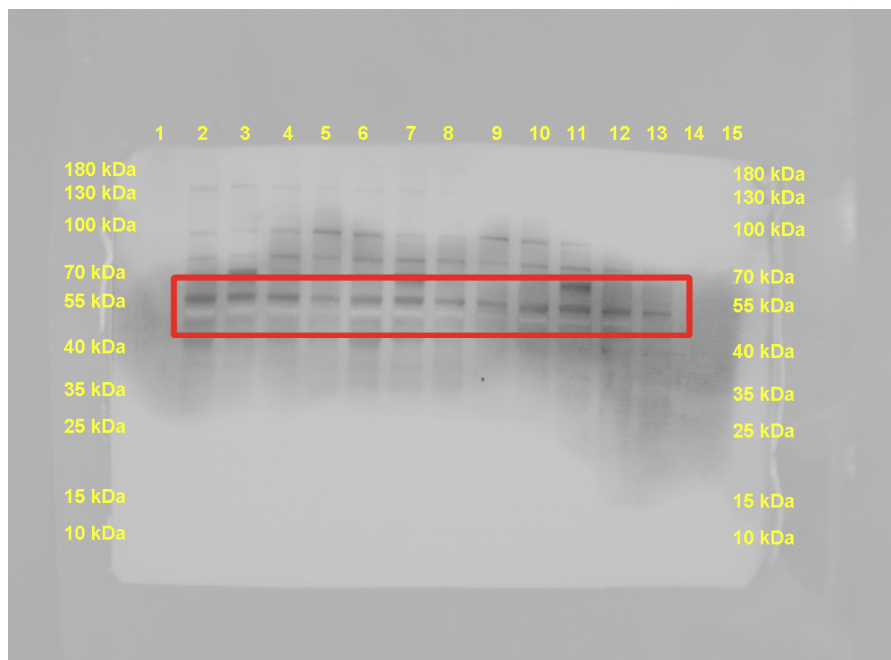
ATF4, 50 kDa

Sample loading order:

Lane 2-5: Control-vehicle/DSS-vehicle/Control-blueberry/DSS-blueberry

Lane 6-9: Control-vehicle/DSS-vehicle/Control-blueberry/DSS-blueberry

Lane 10-13: Control-vehicle/DSS-vehicle/Control-blueberry/DSS-blueberry



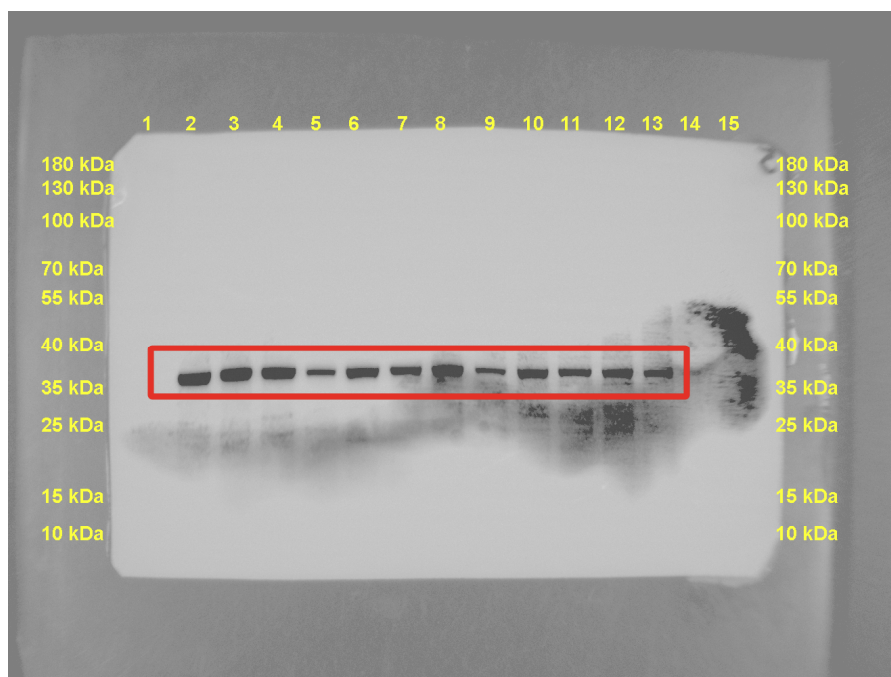
Same membrane, internal reference, GAPDH, 38 kDa

Sample loading order:

Lane 2-5: Control-vehicle/DSS-vehicle/Control-blueberry/DSS-blueberry

Lane 6-9: Control-vehicle/DSS-vehicle/Control-blueberry/DSS-blueberry

Lane 10-13: Control-vehicle/DSS-vehicle/Control-blueberry/DSS-blueberry



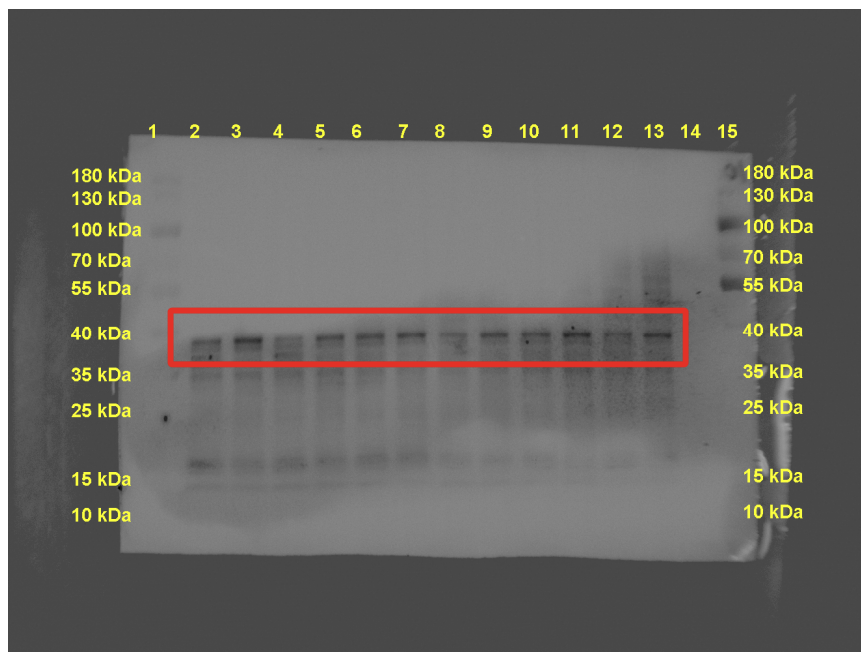
CHOP, 37 kDa

Sample loading order:

Lane 2-5: Control-vehicle/DSS-vehicle/Control-blueberry/DSS-blueberry

Lane 6-9: Control-vehicle/DSS-vehicle/Control-blueberry/DSS-blueberry

Lane 10-13: Control-vehicle/DSS-vehicle/Control-blueberry/DSS-blueberry



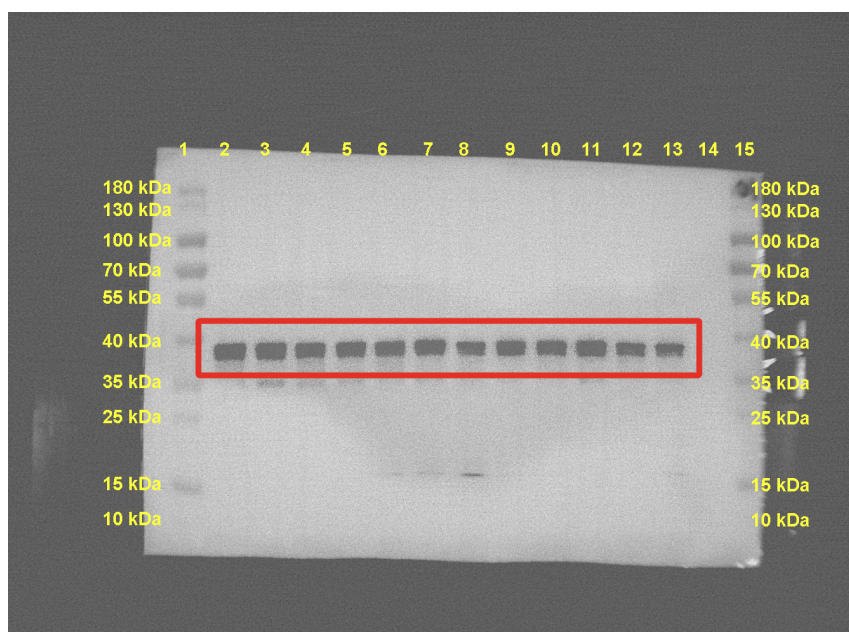
Same membrane, internal reference, GAPDH, 38 kDa

Sample loading order:

Lane 2-5: Control-vehicle/DSS-vehicle/Control-blueberry/DSS-blueberry

Lane 6-9: Control-vehicle/DSS-vehicle/Control-blueberry/DSS-blueberry

Lane 10-13: Control-vehicle/DSS-vehicle/Control-blueberry/DSS-blueberry



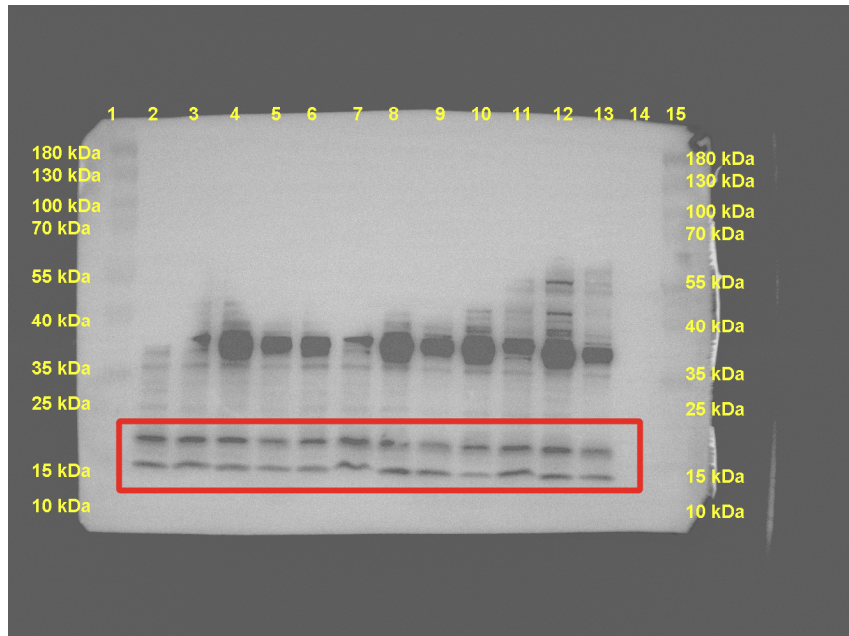
Caspase-3, 17,19 kDa

Sample loading order:

Lane 2-5: Control-vehicle/DSS-vehicle/Control-blueberry/DSS-blueberry

Lane 6-9: Control-vehicle/DSS-vehicle/Control-blueberry/DSS-blueberry

Lane 10-13: Control-vehicle/DSS-vehicle/Control-blueberry/DSS-blueberry



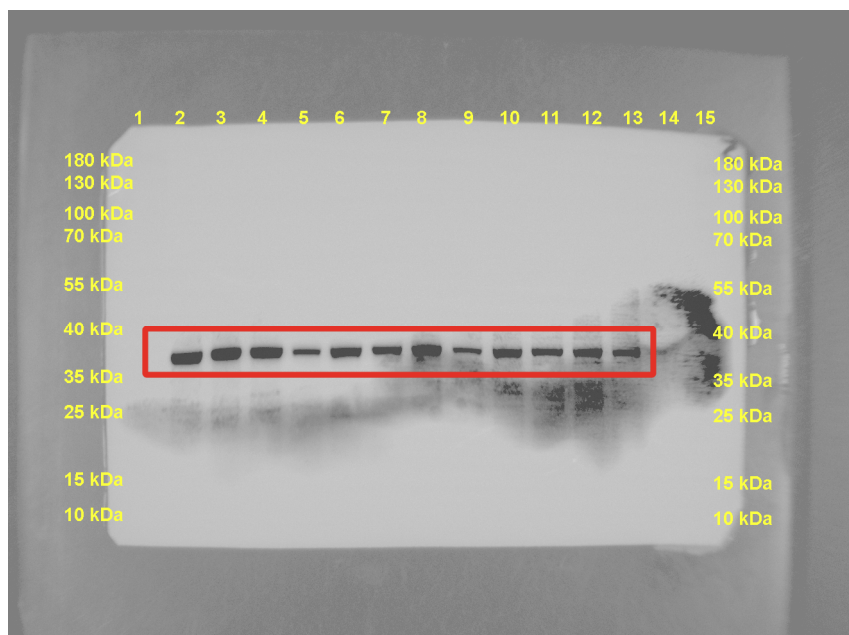
Same membrane, internal reference, GAPDH, 38 kDa

Sample loading order:

Lane 2-5: Control-vehicle/DSS-vehicle/Control-blueberry/DSS-blueberry

Lane 6-9: Control-vehicle/DSS-vehicle/Control-blueberry/DSS-blueberry

Lane 10-13: Control-vehicle/DSS-vehicle/Control-blueberry/DSS-blueberry



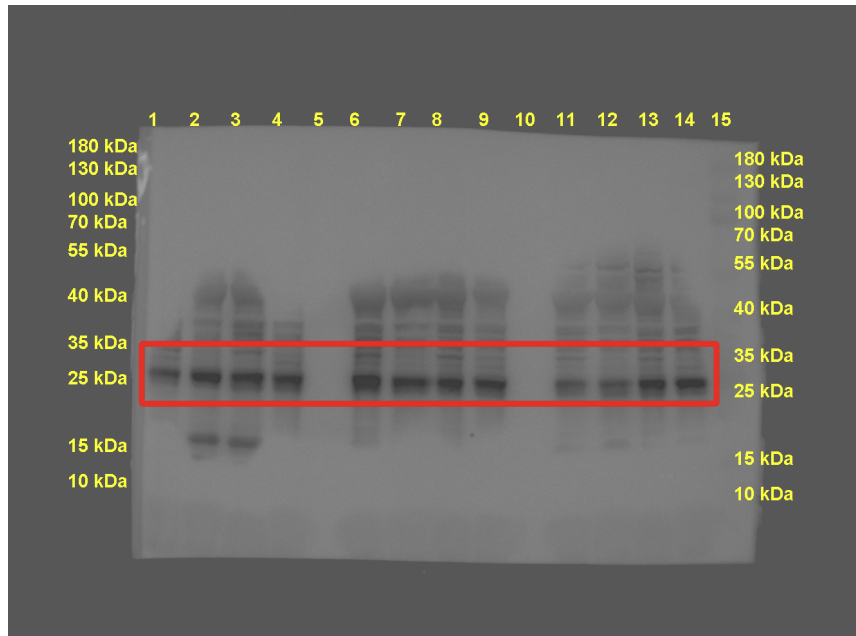
Bcl-2, 26 kDa

Sample loading order:

Lane 1-4: Control-vehicle/DSS-vehicle/Control-blueberry/DSS-blueberry

Lane 6-9: Control-vehicle/DSS-vehicle/Control-blueberry/DSS-blueberry

Lane 11-14: Control-vehicle/DSS-vehicle/Control-blueberry/DSS-blueberry



Same membrane, internal reference, GAPDH, 38 kDa

Sample loading order:

Lane 1-4: Control-vehicle/DSS-vehicle/Control-blueberry/DSS-blueberry

Lane 6-9: Control-vehicle/DSS-vehicle/Control-blueberry/DSS-blueberry

Lane 11-14: Control-vehicle/DSS-vehicle/Control-blueberry/DSS-blueberry



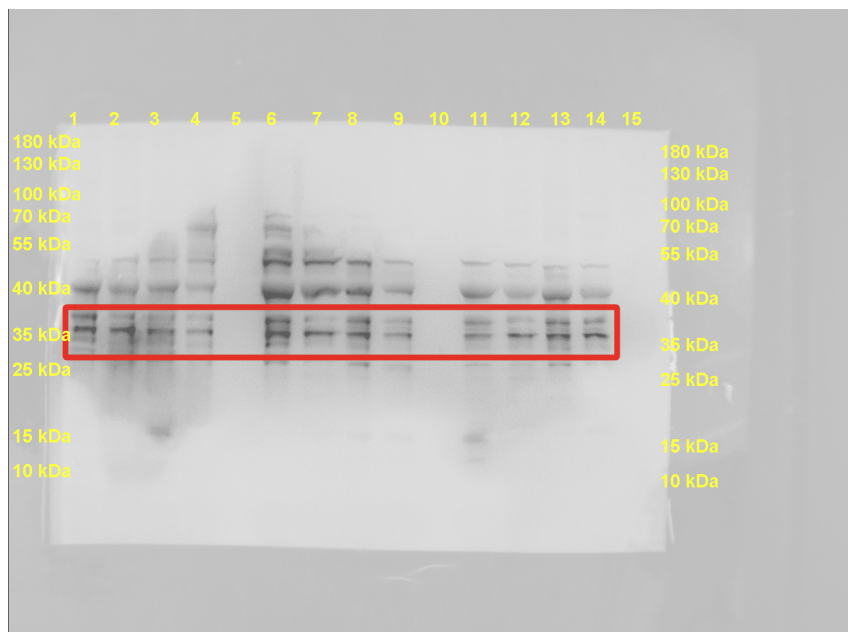
Bcl-xl, 36 kDa

Sample loading order:

Lane 1-4: Control-vehicle/DSS-vehicle/Control-blueberry/DSS-blueberry

Lane 6-9: Control-vehicle/DSS-vehicle/Control-blueberry/DSS-blueberry

Lane 11-14: Control-vehicle/DSS-vehicle/Control-blueberry/DSS-blueberry



Same membrane, internal reference, GAPDH, 38 kDa

Sample loading order:

Lane 1-4: Control-vehicle/DSS-vehicle/Control-blueberry/DSS-blueberry

Lane 6-9: Control-vehicle/DSS-vehicle/Control-blueberry/DSS-blueberry

Lane 11-14: Control-vehicle/DSS-vehicle/Control-blueberry/DSS-blueberry

