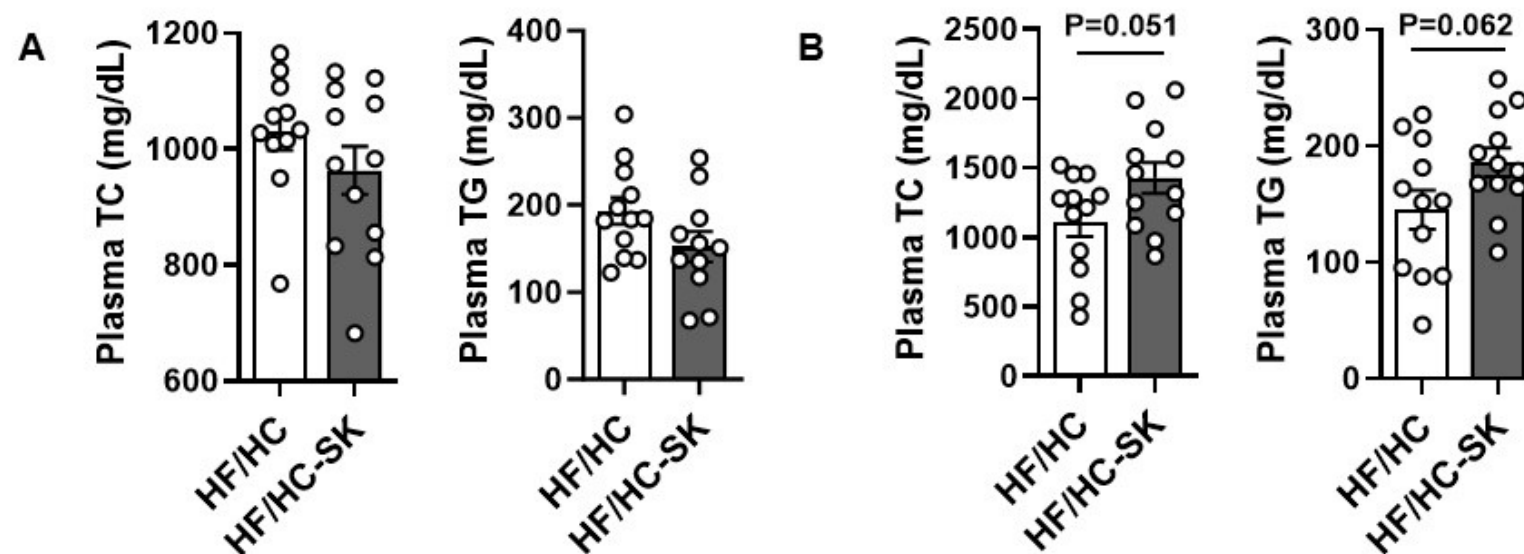


Supplemental Figure S1



Supplemental Figure S1. Dietary sugar kelp supplementation did not significantly change plasma TG and TC at 6 weeks and 12 weeks of the atherogenic diet in male *Ldlr* KO mice. Mice were fed a HF/HC-Control, or HF/HC-SK for 16 weeks. During the experimental period, plasma samples were collected at 6 weeks and 12 weeks. (A) Plasma TG and TC levels at 6 weeks. (B) Plasma TG and TC levels at 12 weeks. n=10 per group. Data shown are mean \pm SEM. * indicating a significant difference between HF/HC-Control and HF/HC-SK from the unpaired t-test ($P<0.05$). The P-value between the two groups by unpaired t-test is shown.