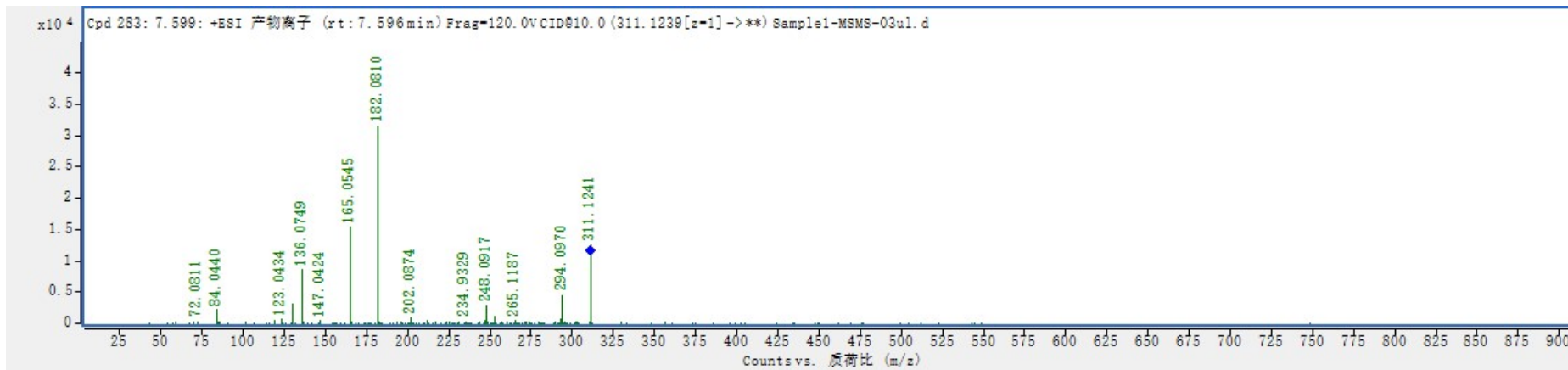
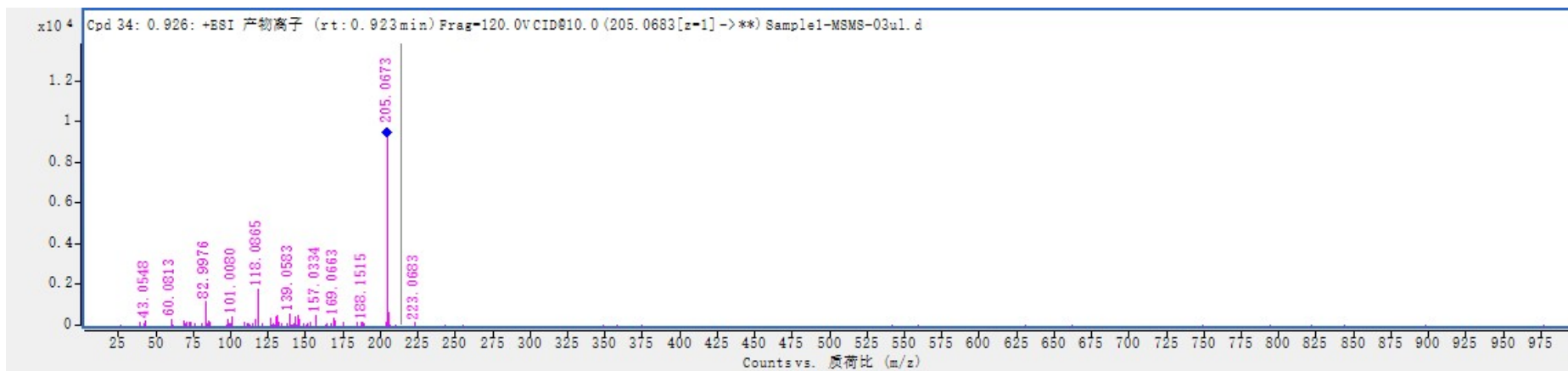


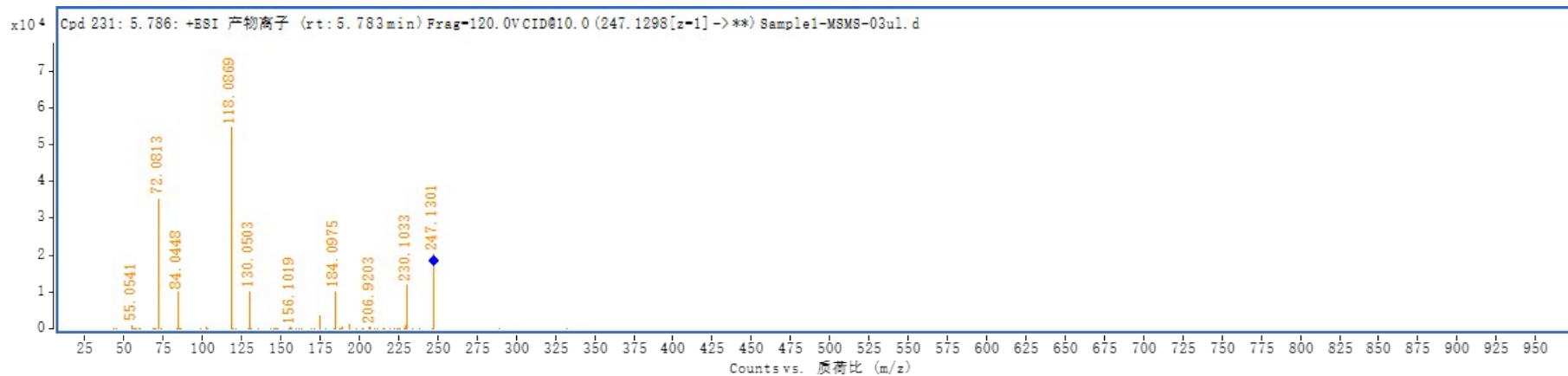
A



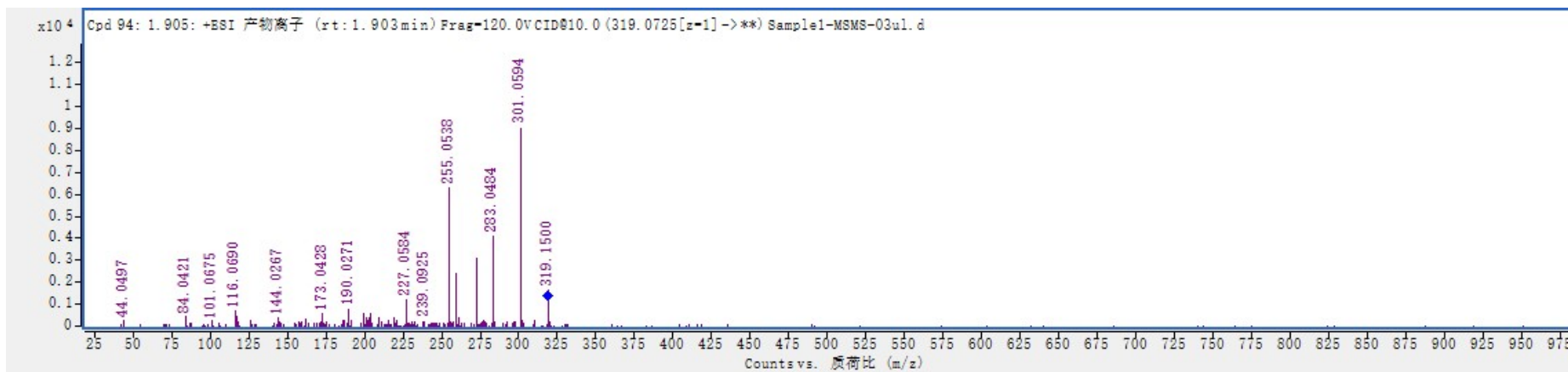
B



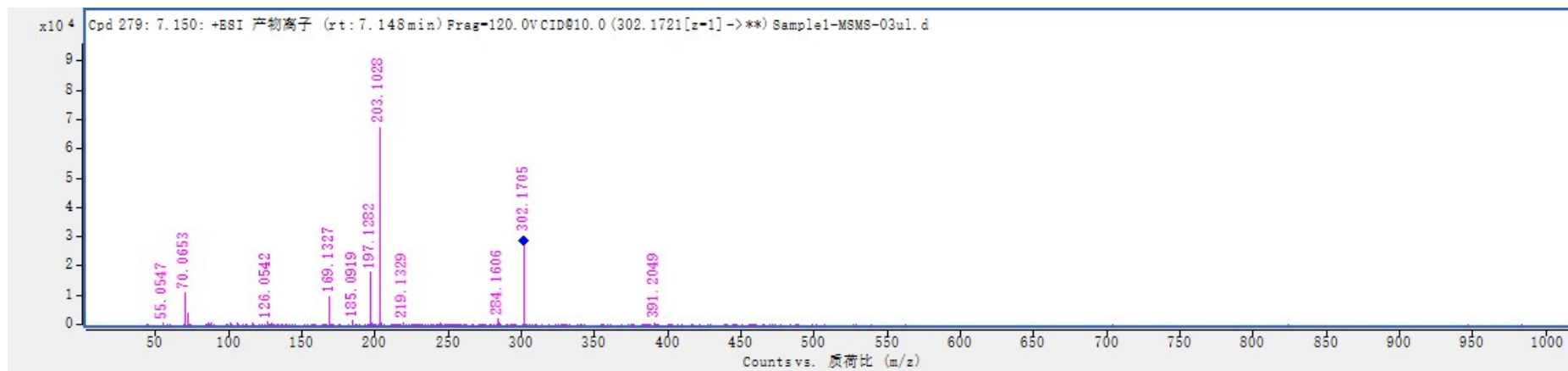
C



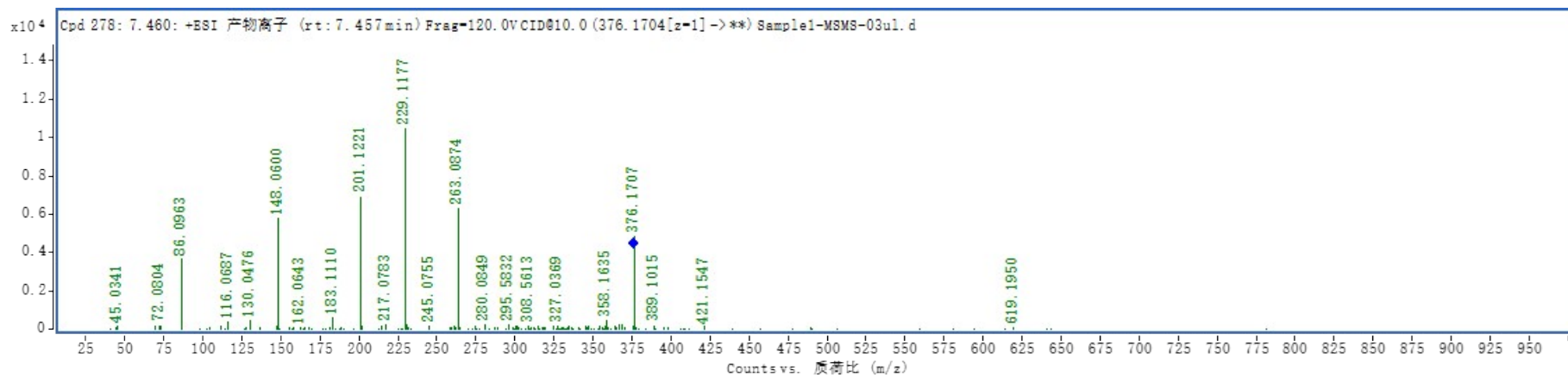
D



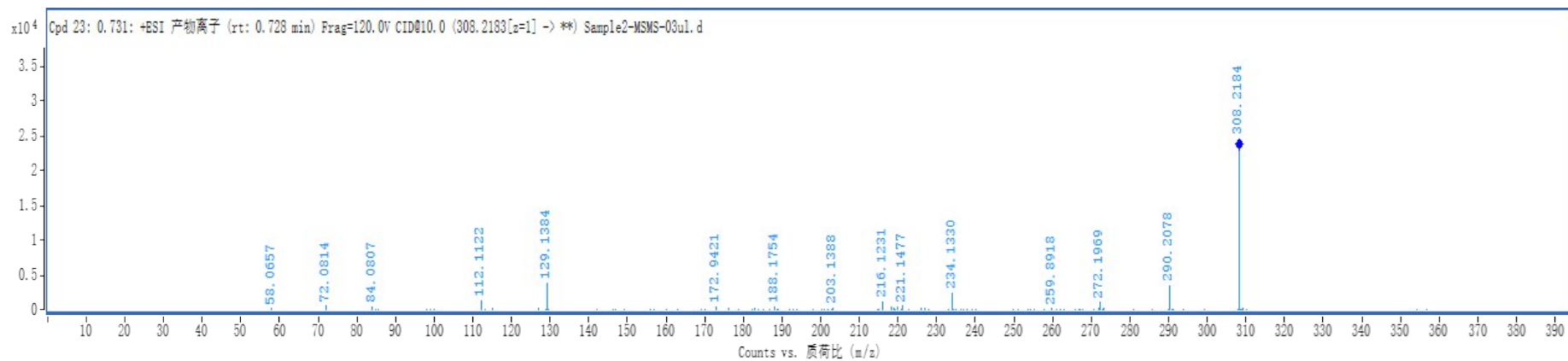
E



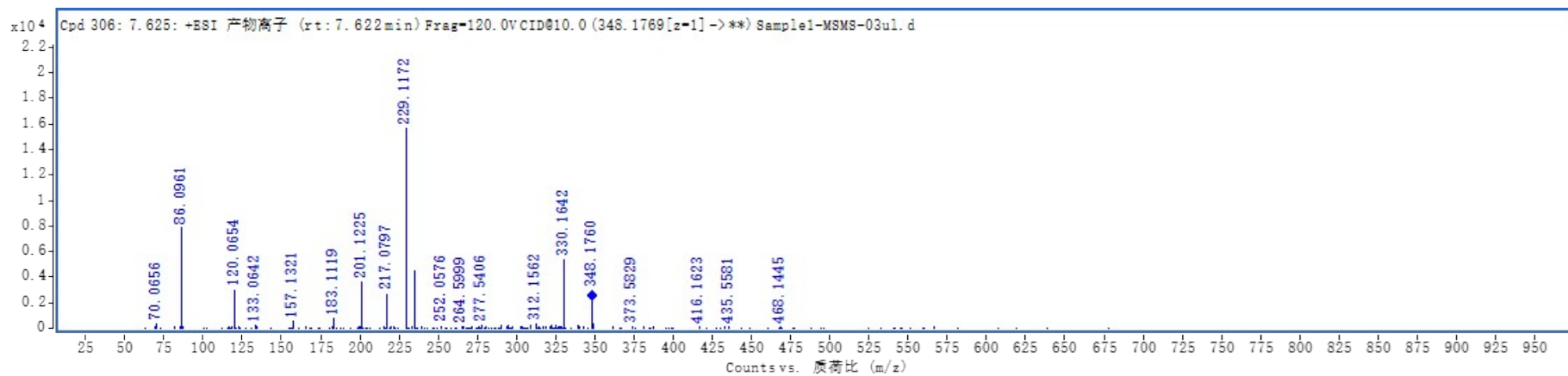
F



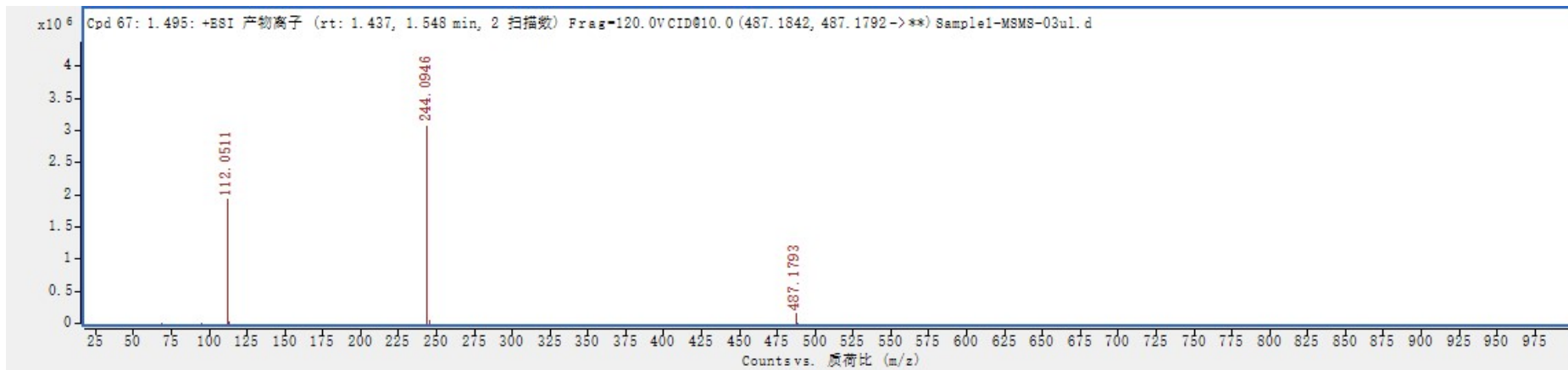
G



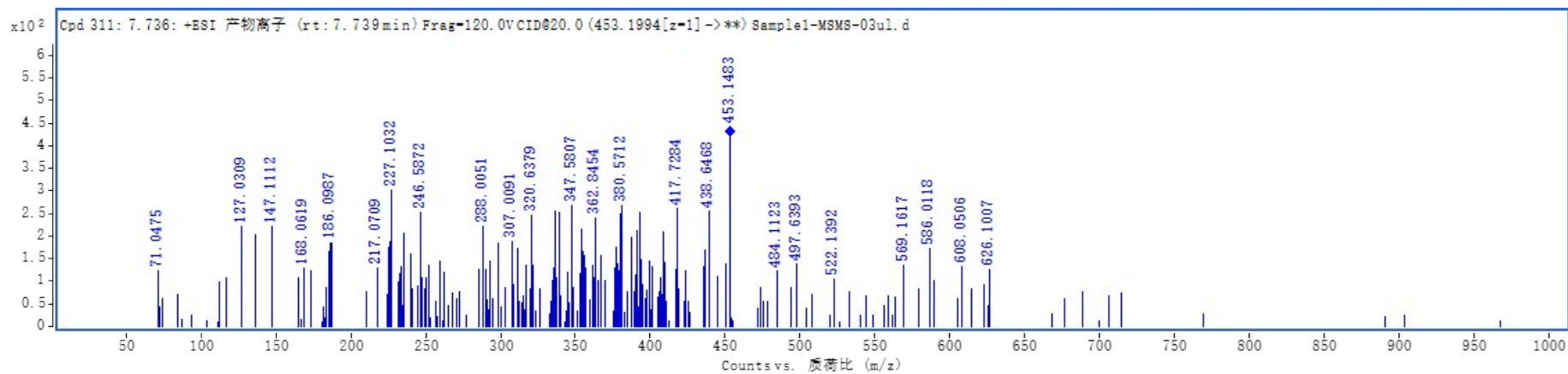
H



I



J



K

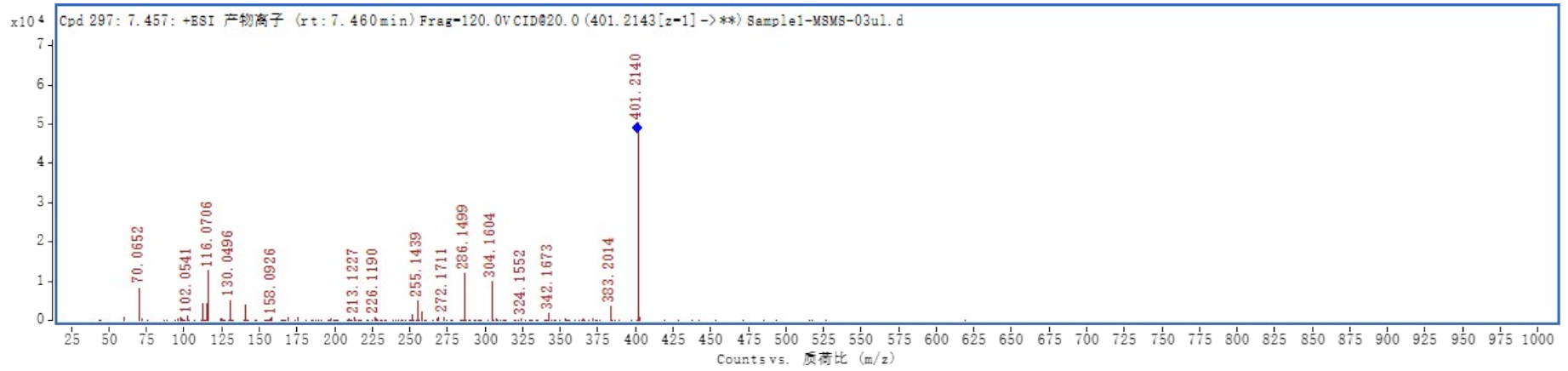


Figure S1. Tandem mass spectra of UPLC-ESI-Q-TOF MS. Peptides are (A) EY, (B) EG, (C) EV, (D) ENG, (E) PEG, (F) DEL, (G) ECG, (H) DDL, (I) PPEL, (J) EDCS and (K) DGPL