

Supplementary document

Table S1 Effects of APs on body weight and food take in mice

	CT	HF	CT-AP	HF-AP
Initial body weight (g)	16.62 ± 1.37	15.46 ± 0.96	15.80 ± 0.86	16.61 ± 1.26
Final body weight (g)	32.83 ± 2.91	36.50 ± 2.02 **	32.35 ± 2.34 ##	34.40 ± 1.44 #
Body weight gain (g)	16.21 ± 2.96	21.04 ± 2.59 ***	16.55 ± 2.00 ##	17.79 ± 1.69 #
Food intake (g/day)	3.11 ± 0.16	2.95 ± 0.22	3.15 ± 0.18	3.01 ± 0.18

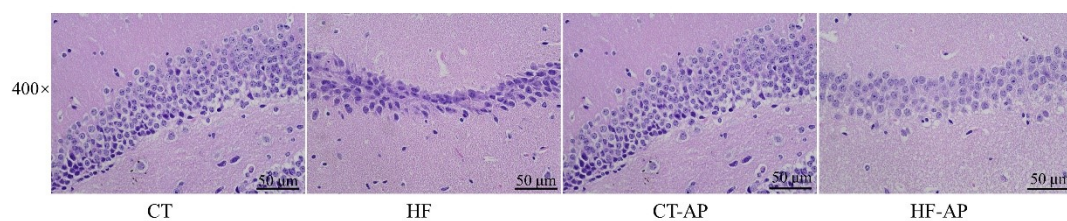


Figure S1 Effects of APs on the pathology in the brain tissues.