

SUPPORTING INFORMATION:

**Quinoa bran polyphenol extract attenuates high-fat diet induced
non-alcoholic fatty liver disease in mice**

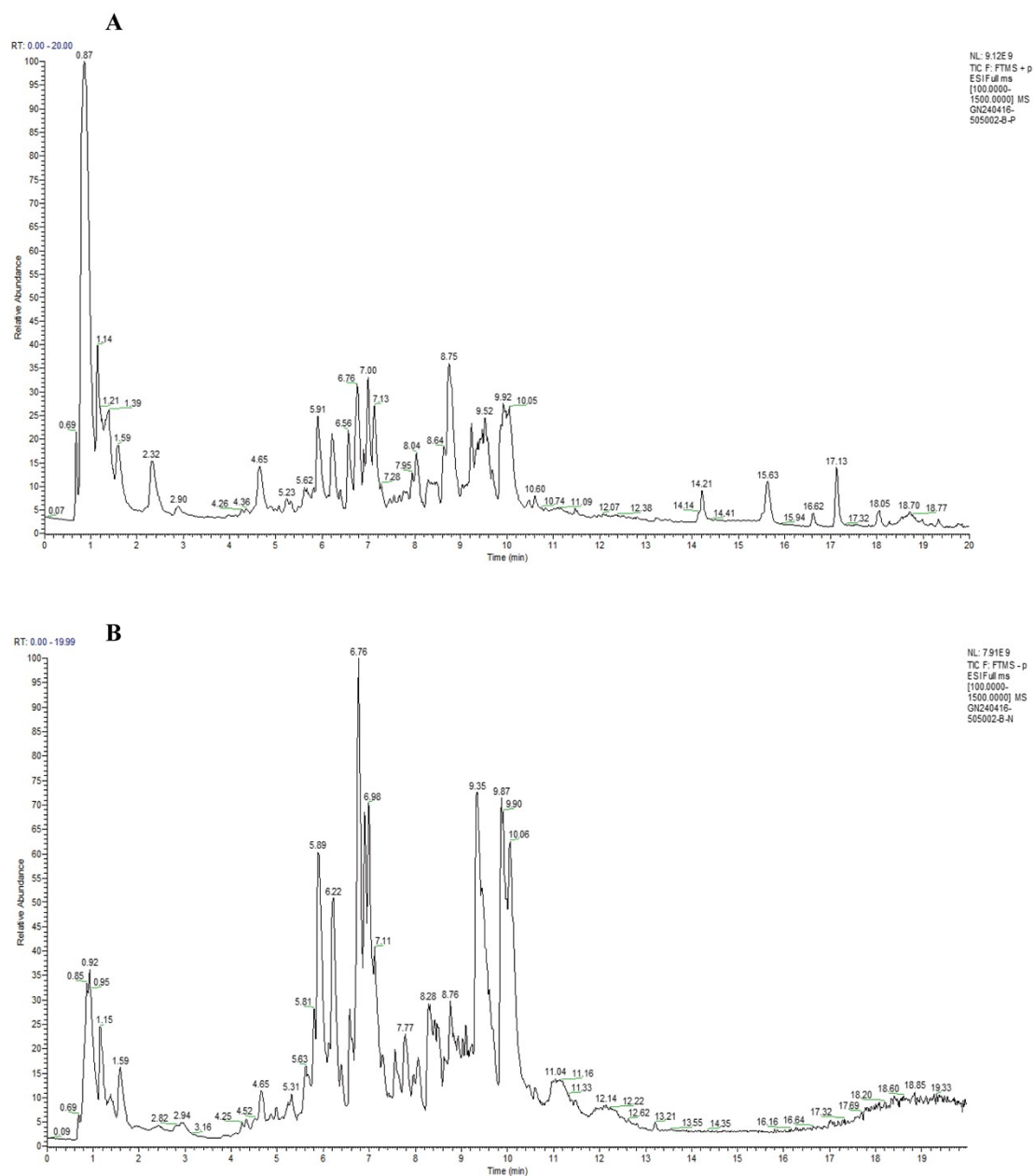


Fig. S1 QBP total ion current (TIC) diagram. (A) positive ion, (B) negative ion.

Table S1 D12492 Ingredient list.

Product #	D12492	
	gm%	kcal%
Protein	26.2	20
Carbohydrate	26.3	20
Fat	34.9	60
Ingredient	gm	kcal
Casein, 80 Mesh	200	800
L-Cystine	3	12
Corn Starch	0	0
Maltodextrin 10	125	500
Sucrose	68.8	275.2
Cellulose, BW200	50	0
Soybean Oil	25	225
Lard*	245	2205
Mineral Mix, S10026	10	0
DiCalcium Phosphate	13	0
Calcium Carbonate	5.5	0
Potassium Citrate, 1 H ₂ O	16.5	0
Vitamin Mix, V10001	10	40
Choline Bitartrate	2	0
FD&C Blue Dye #1	0.05	0
Total	773.85	4057

Table S2 Food intake of different groups of mice.

Weeks	C	C-H	HF	QBP-L	QBP-H
Food intake (g/mouse/day)					
1	2.82±0.20	2.71±0.05	3.00±0.09	3.07±0.14	2.69±0.17
2	3.14±0.21	2.70±0.11	2.87±0.10	2.88±0.09	2.68±0.33
3	2.96±0.02	2.63±0.15	3.11±0.40	2.98±0.43	2.66±0.22
4	3.15±0.06	2.77±0.04	3.02±0.34	2.95±0.46	2.76±0.18
5	3.13±0.01	3.04±0.05	2.99±0.07	2.96±0.44	2.81±0.07
6	3.04±0.12	2.76±0.00	3.05±0.15	3.00±0.42	2.65±0.01
7	3.12±0.02	2.90±0.11	3.19±0.00	3.07±0.48	2.86±0.09
8	2.80±0.39	2.80±0.10	2.89±0.16	2.92±0.08	2.87±0.15
9	2.88±0.20	2.68±0.05	2.90±0.09	3.01±0.18	2.64±0.06
10	3.00±0.37	2.65±0.03	3.05±0.15	2.98±0.23	2.88±0.11