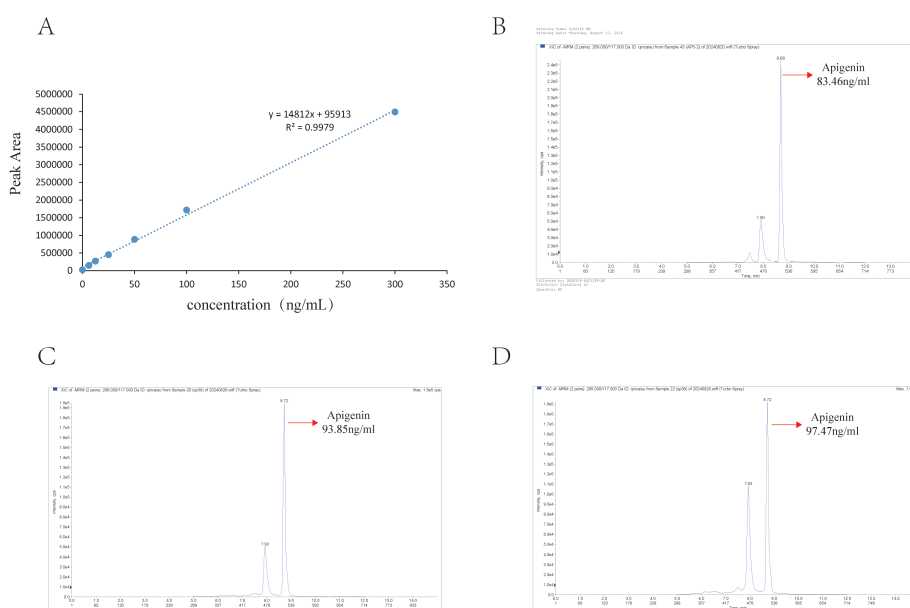


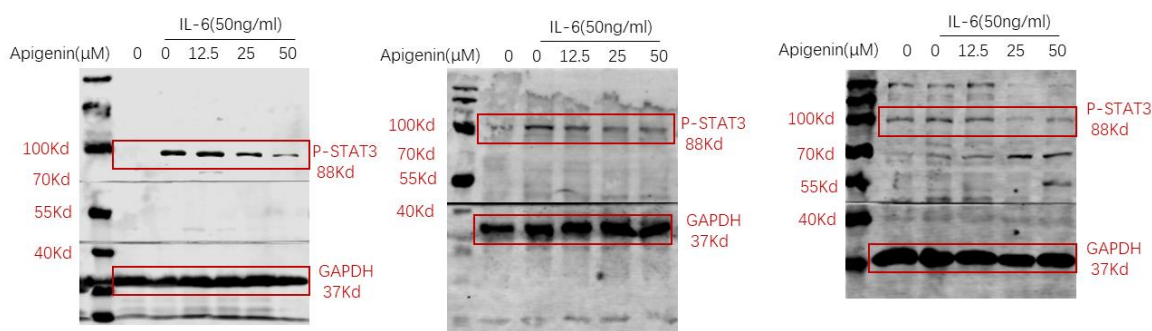
## Supplementary data 1

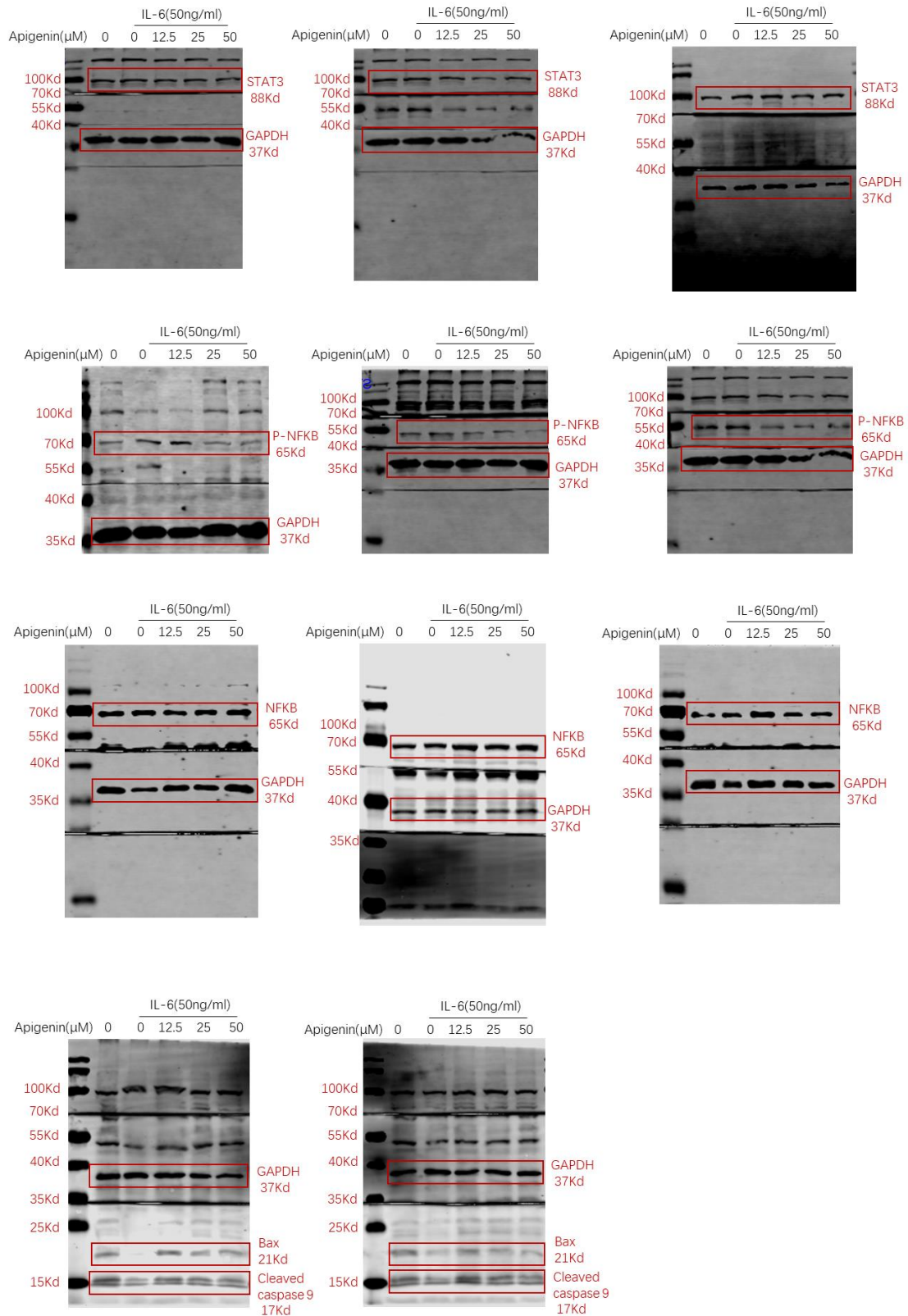


Supplementary Figure 1. (A) A regression analysis was performed with the concentration of the standard solution as the x-axis (X) and the peak area as the y-axis (Y). The regression equation was found to be ( $y = 14812x + 95913$ ) with an ( $R^2$ ) value of 0.9979, indicating a good linear relationship for apigenin in the range of 6.25 to 300.00 ng/ml. (B-D) Chromatogram and concentration of drug containing serum sample solution.

## Supplementary data 2

### Western Blot Original Image





Anti-Bax antibody and anti-cleaved caspase 9 antibody were incubated on the same membrane overnight and then incubated with the secondary antibody for 2 hours.