

## SUPPORTING INFOEMATION

Human breast milk-derived phospholipid DOPE ameliorates intestinal injury associated with NEC by inhibiting ferroptosis

Yanjie Chen<sup>a#</sup>, Wenjuan Chen<sup>a#</sup>, Yu Dai<sup>a#</sup>, Xiangyun Yan<sup>a</sup>, Chengyao Jiang<sup>a</sup>, Fan Zhang<sup>a</sup>, Min Zhang<sup>a</sup>, Xiaoshan Hu<sup>a</sup>, Juyi Zhao<sup>a</sup>, Tingyue Wu<sup>a</sup>, Shushu Li<sup>a\*</sup>, Shuping Han<sup>a\*</sup>, xiaohui Chen<sup>a\*</sup>

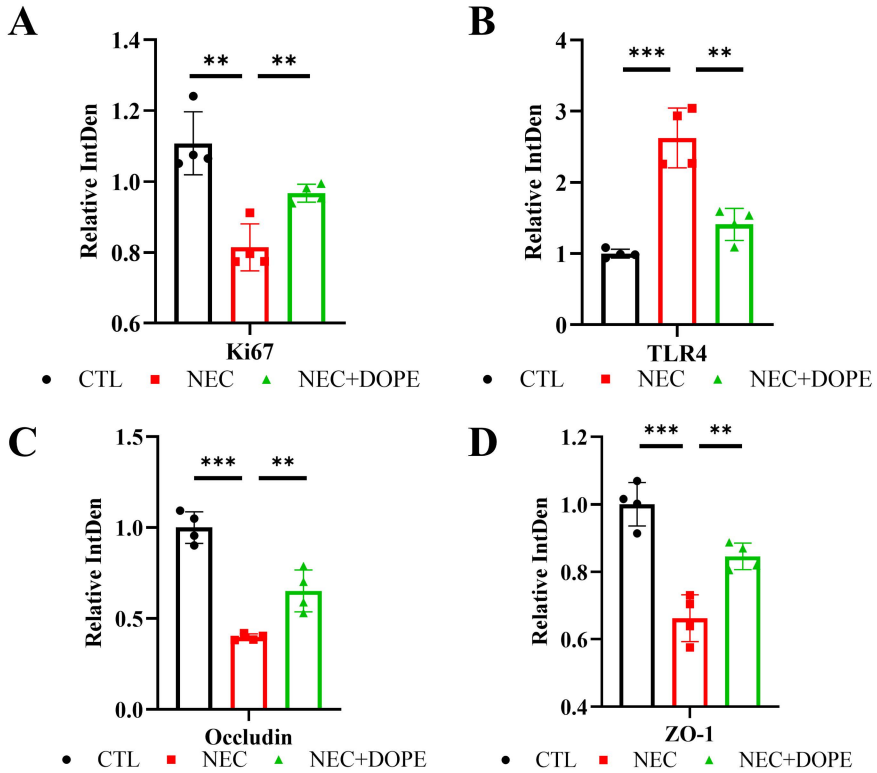
<sup>a</sup> Department of Pediatrics, Women's Hospital of Nanjing Medical University, Nanjing Women and Children's Healthcare Hospital, Nanjing, Jiangsu, China.

<sup>#</sup> These authors contributed equally to this work

<sup>\*</sup> Corresponding authors.

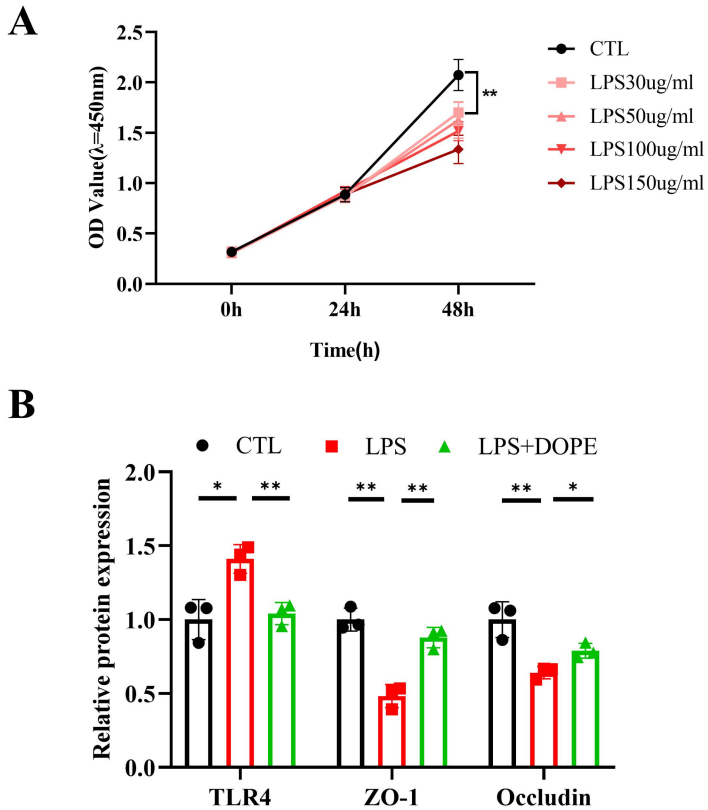
E-mail: [xiaohuichen@njmu.edu.cn](mailto:xiaohuichen@njmu.edu.cn), [shupinghan@njmu.edu.cn](mailto:shupinghan@njmu.edu.cn), [lishushu@njmu.edu.cn](mailto:lishushu@njmu.edu.cn)

# Support Information1.



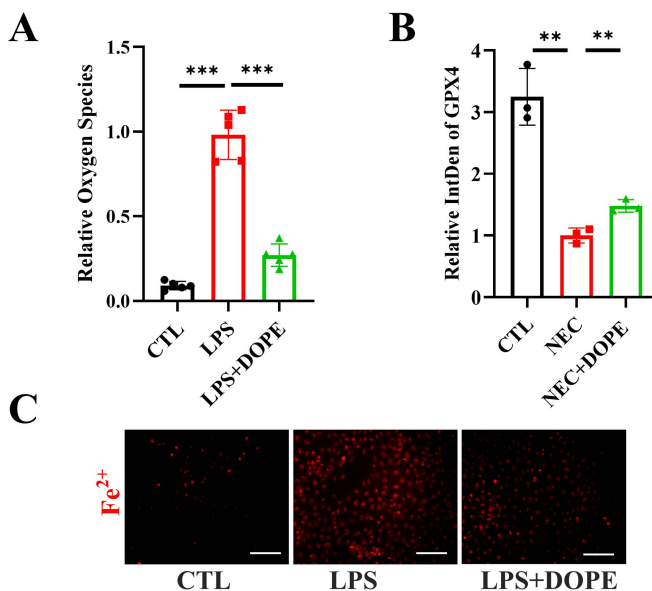
**FigS1. Immunohistochemical quantitative analysis of intestinal protein.** Quantification of Ki67 (A), TLR4 (B), Occludin (C) and ZO-1 (D) protein immunohistochemical analysis in the terminal ileum.

## Support Information2.



**FigS2. Quantitative analysis of intestinal protein.** A) The activity of IEC-6 cells was examined in the presence of LPS at various concentrations. B) Quantification analysis of Inflammatory receptor protein TLR4, and tight junction protein ZO-1, Occludin in the IEC-6.

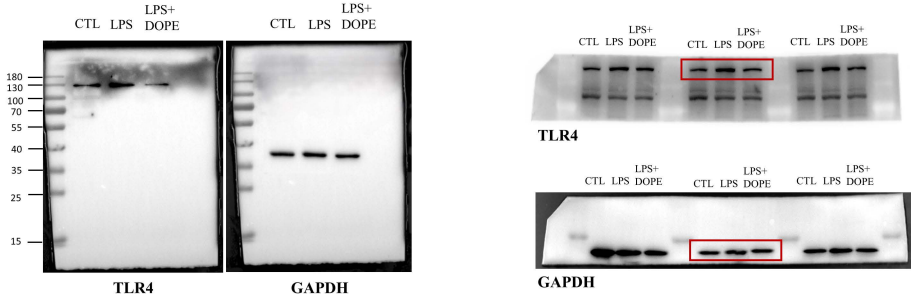
## Support Information3.



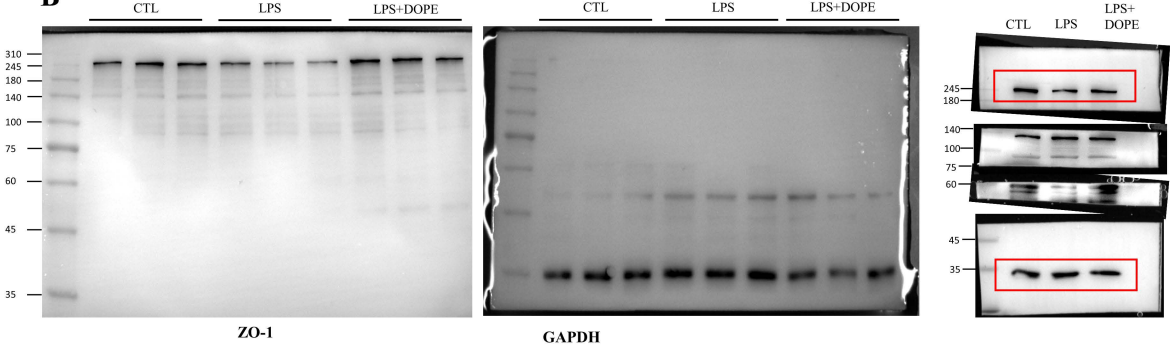
**FigS3. The functional improvement of DOPE on IEC-6 and rats models may be related to ferroptosis.** A) Quantitative analysis of ROS labeled by DCFH fluorescence. B) Quantitative analysis of intestinal tissue protein GPX4 by immunofluorescence. C) The concentration of iron ion at IEC-6 under FerroOrange fluorescence staining , Scale bar=200 $\mu$ m.

# Figure3C

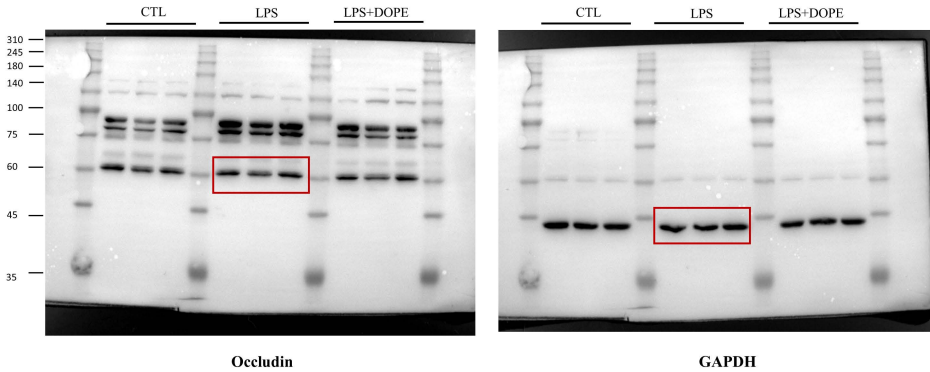
A



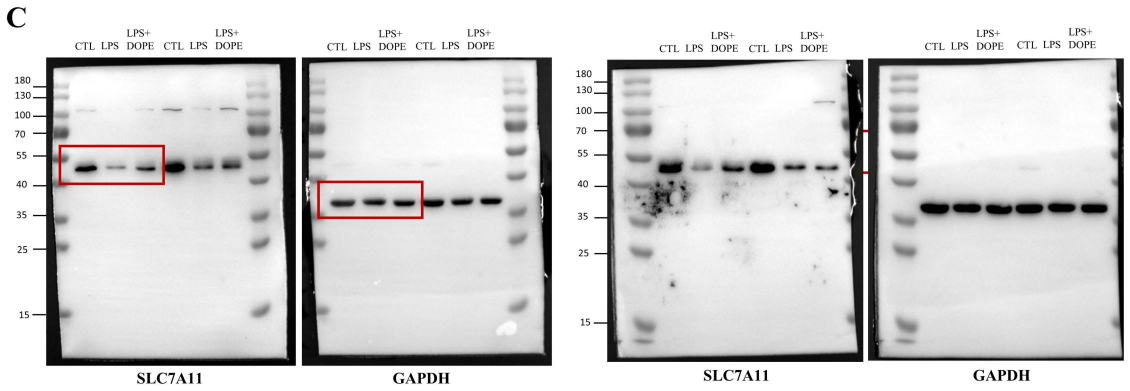
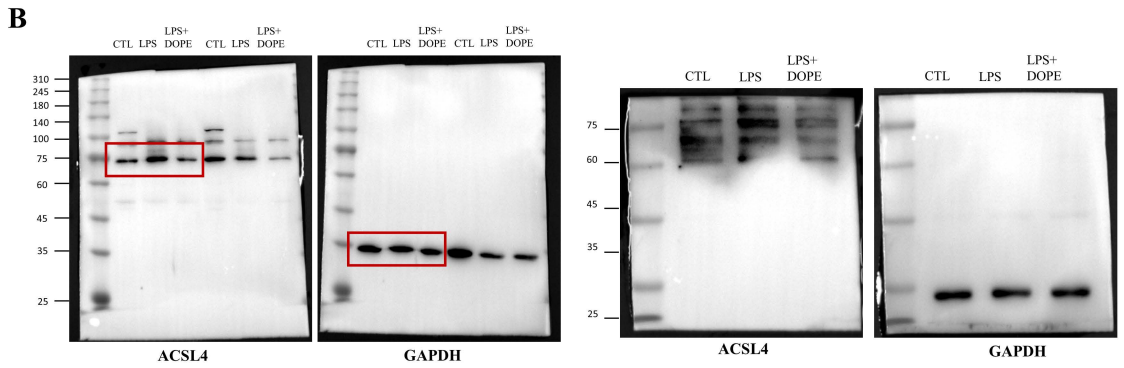
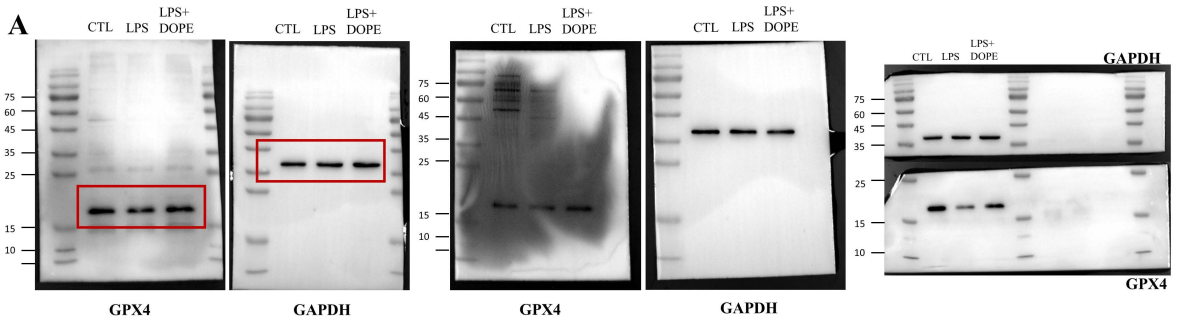
B



C

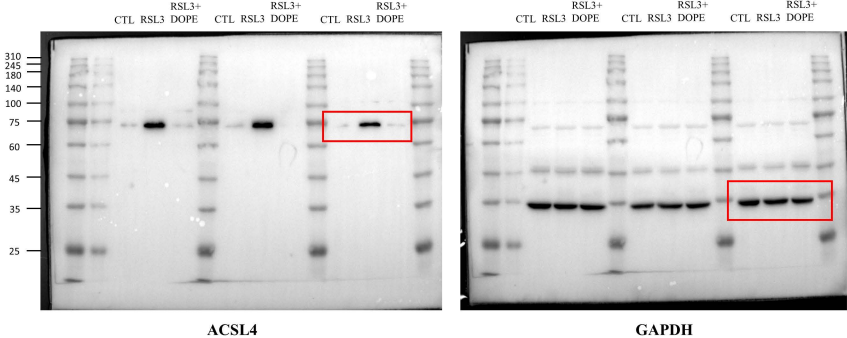


# Figure4D

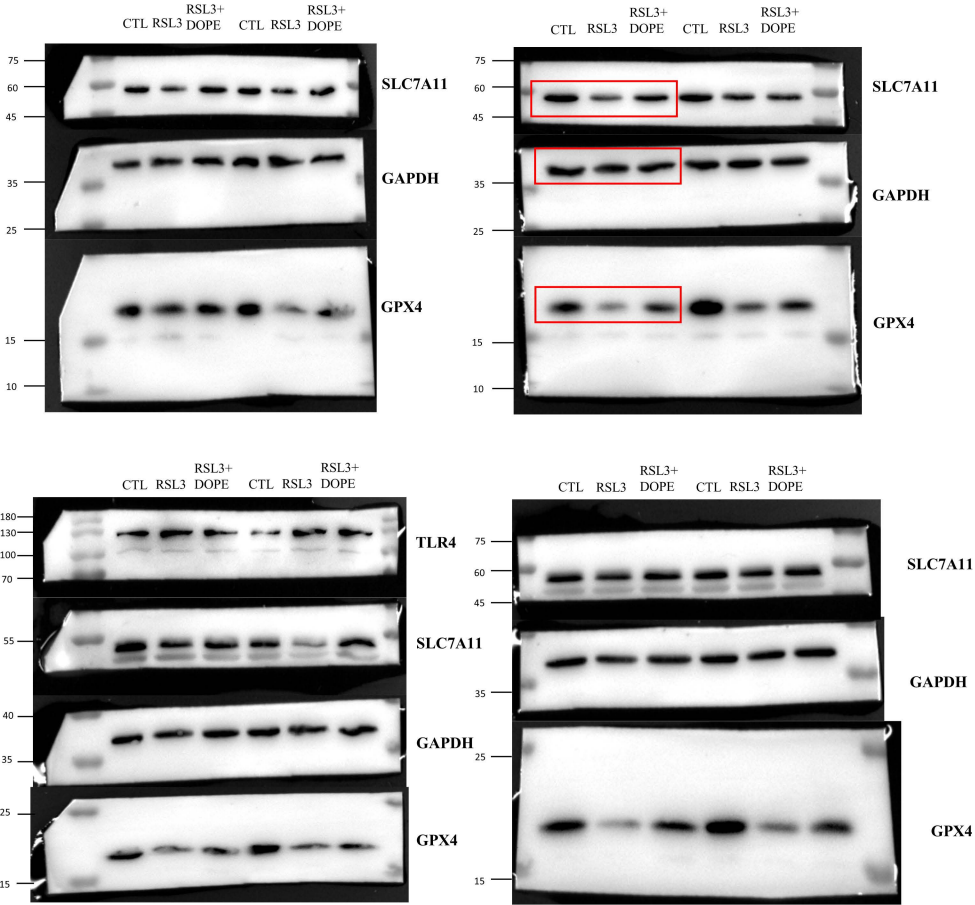


# Figure 5D

**A**

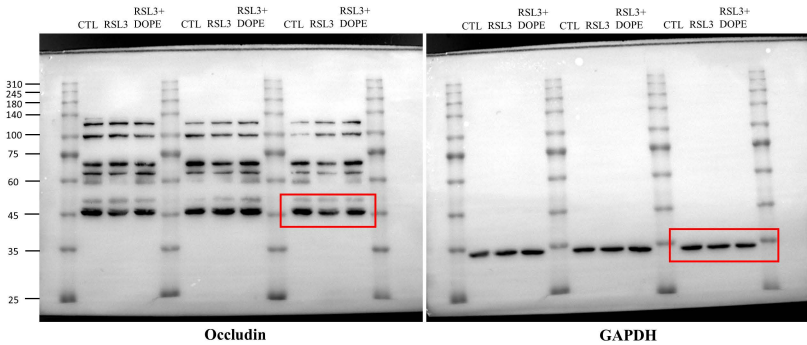


**B**



# Figure6C

**A**



**B**

