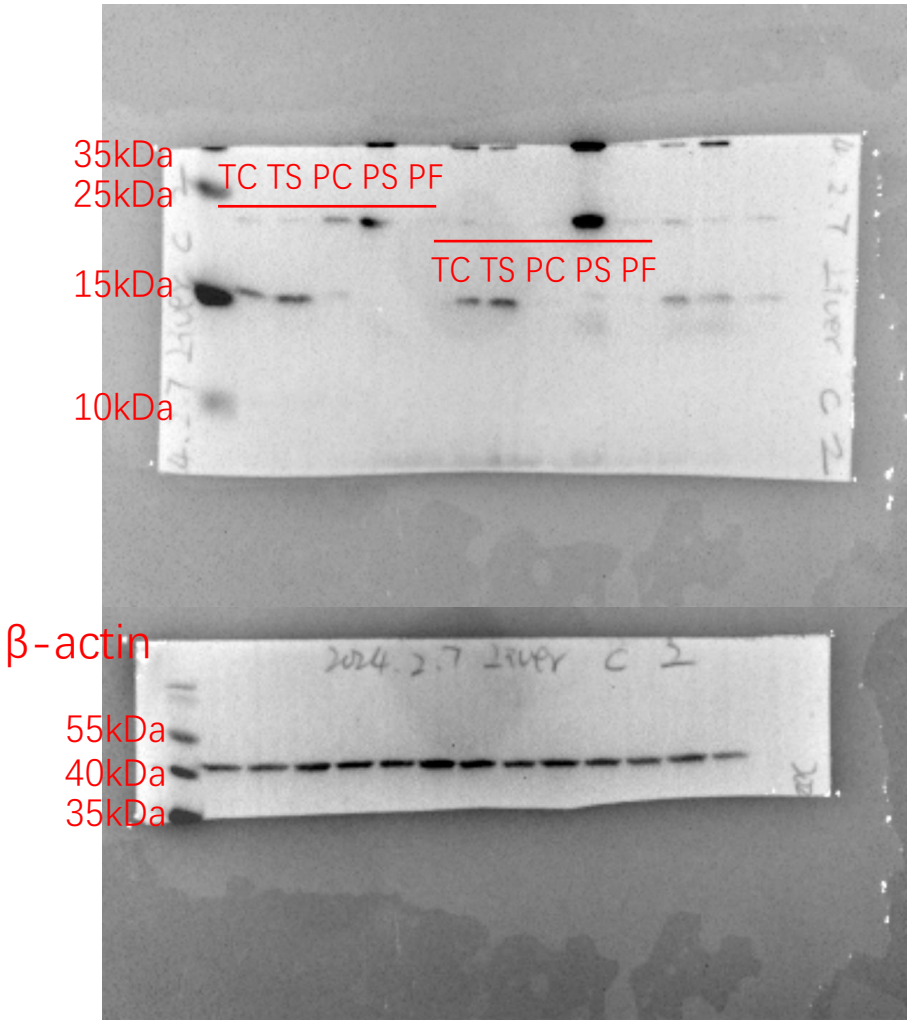
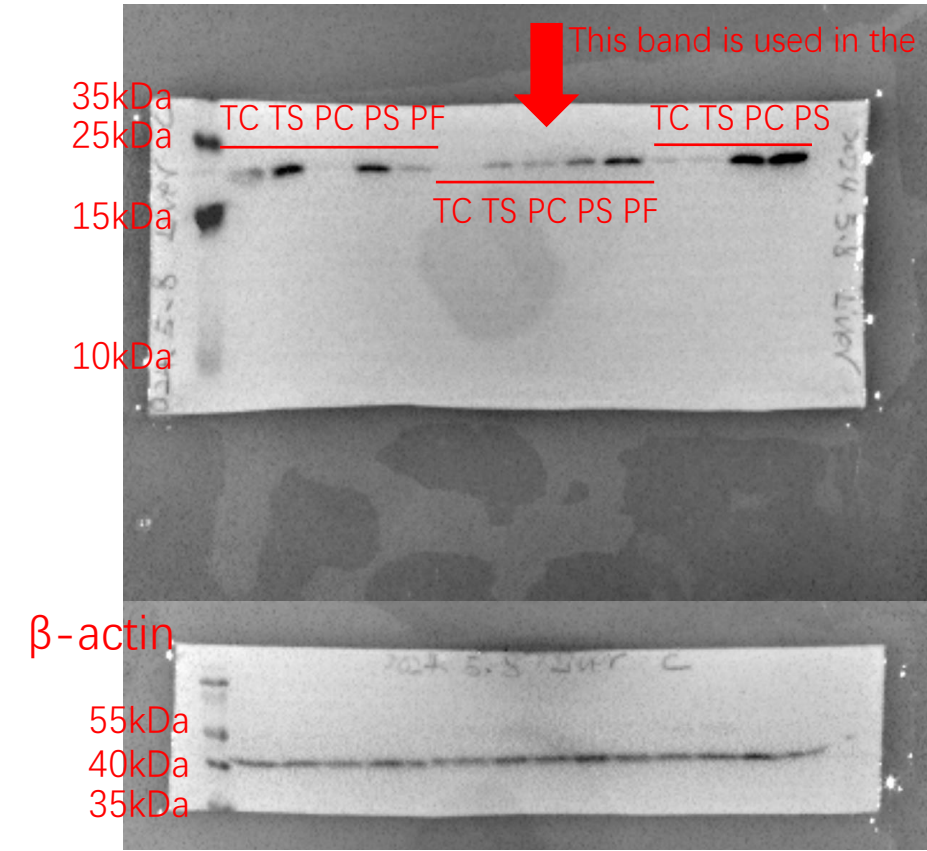


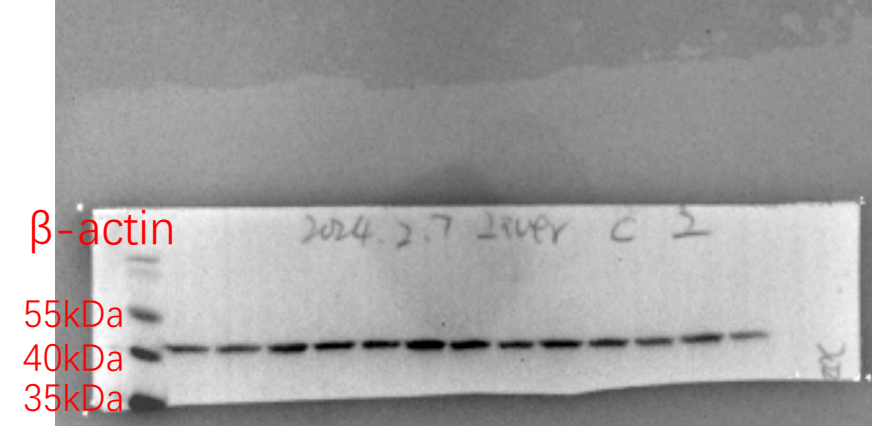
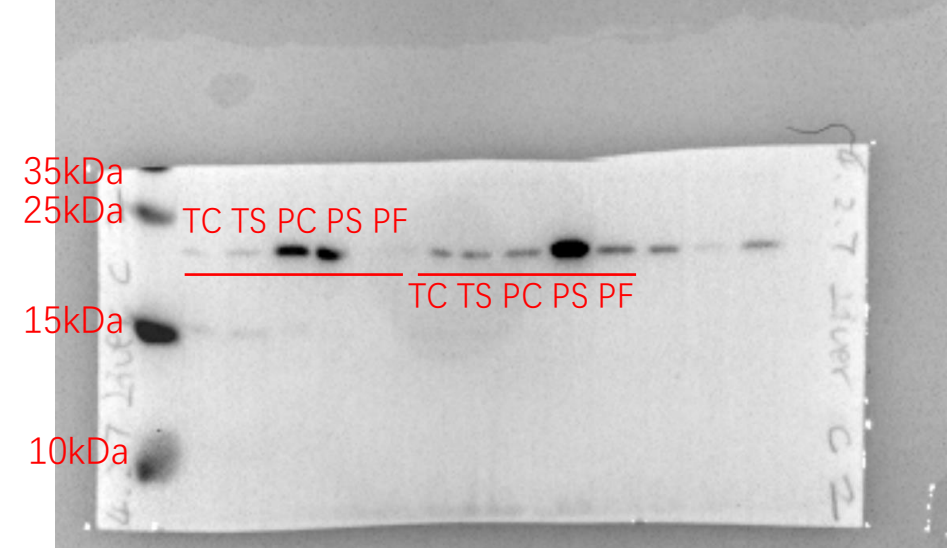
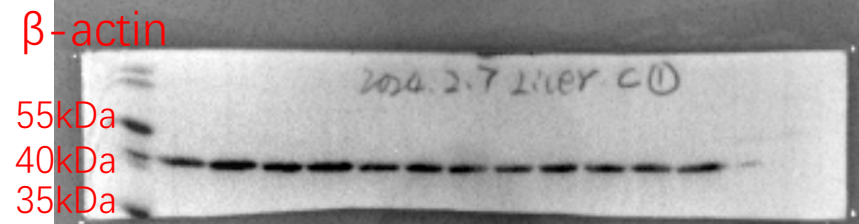
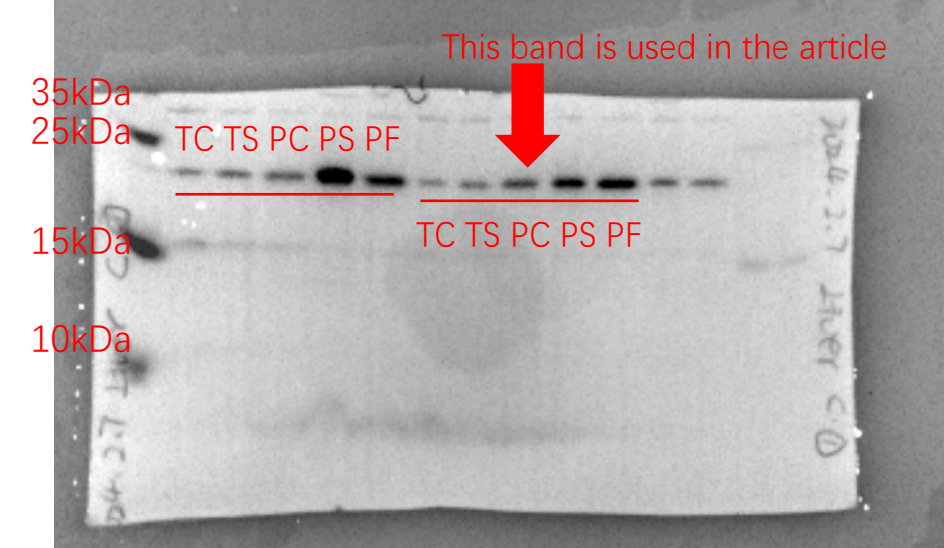
Hepatic ferritin light chain (19 kDa)

TC: full-term piglets without iron supplementation; TS: full-term piglets supplemented with Sucrosomial® iron; PC: preterm piglets without iron supplementation; PS: preterm piglets supplemented with Sucrosomial® iron; *PF: preterm piglets supplemented with FeSO4 (We did not use this data in the article)*



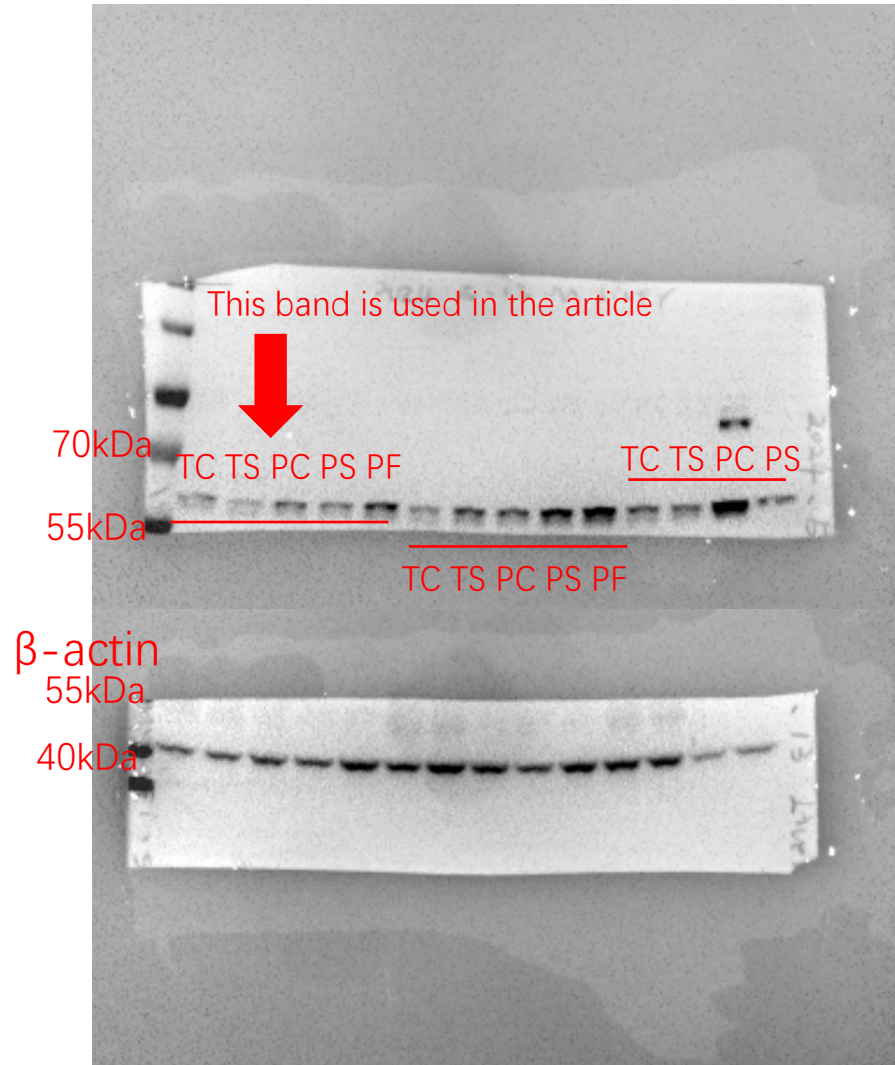
Hepatic ferritin heavy chain (21 kDa)

TC: full-term piglets without iron supplementation; TS: full-term piglets supplemented with Sucrosomial® iron; PC: preterm piglets without iron supplementation; PS: preterm piglets supplemented with Sucrosomial® iron; PF: *preterm piglets supplemented with FeSO4 (We did not use this data in the article)*



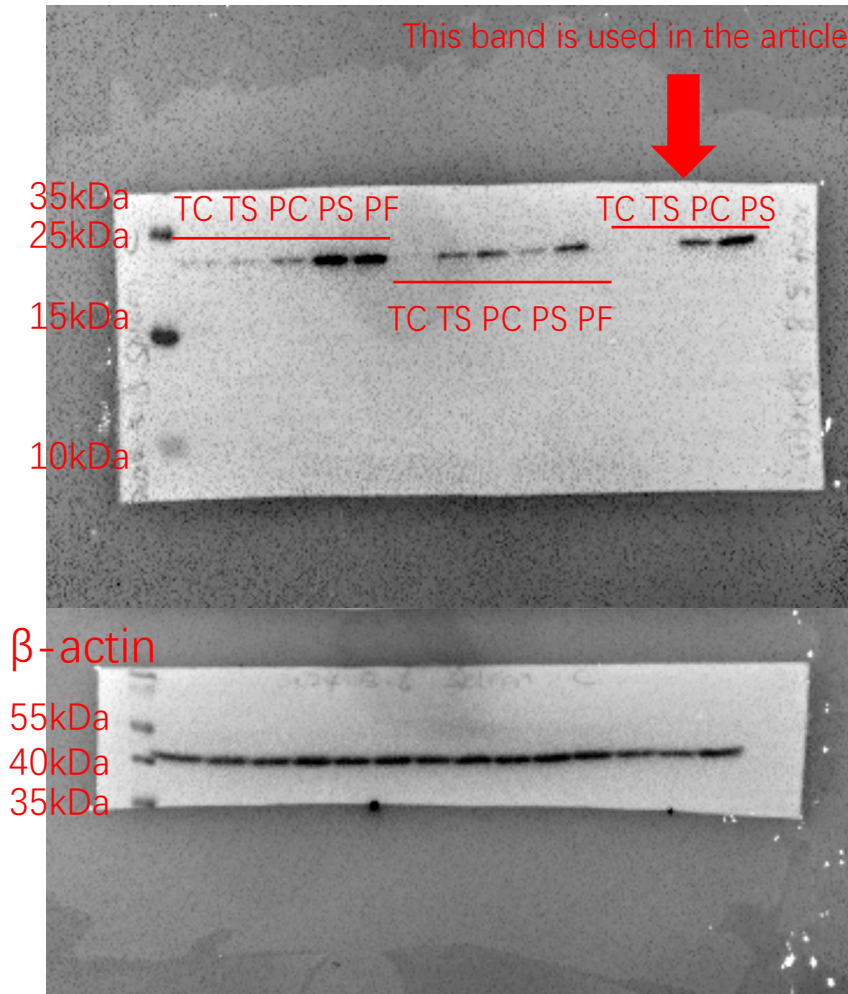
Hepatic Ferroportin (62 kDa)

TC: full-term piglets without iron supplementation; TS: full-term piglets supplemented with Sucrosomial® iron; PC: preterm piglets without iron supplementation; PS: preterm piglets supplemented with Sucrosomial® iron; *PF: preterm piglets supplemented with FeSO4 (We did not use this data in the article)*



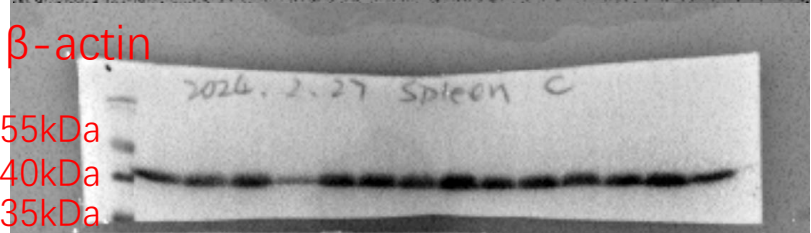
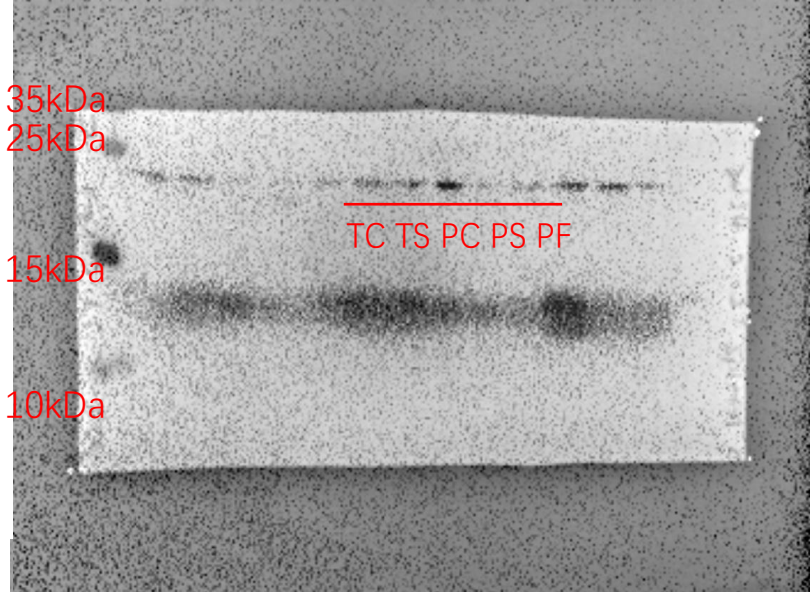
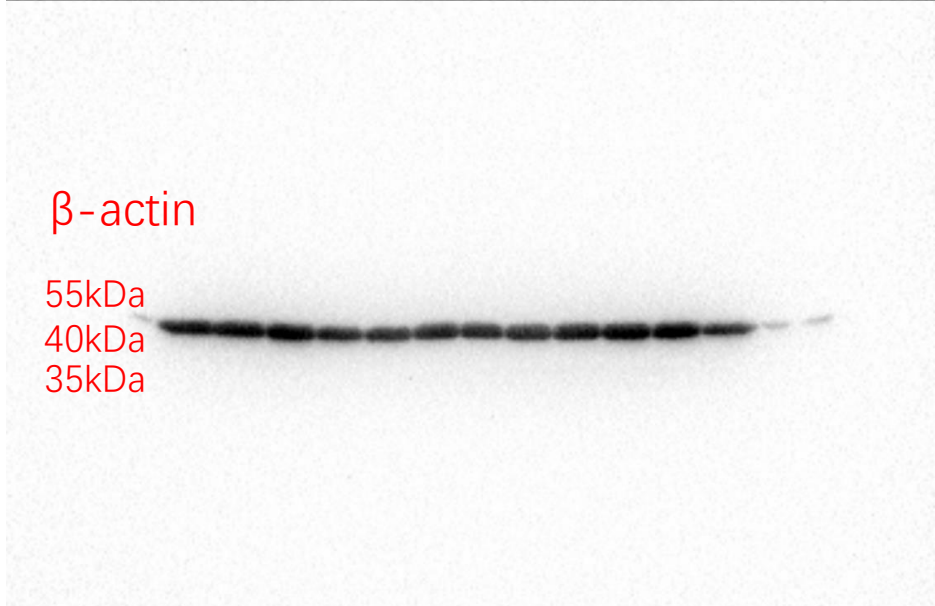
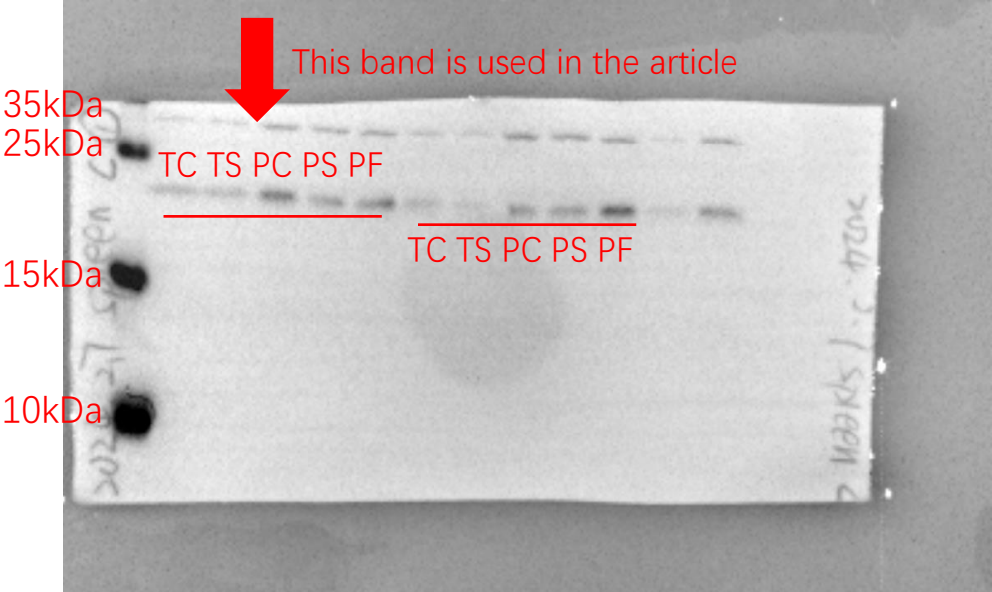
Splenic ferritin light chain (19 kDa)

TC: full-term piglets without iron supplementation; TS: full-term piglets supplemented with Sucrosomial® iron; PC: preterm piglets without iron supplementation; PS: preterm piglets supplemented with Sucrosomial® iron; *PF: preterm piglets supplemented with FeSO4 (We did not use this data in the article)*



Splenic ferritin heavy chain (21 kDa)

TC: full-term piglets without iron supplementation; TS: full-term piglets supplemented with Sucrosomial® iron; PC: preterm piglets without iron supplementation; PS: preterm piglets supplemented with Sucrosomial® iron; *PF: preterm piglets supplemented with FeSO4 (We did not use this data in the article)*



Splenic Ferroportin (62 kDa)

TC: full-term piglets without iron supplementation; TS: full-term piglets supplemented with Sucrosomial® iron; PC: preterm piglets without iron supplementation; PS: preterm piglets supplemented with Sucrosomial® iron; *PF: preterm piglets supplemented with FeSO4 (We did not use this data in the article)*

