

Table S1: The components of wheat germ and fermented wheat germ.

Components	WG	FWG
Ash (%)	8.33 ± 0.08 ^b	9.23 ± 0.08 ^a
Protein (%)	41.71 ± 1.23 ^a	20.39 ± 0.17 ^b
Total sugar (%)	34.78 ± 0.47 ^b	52.77 ± 1.35 ^a
Total dietary fibre (%)	5.96 ± 0.15 ^b	13.94 ± 0.3 ^a
Fat (%)	0.06 ± 0.007 ^a	0.05 ± 0.007 ^a
Total phenols (mg/g)	5.76 ± 0.31 ^b	8.64 ± 0.11 ^a

The data were presented as mean ± standard deviation. Different superscript lowercase letters denote statistically significant differences.

Table S2: Primer sequences used in Real-time PCR

Genes	Sequences (5'-3')	
GAPDH	F: GGGTGTGAACCACGAGAAAT	R: ACTGTGGTCATGAGCCCTTC
GLUT1	F: AGGAGATGAAAGAAGAGGGTTCG	R: GTGTTGACGATACCCGAGCC
GLUT2	F: AACAGCCTCTCGTTGACTGG	R: TGGAGCAATCTCGCCAATGT
GLUT3	F: CATCTCCGTTGTCCTCCAGT	R: GCTCCAATCGTGGCATAGAT
GLUT4	F: GACCCGCCCTTTGCACACCA	R: TCACTCGCTGCTGAGGGGGT
SGLT1	F: GACTGATTCTCGGCTTCCTG	R: CAGATGATCTTGGGGCAGTT
FATP1	F: TCGCACAGCTAGACACCTACTCC	R: CCAGGAACACAGCCACCACATC
FATP4	F:GGGTGCCAACAACAAGAAGATTGC	R: TGCGGTCTCGGAAGTACAGGTAG
FATP5	F: CTGCCAAGCTTCGTGCTAAT	R: GACCCGCTCATGTGATAGGA
FABP1	F: ACCTCATTGCCACCATGAAC	R: CTTCCCTTCATGCACGATTT
FABP2	F: GAGGCCAAGCGGATCTTTA	R: TGCATTATCAGCGAGATGGA
FABP3	F: ACAGGAAGGTCAAGTCGGTC	R: ATGGGTGAGAGTCAGGATGAG
FABP4	F: TGTGGGGACCTGGAAACTCGT	R: CGAAGCCAACCTCCACTTCTTT
SNAT1	F: GAGCACAGGCGACATTCTCATCC	R: GACATGGCGACACAGGTGGAAC
SNAT2	F: TCCGTTACCTCCTCCTCAAGAC	R: CCAGCCAGACCGTATGCCTTATG
SNAT4	F: CGAAGAAGGTAGAGGCGGGAAAGG	R: AGTTCCCATCCCGGTGTAG
SNAT9	F: TGCTGCTATGAACAAGCGGA	R: CGTGGTCTGGAGCAATCAGT
LAT1	F: TAGCCAATCTGGATCCCAAG	R: TCAAGTAATTCCATCCCCCA
LAT2	F:GCTGGAAGAAGCCTGACATC	R: ATACAGGAACACCCGTCAGC

Table S3: Information about the antibodies used in WB.

Antibodies	Catalog number	Manufacturers
mTOR	66888-1-Ig	Sanying
S6K	14485-1-AP	Sanying
AMPK	AF6423	Affinity
4EBP1	AF6432	Affinity
p-mTOR	67778-1-Ig	Sanying
p-S6K	AF3228	Affinity
p-AMPK	AF3423	Affinity
p-4EBP1	AF3830	Affinity
β -actin	AC026	ABclonal

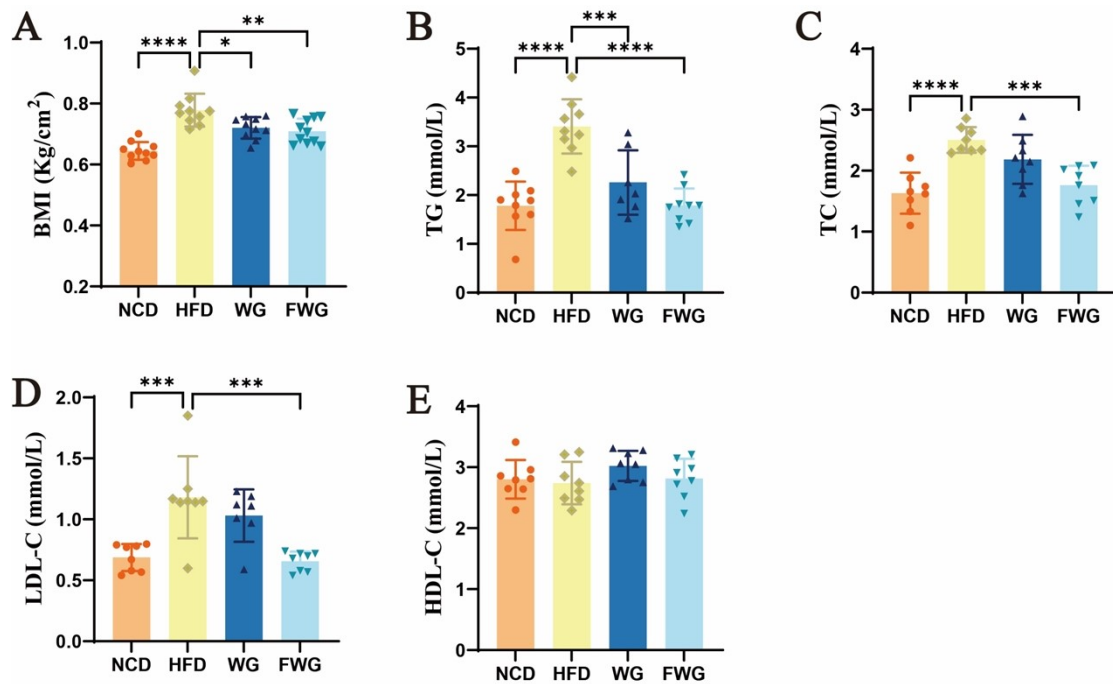


Fig.S1. The effects of FWG on pre-pregnancy BMI and serum levels of TG, TC, LDL-C, and HDL-C in rats with HFD-induced maternal obesity. (A) BMI (B) TG, (C) TC, (D) LDL-C, (E) HDL-C.

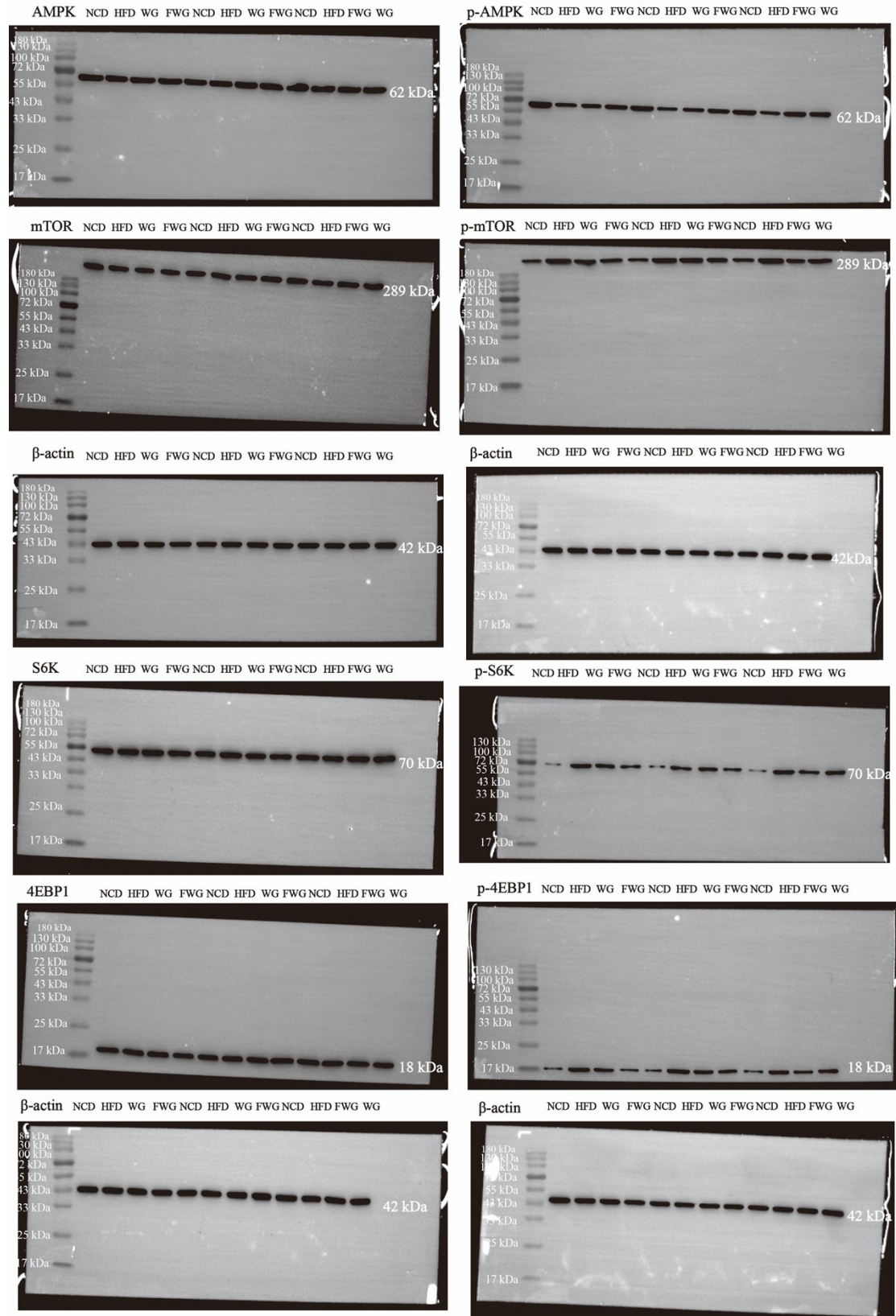


Fig. S2. Raw images of the electrophoretic gels and blots in Figure 6.