

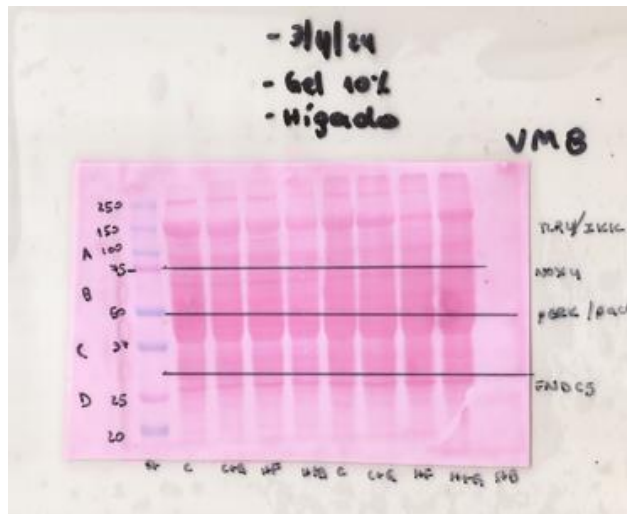
## **Supplementary Information**

**“Grape pomace extract attenuates high fat diet-induced endotoxemia and liver steatosis in mice”**

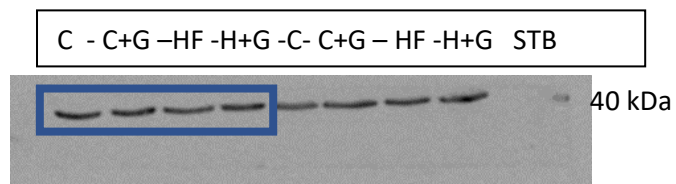
Supplementary **Figure 2**: Original Western blotting images presented in the study  
Uncropped blots for Figure 2B

○ **Hepatic TLR4 and corresponding loading control  $\beta$ -actin:**

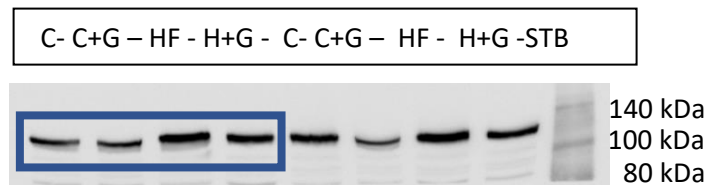
○ **Ponceau:**



○ **Full Blot  $\beta$ -actin:**



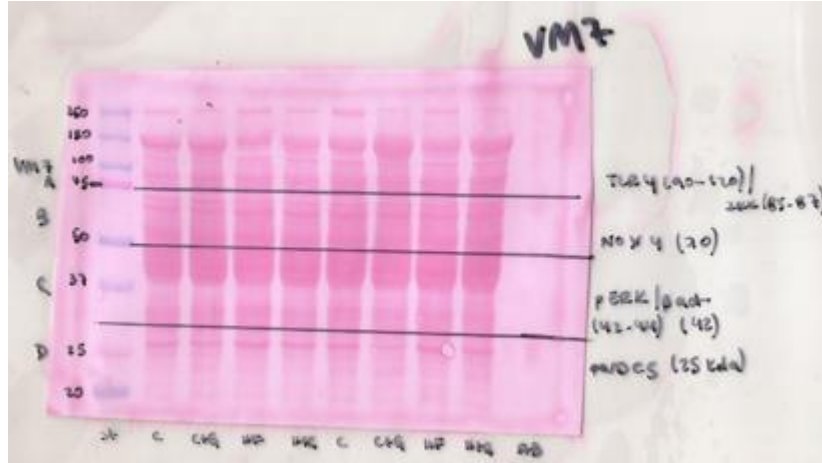
○ **Full Blot TLR4: 95/120 kDa**



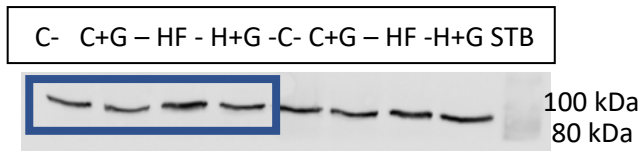
Supplementary **Figure 4**: Original Western blotting images presented in the study  
 Uncropped blots for Figure **4A**

○ **Hepatic p-IKK $\alpha$ / $\beta$  and corresponding total IKK**

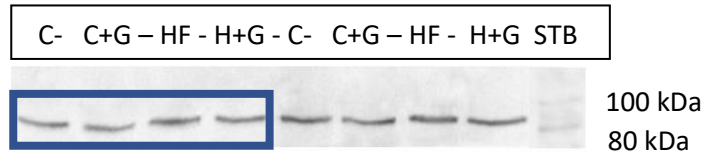
○ **Ponceau:**



○ **Full blot p-IKK  $\alpha$ / $\beta$ : 85-87 kDa**

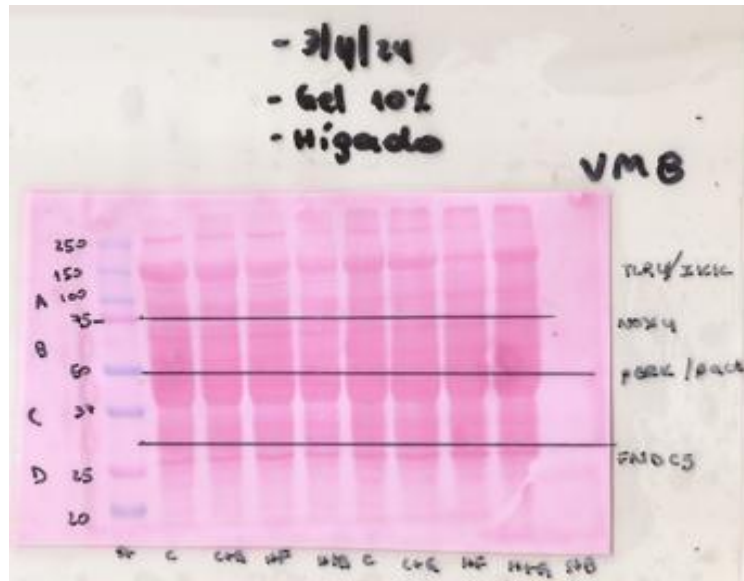


○ **Full blot IKK  $\alpha$ / $\beta$ : 85-87 kDa**

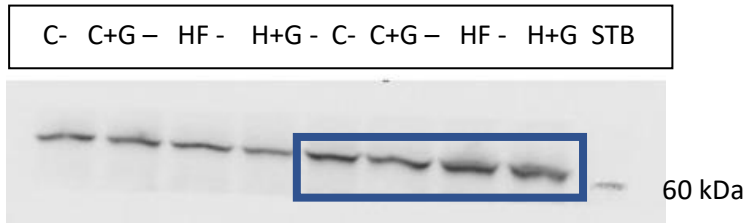


- Hepatic p-p65 and corresponding total p65

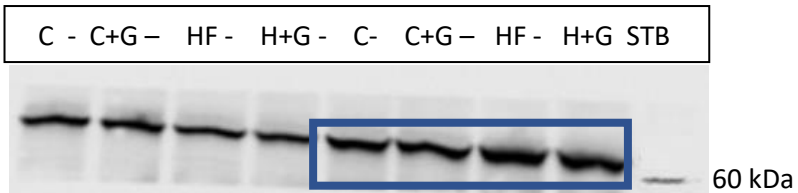
- Ponceau:



- Full blot p-P65: 65 kDa



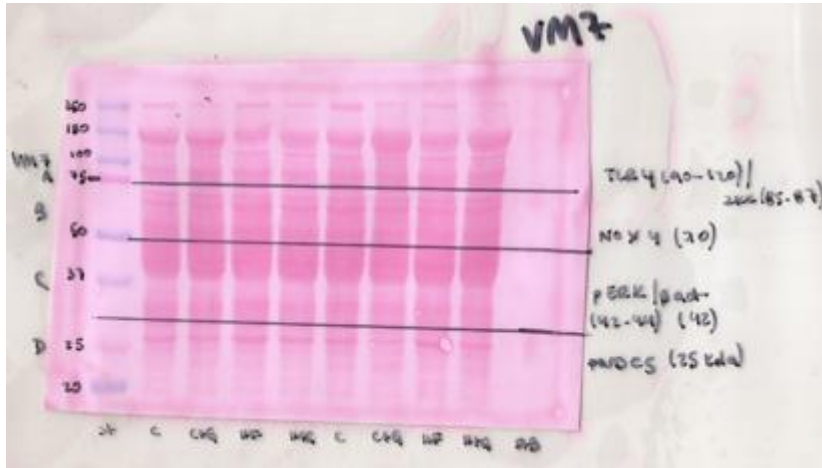
- Full blot P65: 65 kDa



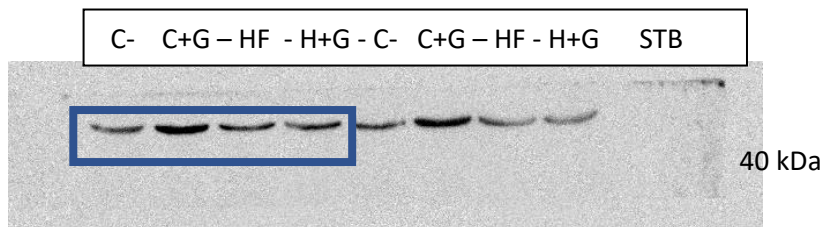
Supplementary **Figure 4**: Original Western blotting images presented in the study  
Uncropped blots for Figure **4B**

○ **Hepatic NOX4 and corresponding loading control  $\beta$ -actin**

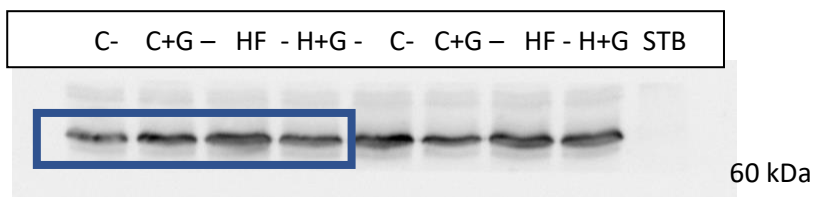
○ **Ponceau:**



○ **Full Blot  $\beta$ -actin:**

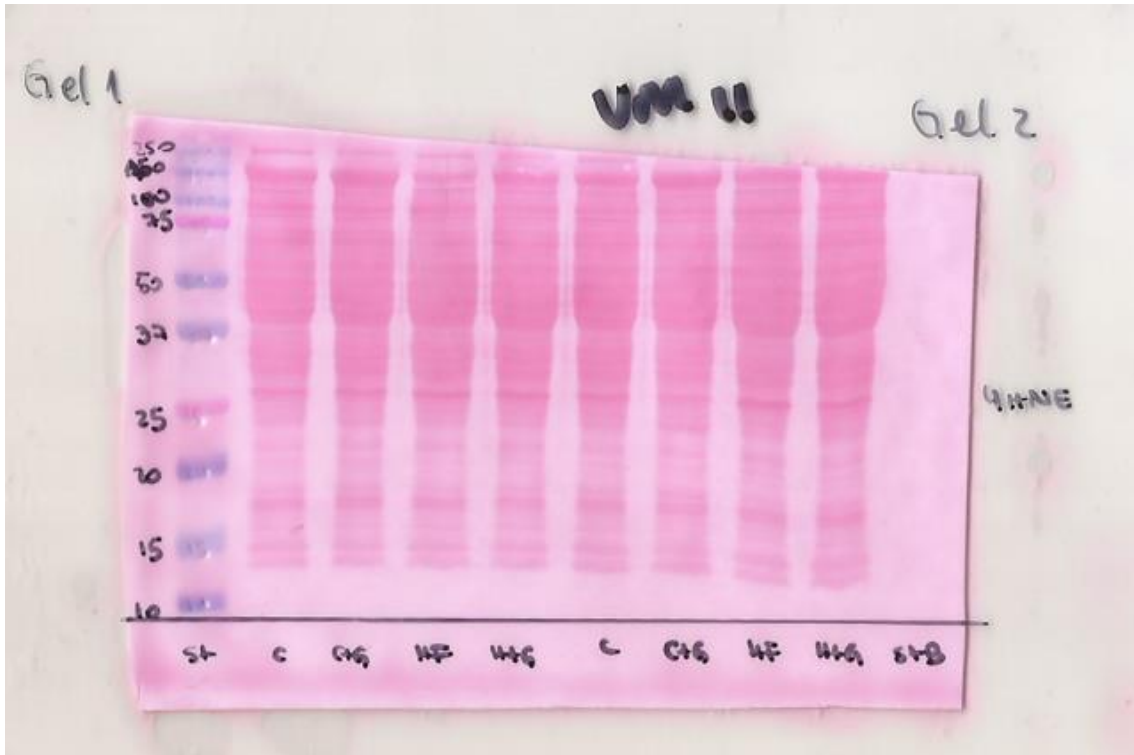


○ **Full Blot NOX4: 70kDa**

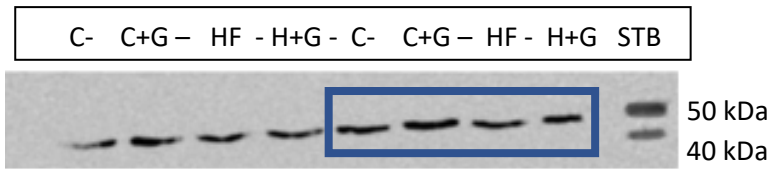


- Hepatic 4-HNE and corresponding loading control  $\beta$ -actin

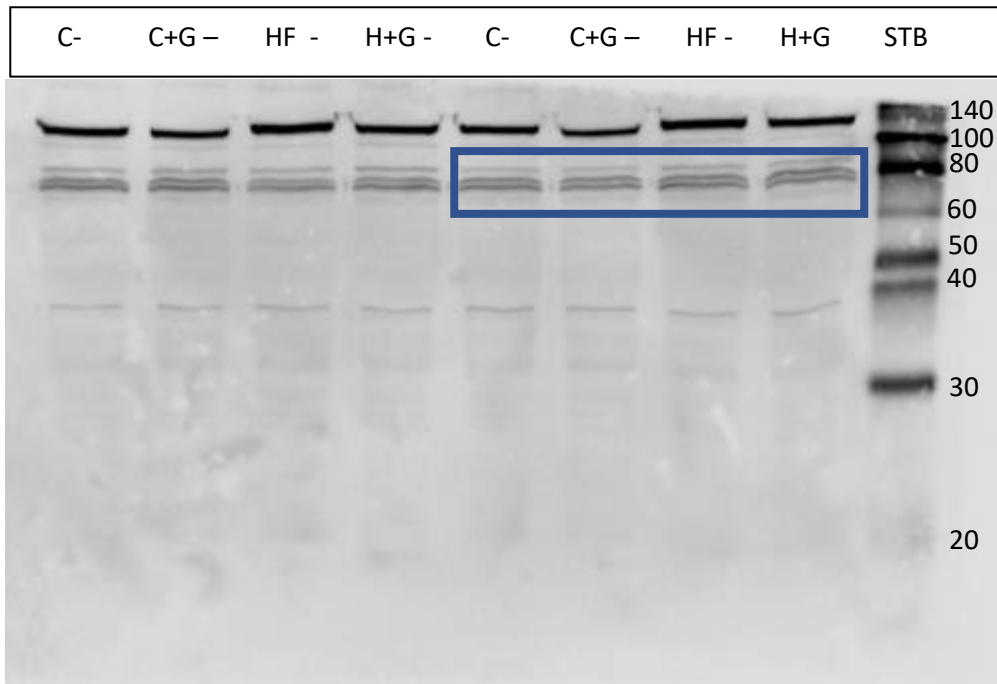
- Ponceau:



- Full blot  $\beta$ -actin:

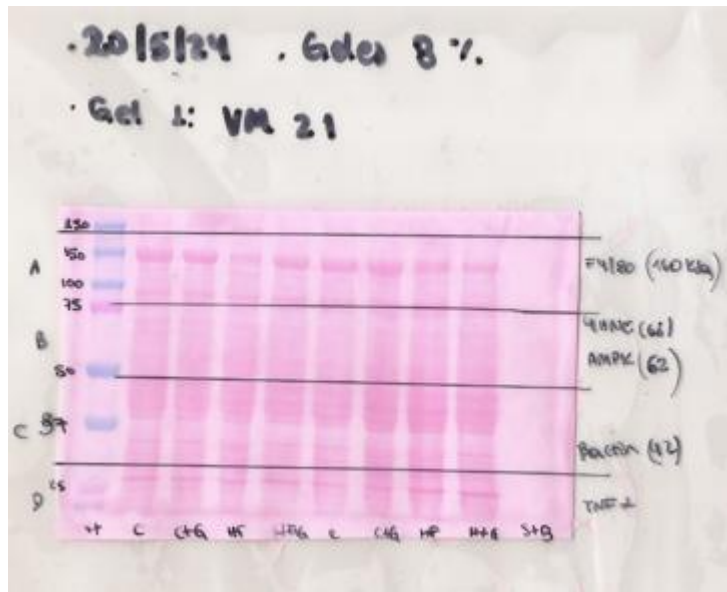


- Full blot 4HNE: 66 kDa



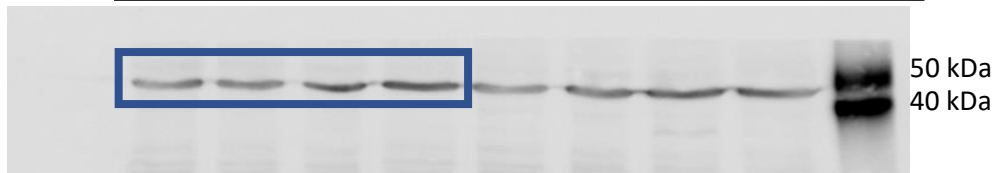
Supplementary **Figure 4**: Original Western blotting images presented in the study  
 Uncropped blots for Figure **4C**

- **Hepatic F4/80 and corresponding loading control  $\beta$ -actin**
  - **Ponceau:**



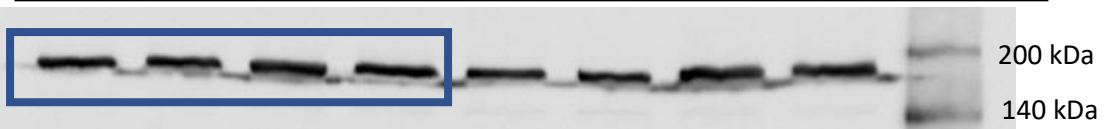
- **Full Blot B-actin:**

C- C+G - HF - H+G - C - C+G - HF - H+G STB



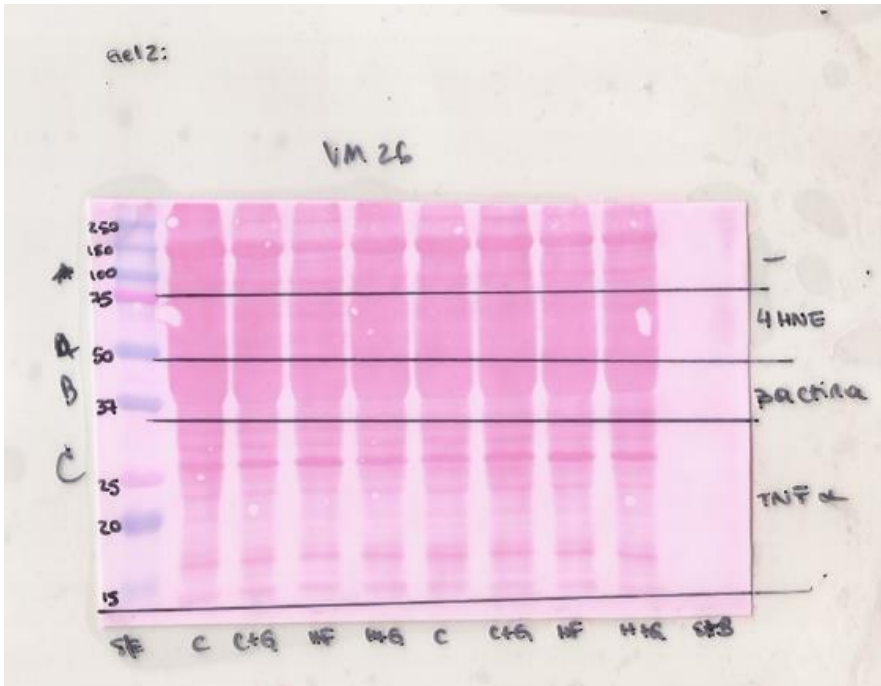
- **Full Blot F4/80: 160 kDa**

C- C+G - HF - H+G - C- C+G - HF - H+G STB

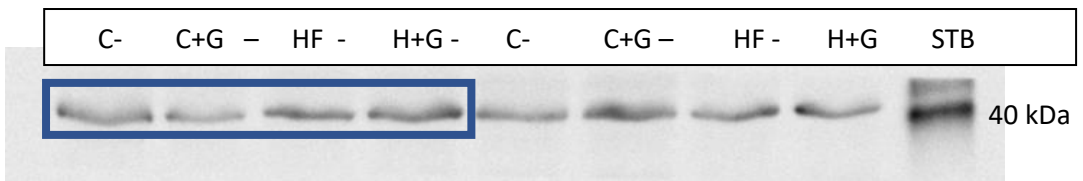


- **Hepatic TNF- $\alpha$  and corresponding loading control  $\beta$ -actin**

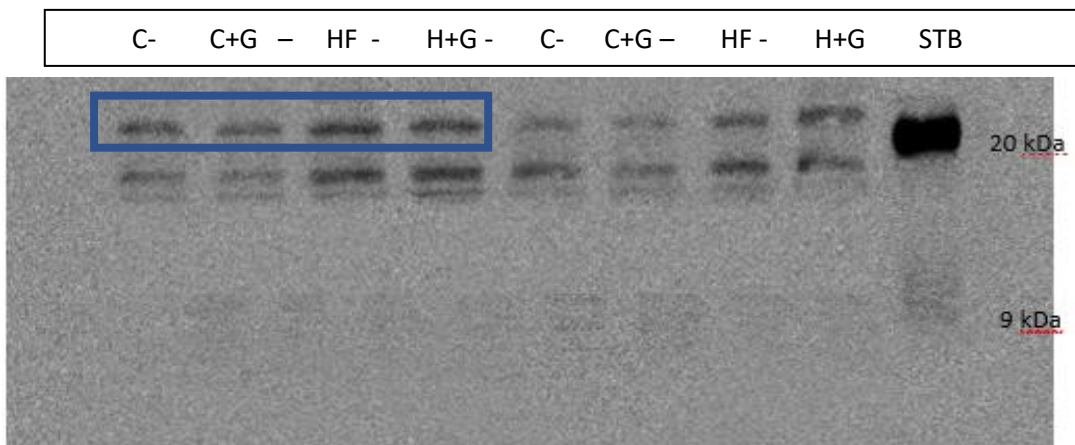
- **Ponceau:**



- **Full Blot B-actin:**



- **Full Blot TNF $\alpha$ : 26 kDa**



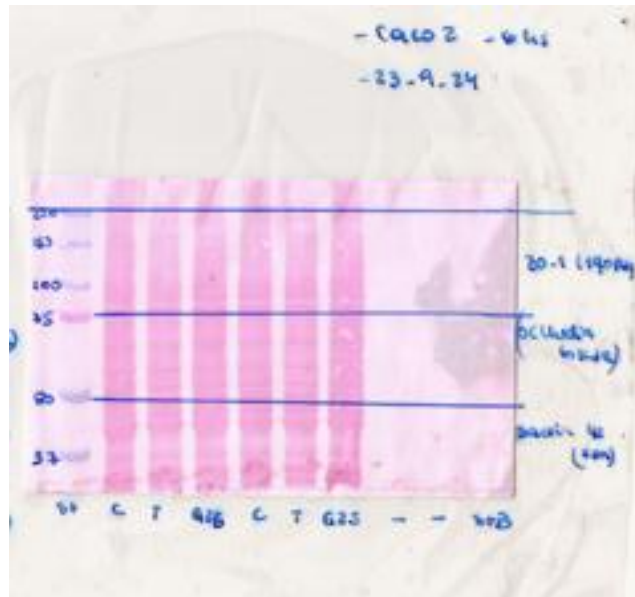


Supplementary **Figure 5**: Original Western blotting images presented in the study.

Uncropped blots for Figure **5C**

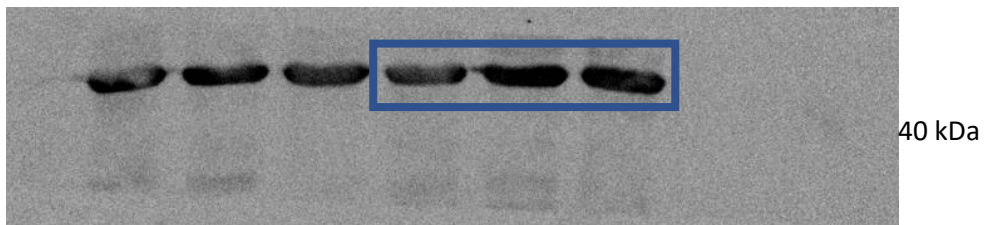
- **Caco-2 occludin and corresponding loading control  $\beta$ -actin:**

- **Ponceau:**



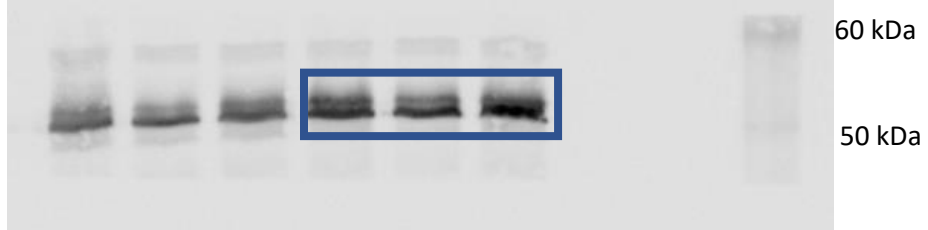
- **Full blot B-actin:**

ST C - T - G25 - C - T - G25 - - - STB



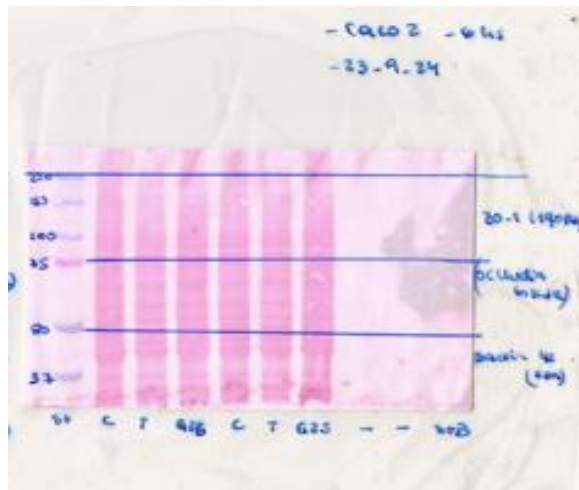
- **Full blot Occludin:** ~ 52 kDa

C - T - G25 - C - T - G25 - - - STB



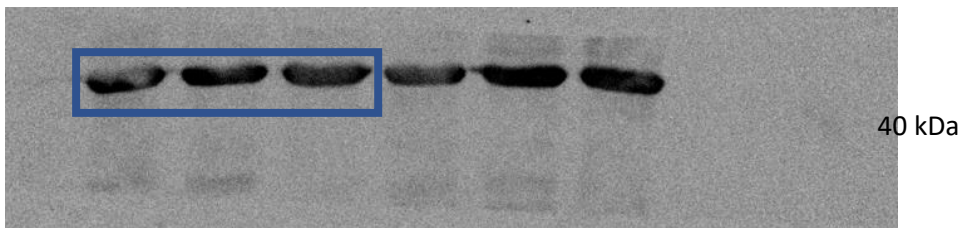
- **Caco-2 ZO-1 and corresponding loading control  $\beta$ -actin:**

- **Ponceau:**



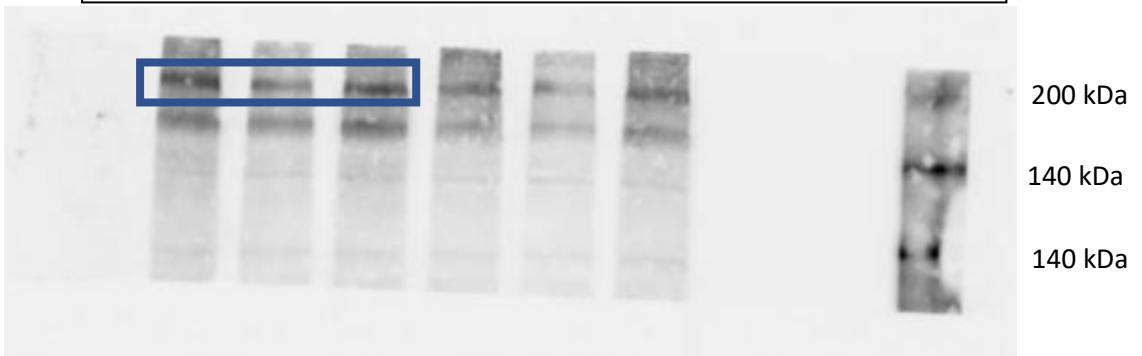
- **Full blot B-actin:**

C	-	T	-	G25	-	C	-	T	-	G25	-	-	-	STB
---	---	---	---	-----	---	---	---	---	---	-----	---	---	---	-----



- **Full blot ZO-1: ~225 kDa**

C	-	T	-	G25	-	C	-	T	-	G25	-	-	-	STB
---	---	---	---	-----	---	---	---	---	---	-----	---	---	---	-----

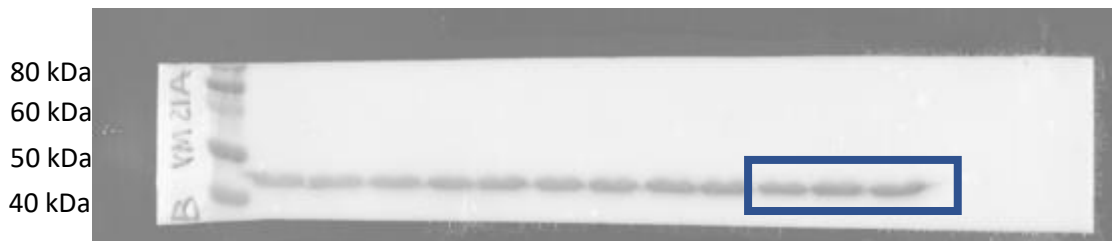


- Caco-2 Claudin and corresponding loading control  $\beta$ -actin:
  - Ponceau:



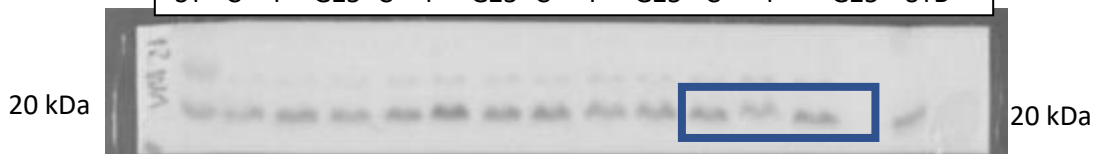
- Full blot B-actin:

ST- C - T - G25- C - T - G25- C - T - G25- C - T - G25 STB



- Full blot Claudin: ~20 kDa

ST- C - T - G25- C - T - G25- C - T - G25- C - T - G25 STB

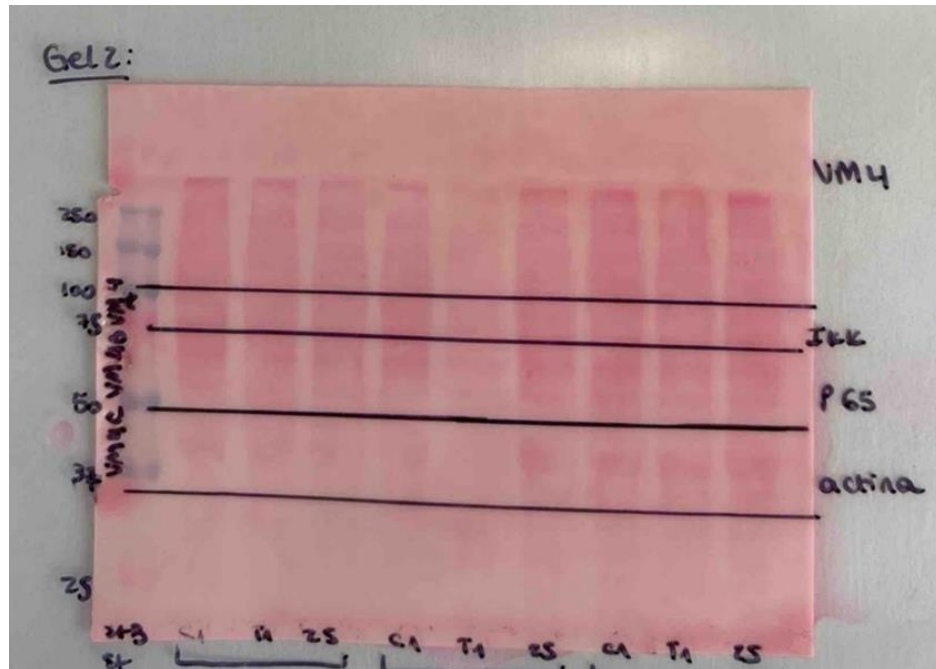


Supplementary **Figure 6**: Original Western blotting images presented in the study.

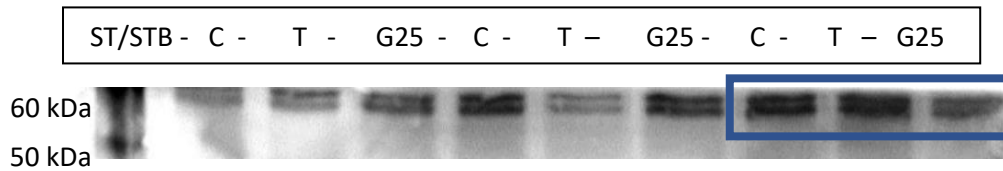
Uncropped blots for Figure 6C

○ **Caco-2 p-p65 and corresponding loading control p-65:**

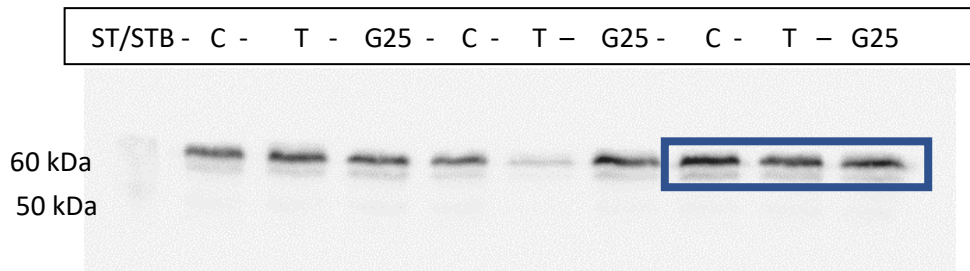
○ **Ponceau:**



○ **Full blot -pp65:** 65 kDa

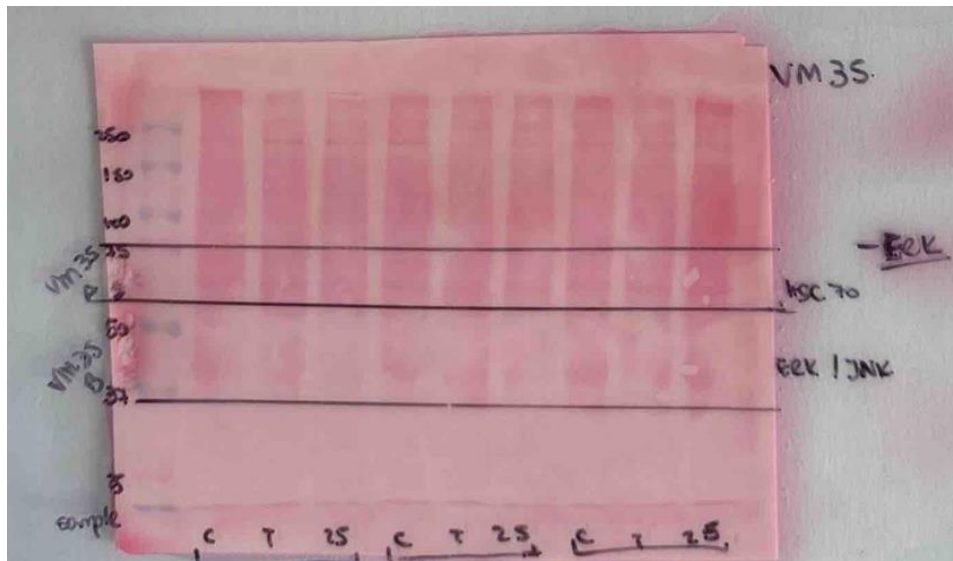


○ **Full blot p65:** 65 kDa



- **Caco-2 p-ERK and corresponding loading control ERK:**

- **Ponceau:**



- **Full blot p-ERK: 42-44 kDa**

ST/STB - C - T - G25 - C - T - G25 - C - T - G25



- **Full blot ERK: 42-44 kDa**

ST/STB - C - T - G25 - C - T - G25 - C - T - G25

