

## Supplementary Materials

### Synthesis of Pumice and Medical Waste Incinerator Fly Ash based Phosphate Geopolymers for Methylene Blue Dye Adsorption: Co-valorization, parameters and mechanism

Collins Onyango<sup>1</sup>, Wilfrida Nyairo<sup>1</sup>, Bowa Kwach<sup>1</sup>, Victor Shikuku<sup>2\*</sup>, Sylvain Tome<sup>3,4</sup>, Hermann Dzoujo Tamaguelon<sup>3</sup>, Claus Rüscher<sup>4</sup>

<sup>1</sup>Department of Chemistry, Maseno University, P.O. Box 333, Kisumu, Kenya

<sup>2</sup>Department of Physical Sciences, Kaimosi Friends University, P.O. Box 385-50309 Kaimosi-Kenya

<sup>3</sup>Department of Chemistry, Faculty of Sciences, University of Douala, P.O. Box 24157, Douala, Cameroon

<sup>4</sup>Institut für Mineralogie, Leibniz Universität Hannover, Callinstrasse 3, D-30167 Hannover, Germany

\*Corresponding author: [vshikuku@kafu.ac.ke](mailto:vshikuku@kafu.ac.ke)

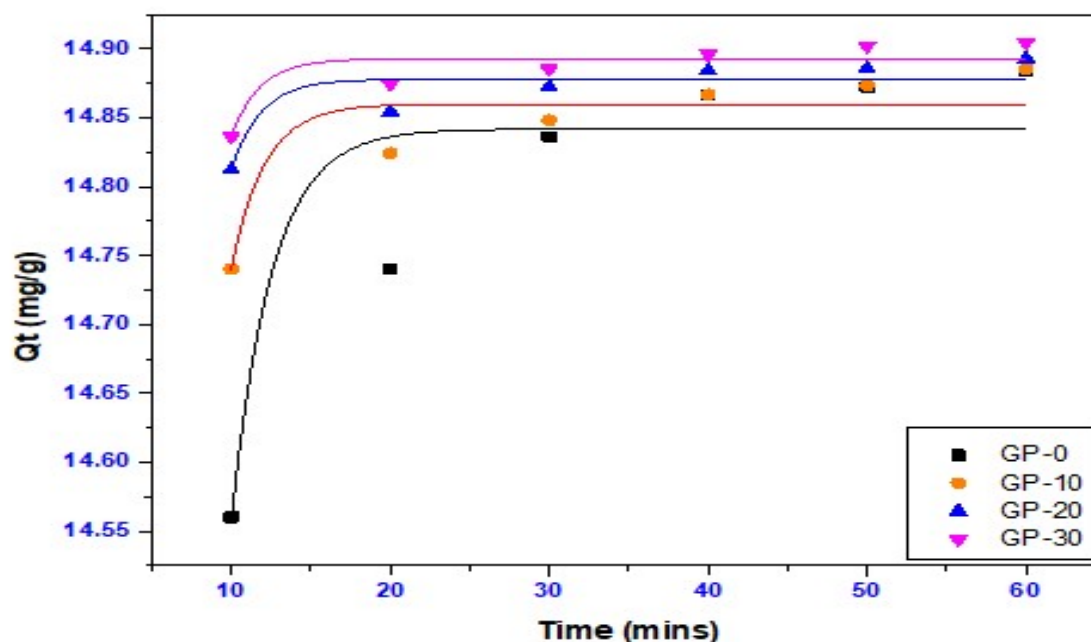


Figure S1: Pseudo First Order kinetic model

## Supplementary Materials

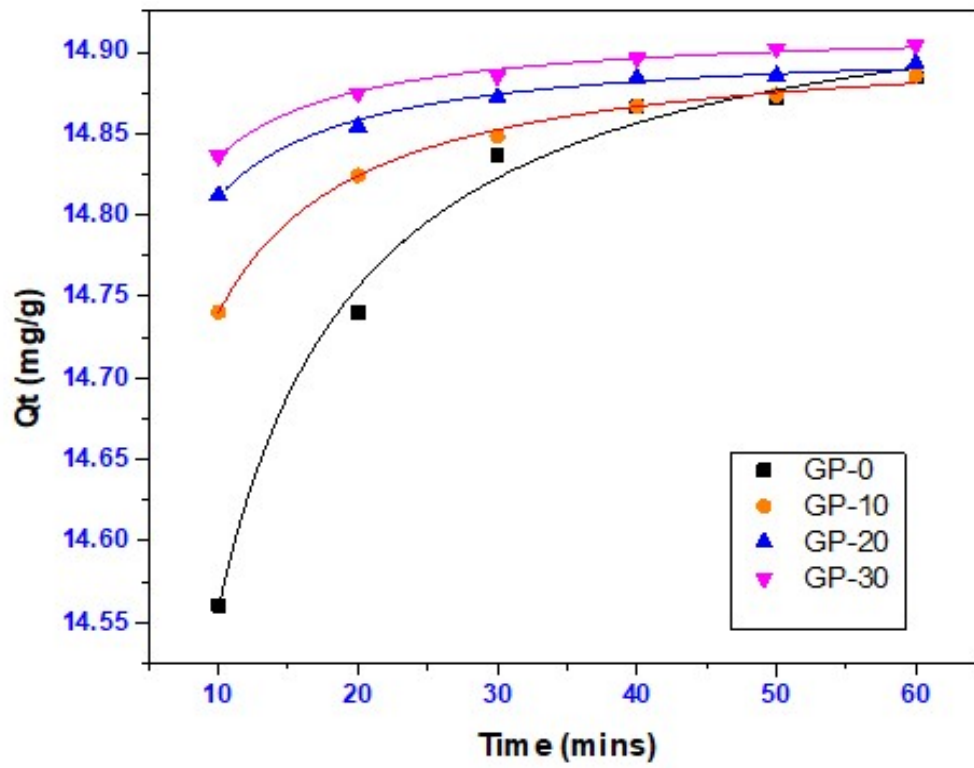


Figure S2: Pseudo Second Order kinetic model

## Supplementary Materials

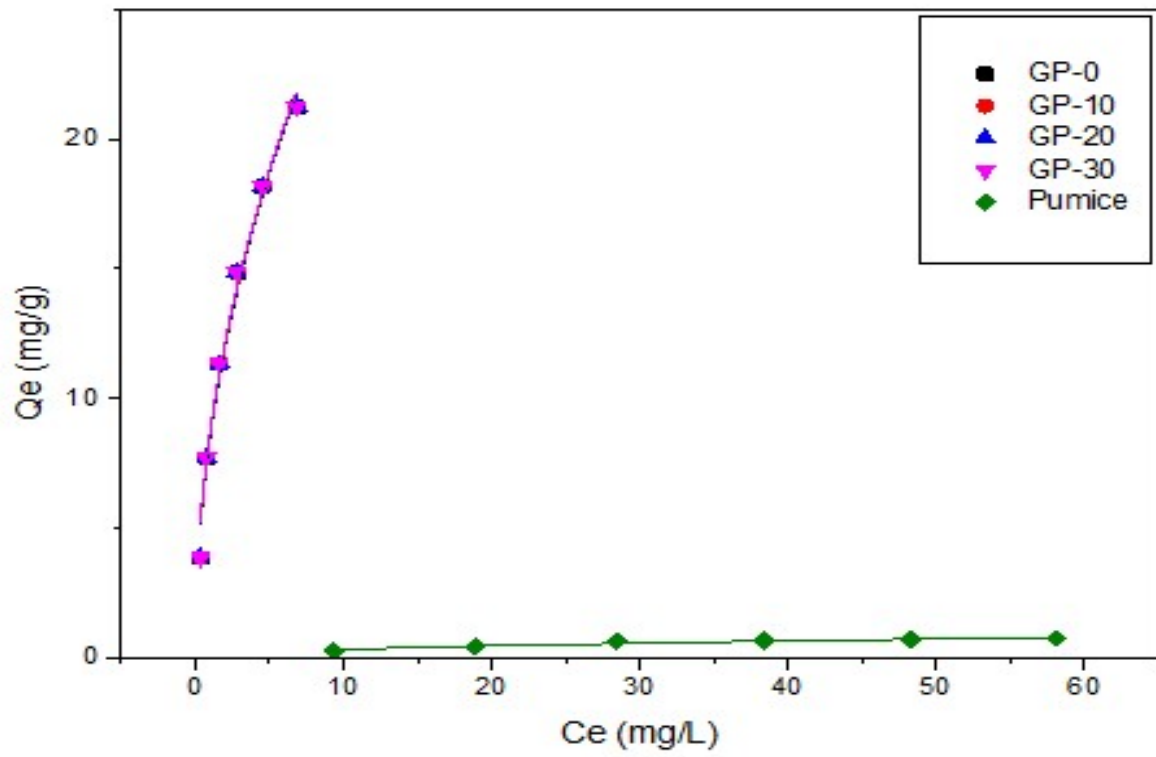


Figure S3: Freundlich Isotherm

# Supplementary Materials

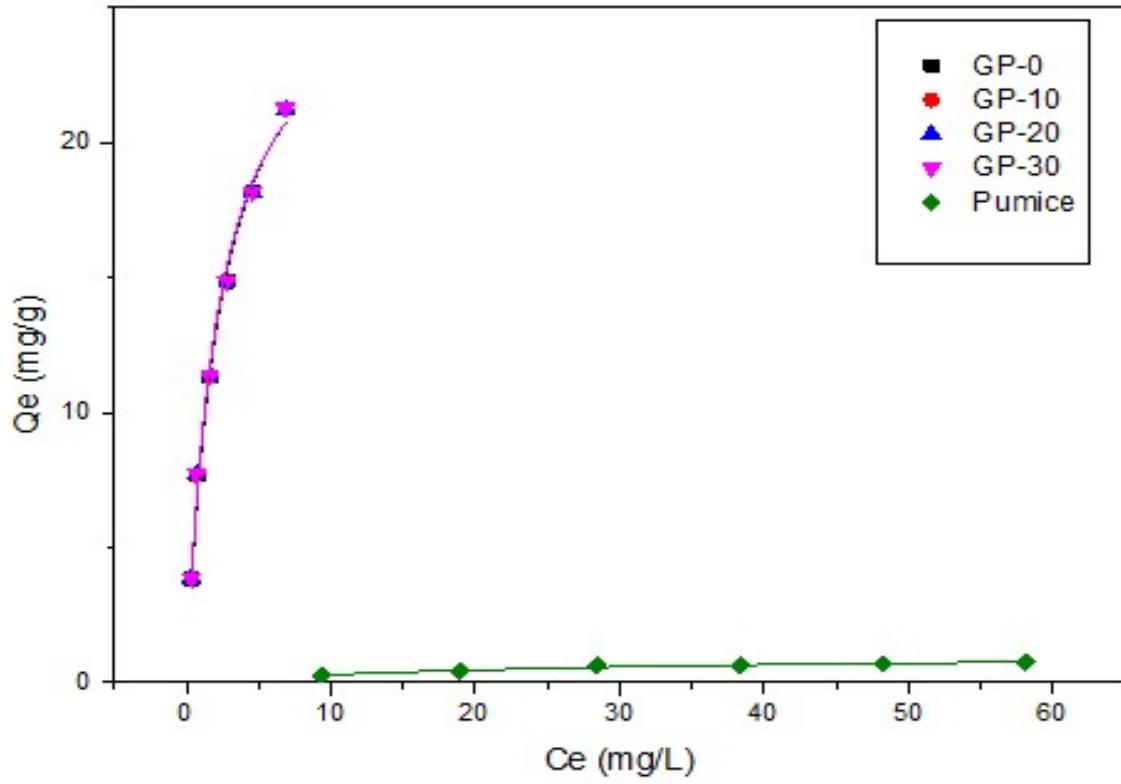


Figure S4: Langmuir Isotherm

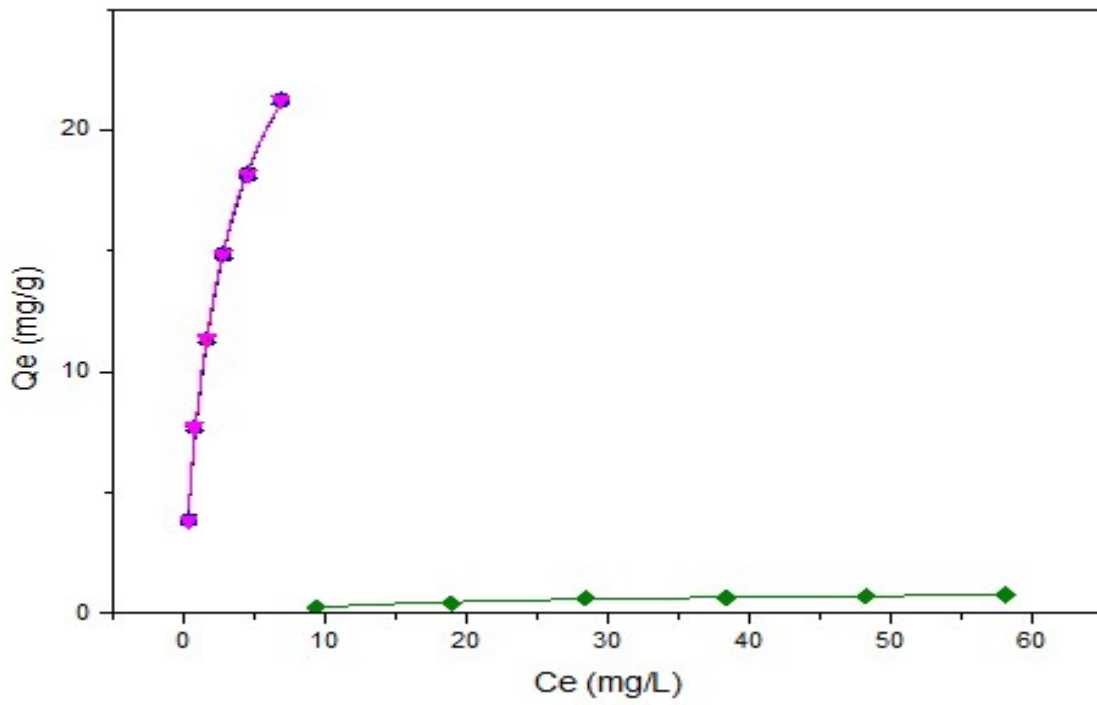


Figure S5: Sips Isotherm

## Supplementary Materials

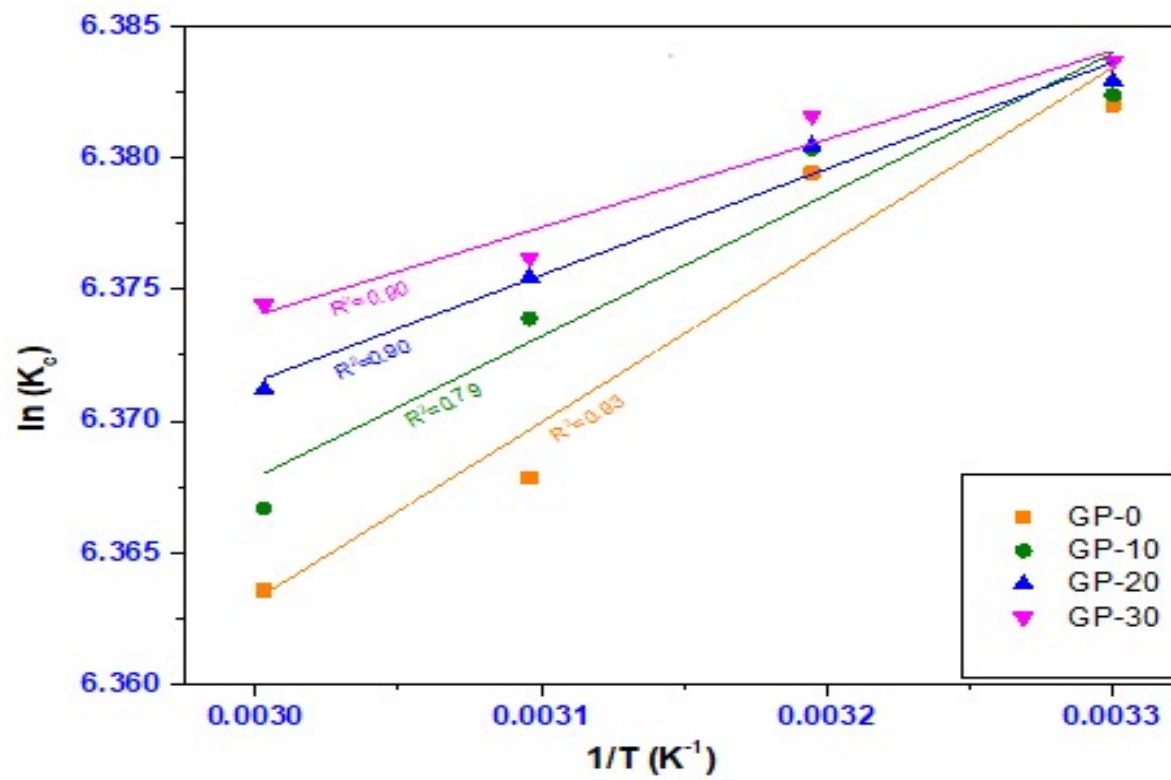


Figure S6: Van't Hoff plots