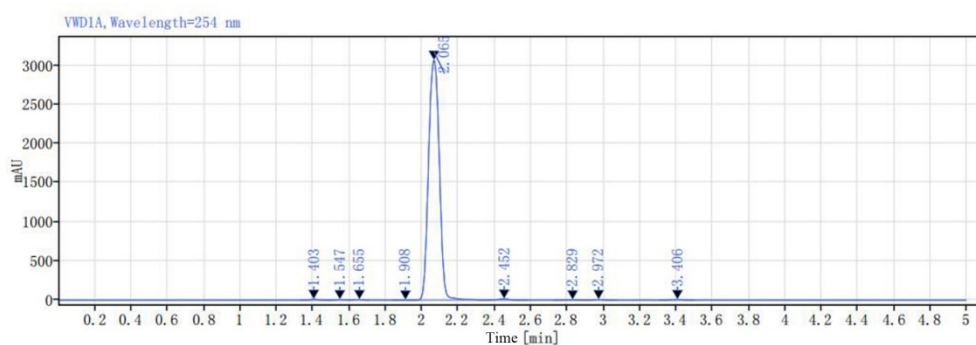


## HPLC Traces of RY-1-92:

### Single injection report

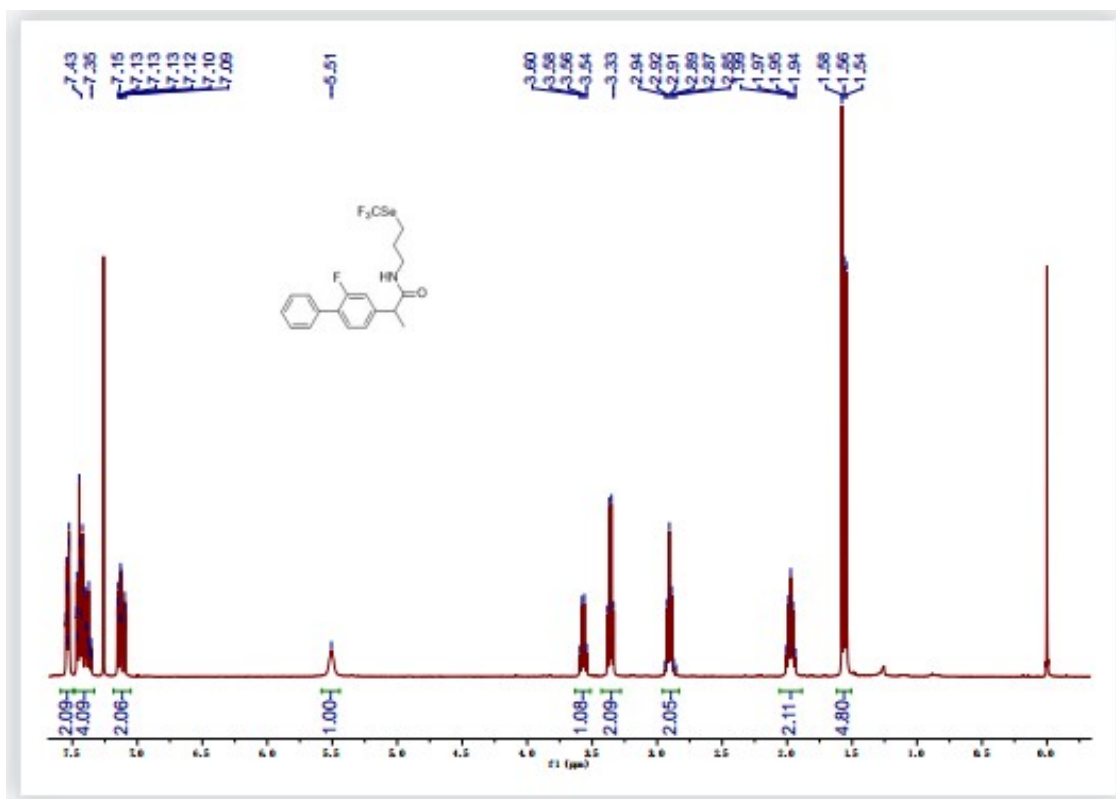


Signal: VWD1A, Wavelength=254 nm

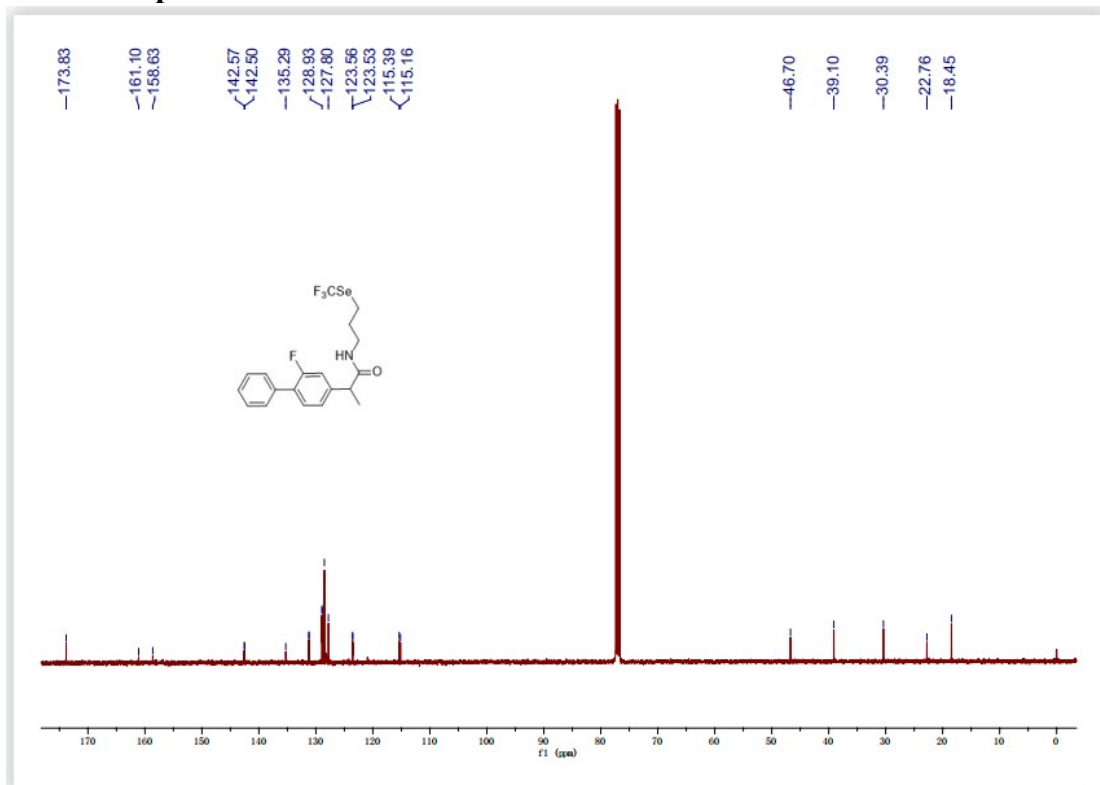
#### Retention time

(min)	Type	Peak width	Peak area	Height	Peak area%
1.403	VB	0.16	33.66	10.67	0.26
1.547	BV	0.12	23.61	6.39	0.18
1.655	VV	0.11	25.70	6.87	0.20
1.908	BB	0.12	5.62	1.93	0.04
2.065	BV	0.39	12614.64	3066.13	98.08
2.452	VV	0.23	67.27	13.83	0.52
2.829	BV	0.16	21.46	3.64	0.17
2.972	VB	0.17	31.55	7.24	0.25
3.406	VV	0.19	38.51	8.37	0.30
	Sum:		12862.02		

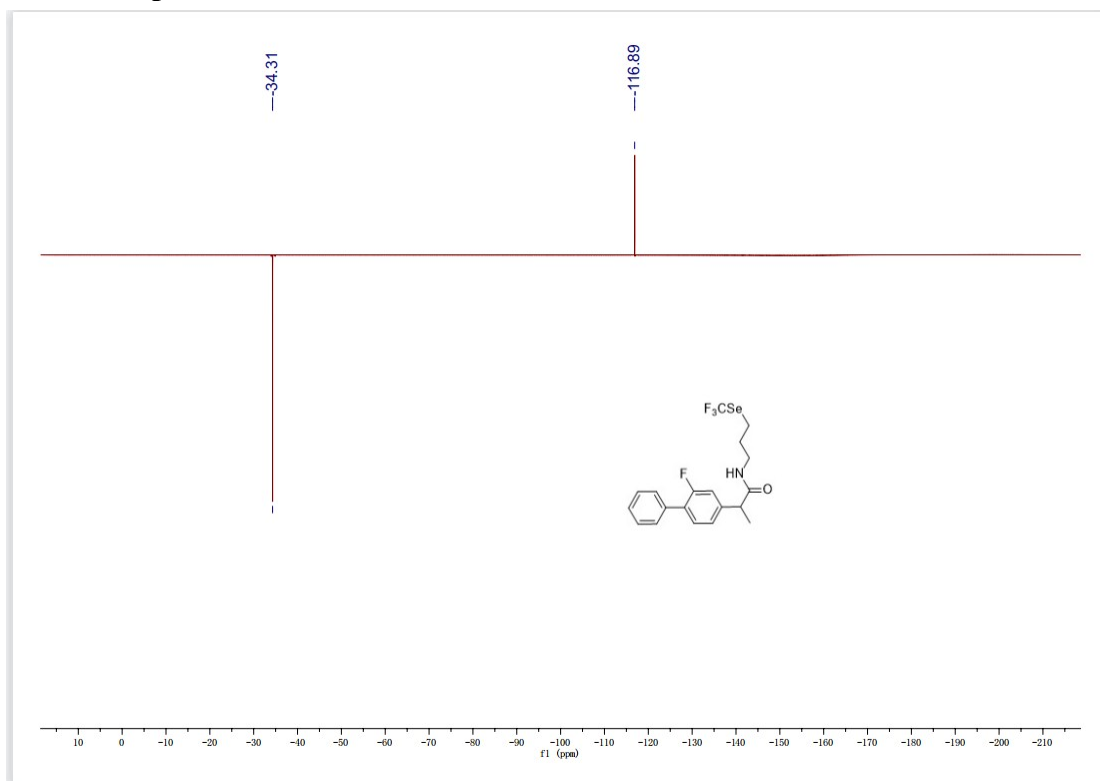
**<sup>1</sup>H NMR spectra for RY-1-92:**



### <sup>13</sup>C NMR spectra for RY-1-92:



**<sup>19</sup>F NMR spectra for RY-1-92:**



# MS spectra for RY-1-92:

