

## Supporting Information

### Exploiting the DCAF16-SPIN4 interaction to identify DCAF16 ligands for PROTAC development

Isabella A. Riha<sup>1</sup>, Miguel A. Campos<sup>1,2</sup>, Xiaokang Jin<sup>1</sup>, Fiona Y. Wang<sup>1</sup>, Chenlu Zhang<sup>1</sup>, Sara F. Dunne<sup>3</sup>, Benjamin F. Cravatt<sup>4</sup>, and Xiaoyu Zhang<sup>1,2,5,6,7\*</sup>

<sup>1</sup>Department of Chemistry, Northwestern University, Evanston, IL 60208

<sup>2</sup>Chemistry of Life Processes Institute, Northwestern University, Evanston, IL 60208

<sup>3</sup>High Throughput Analysis Laboratory, Northwestern University, Evanston, IL 60208

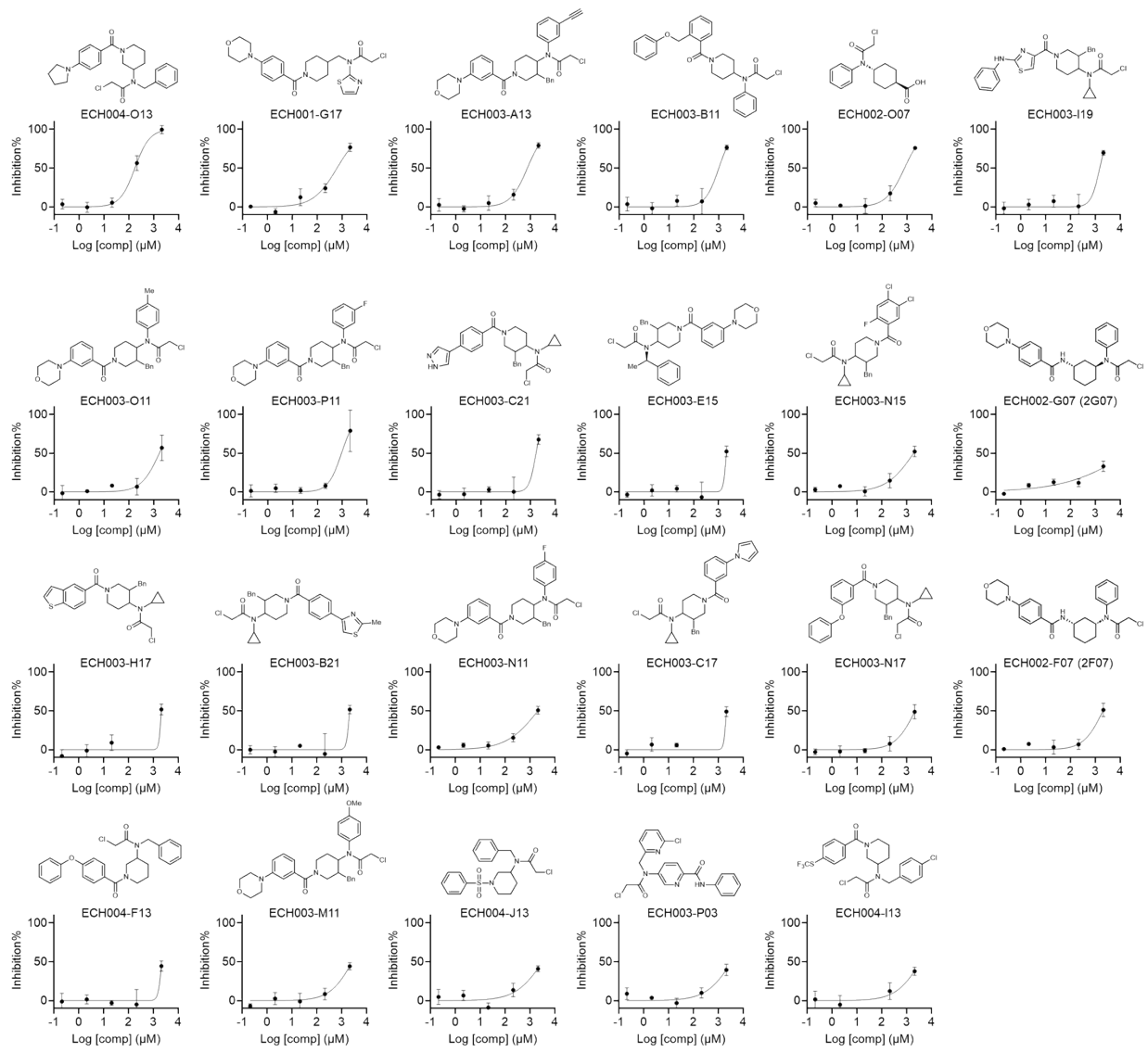
<sup>4</sup>Department of Chemistry, The Scripps Research Institute, La Jolla, CA 92037

<sup>5</sup>International Institute for Nanotechnology, Northwestern University, Evanston, IL 60208

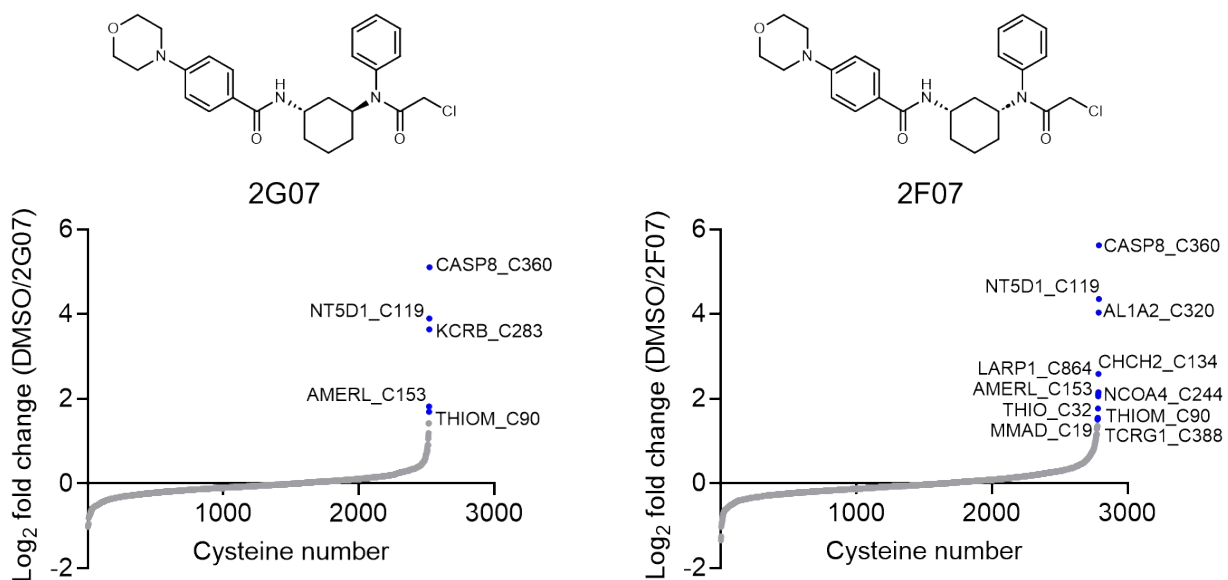
<sup>6</sup>Robert H. Lurie Comprehensive Cancer Center, Northwestern University Feinberg School of Medicine, Chicago, IL 60611

<sup>7</sup>Center for Human Immunobiology, Northwestern University Feinberg School of Medicine, Chicago, IL 60611

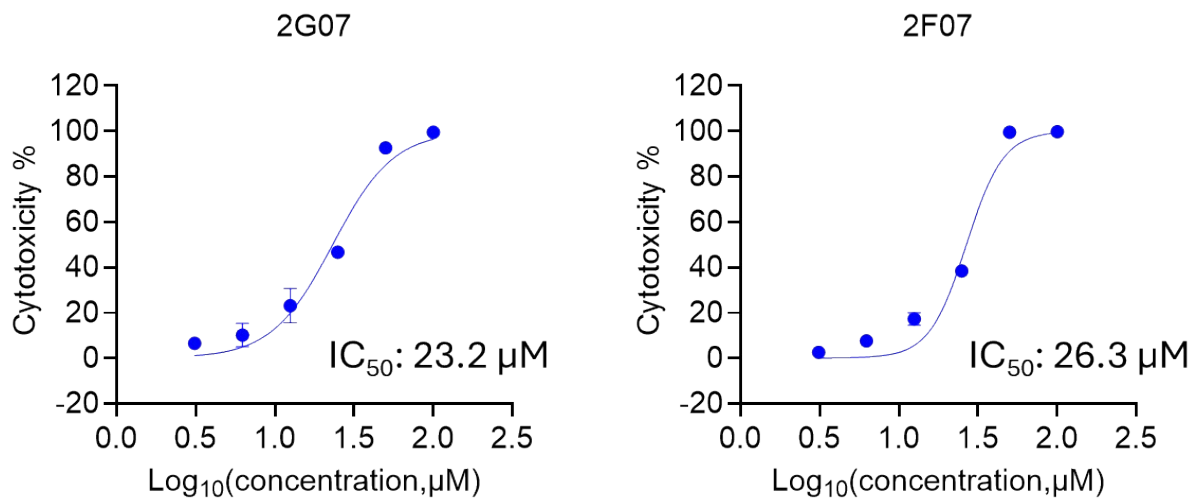
\*To whom correspondence should be addressed: [zhang@northwestern.edu](mailto:zhang@northwestern.edu)



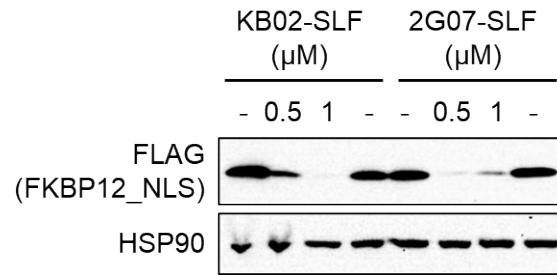
**Figure S1.** Dose-dependent inhibition of the DCAF16-SPIN4 interaction in HTRF assay for 23 hit compounds. Data are presented as the mean values  $\pm$  SEM (n = 3).



**Figure S2.** Waterfall plot showing the ratio values of iodoacetamide probe-enriched peptides in DMSO-treated versus compound-treated samples. A higher ratio indicates potential modification of cysteine-containing peptides by the compound. Ratio values are shown as mean values (n = 2).

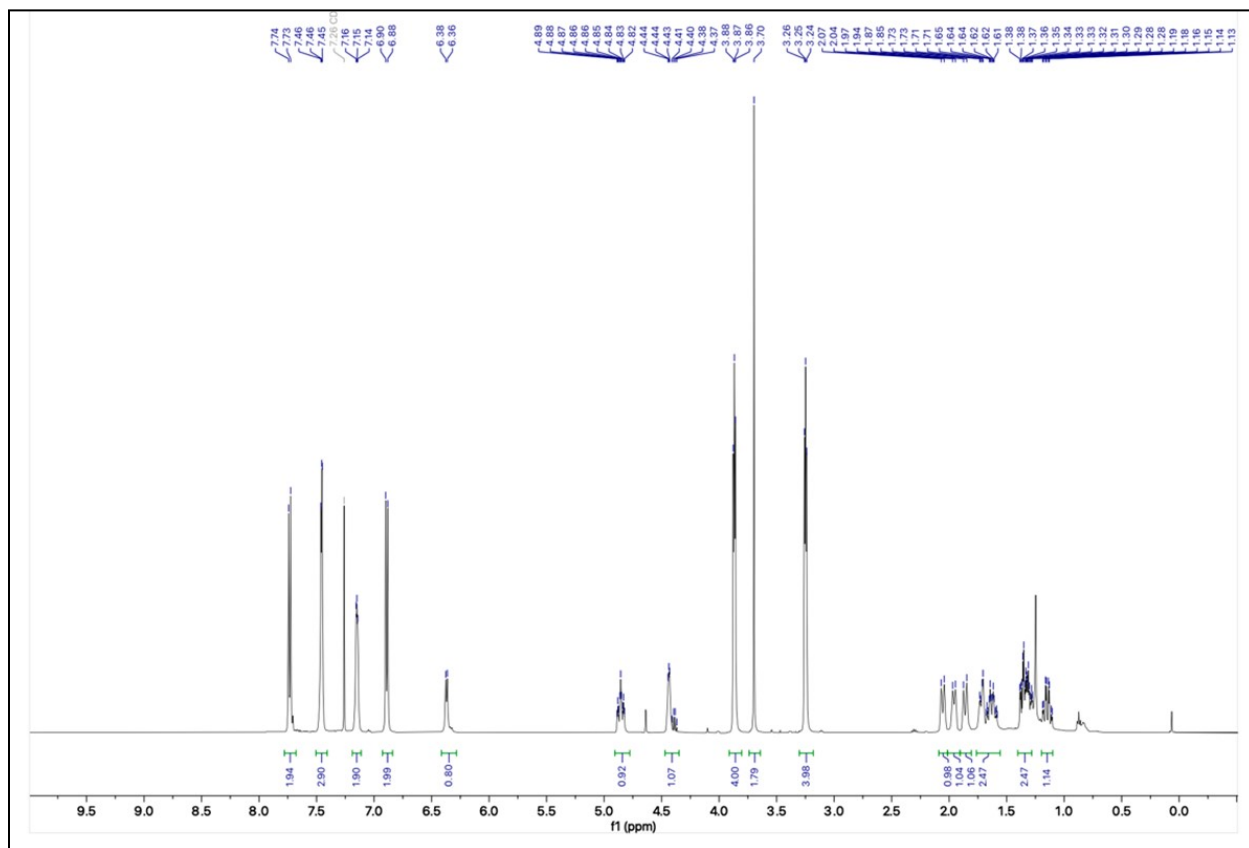


**Figure S3.** Assessment of cytotoxicity for 2G07 and 2F07 in HEK293T cells. Data are presented as mean values  $\pm$  S.E.M. (n = 3).

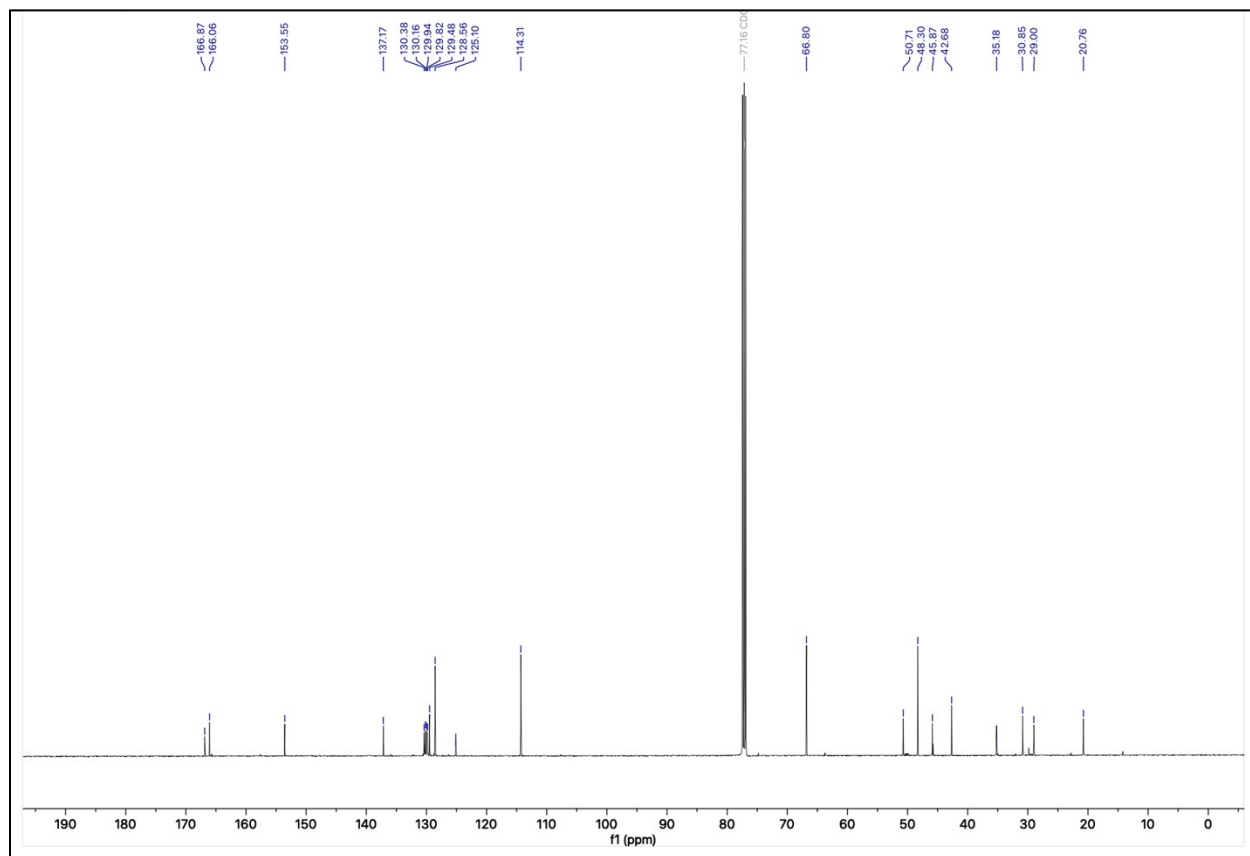


**Figure S4.** Comparison of FKBP12\_NLS degradation induced by KB02-SLF and 2G07-SLF. HEK293T cells stably expressing FLAG-FKBP12\_NLS and HA-DCAF16 were treated with 0.5 or 1  $\mu\text{M}$  of KB02-SLF or 2G07-SLF for 8 hours. The result is representative of two independent experiments with similar results.

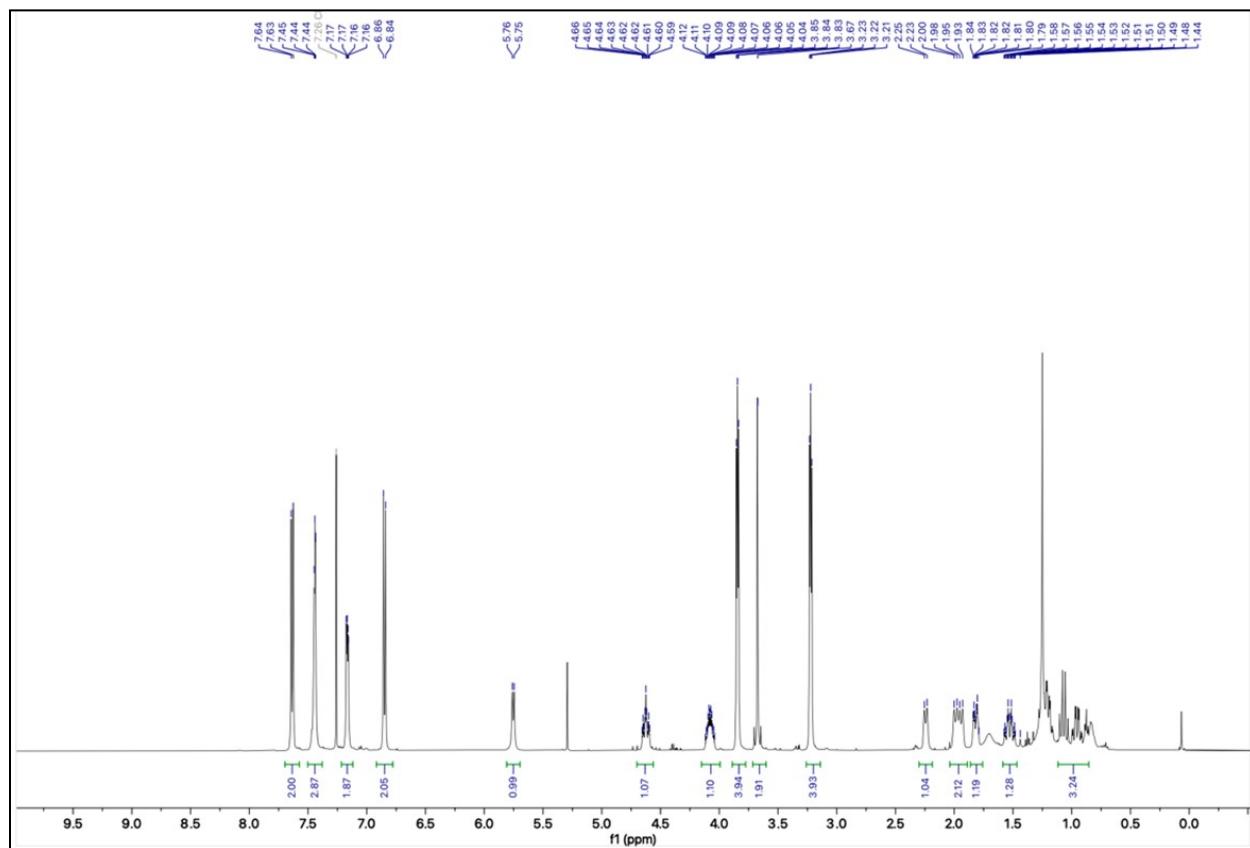
# <sup>1</sup>H-NMR of 2G07



# <sup>13</sup>C-NMR of 2G07

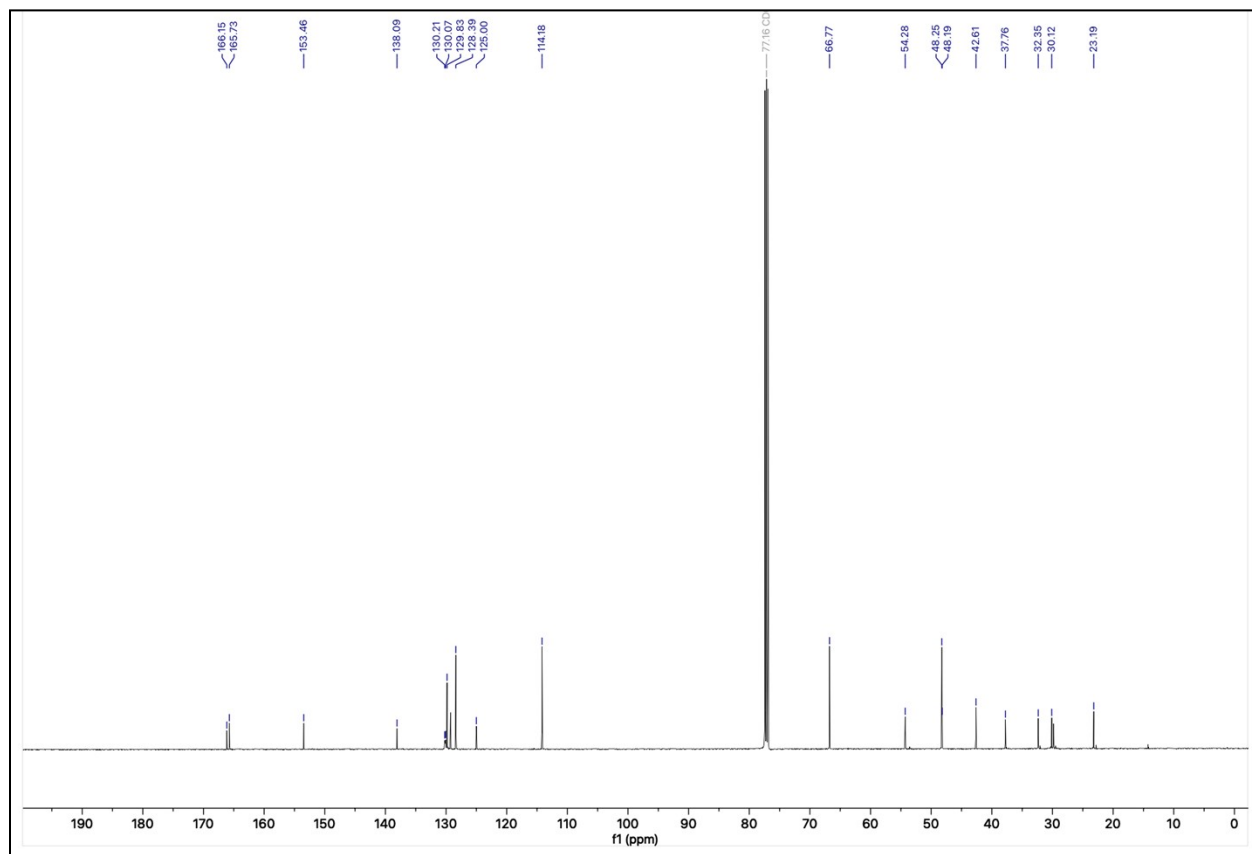


# <sup>1</sup>H-NMR of 2F07

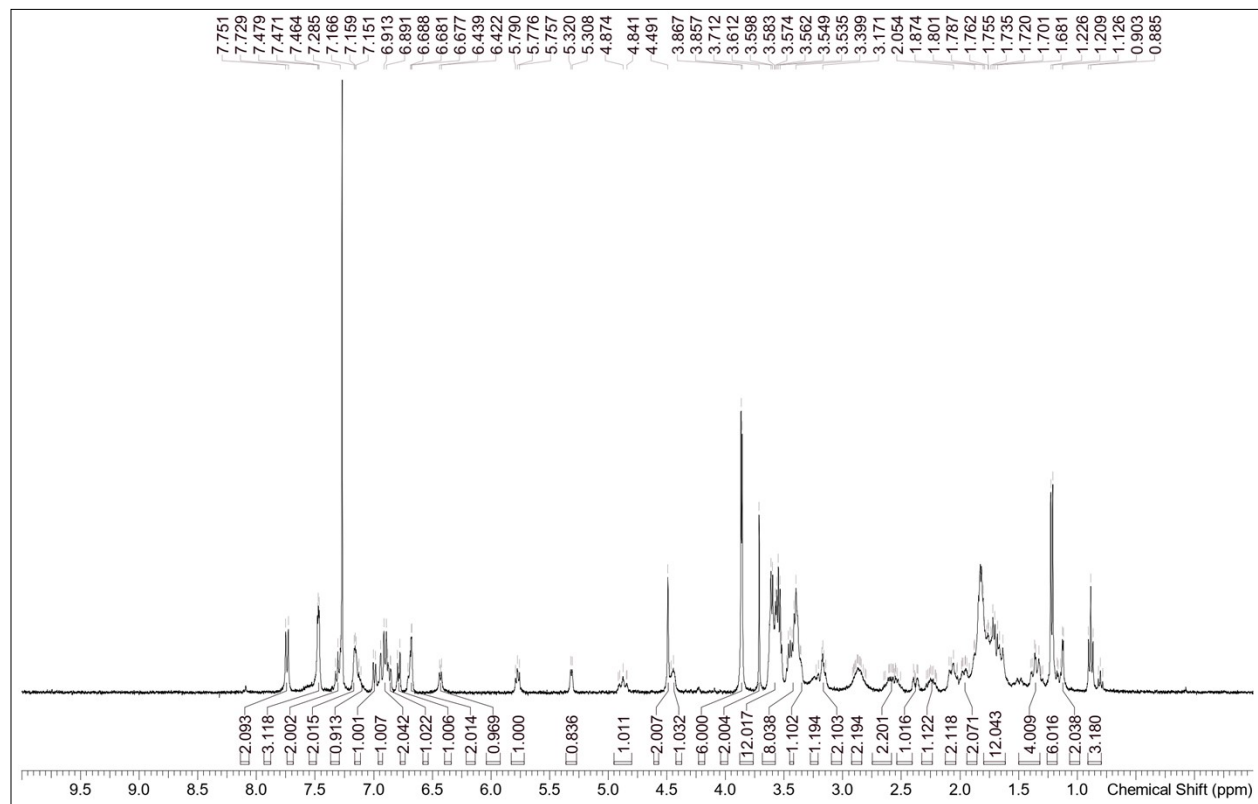




# <sup>13</sup>C-NMR of 2F07



# <sup>1</sup>H-NMR of 2G07-SLF



# <sup>13</sup>C-NMR of 2G07-SLF

