

ARTICLE

Construction of polypyrrole nanoparticles with a rough surface for enhanced chemophotothermal therapy against triple negative breast cancer

Yuanyin Xi,^{†a} Shiqi Zhou,^{†b} Junhui Long,^c Linxi Zhou,^a Peng Tang,^a Hang Qian,^{*d} Jun Jiang,^{*a} Ying Hu^{*a}

1. Supplementary figures

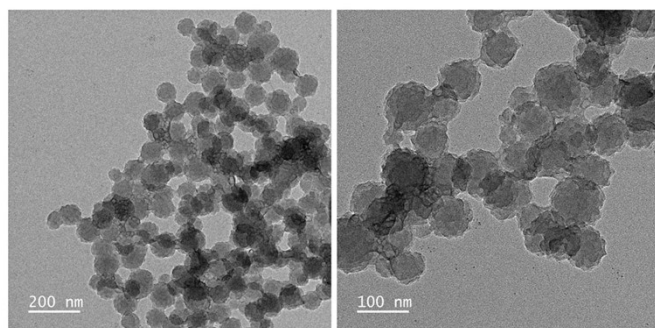


Fig. S1 TEM image of rPPY.

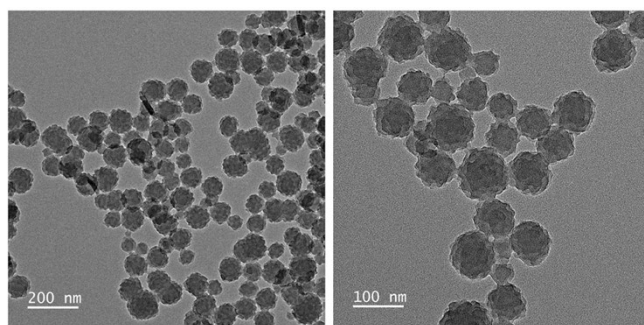


Fig. S2 TEM image of Gem@rPPY.

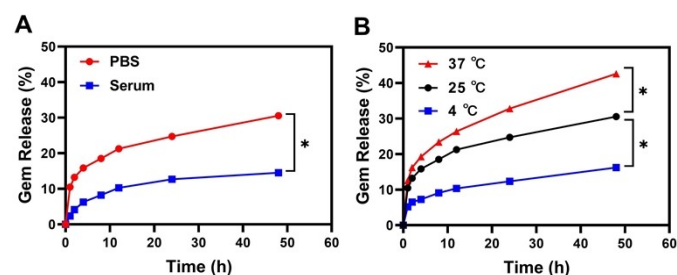


Fig. S3 Gemcitabine release curves of Gem@rPPY under different media (A) and temperatures (B). Data are presented as the means \pm SD ($n = 5$). Statistical analysis was performed by one-way ANOVA. * $P < 0.05$.

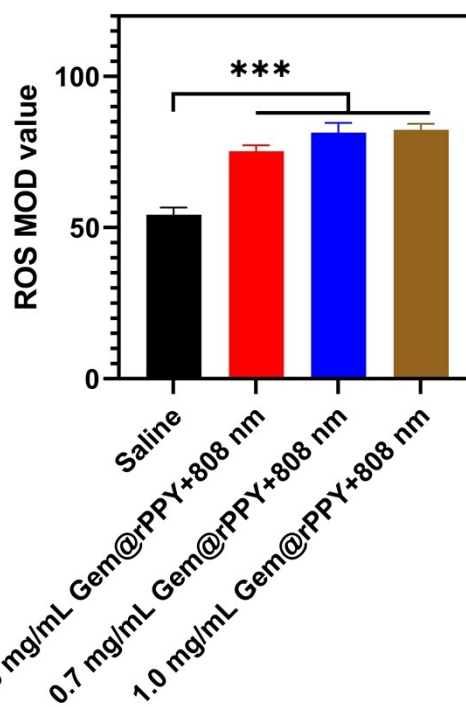


Fig. S4 Semi-quantitative analysis of the confocal images of ROS in 4T1 cells before and after treatment. Data are

Breast Disease Center, Southwest Hospital, Army Medical University, Chongqing 400038, China. Email: totoyingying@hotmail.com, a_jiangjun001@163.com
Department of Plastic, Reconstructive and Cosmetic Surgery, Xinqiao Hospital, Army Medical University, Chongqing 400037, China.

Department of Dermatology, The 958th Army Hospital of the Chinese People's Liberation Army, China.

Department of Respiratory and Critical Care Medicine, Second Affiliated Hospital of Army Medical University, Chongqing 400037, China. E-mail:

hqian@tmmu.edu.cn

[†] These authors contributed equally to this work

presented as the means \pm SD (n = 3). Statistical analysis was performed by one-way ANOVA. *** P < 0.001.

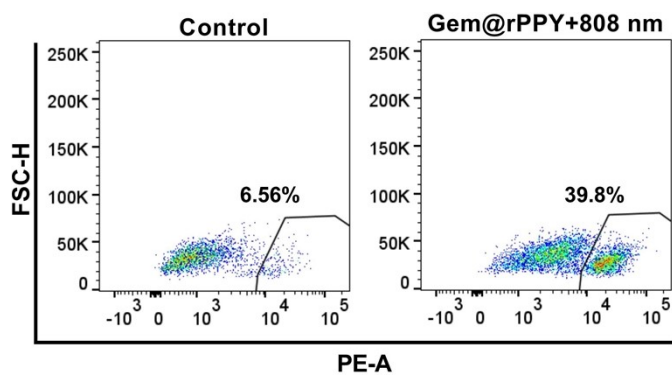


Fig. S5 ROS levels in 4T1 cells after treatment with Gem@rPPY + 808 nm laser, as measured by flow cytometry.