

Figure S1: Topography profile of the MoS₂ NT at position B before and after current injections at position C

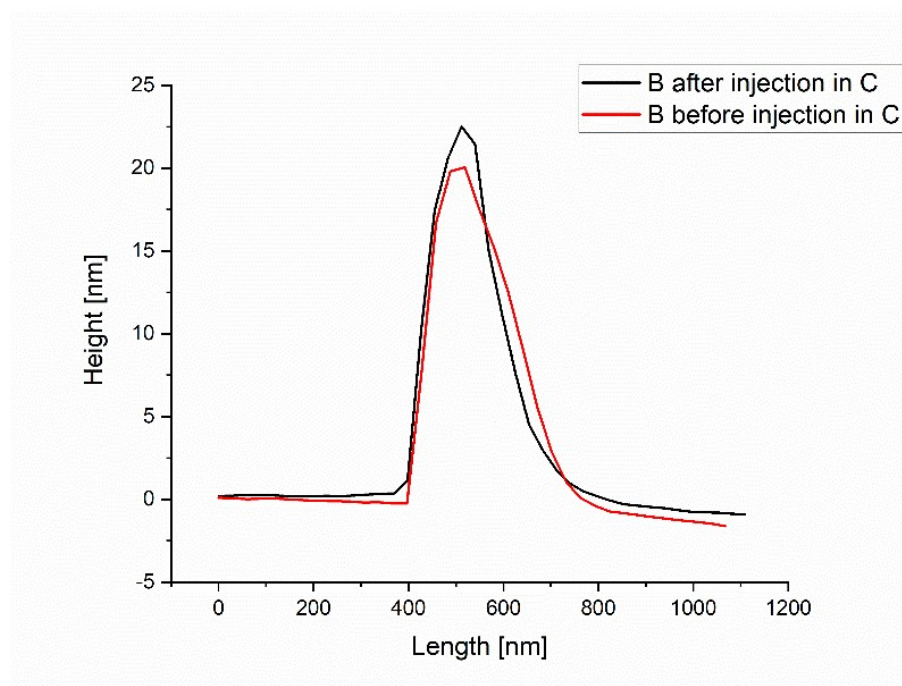


Figure S2: Gradual changes in the shape of the NT (a, b) and its CPD profiles (c, d) at the position B due to injections of holes at 2 V, 4 V, 6 V, and 8 V.

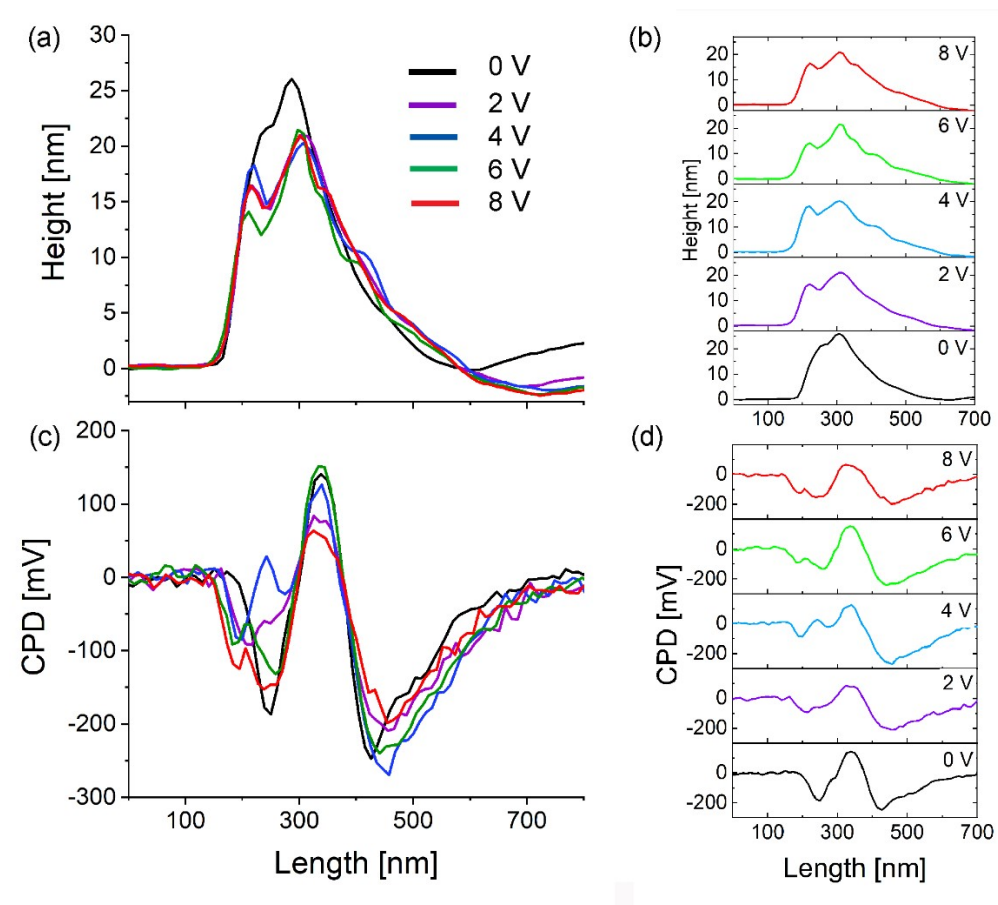


Figure S3: Gradual changes in the shape of the NT (a, b) and its CPD profiles (c, d) at the position B due to injections of electrons at -2 V, -4 V, -6 V, and -8 V.

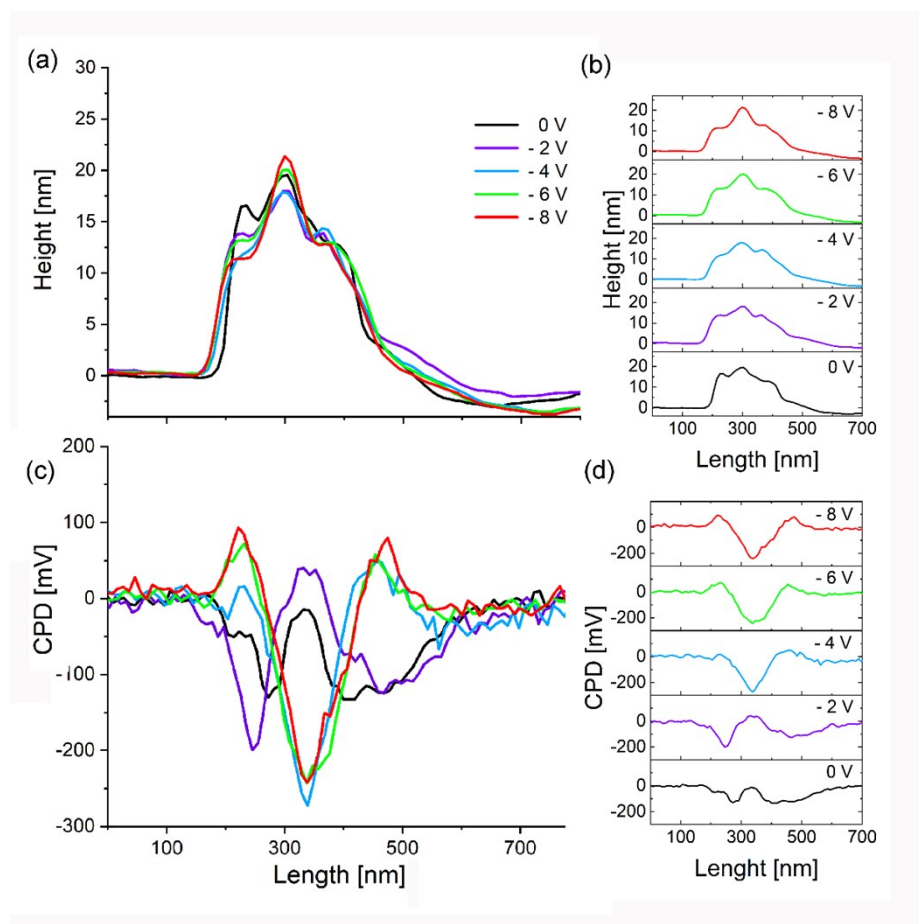


Figure S4: SEM image of the MoS₂ NT taken after charge injections

