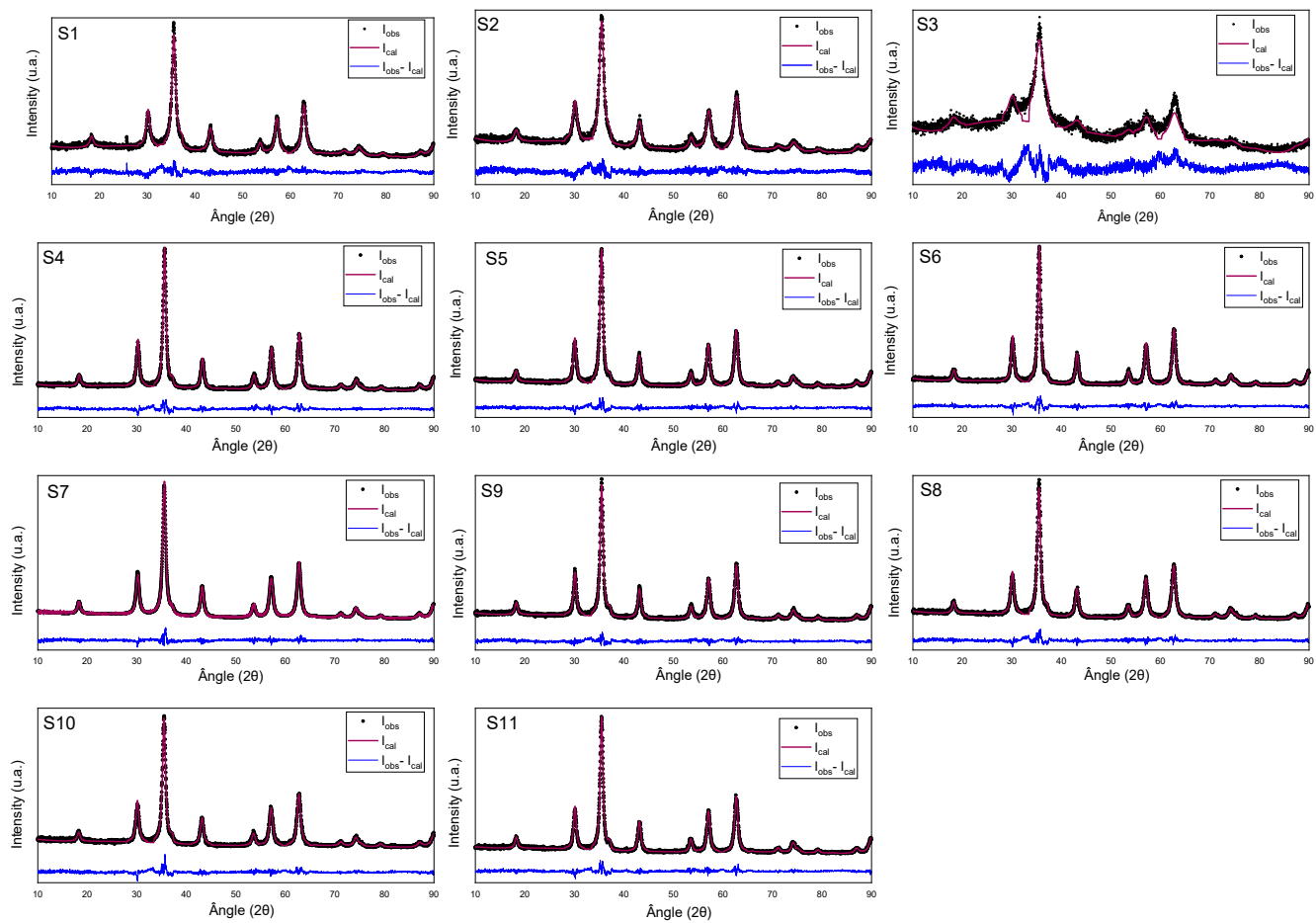
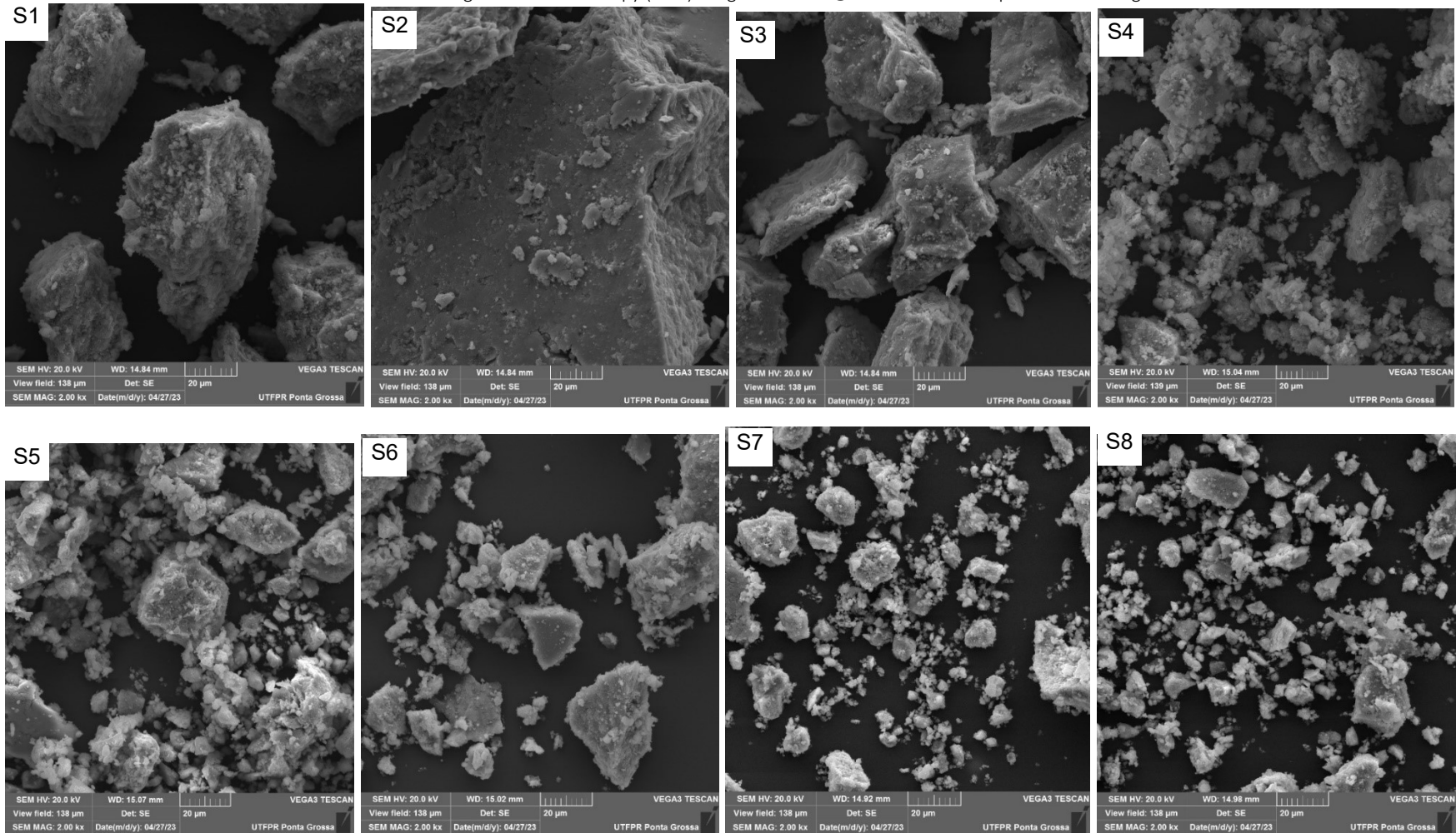


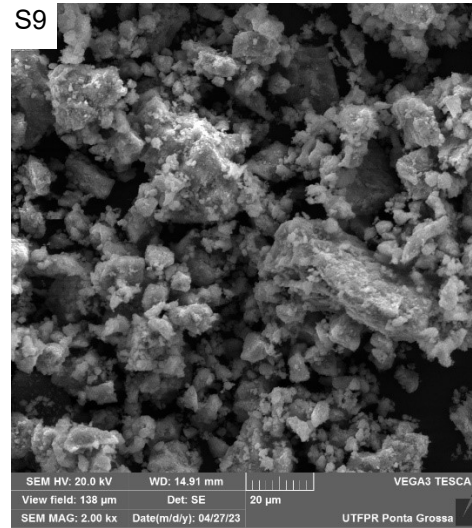
S1: XRD of Fe_3O_4 @maltodextrin nanoparticles refined by the Rietveld method.



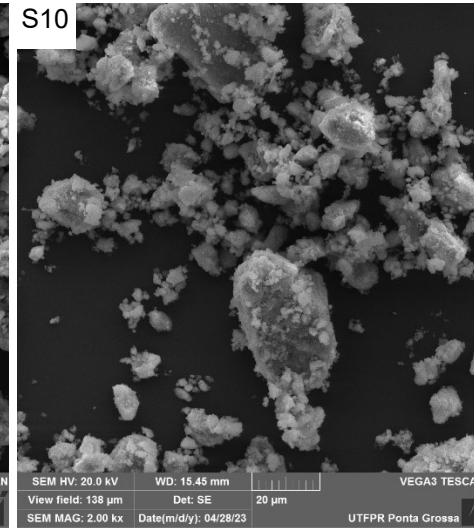
S2: Scanning electron microscopy (SEM) images of Fe₃O₄@maltodextrin nanoparticles and magnetite.



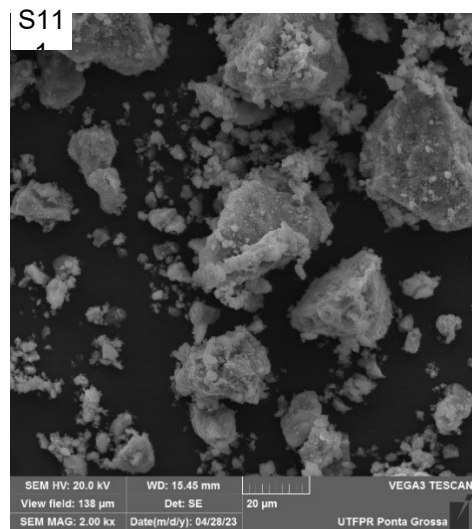
S9



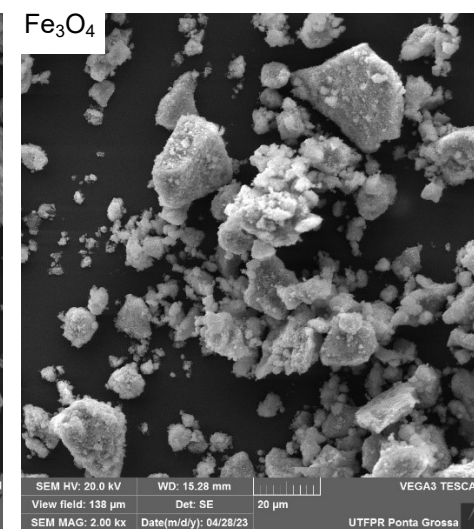
S10



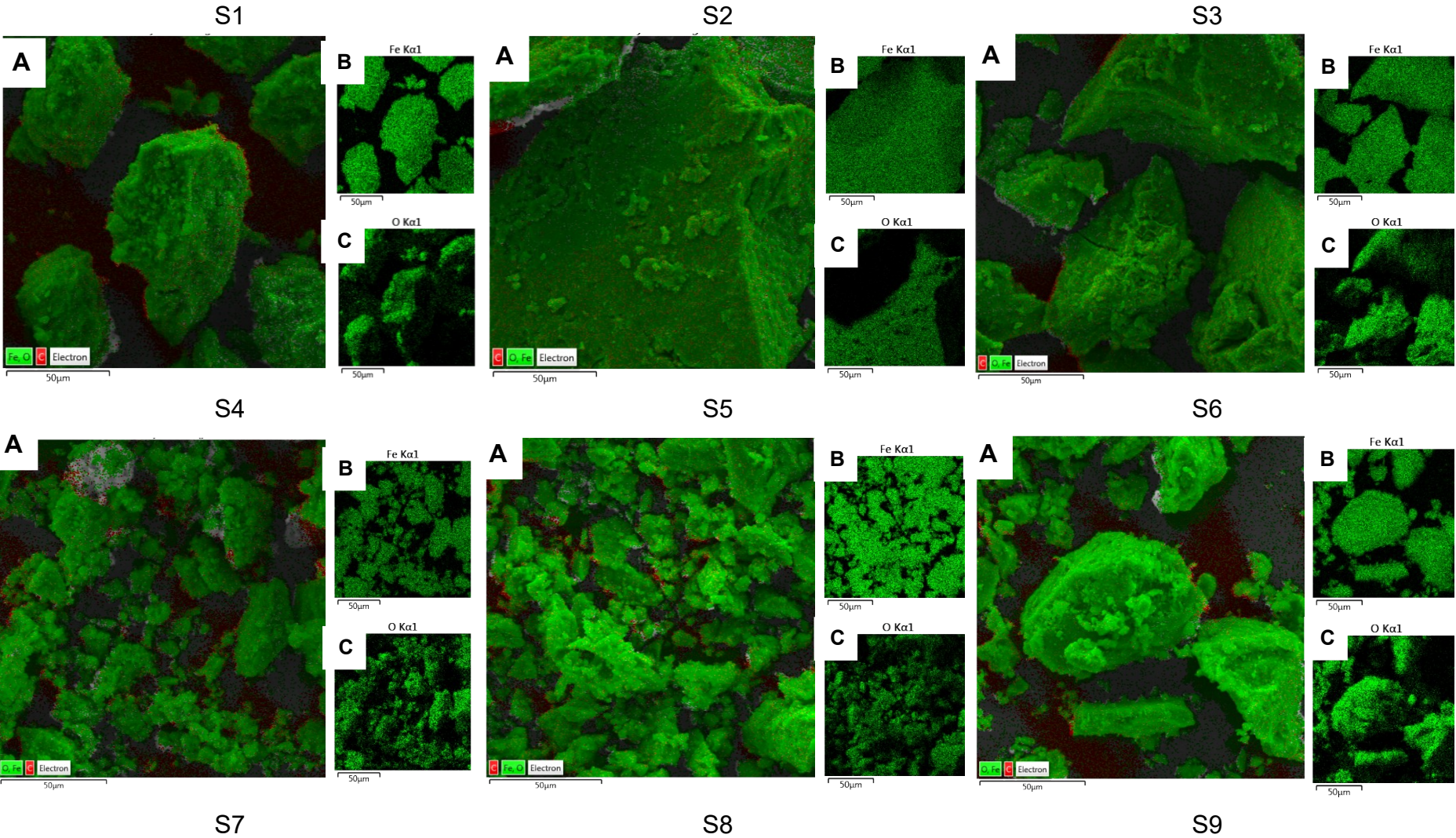
S11



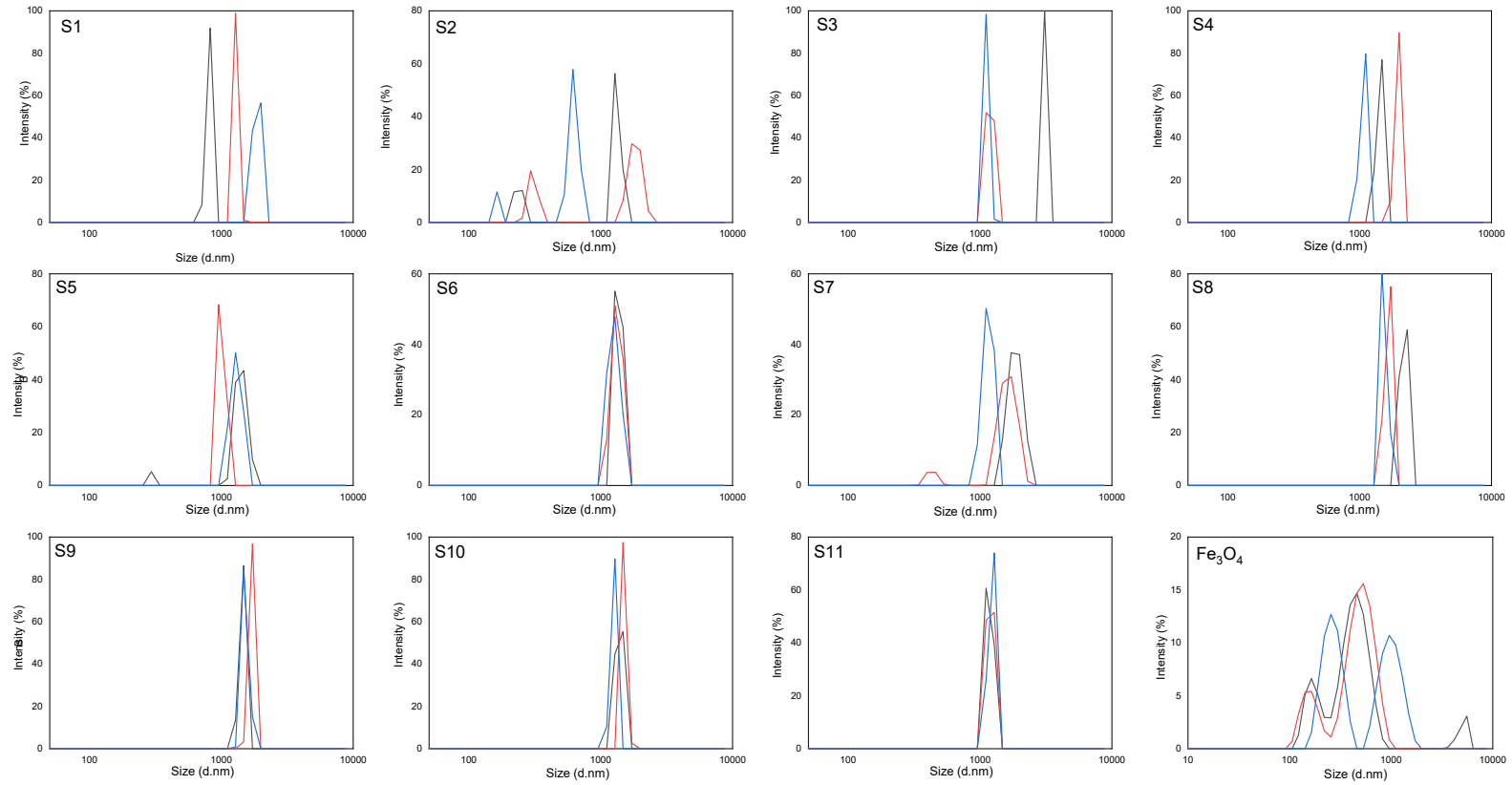
Fe₃O₄



S3: SEM/EDS analysis images: (A) SEM of the sample with nominal magnification of 2kx; (B) Fe map and (C) O map, obtained via EDS from Fe₃O₄@maltodextrin nanoparticles



S4: Size distribution of Fe₃O₄@maltodextrin nanoparticles in water, in triplicate.



S5: Magnetization curves of Fe₃O₄@maltodextrin and magnetite nanoparticles under the action of external magnetic fields close to zero

