

Electronic supplementary information (ESI)

Room temperature nanoarchitectonics of ultrafine SnO₂ and Cu doped SnO₂ crystallites for advanced H₂S sensing

Atom Rajiv Singh,^a Manas Srivastava,^a K. G. Girija¹,^a R. S. Ningthoujam^{a,b} and A. K.

Tyagi^{a,b}

^a*Chemistry Division, Bhabha Atomic Research Centre, Mumbai 400085*

^b*Homi Bhabha National Institute, Anushaktinagar, Mumbai 400094*

Authors to whom correspondence should be addressed: rsn@barc.gov.in (R. S. Ningthoujam)

and aktyagi@barc.gov.in (A. K. Tyagi)

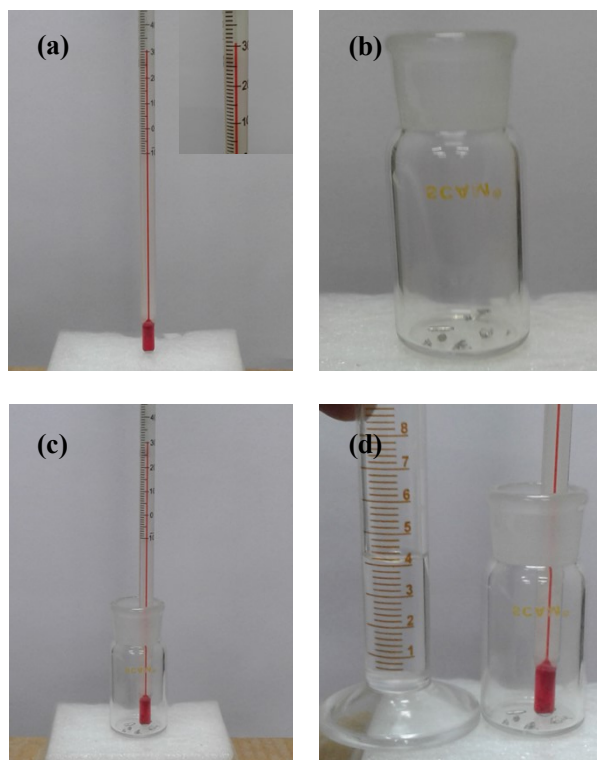


Fig. S1 The experimental set up of 150 mg of Sn in 4 ml of concentrated HNO_3 in a weighing bottle having 25 ml capacity.

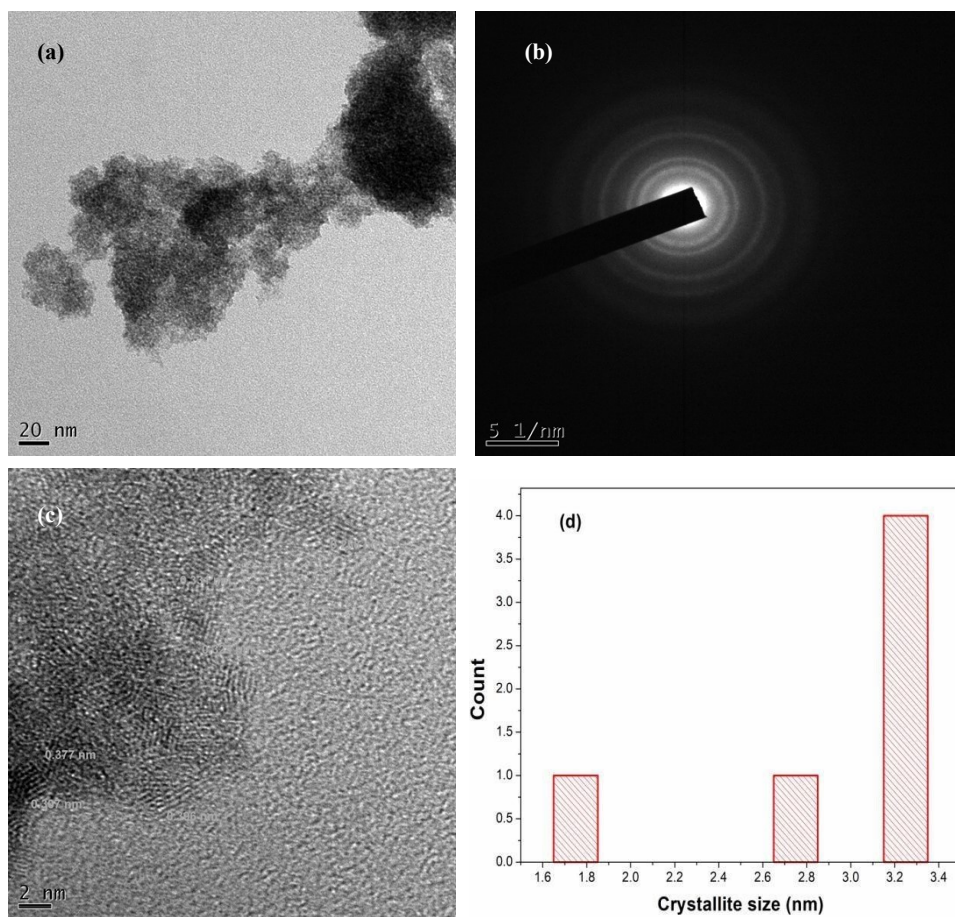


Fig. S2 (a) TEM image of sample SnO₂:3Cu, (b) SAED pattern, (c) HRTEM, and (d) Crystallite size (nm) distribution.