

# **Supplementary Material (ESI) for New Journal of Chemistry**

## **Effect of fuel dosage in self-propagation combustion: Evolution of BiOCl to BiOCl/Bi<sub>24</sub>O<sub>31</sub>Cl<sub>10</sub> heterojunction enriched with oxygen vacancies**

Han Liu, Wenjun Zhang, Meng Chen\*

Department of Materials Science, Fudan University, Shanghai, 200433, PR China

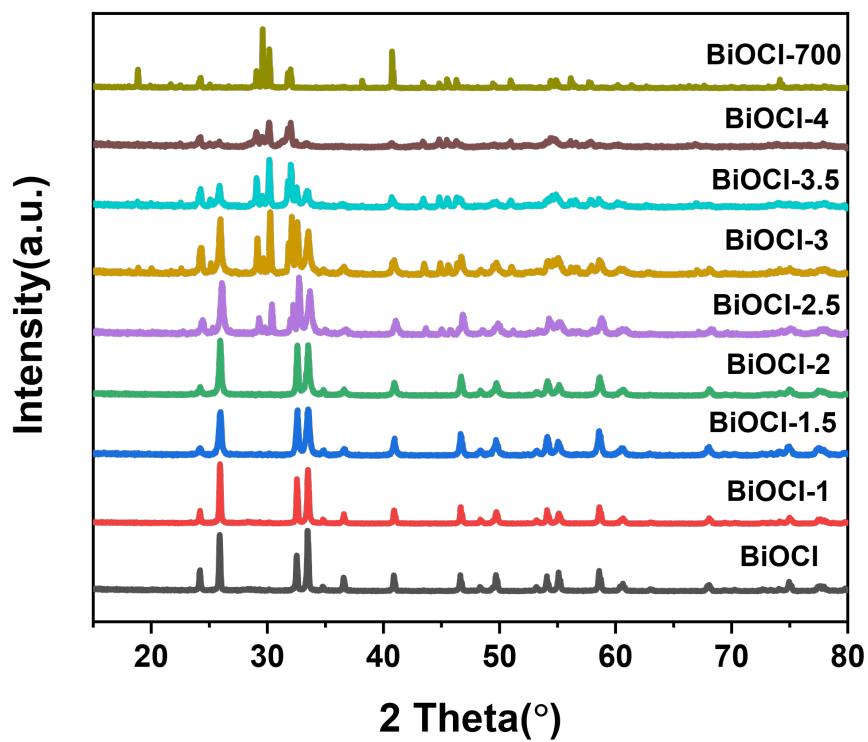


Fig S1. XRD patterns prepared with different glycine dosages

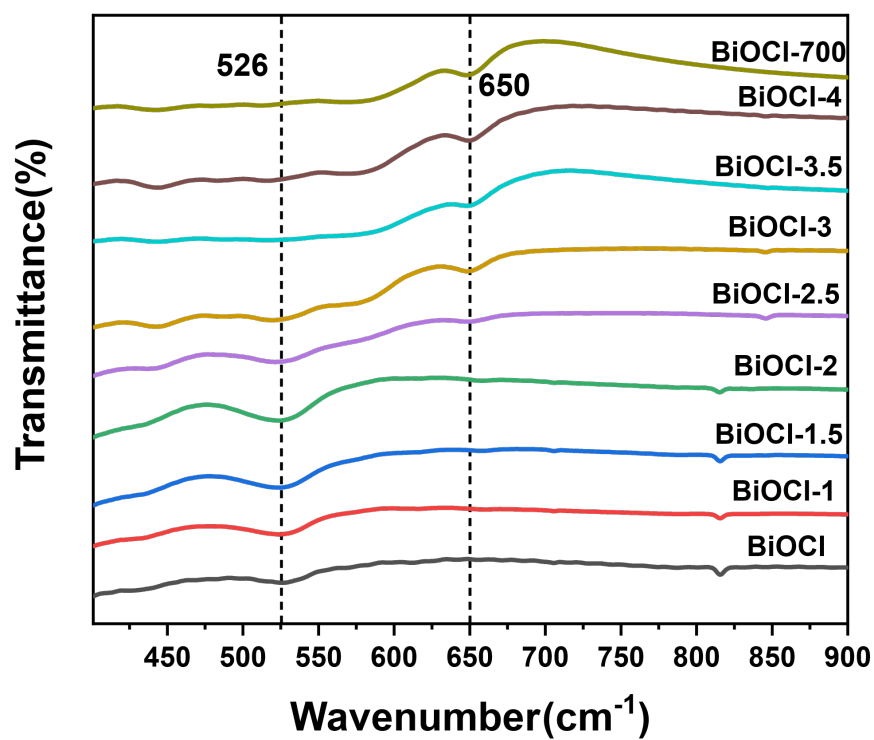


Fig S2. FTIR spectra of the samples prepared with different glycine dosages

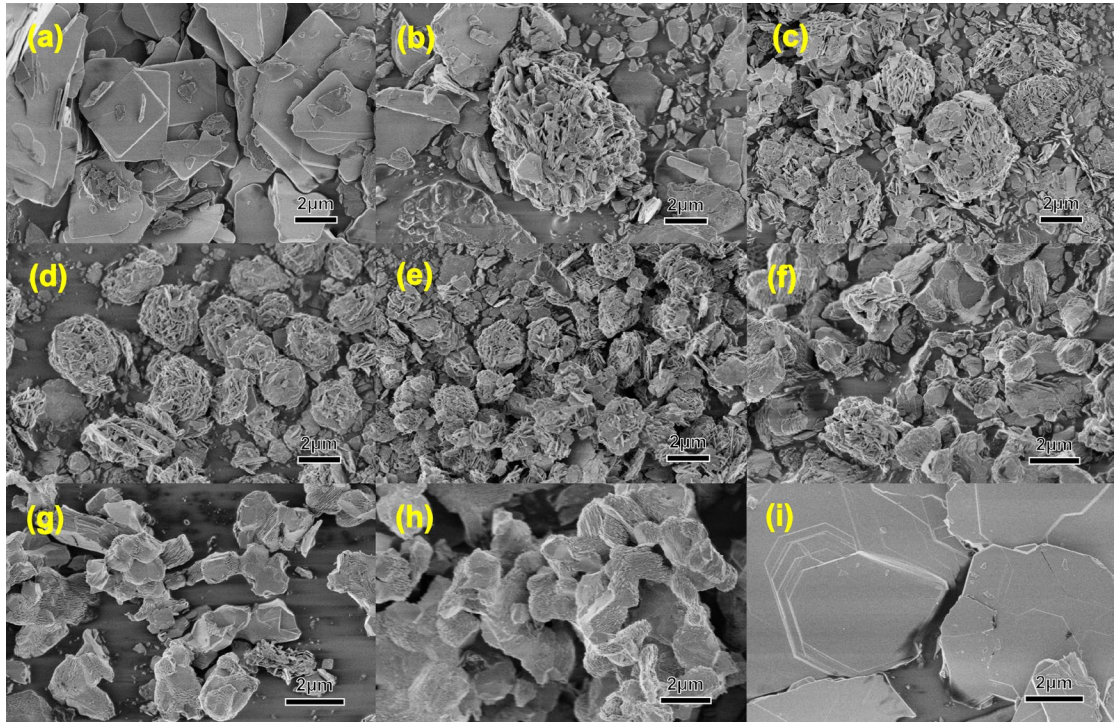


Fig S3. SEM images of the samples prepared with different glycine dosages (a) BiOCl, (b) BiOCl-1, (c) BiOCl-1.5, (d) BiOCl-2, (e) BiOCl-2.5, (f) BiOCl-3, (g) BiOCl-3.5, (h) BiOCl-4, and (i) BiOCl-700

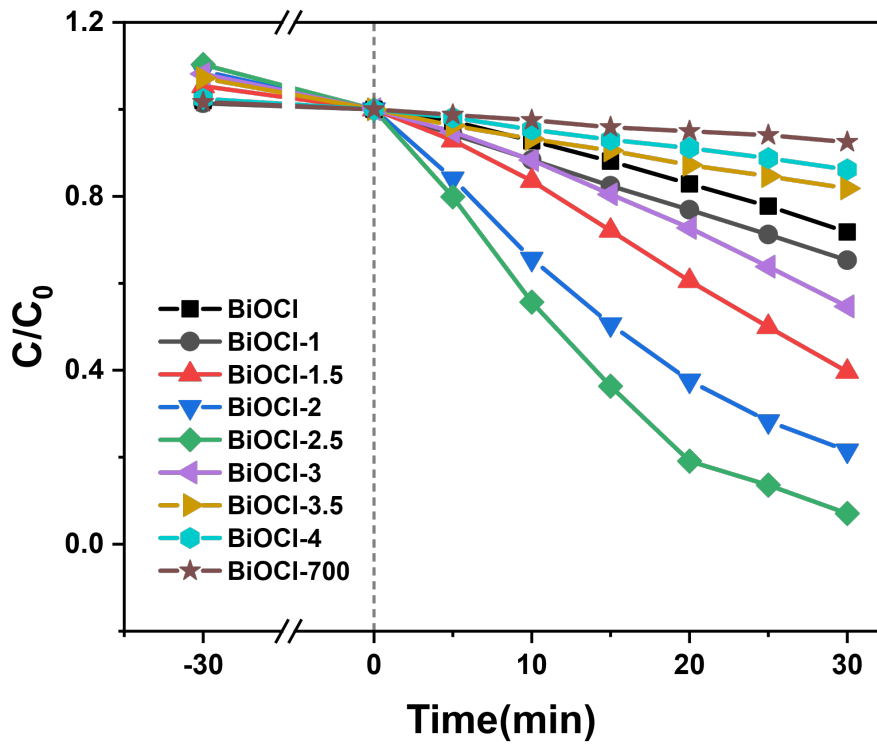


Fig S4. Photocatalytic degradation efficiency curves of RhB by the samples prepared with different glycine dosages

S1 Table First-order kinetic constant of as-prepared samples

	BiOCl	BiOCl-1	BiOCl-1.5	BiOCl-2	<b>BiOCl-2.5</b>	BiOCl-3	BiOCl-3.5	BiOCl-4	BiOCl-700
K/min <sup>-1</sup>	0.0111	0.0141	0.0310	0.0525	<b>0.0898</b>	0.0199	0.0066	0.0050	0.0026
R square	0.982	0.997	0.972	0.995	<b>0.982</b>	0.972	0.999	0.997	0.995

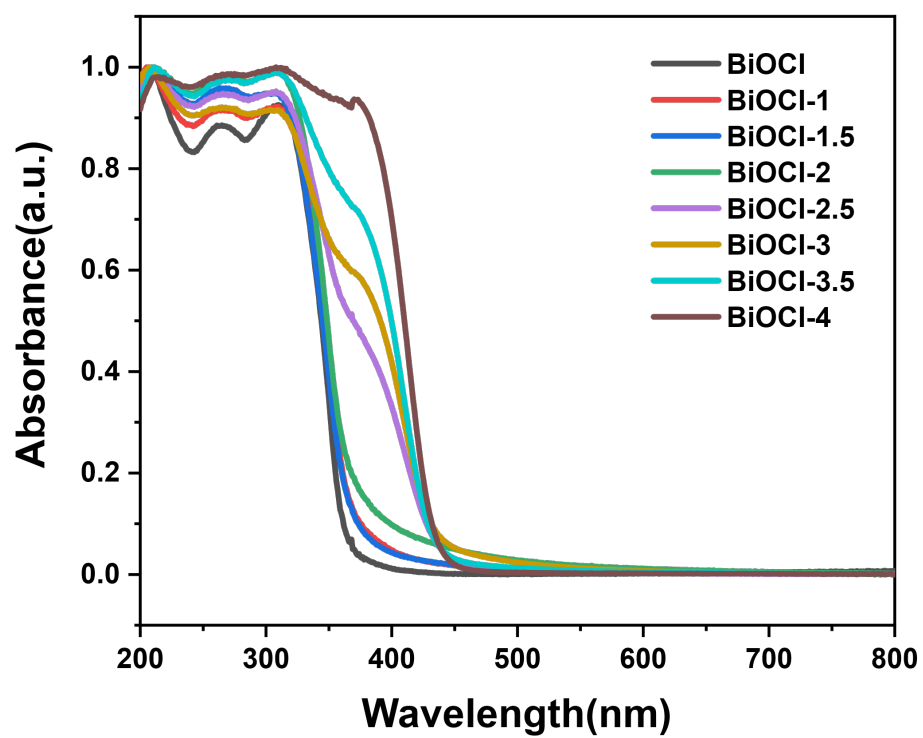


Fig S5. The UV-vis diffuse reflectance spectra of the samples prepared with different glycine dosages