

## Supplementary File

### Hierarchical NiCo-LDH Layered Composite on PANI coated Ni Foam for Highly Efficient Supercapattery Applications

Megha Prajapati<sup>a,b</sup>, Chhaya Ravi Kant<sup>a\*</sup>, Aasim Hussain<sup>c</sup>, Mohan V. Jacob<sup>b</sup>

<sup>a</sup>Department of Applied Sciences and Humanities, Indira Gandhi Delhi Technical University for Women, Delhi 110006, India

<sup>b</sup>Electronics Materials Lab, College of Science and Engineering, James Cook University, Townsville, QLD 4811, Australia

<sup>c</sup> Department of Physics, Jamia Millia Islamia, New Delhi 110025, India

\*Corresponding Author-[chhayaravikant@igdtuw.ac.in](mailto:chhayaravikant@igdtuw.ac.in)

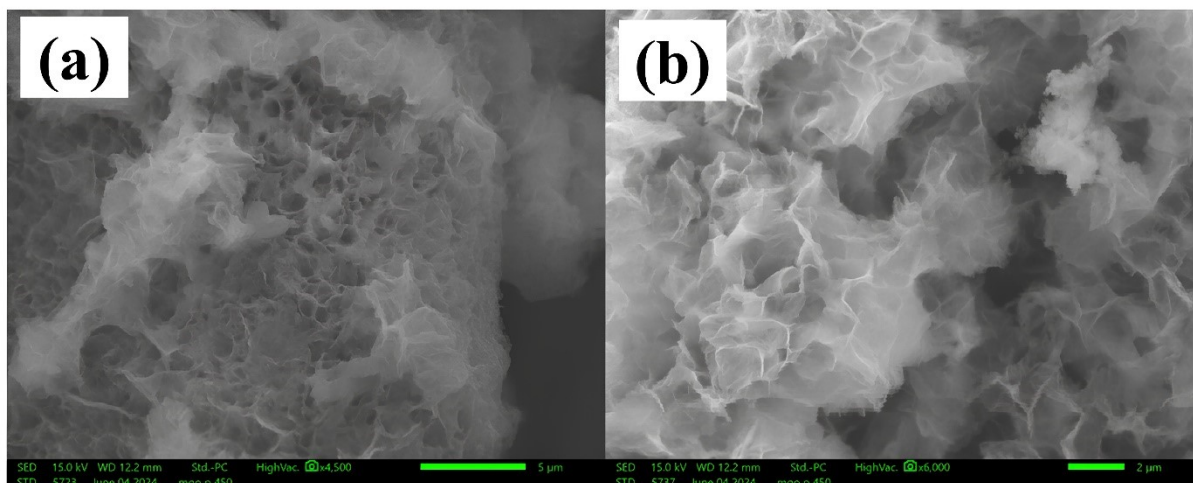


Figure S1: SEM micrograph of NiCo LDH/NF sample

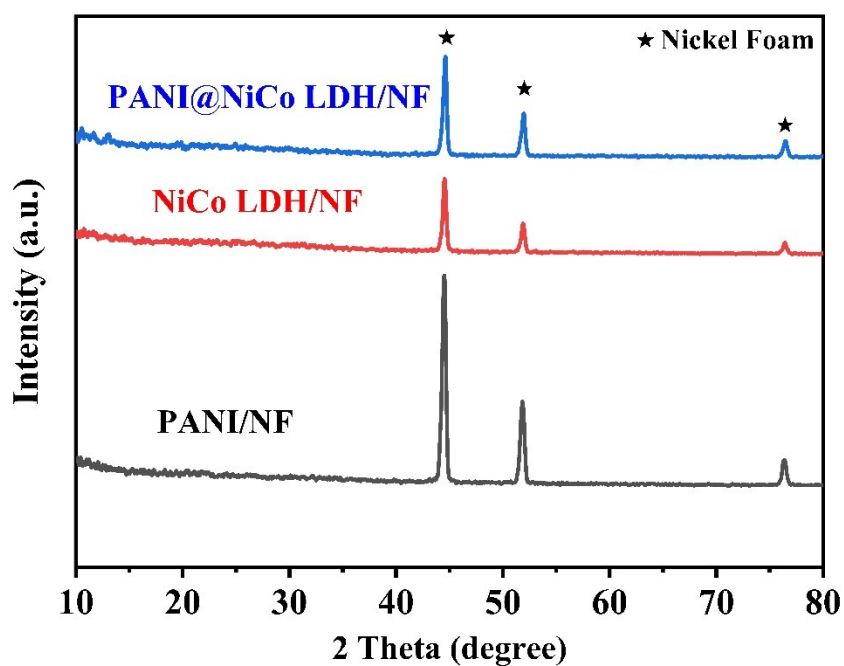


Figure S2: XRD curve for PANI, NiCo LDH/NF, and PANI@NiCo LDH/NF sample

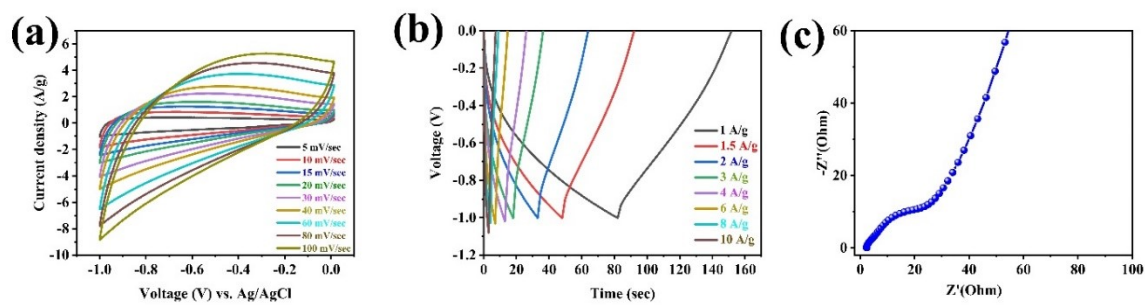


Figure S3: (a) CV; (b) GCD; (c) EIS curve for rGO sample

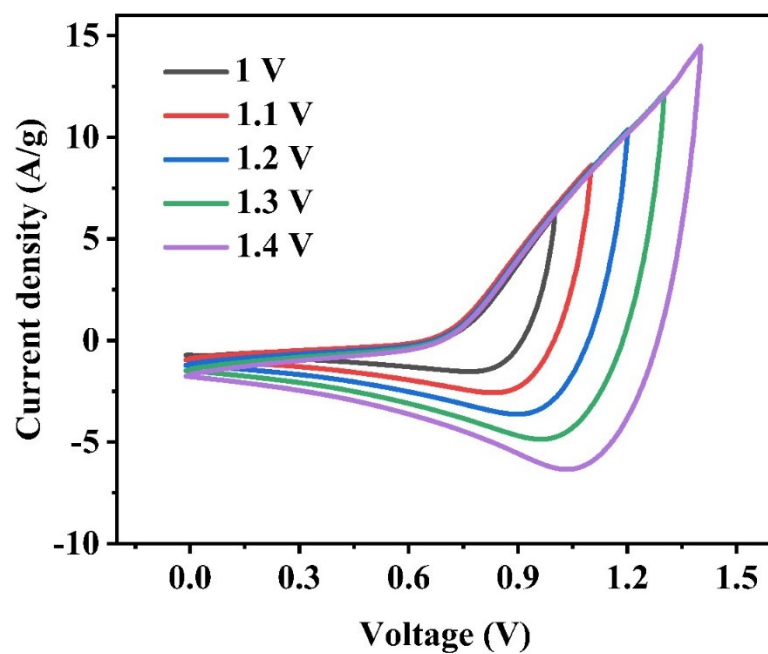


Figure S4: CV of PANI@NiCo LDH/NF//rGO device at different potential window