

## Nanoengineering Steel's Durability: Creating Gradient Nanostructured Spheroidal Carbides and Lath-Shaped Nano-Martensite via Ultrasonic Shot Peening

Fei Yin<sup>a,b,c,\*</sup>, Yuxuan Yi<sup>a,b,c</sup>, Chang Yang<sup>a,b,c</sup>, & Gary J Cheng<sup>d,e,\*</sup>

*a* Hubei Longzhong Laboratory, Xiangyang, 441000, China

*b* Hubei Key Laboratory of Advanced Technology for Automotive Components, Wuhan University of Technology, Wuhan, 430070, China

*c* School of Automotive Engineering, Wuhan University of Technology, Wuhan, 430070, China

*d* School of Industrial Engineering, Purdue University, West Lafayette, IN 47906, USA

*e* School of Materials Engineering, Purdue University, West Lafayette, IN 47906, USA

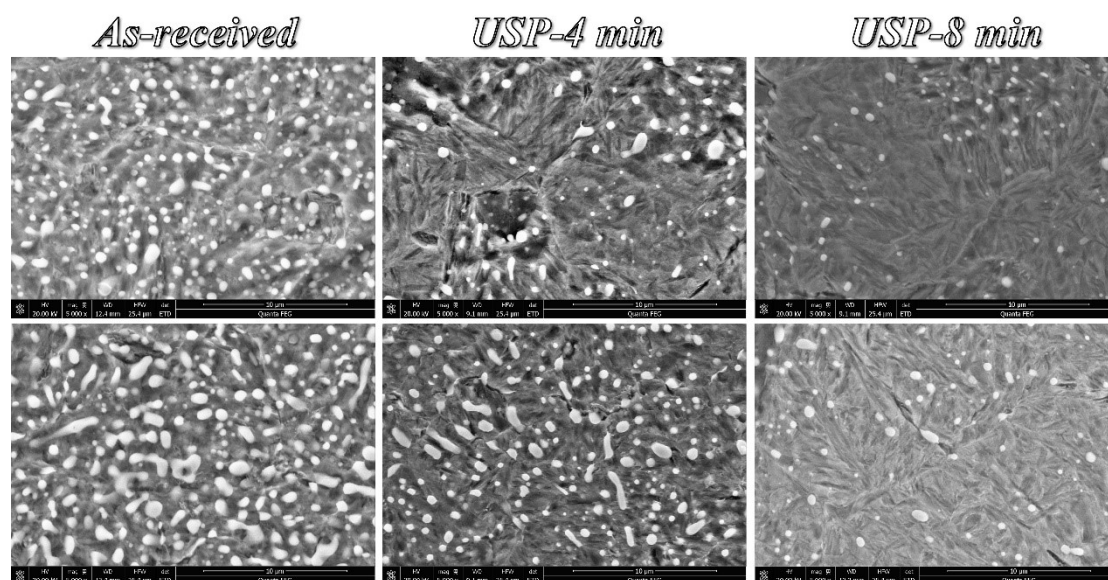


Figure S1 The SEM characterizations of the as-received and ultrasonic shot peened GCr15 bearing steel sample at its topmost peened surface.

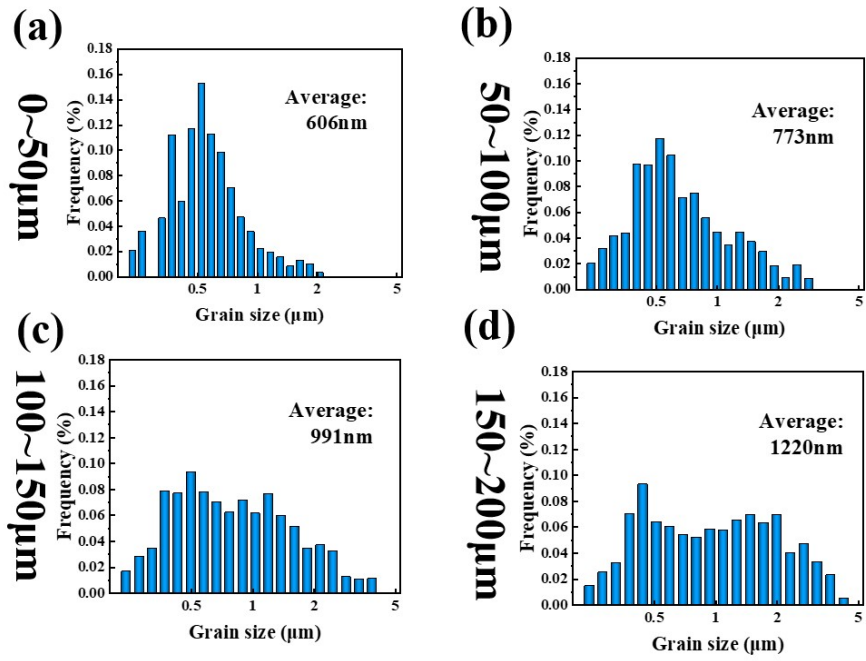


Figure S2 Statistical analysis of the grain size with respect to the depth profile for the USPed GCr15 bearing steel with the peening duration of 4 min.