

1

Supporting Information

2 Targeted Delivery of Cytotoxic Proteins via Lipid-based Nanoparticles to 3 Langerhans cells

**4 Nowras Rahhal^{a, b, c}, Mareike Rentzsch^{a, b, c}, Saskia Seiser^d, Christian Freystätter^e,
5 Adelheid Elbe- Bürger^d, Christoph Rademacher^{a, b}**

6 *a. Department of Pharmaceutical Sciences, University of Vienna, Vienna, Austria*

7 *b. Department of Microbiology, Immunology and Genetics University of Vienna, Max F. Perutz Labs, Vienna, Austria*

8 *c. Vienna Doctoral School of Pharmaceutical, Nutritional and Sport Sciences, University of Vienna, Vienna, Austria*

9 *d. Department of Dermatology, Medical University of Vienna, Vienna, Austria*

10 *e. Department of Plastic and Reconstructive Surgery, Medical University of Vienna, Vienna, Austria*

11

12

13

14

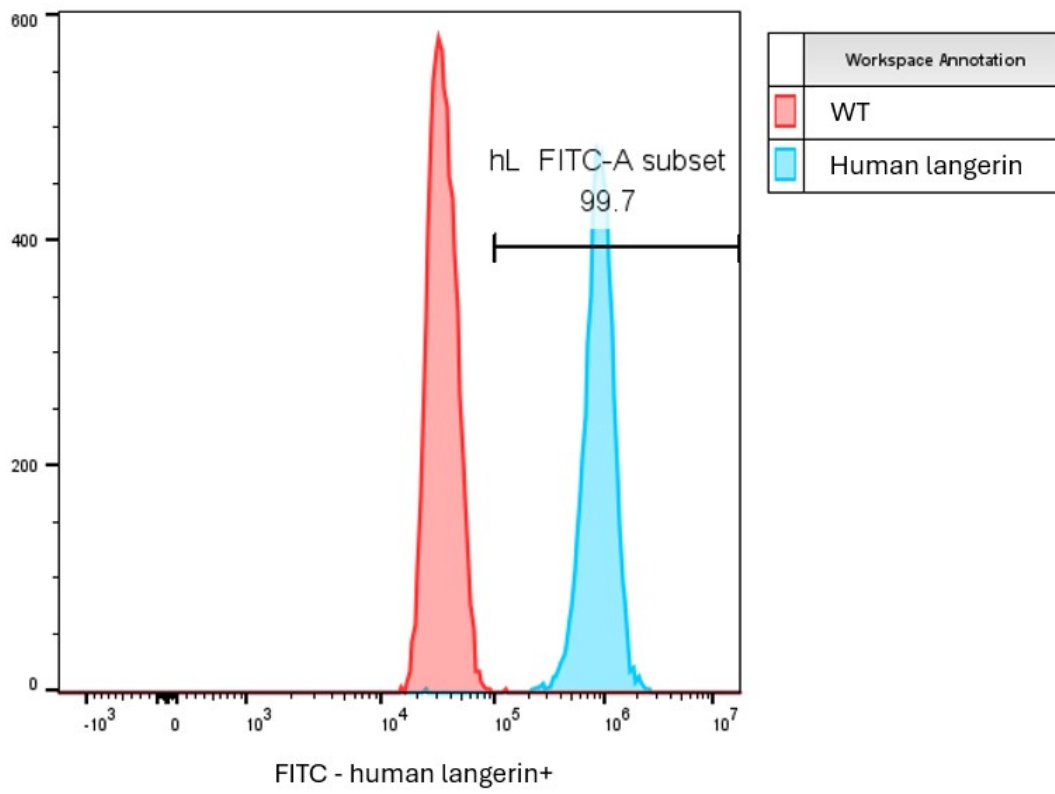
15

16

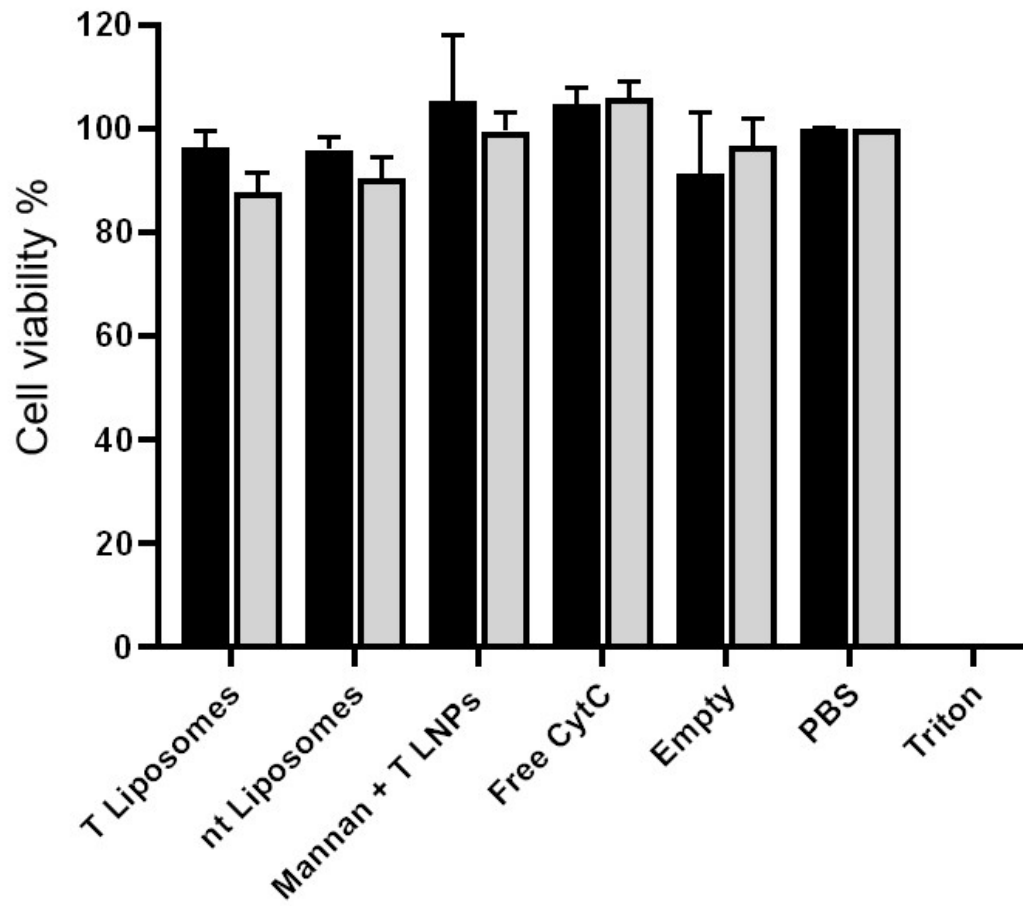
17

18

19



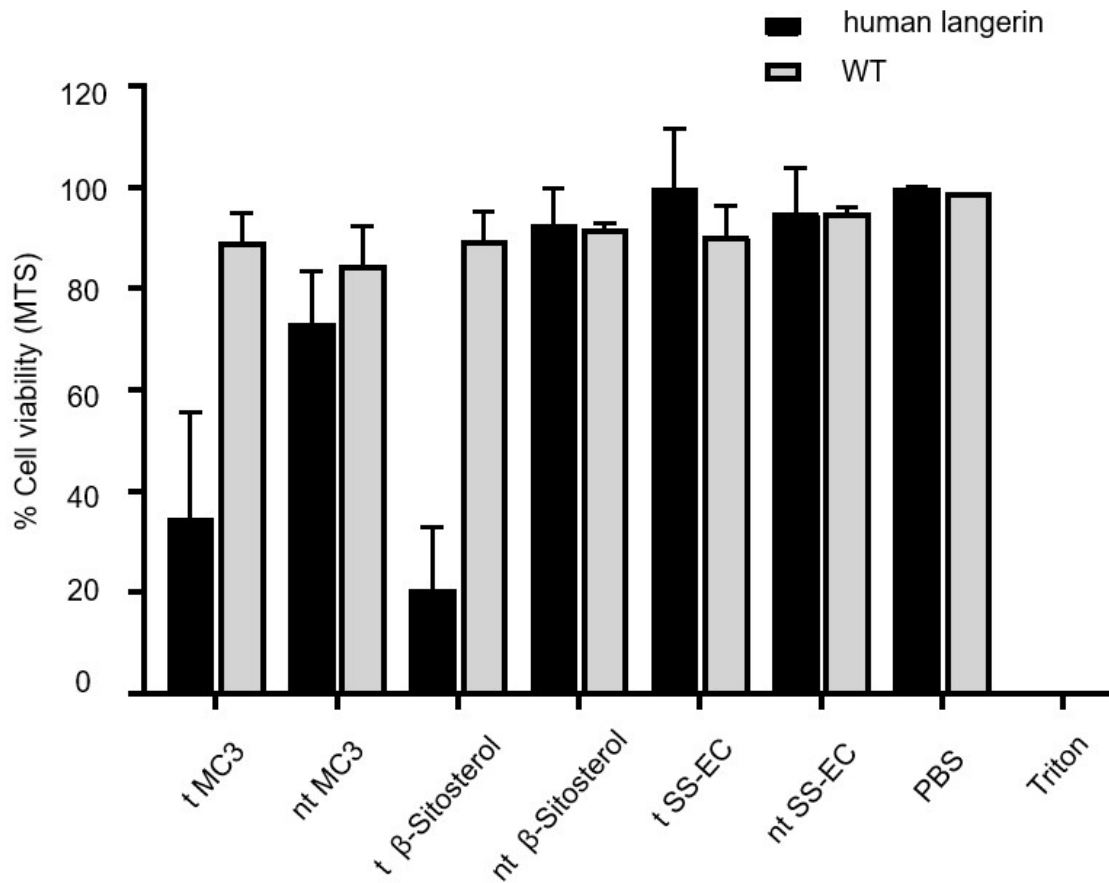
20
21 **Figure S1. Representative staining for human langerin expression on Raji cells as analyzed by flow cytometry.**



22

23 **Figure S2 *In-vitro* cell proliferation on wild-type (WT) and human langerin (hL) expressing Raji cells.** MTS assay for cells
 24 treated with t and nt liposomes encapsulating Cyt C (25 µg/mL of the protein loaded in the nanoparticles), Cyt C protein
 25 (250 µg/mL of the free protein), empty targeted (et) LNPs, for 24 hours.

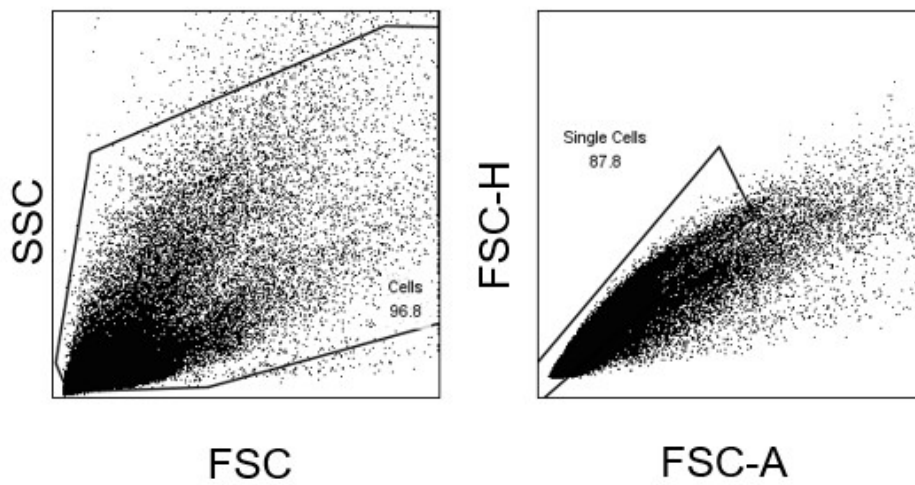
26



27

28 **Figure S3** *In-vitro* cell proliferation assay (MTS) for altered composition of LNPs on WT and hL expressing Raji cells. values
 29 in this graph are from one representative of three independent measurements. Cells were treated with 25 µg/mL of the
 30 protein loaded in the nanoparticles Cyt C for 24 hours.

31

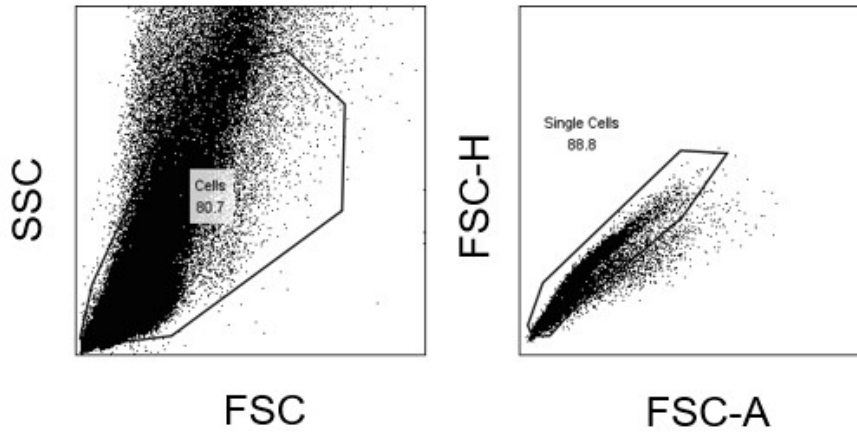


32

33

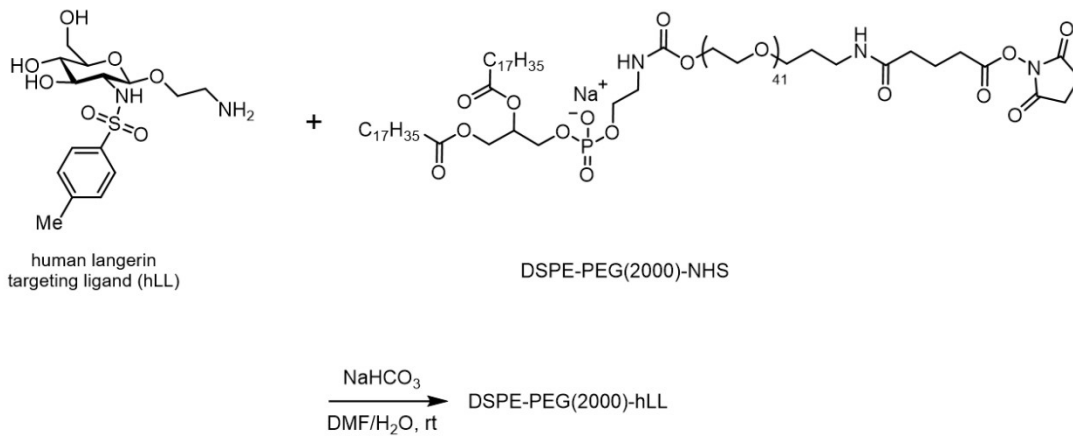
34 **Figure S4 Representative dot plots for the gating of epidermal single cell suspensions** prepared from the skin of human
35 langerin DTR C56BL/6 mice (n=3), identifying cells based on forward scatter (FSC) and side scatter (SSC) to select single cells.

36



37

38 **Figure S5 Representative dot plots for the gating of epidermal single cell suspensions** prepared from healthy adult human
39 skin (n=3), identifying single cells based on forward scatter (FSC) and side scatter (SSC) to select single cells.



40

41 **Figure S6.** Schematic overview of the conjugation strategy for the human langerin targeting ligand (hLL) to DSPE-PEG-NHS

42

43

44

45

46

47

48

Table 1 Characterization of lipid-based nanoparticles

49

50	Saporin	Size (nm)	Zeta potential (mV)	PDI	Loading efficiency % (starting from 1 mg/ml)
51	t LNPs	129	-14.6	0.2	31.9
52	nt LNPs	126	-15.6	0.22	21.9
	t liposomes	112	-8.2	0.29	34.8
	nt liposomes	142	-6.6	0.12	33.4
	Cyt C	Size (nm)	Zeta potential (mV)	PDI	Loading efficiency % (starting from 2.5 mg/ml)
	t LNPs (MC3)	136	-12.6	0.18	6.5
	nt LNPs (MC3)	124	-12.3	0.16	6.9
	t LNPs (SS)	169	-12.6	0.08	3.7
	nt LNPs (SS)	184	-11.2	0.10	3.4
	t LNPs (β -sitosterol)	174	-13.6	0.11	3.5
	nt LNPs (β -sitosterol)	198	-12.2	0.11	3.5
	t liposomes	91	-9.7	0.13	3.4
	nt liposomes	105	-11	0.1	3.4
	et LNPs	116	n/a	0.2	