

Supplementary information for

Highly specific aptamer for SARS-CoV-2 spike protein from the authentic strain

Maria G. Khrenova ^{a,b*‡}, Lyudmila Nikiforova ^{a‡}, Fedor Grabovenko ^a, Nadezhda Orlova ^c,
Maria Sinegubova ^a, Denis Kolesov ^c, Elena Zavyalova ^a, Maksim F. Subach ^a, Igor V.
Polyakov ^a, Timofei Zatzepin ^a, Maria Zvereva ^a

^a Chemistry Department, Lomonosov Moscow State University, 119991 Moscow, Russia.

^b Bach Institute of Biochemistry, Federal Research Centre "Fundamentals of Biotechnology" of the Russian Academy of Sciences, Moscow 119071, Russia.

^c Laboratory of Mammalian Cell Bioengineering, Institute of Bioengineering, Federal Research Centre "Fundamentals of Biotechnology" of the Russian Academy of Sciences, Moscow 117312, Russia.

* Corresponding author. E-mail khrenovamg@my.msu.ru

‡ These authors contributed equally to this work

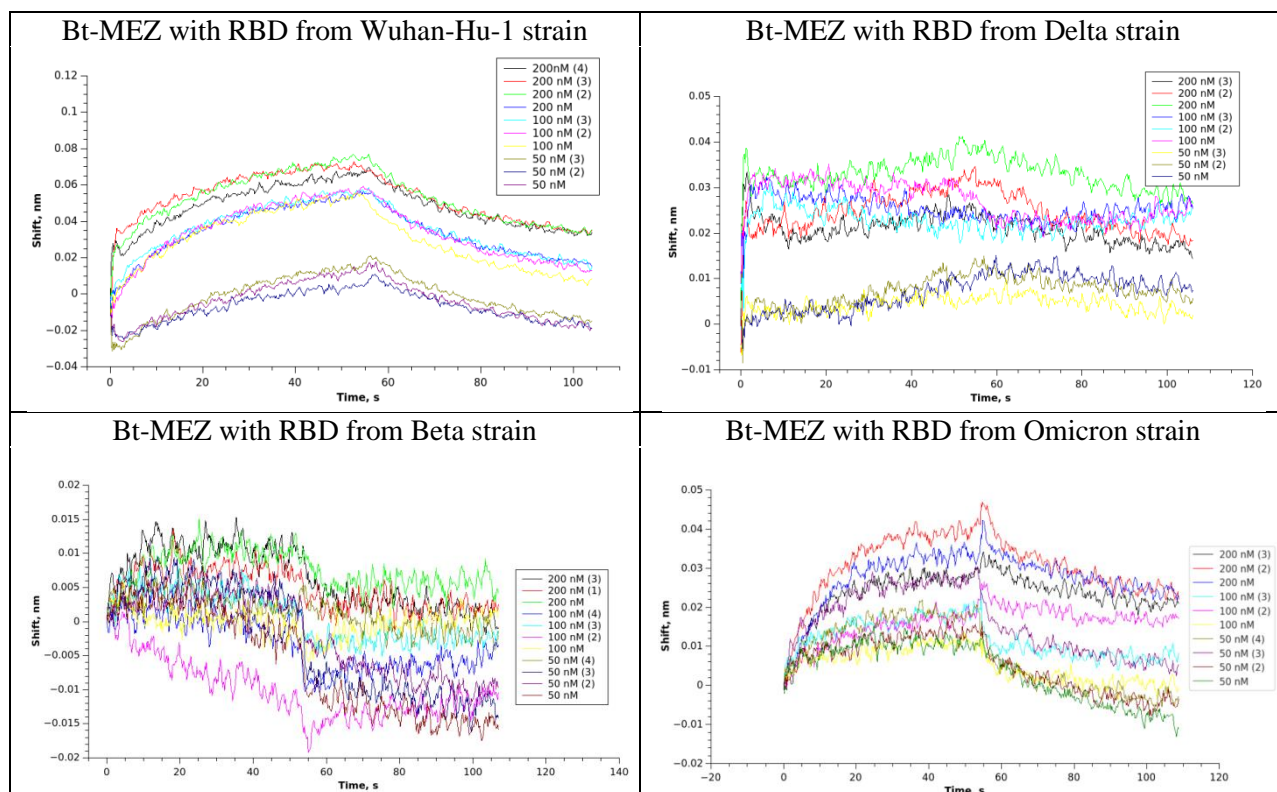


Figure S1. BLI sensorgrams for complexes of Bt-MEZ with RBD variants with mutations in the SARS-CoV-2 Spike proteins considered in the study.

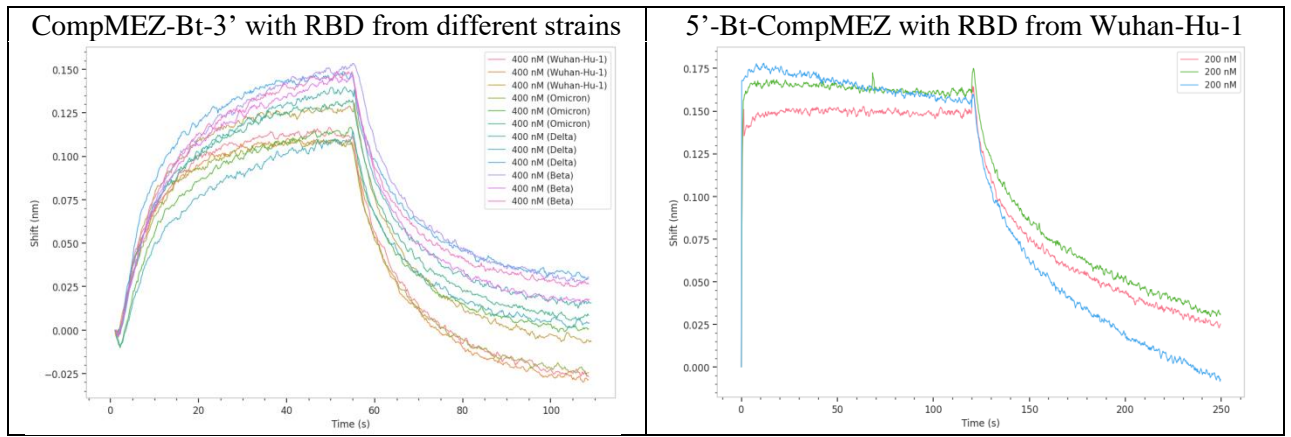


Figure S2. BLI sensorgrams for complexes of 5'- and 3'-biotinylated complementary MEZ with RBD variants with mutations in the SARS-CoV-2 Spike proteins considered in the study.

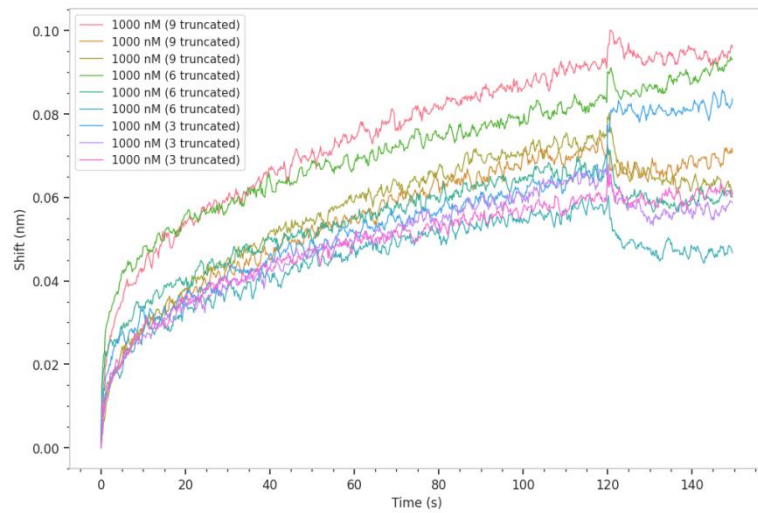


Figure S3. BLI sensorgrams for complexes of 5'-truncated MEZ with RBD from Wuhan-Hu-1 strain.