

Catalytic Stereoselective Synthesis of Cyclopentanones from Donor-Acceptor Cyclopropanes and in situ-generated Ketenes

Shubhanjan Mitra^a, Sophie M. Connolly^a, Saud Ayidi^a, Mukulesh Mondal^b, Manashi Panda^b,
Brian G. Kelly^c and Nessian J. Kerrigan^{*a}

^aSchool of Chemical Sciences and Life Sciences Institute, Dublin City University, Glasnevin, Dublin 9, Ireland.

^bDepartment of Chemistry, Oakland University, 2200 N. Squirrel Road, Rochester, MI 48309-4477, USA.

^cKelAda Pharmachem, Belfield, Dublin 4, Ireland.

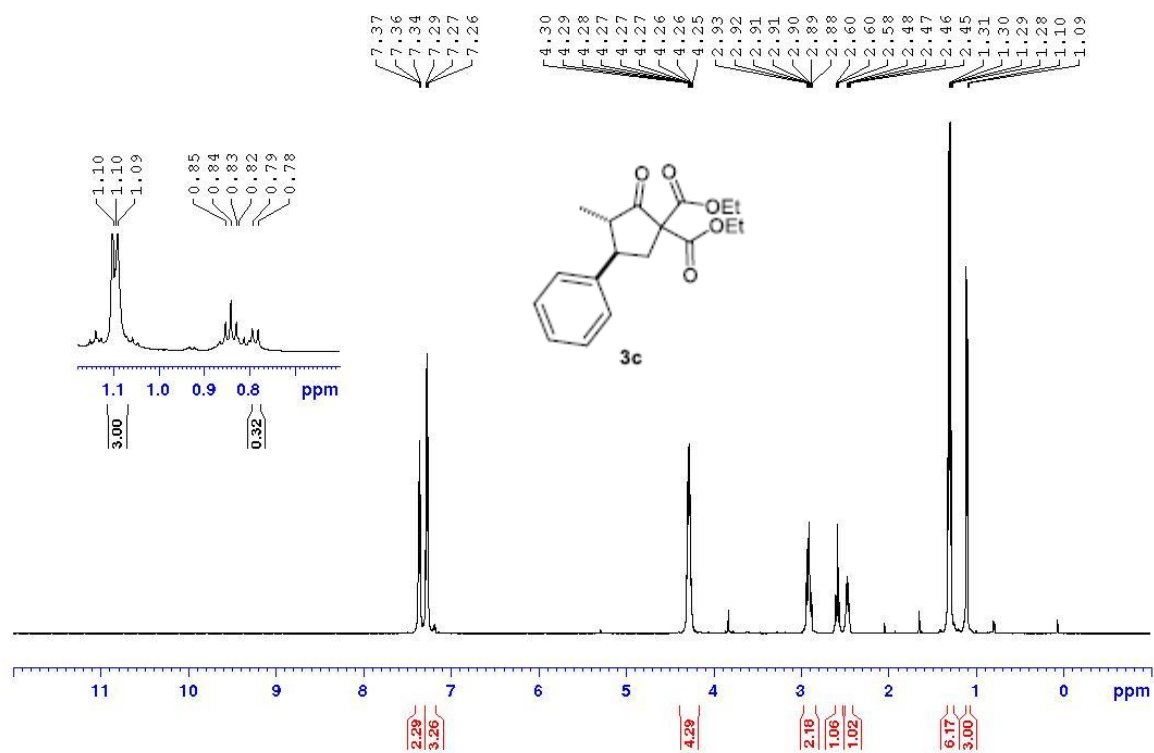
NMR and HPLC spectra

Table of Contents:

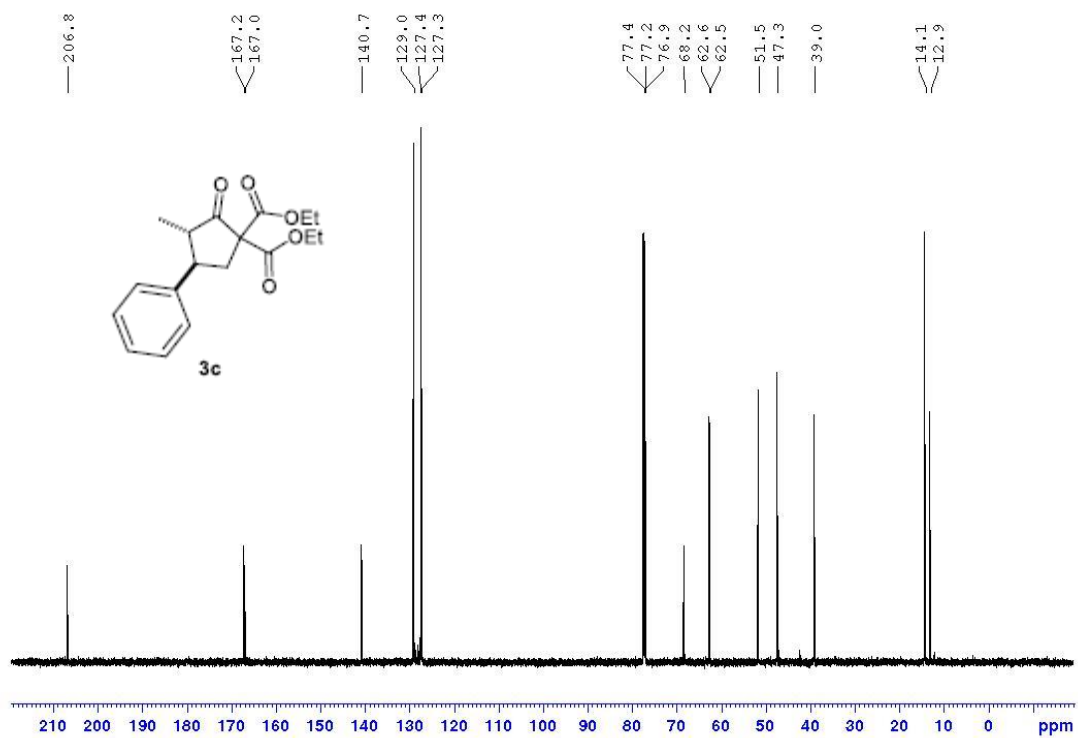
¹ H & ¹³ C NMR of 3c	3
¹ H & ¹³ C NMR of 3d	5
¹ H & ¹³ C NMR of 3e	7
¹ H & ¹³ C NMR of 3f	9
¹ H & ¹³ C NMR of 3g	11
¹ H & ¹³ C NMR of 3h	13
¹ H & ¹³ C NMR of 3i	15
¹ H & ¹³ C NMR of 3j	17
¹ H & ¹³ C NMR of 3k	19
¹ H & ¹³ C NMR of 3l	21
¹ H & ¹³ C NMR of 3m	23
¹ H & ¹³ C NMR of 3n	25
¹ H & ¹³ C NMR of 3o	27
¹ H & ¹³ C NMR of 3p	29
¹ H & ¹³ C NMR of 3q	31
¹ H & ¹³ C NMR of 3r	33
¹ H & ¹³ C NMR of 3s	35
¹ H & ¹³ C NMR of (–)- 3c	37
¹ H & ¹³ C NMR of (+)- 3c	39

HPLC of (±)- 3c	41
HPLC of (-)- 3c	42
HPLC of (+)- 3c	43
¹ H & ¹³ C NMR of (-)- 3d	44
¹ H & ¹³ C NMR of (+)- 3d	46
HPLC of (±)- 3d	48
HPLC of (-)- 3d	49
HPLC of (+)- 3d	50
¹ H & ¹³ C NMR of 5d	51
2D-NOESY for 3c	53

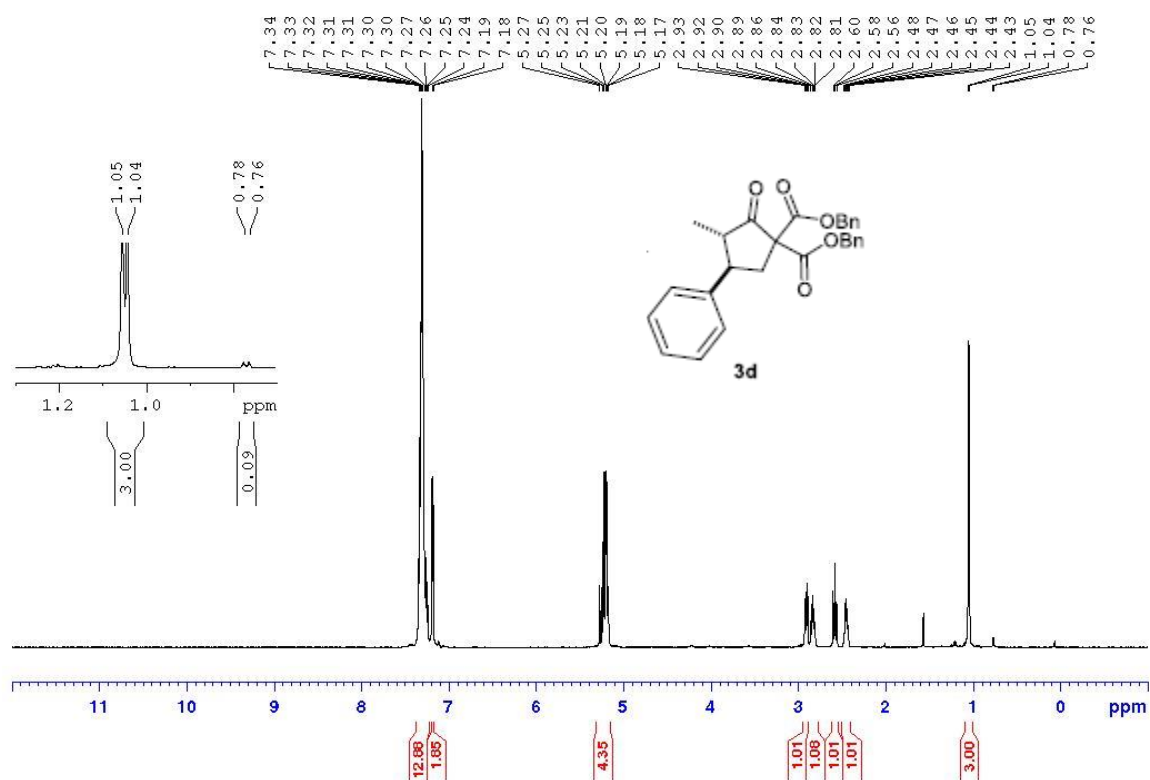
¹H NMR of **3c**:



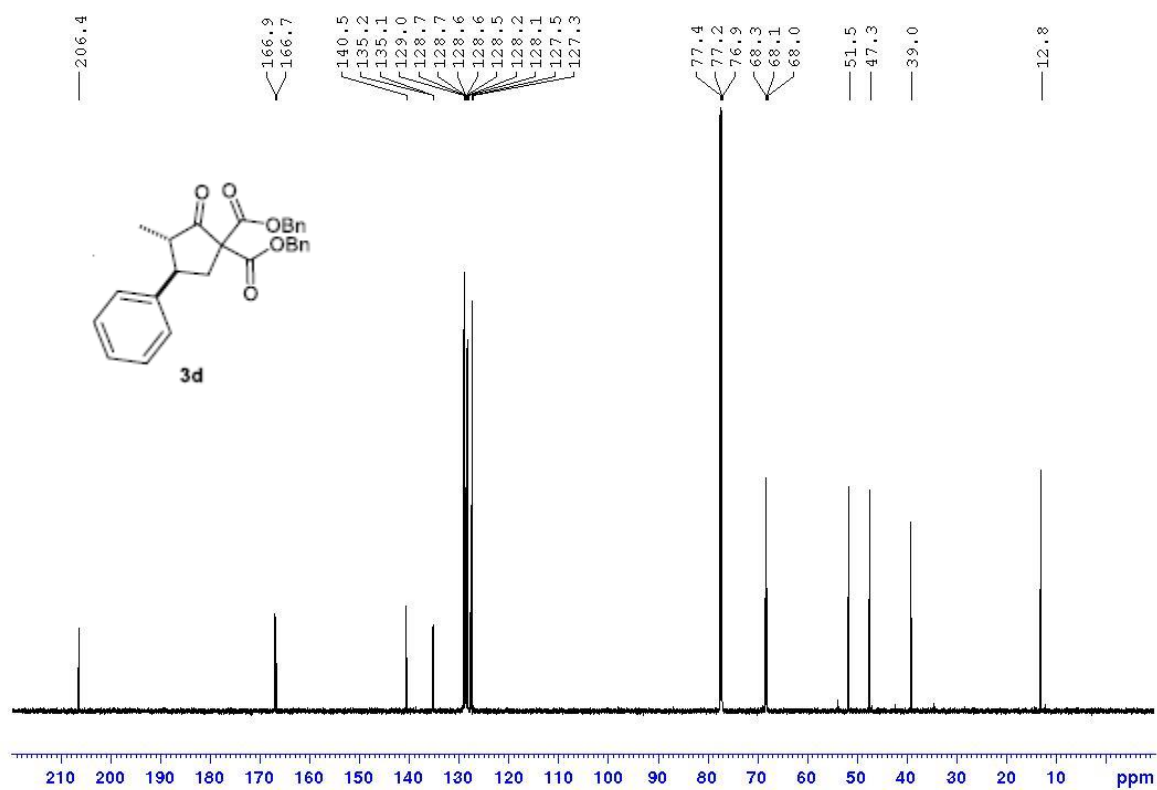
¹³C NMR of **3c**:



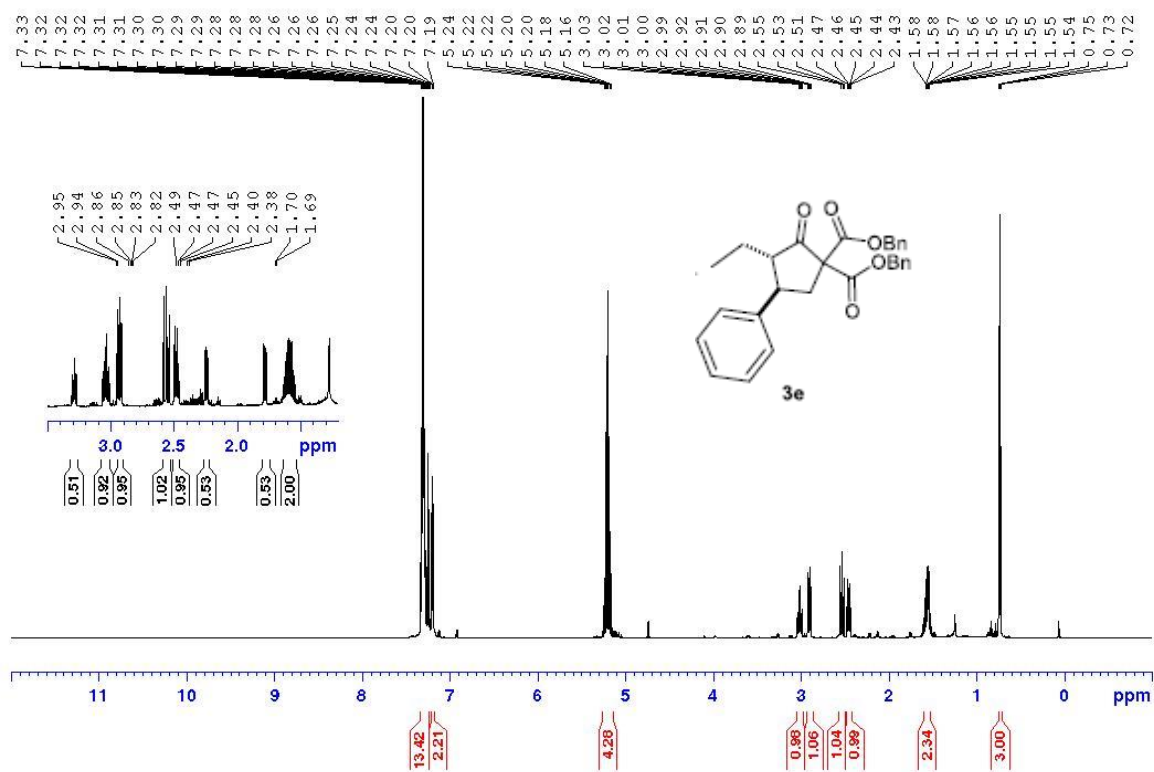
¹H NMR of **3d**:



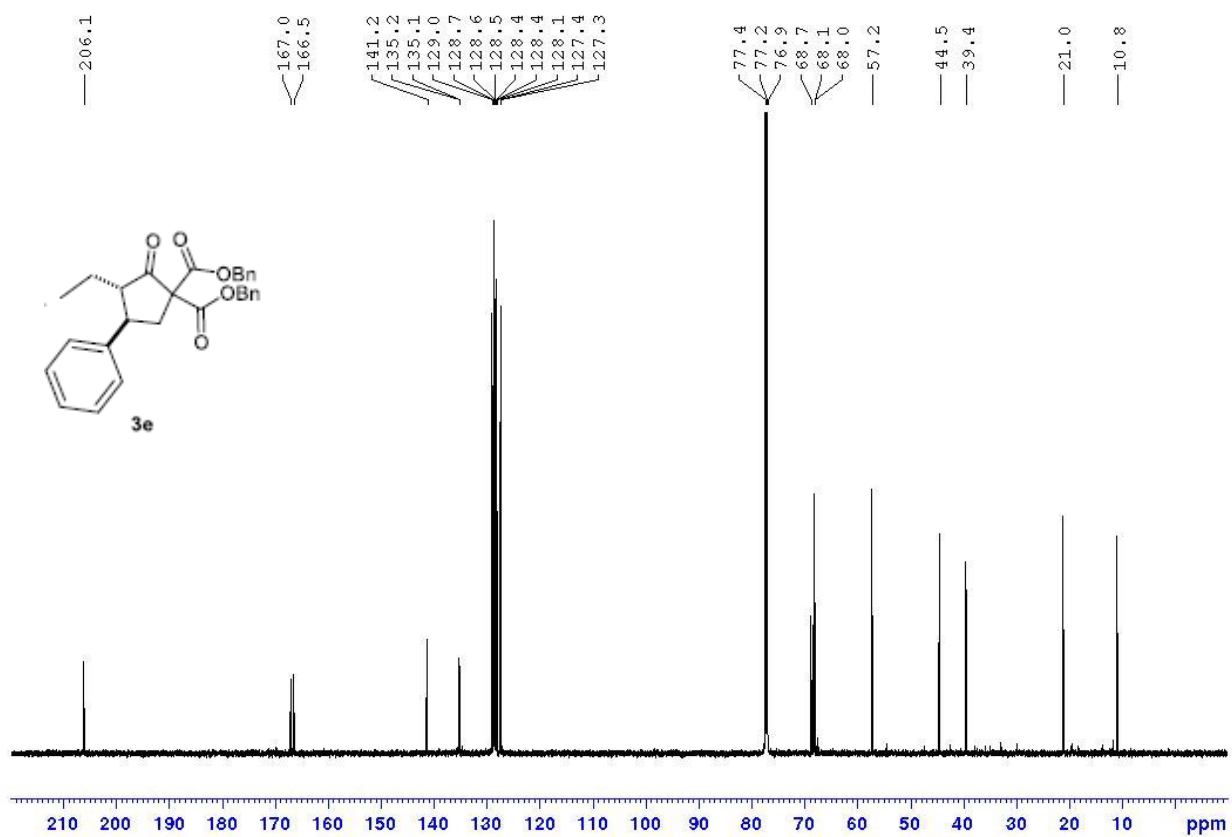
¹³C NMR of **3d**:



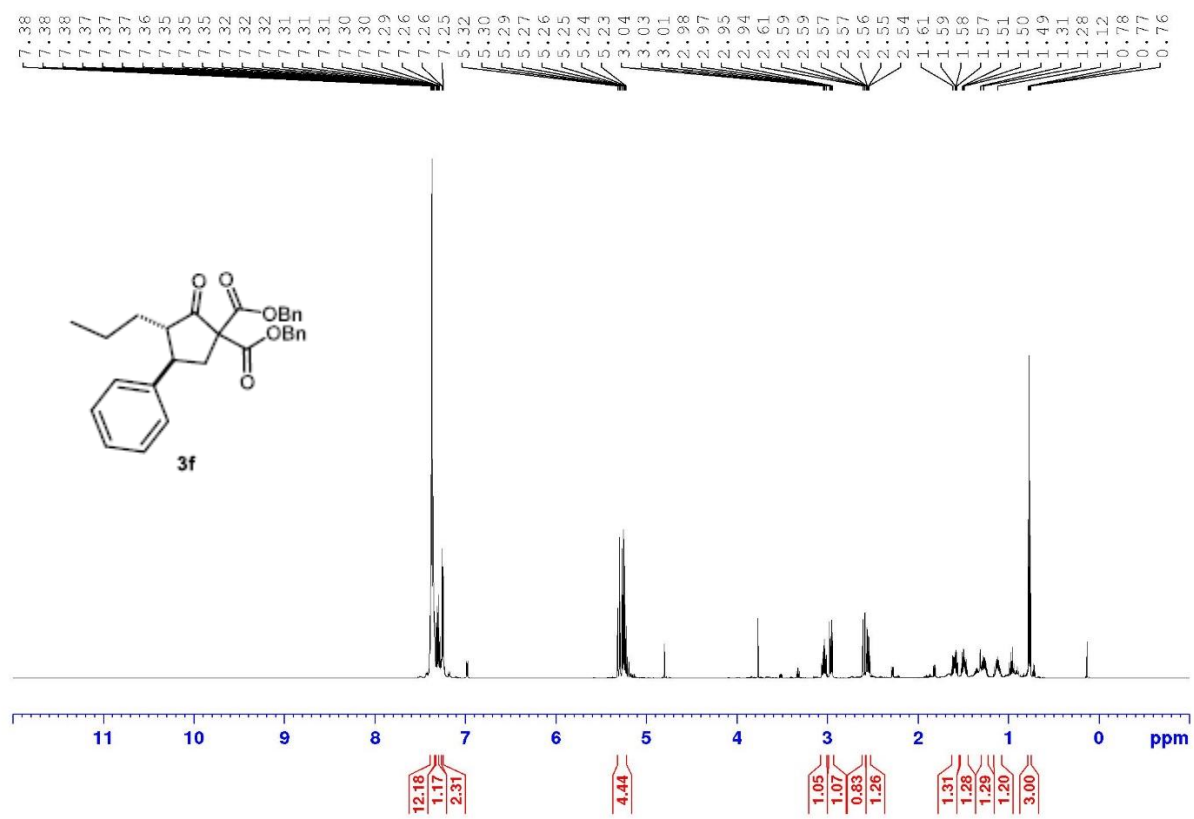
¹H NMR of 3e:



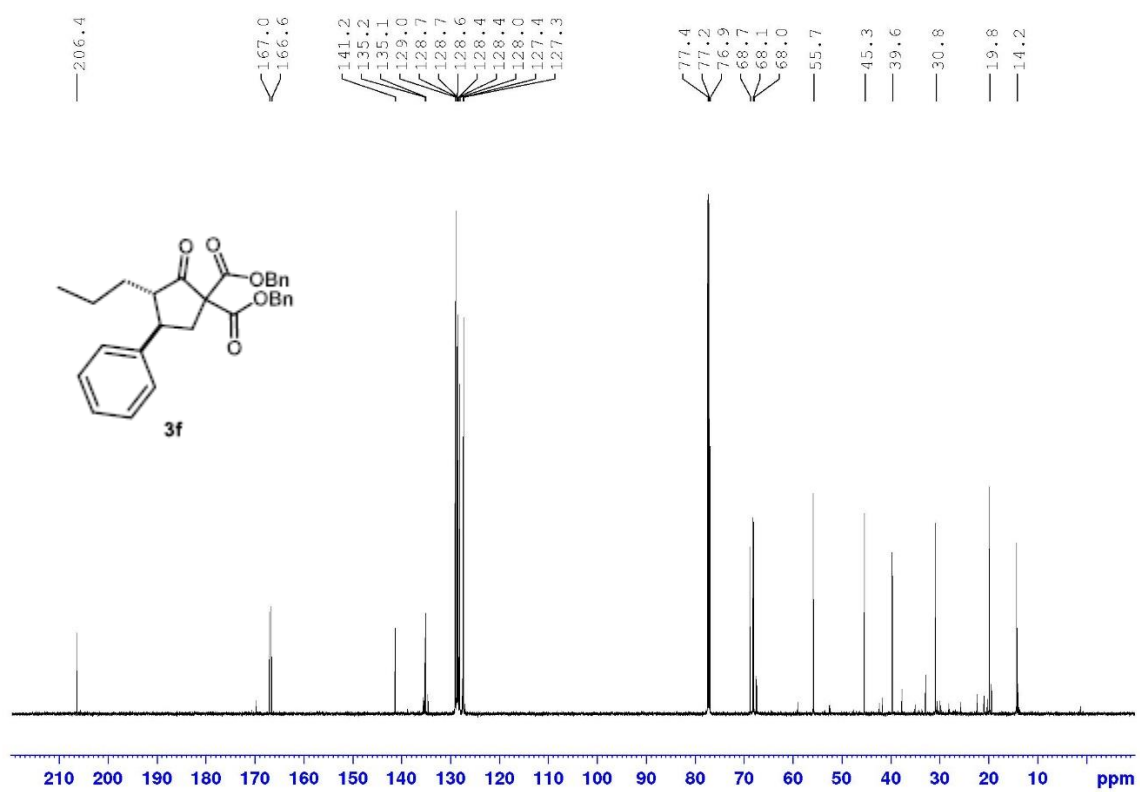
^{13}C NMR of **3e**:



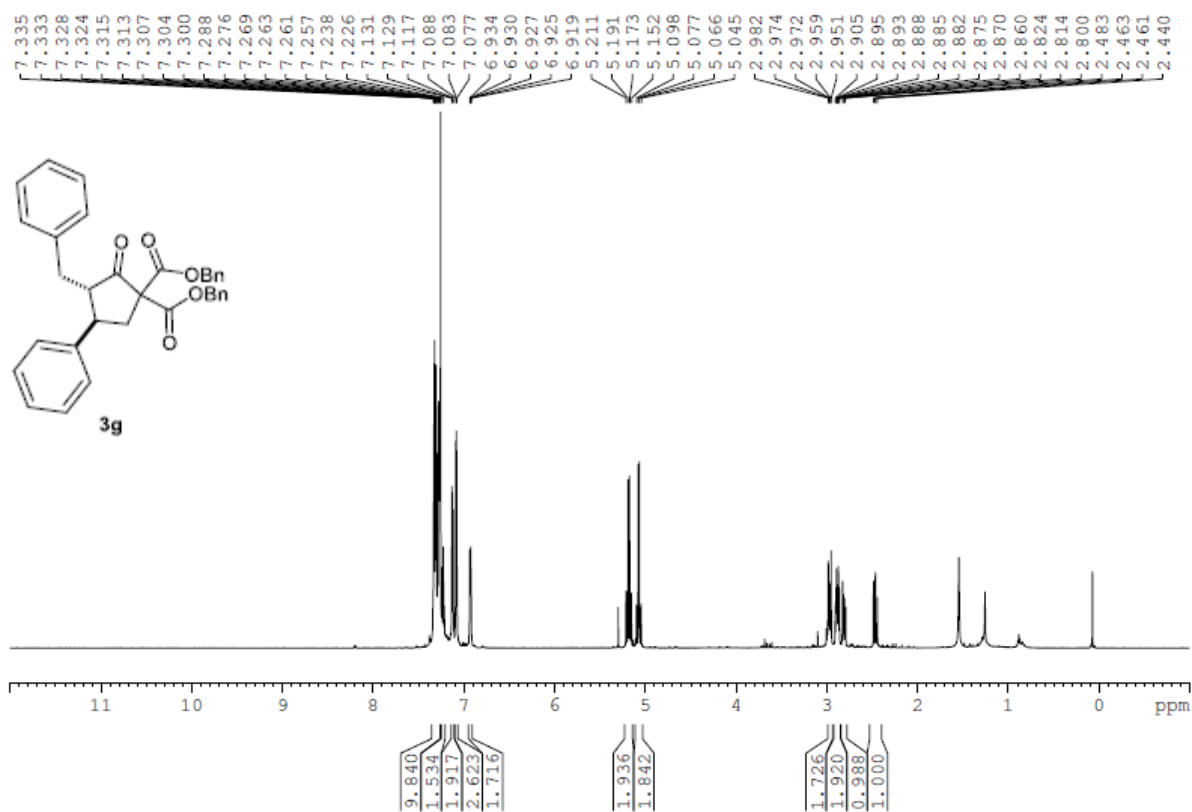
¹H NMR of 3f:



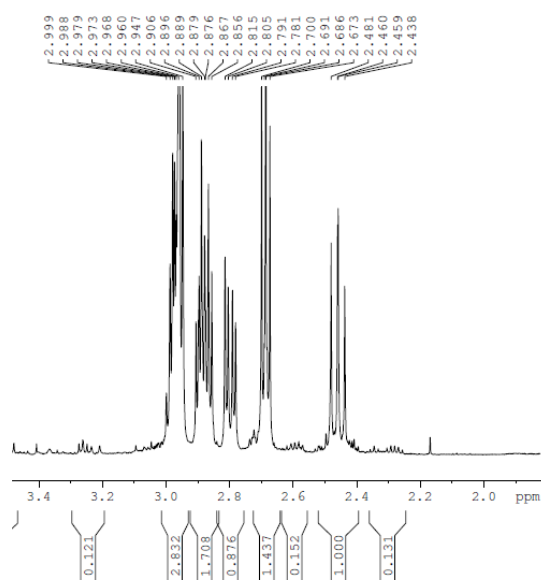
^{13}C NMR of **3f**:



¹H NMR of **3g**:

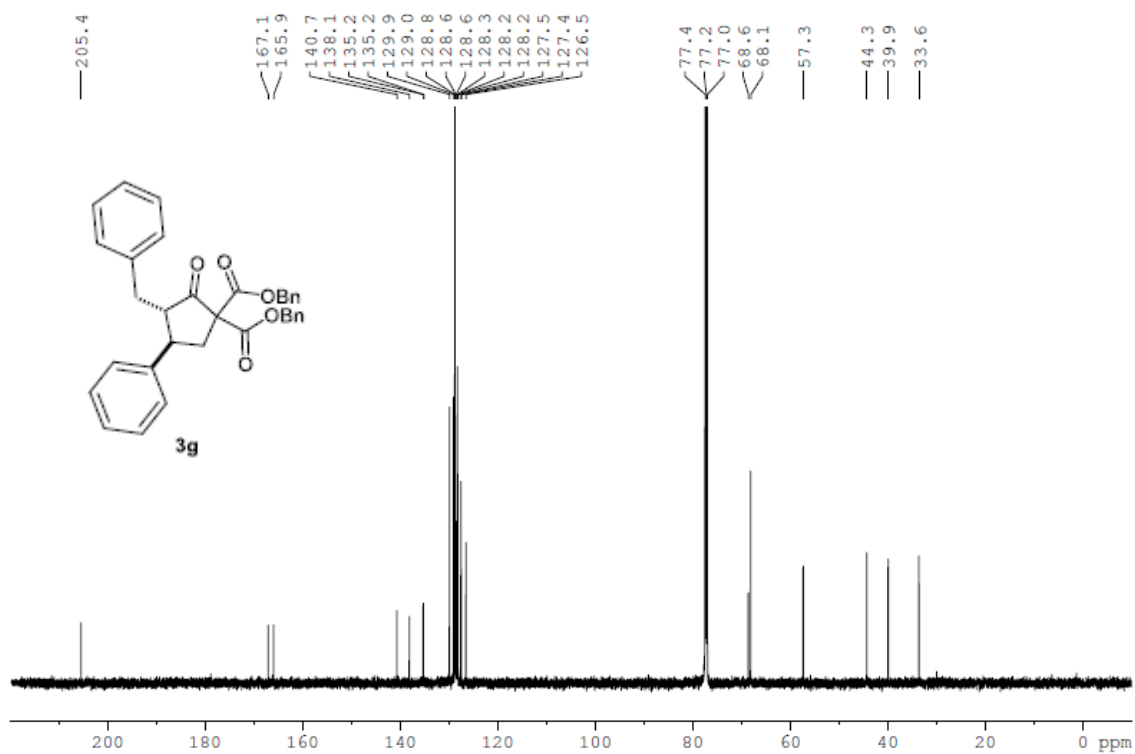


Crude ¹H NMR expansion:

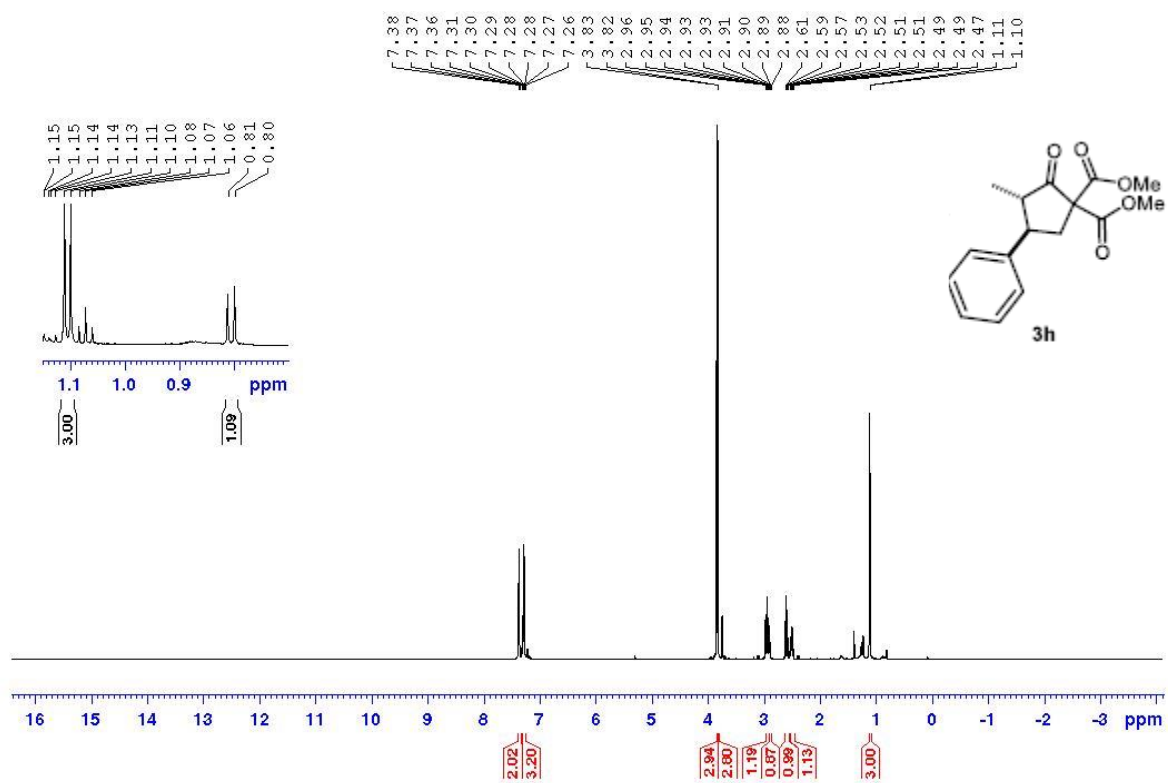


¹³C NMR of **3g**:

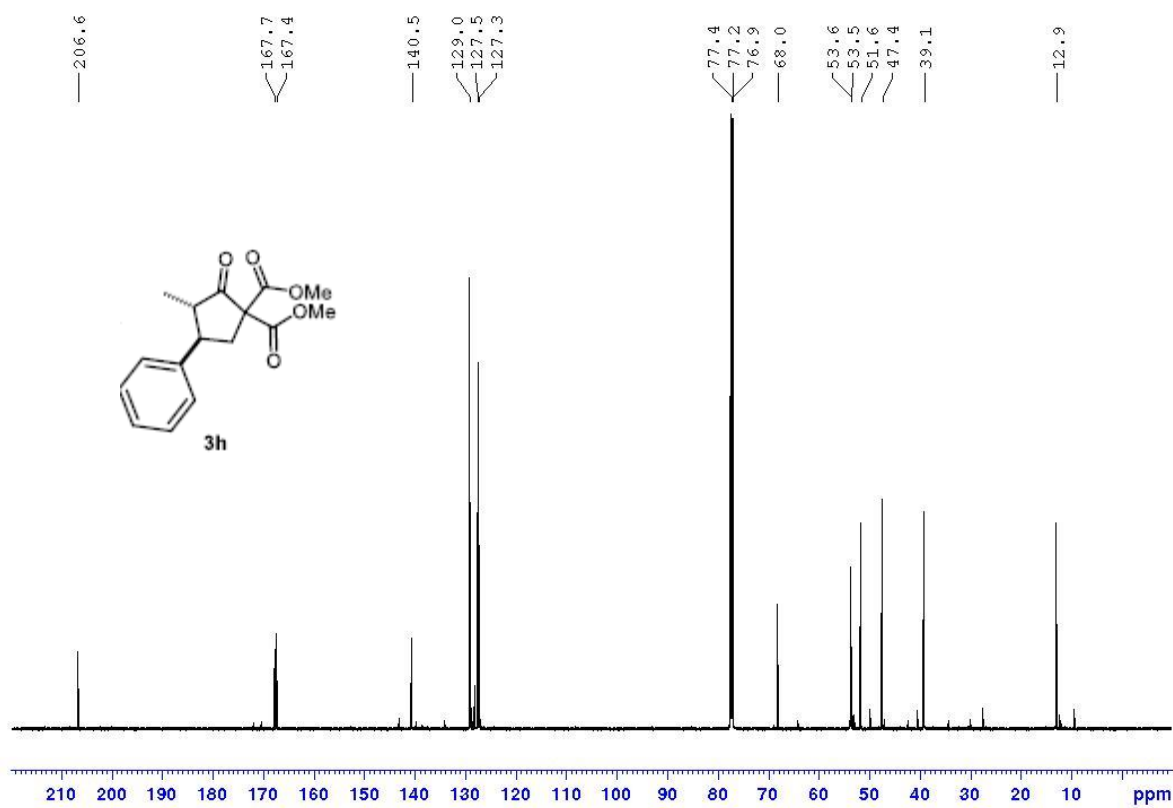
S872-SM-2910-129-B



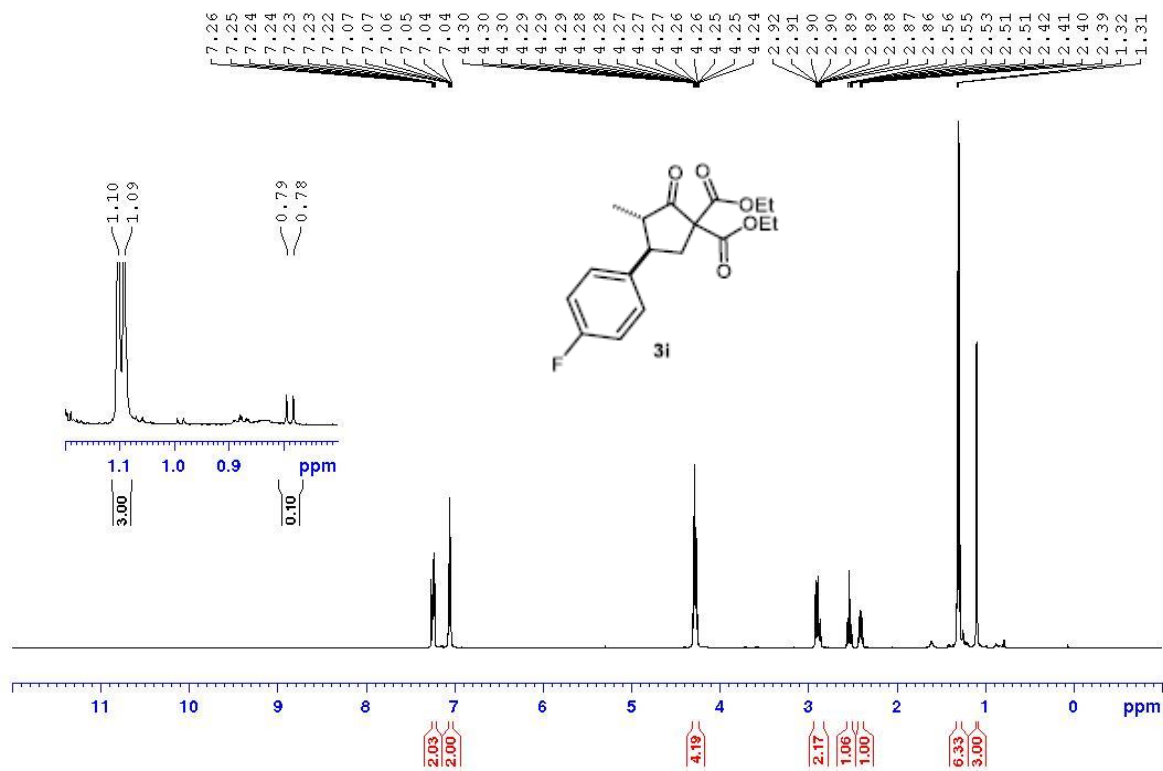
¹H NMR of 3h:



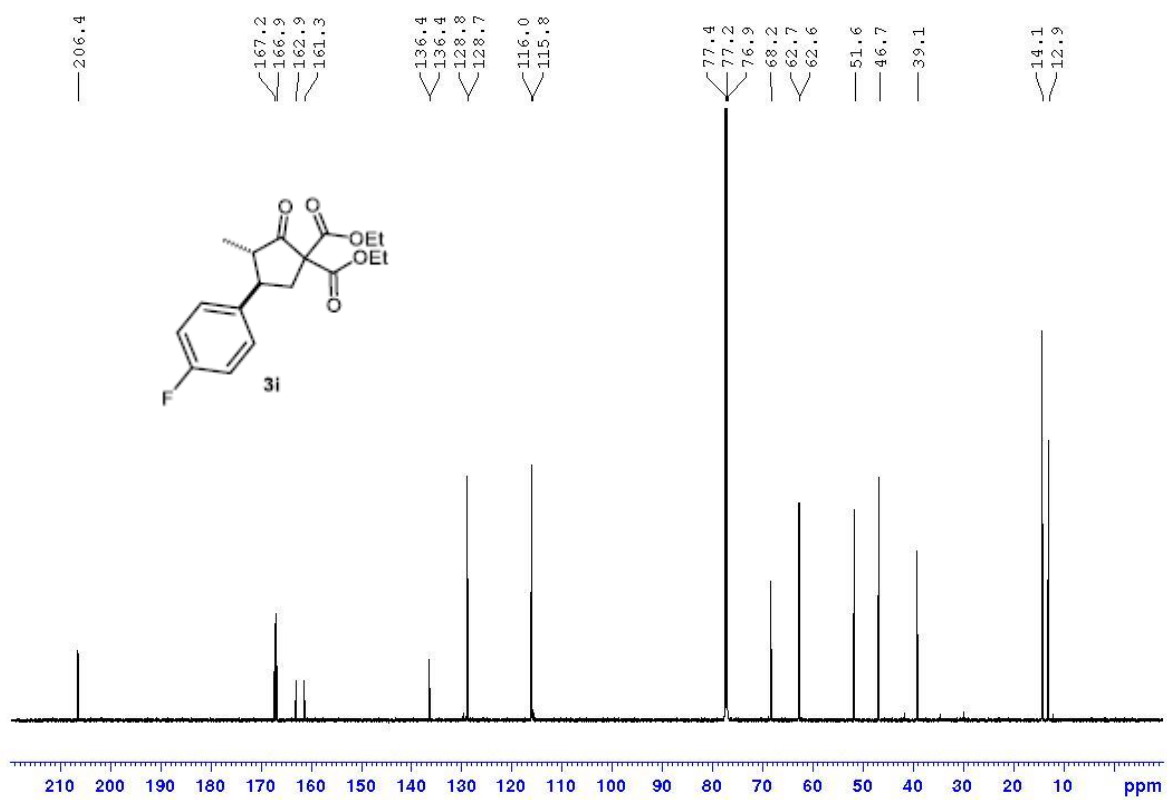
¹³C NMR of **3h**:



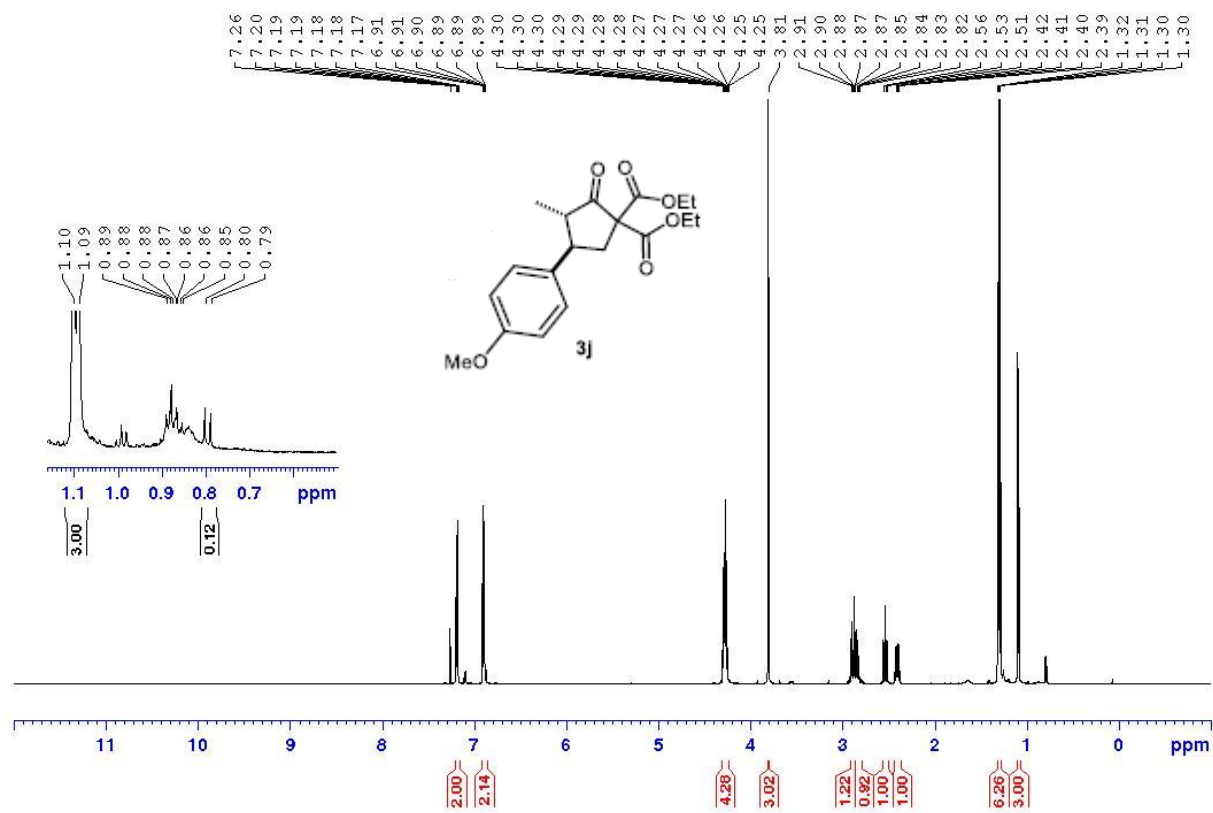
¹H NMR of **3i**:



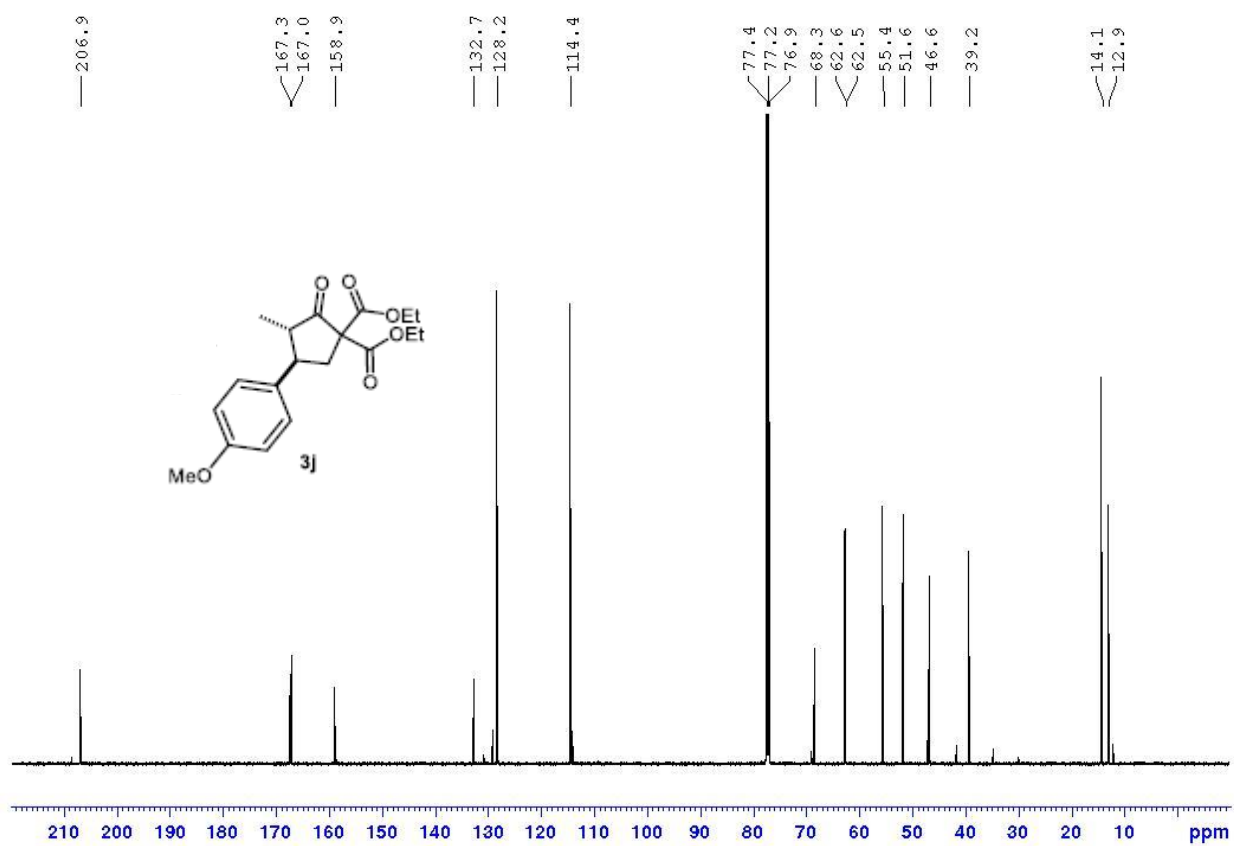
^{13}C NMR of **3i**:



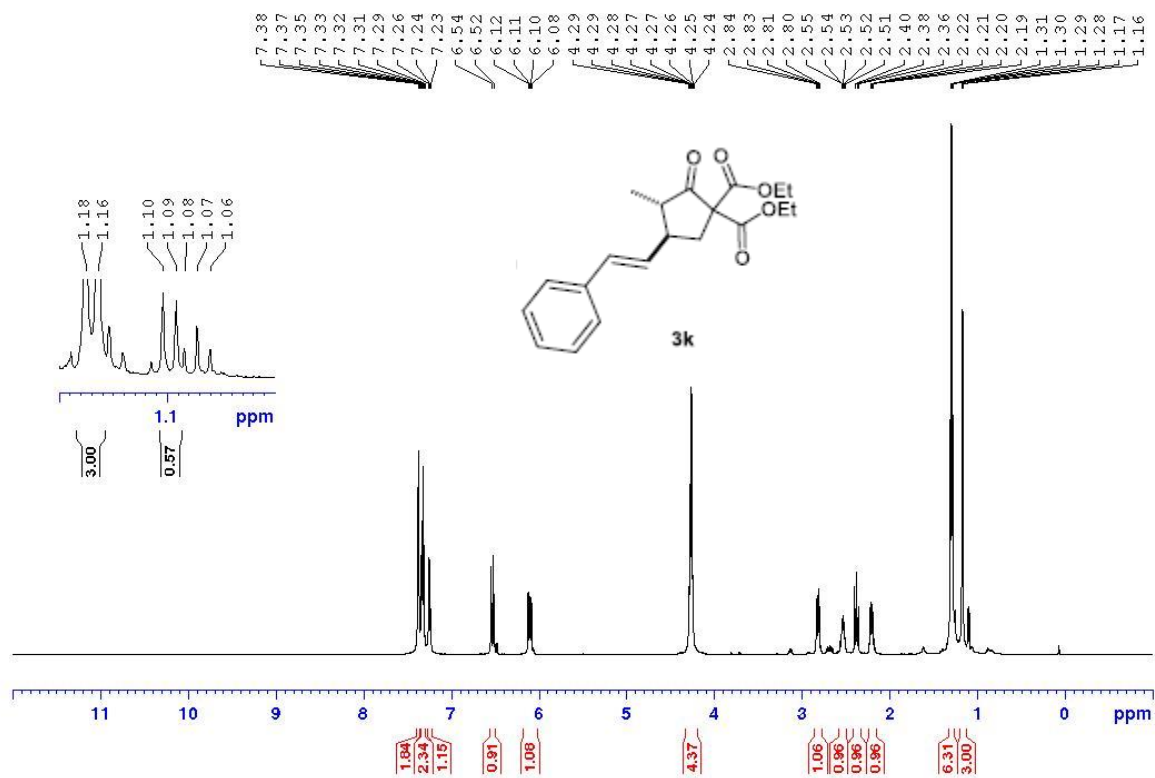
¹H NMR of **3j**:



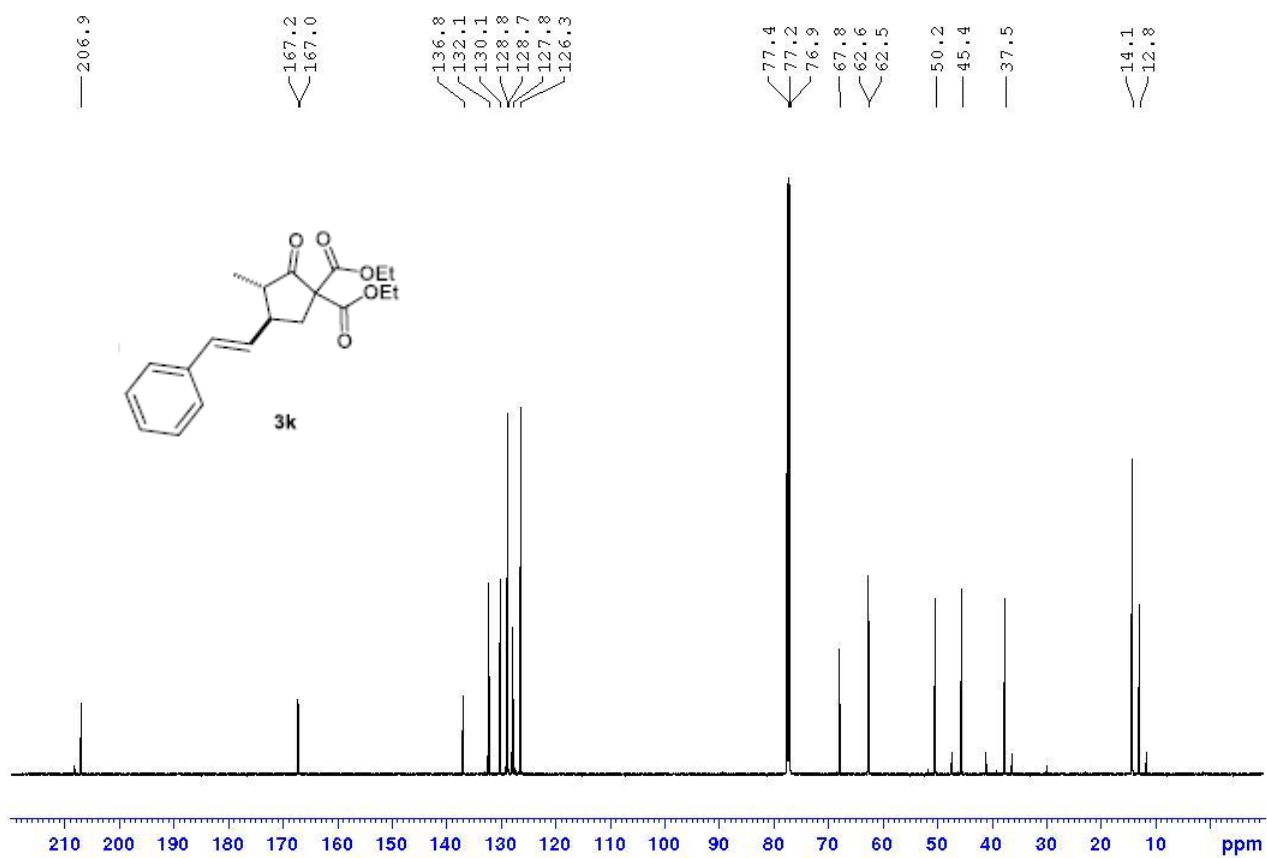
¹³C NMR of **3j**:



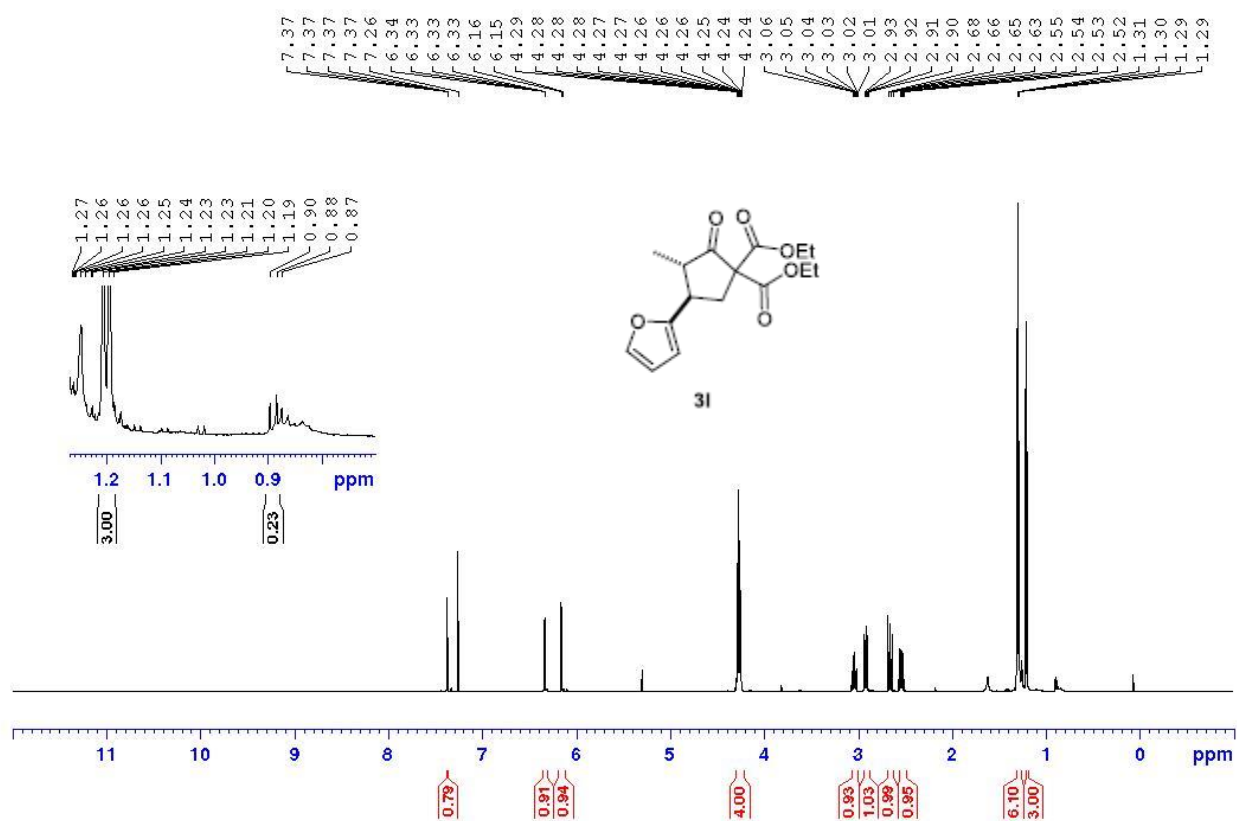
¹H NMR of 3k:



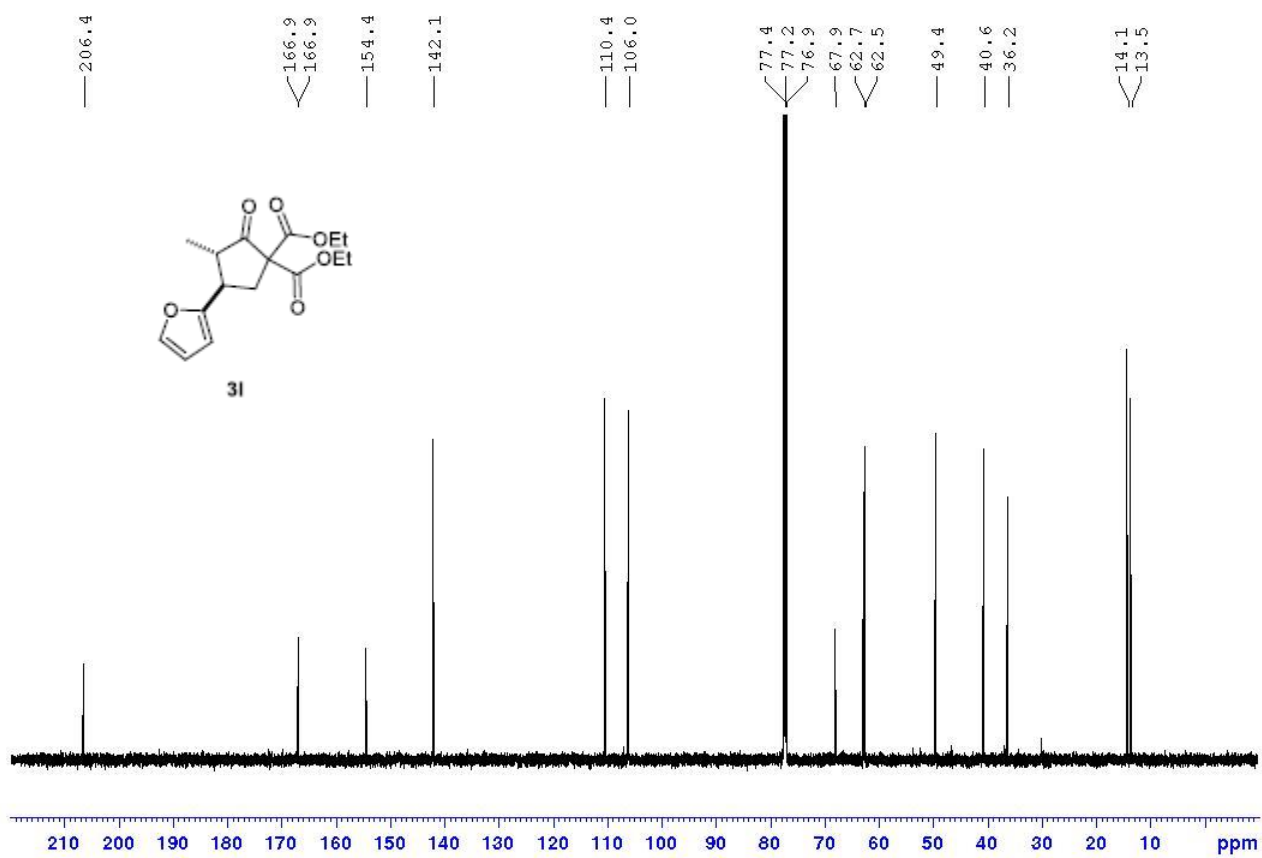
^{13}C NMR of **3k**:



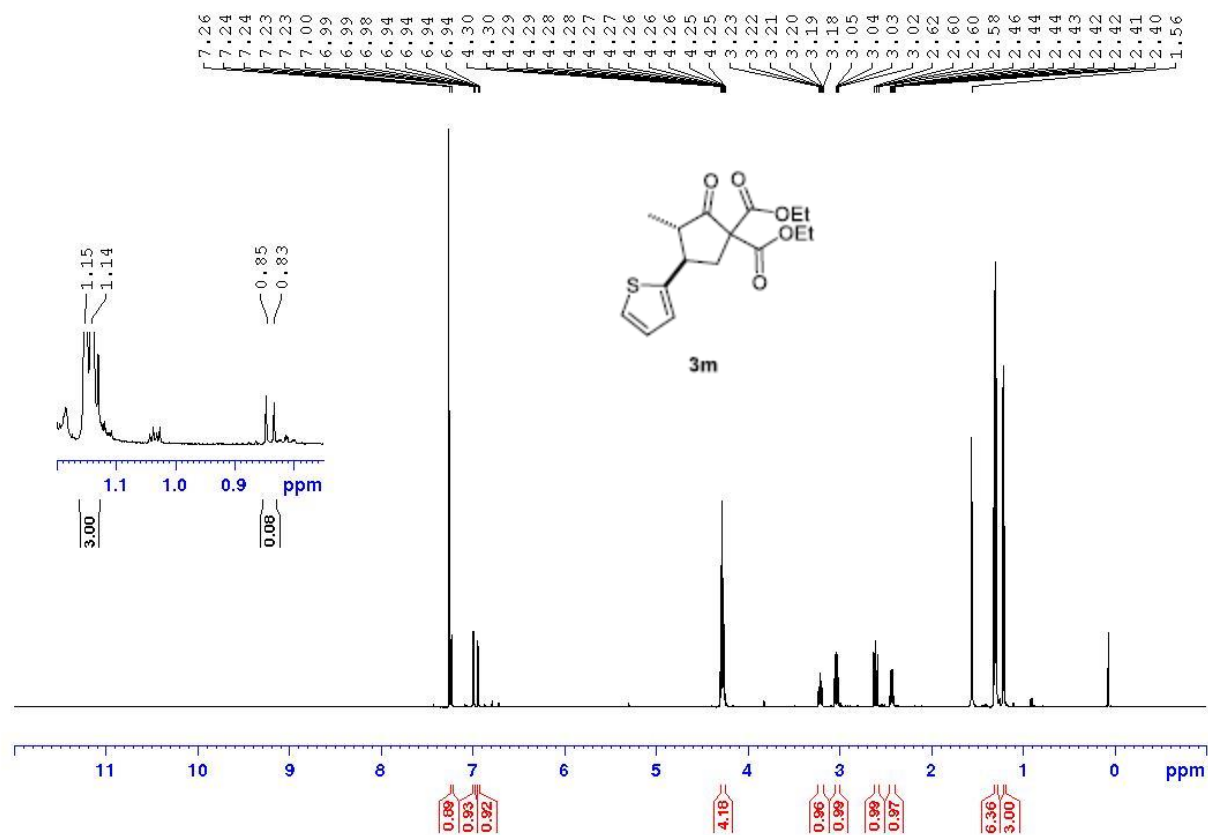
¹H NMR of **3l**:



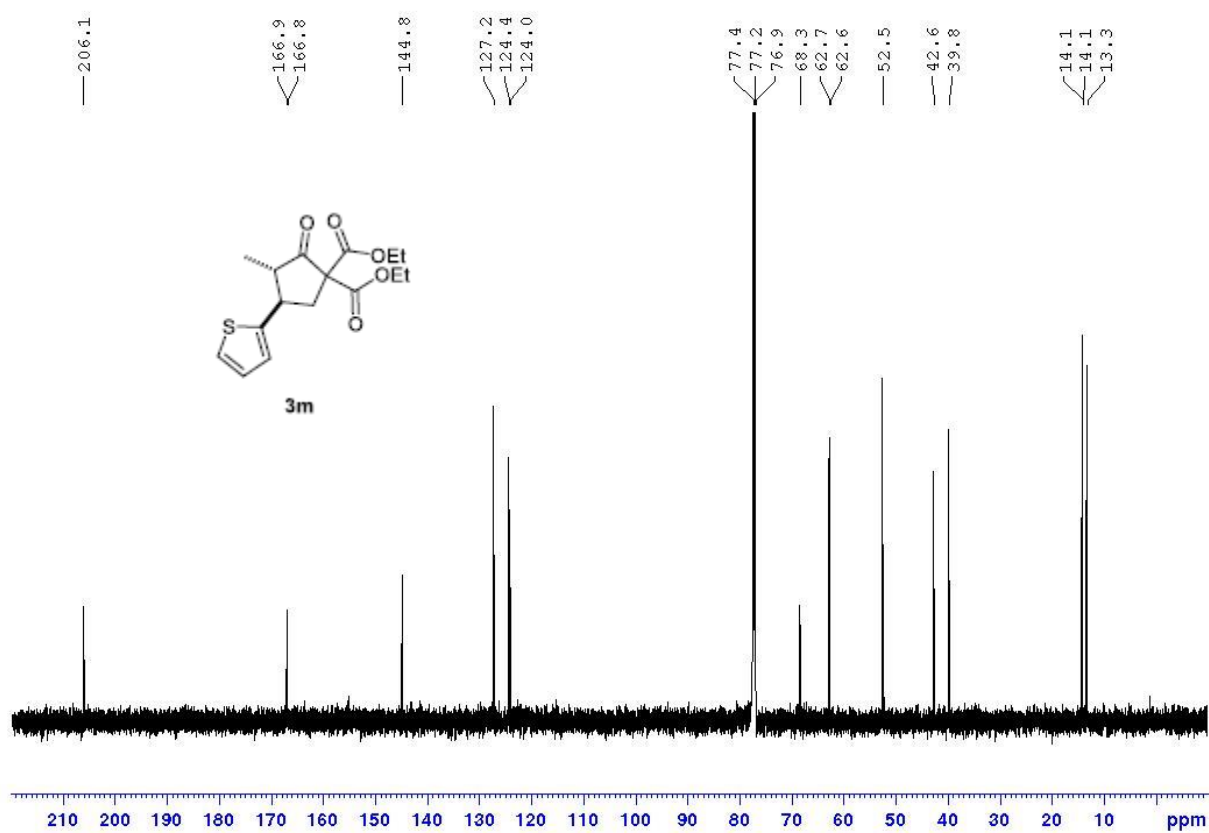
¹³C NMR of **3l**:



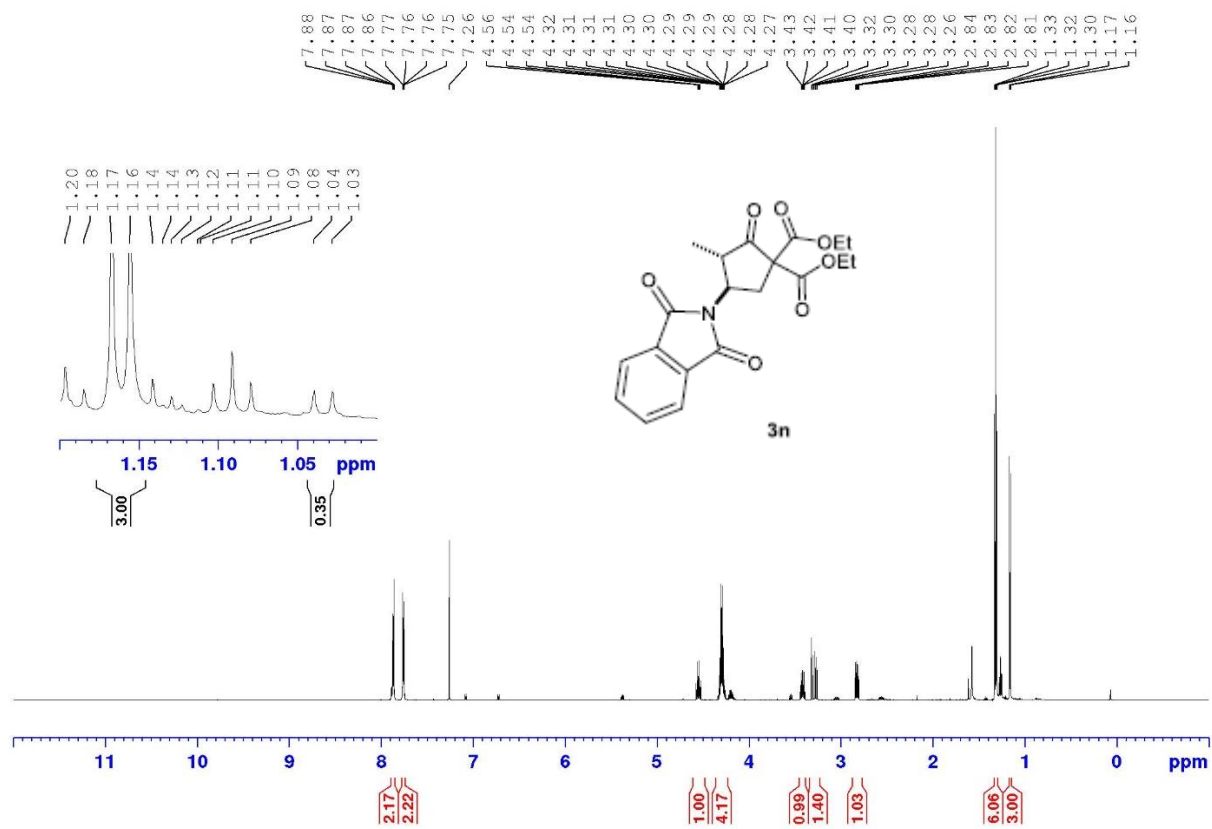
¹H NMR of **3m**:



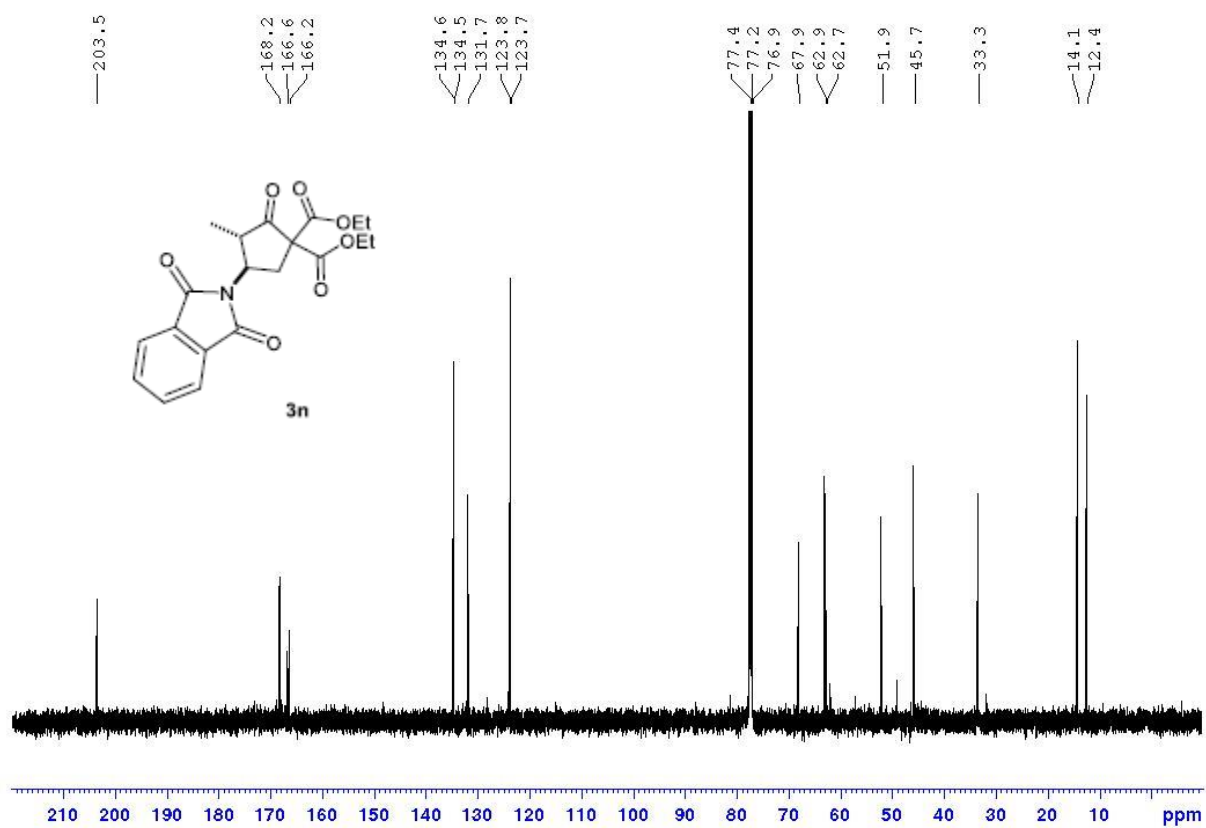
^{13}C NMR of **3m**:



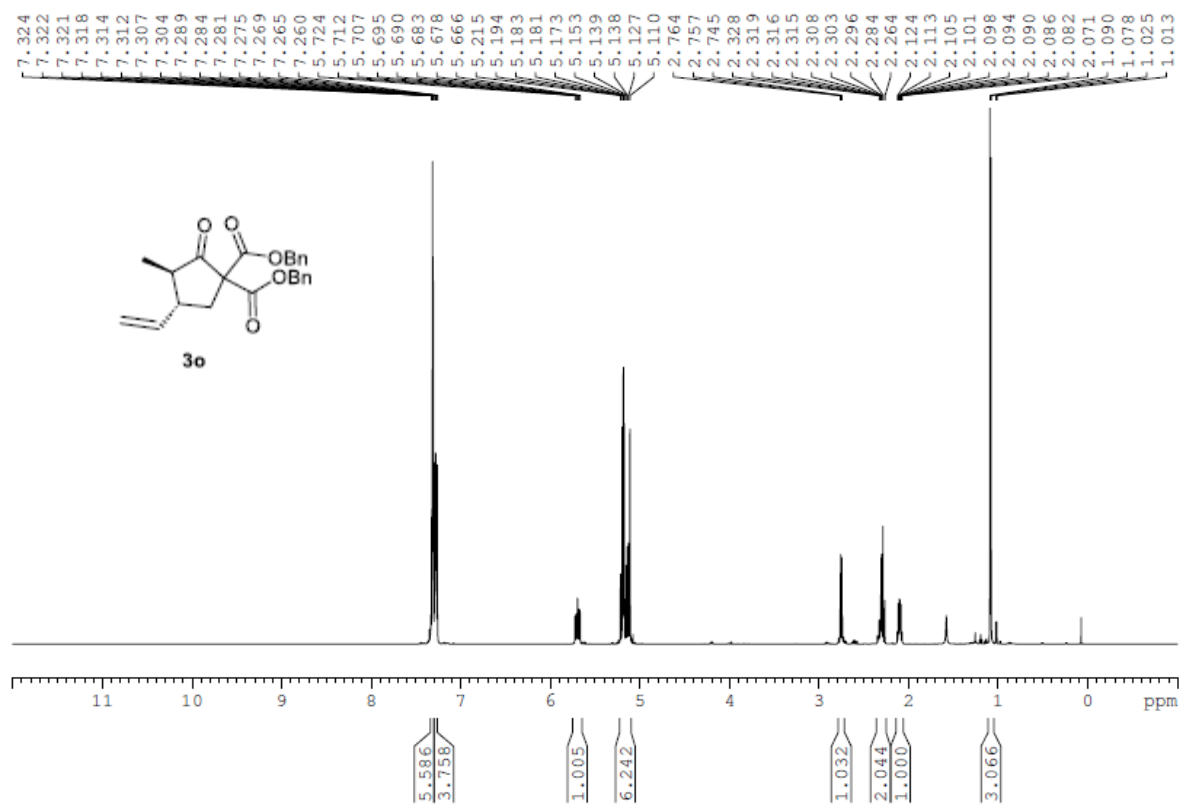
¹H NMR of 3n:



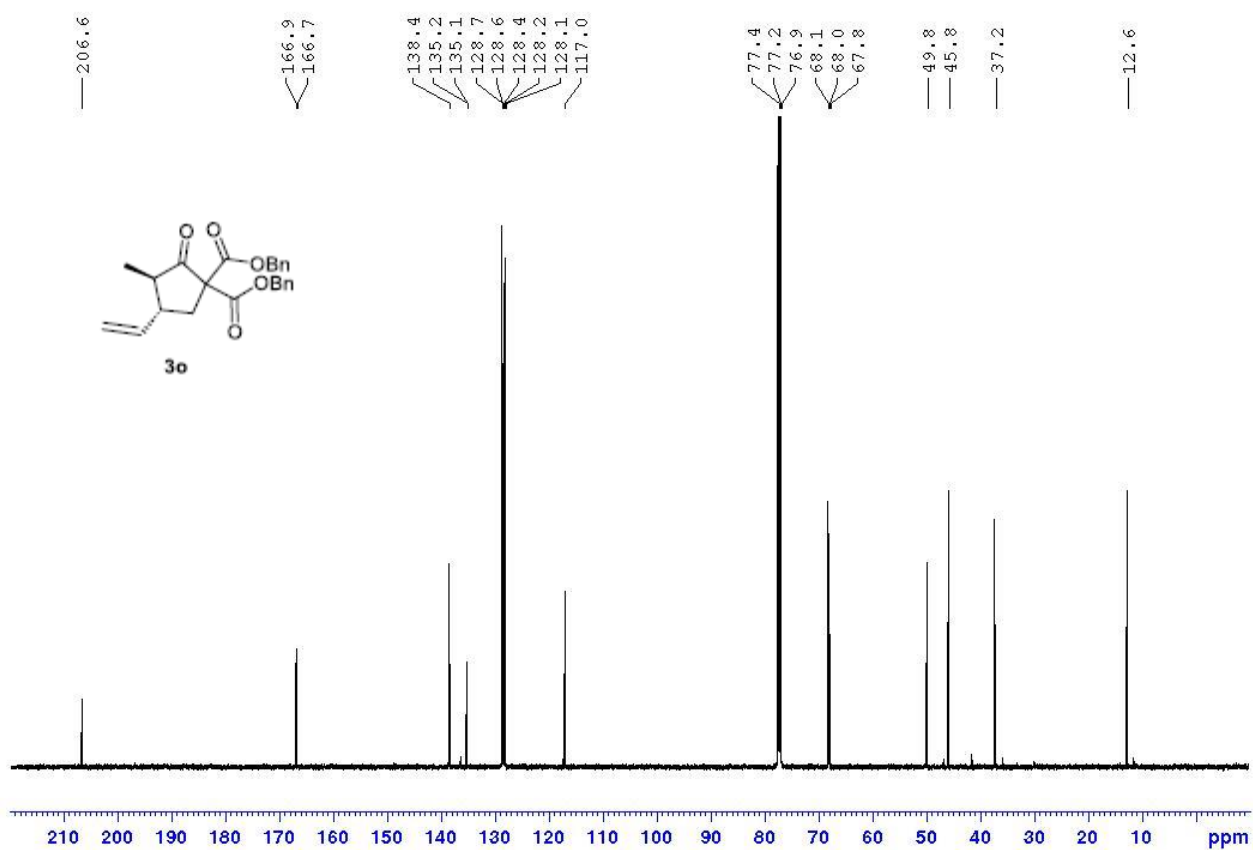
^{13}C NMR of **3n**:



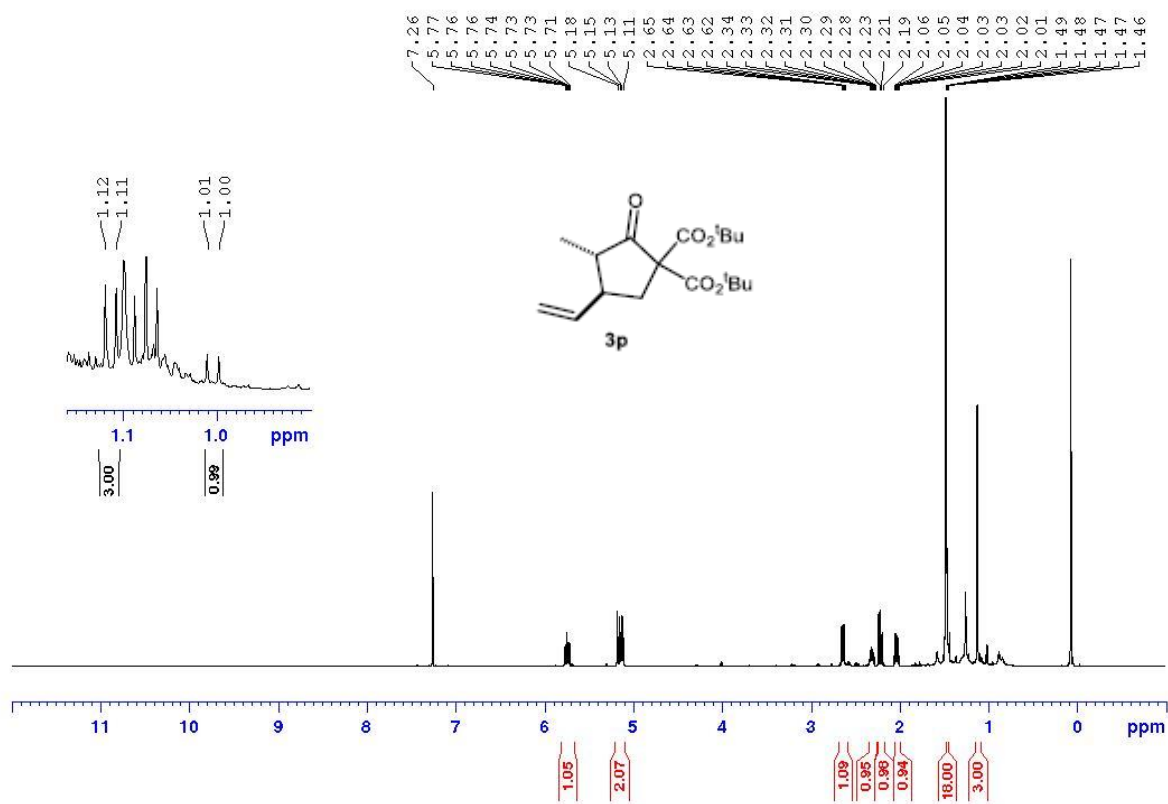
¹H NMR of **3o**:



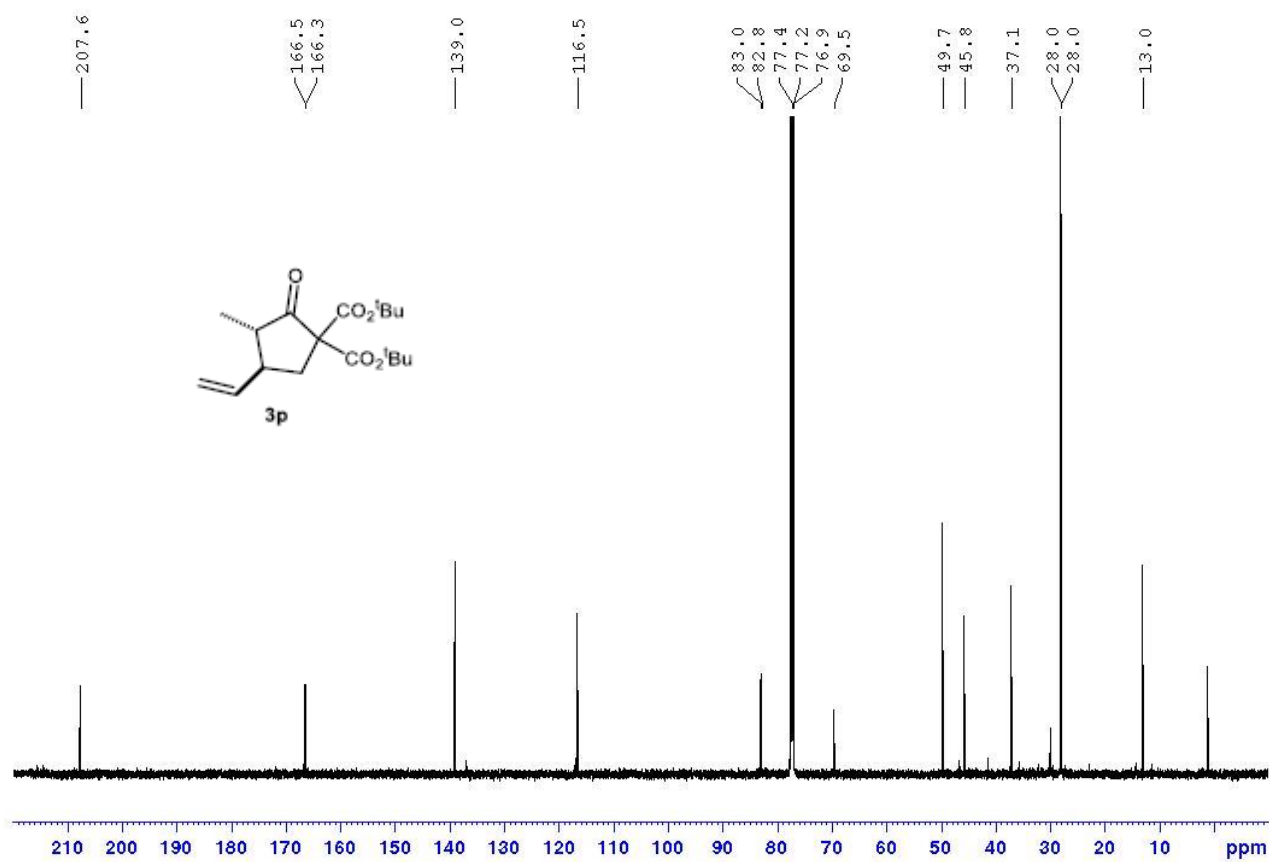
¹³C NMR of **3o**:



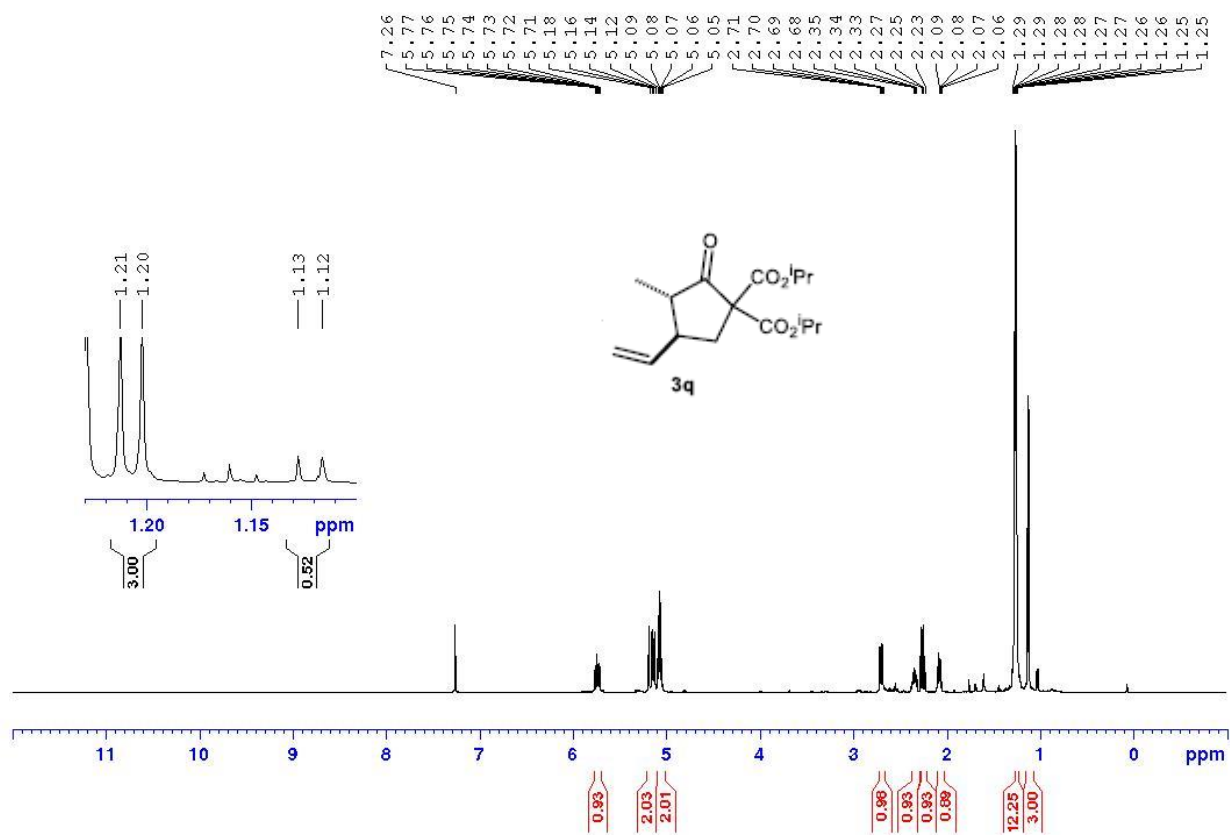
¹H NMR of 3p:



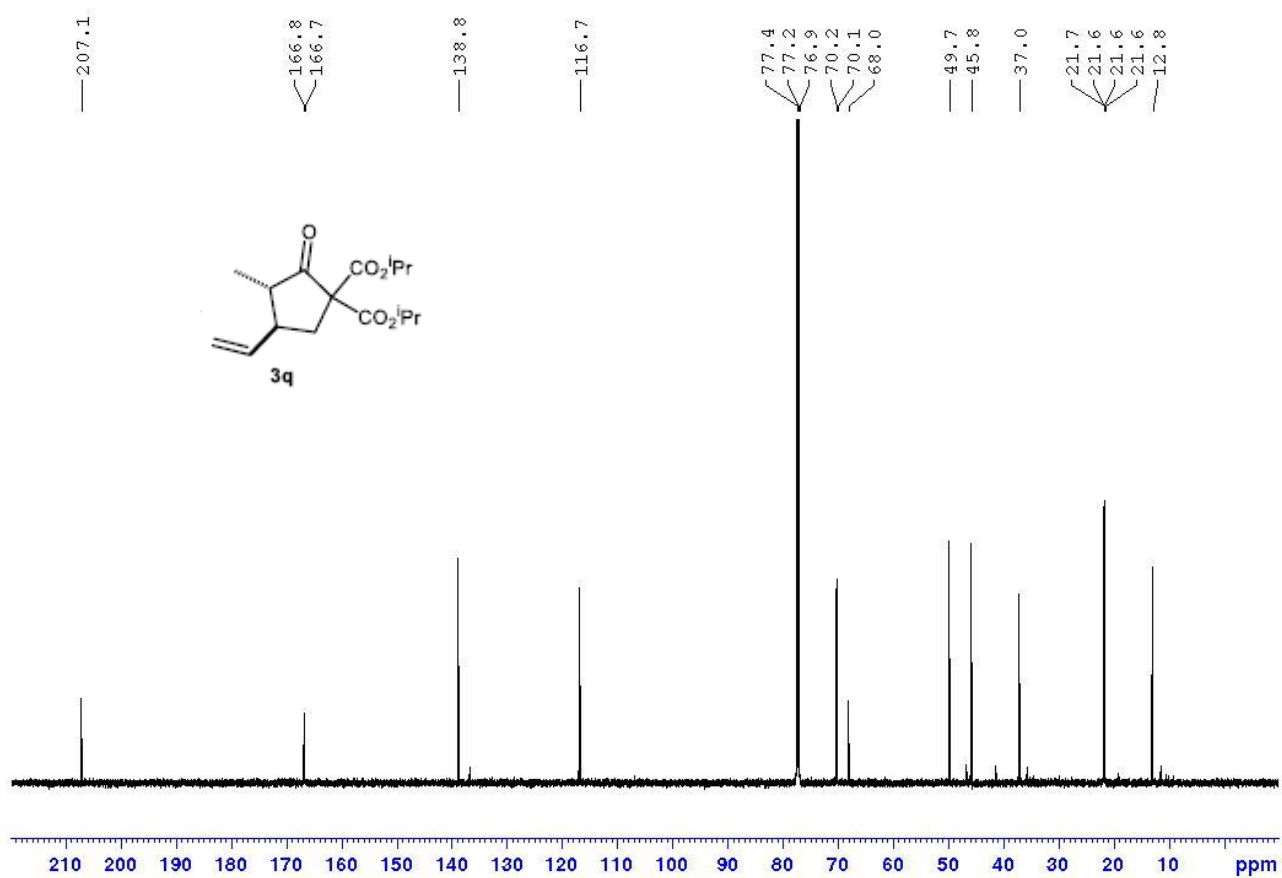
^{13}C NMR of **3p**:



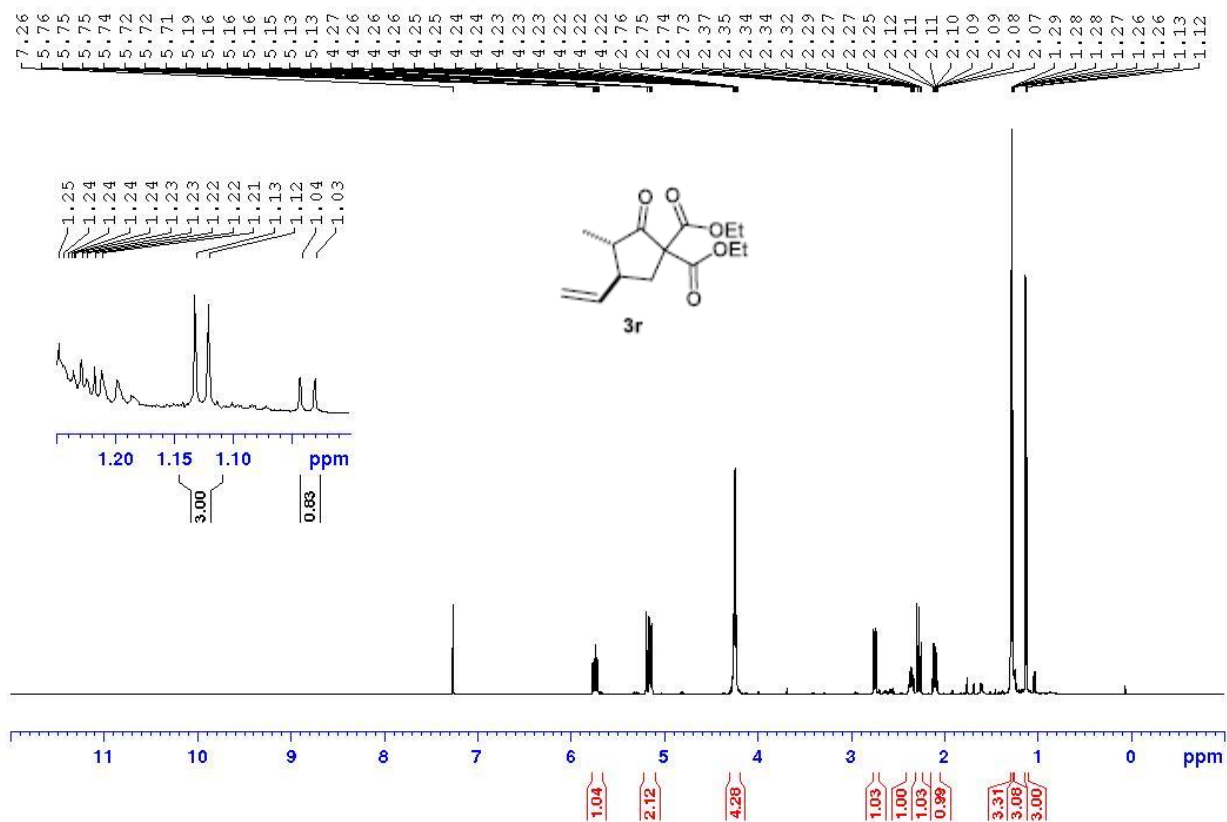
¹H NMR of **3q**:



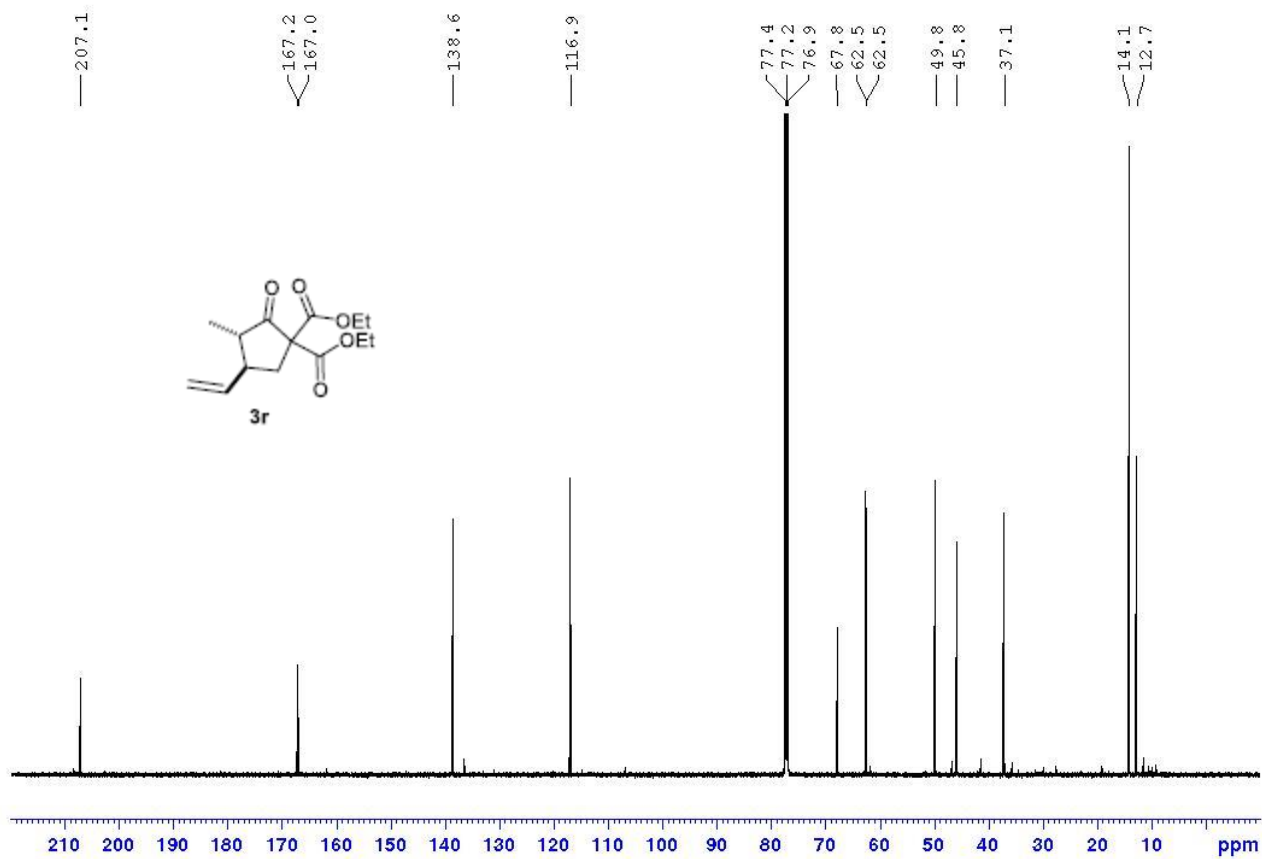
¹³C NMR of **3q**:



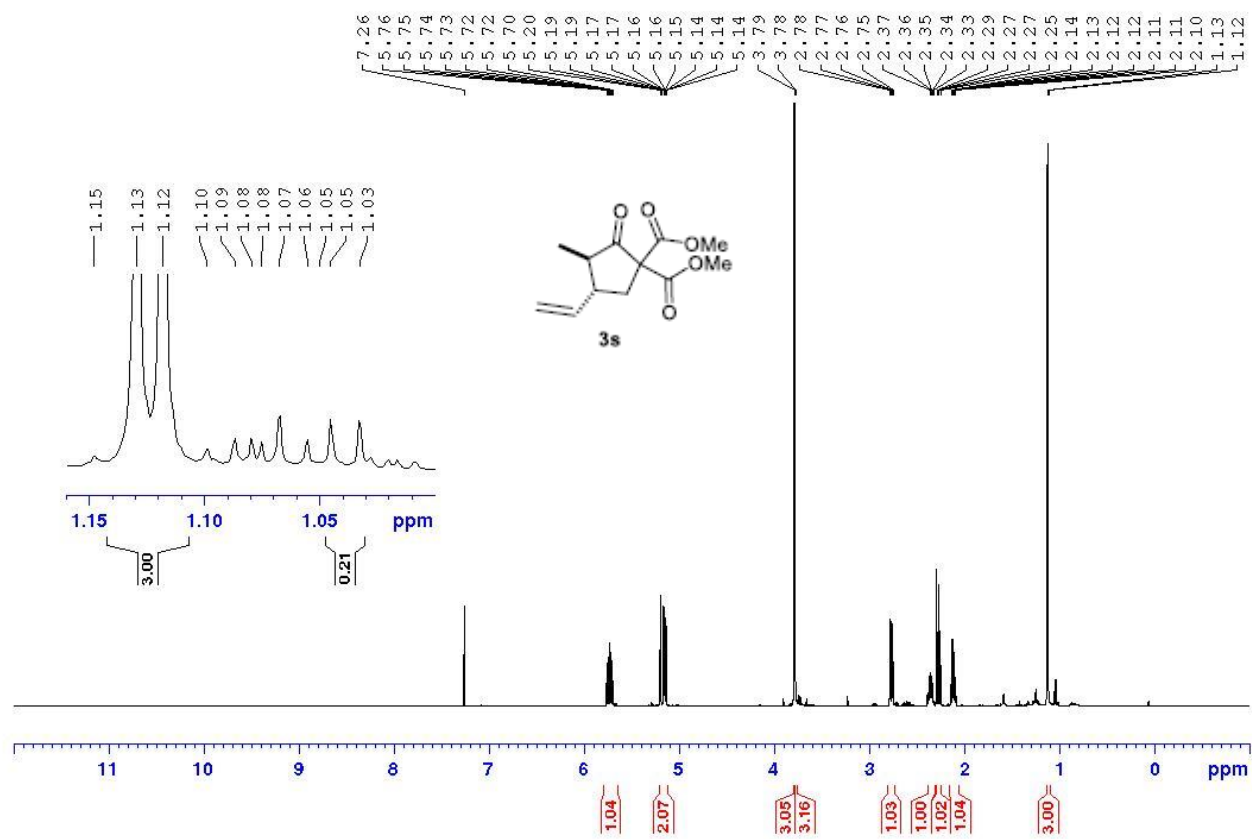
¹H NMR of 3r:



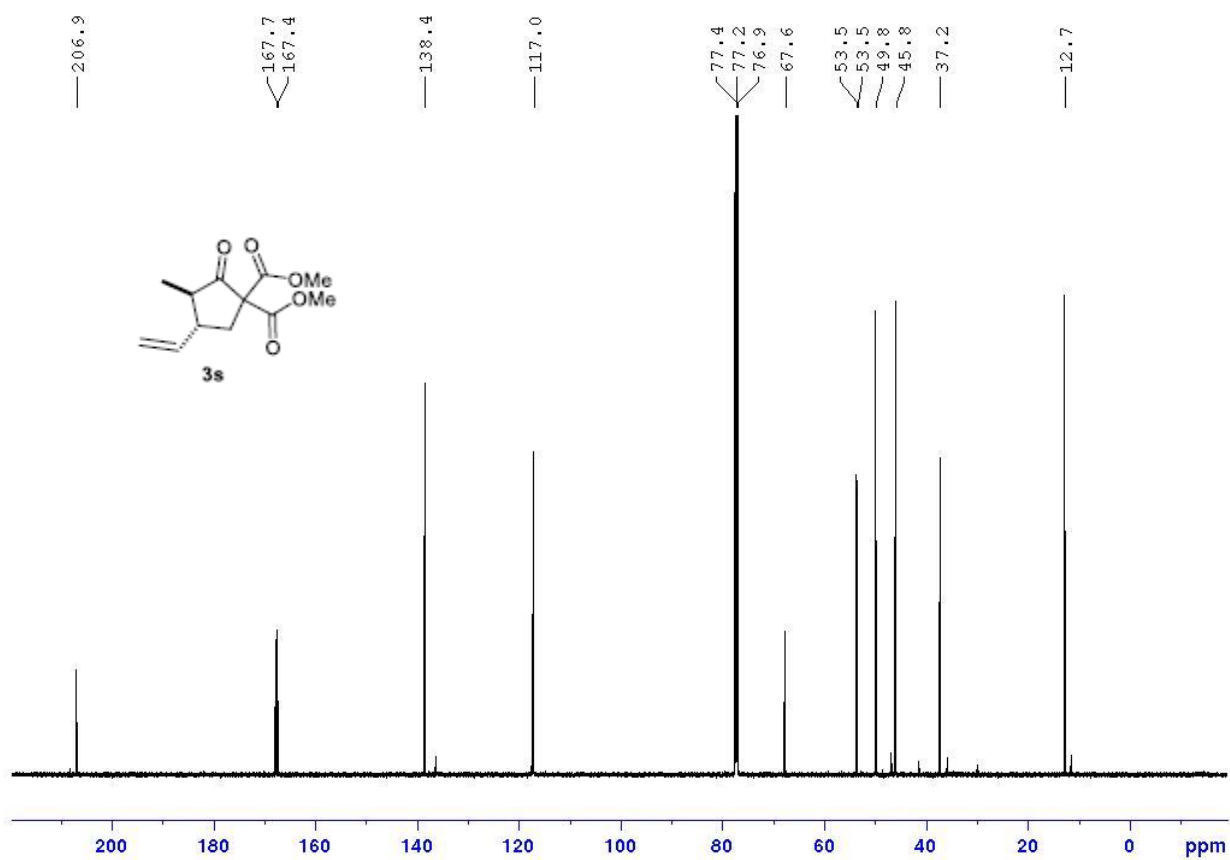
^{13}C NMR of **3r**:



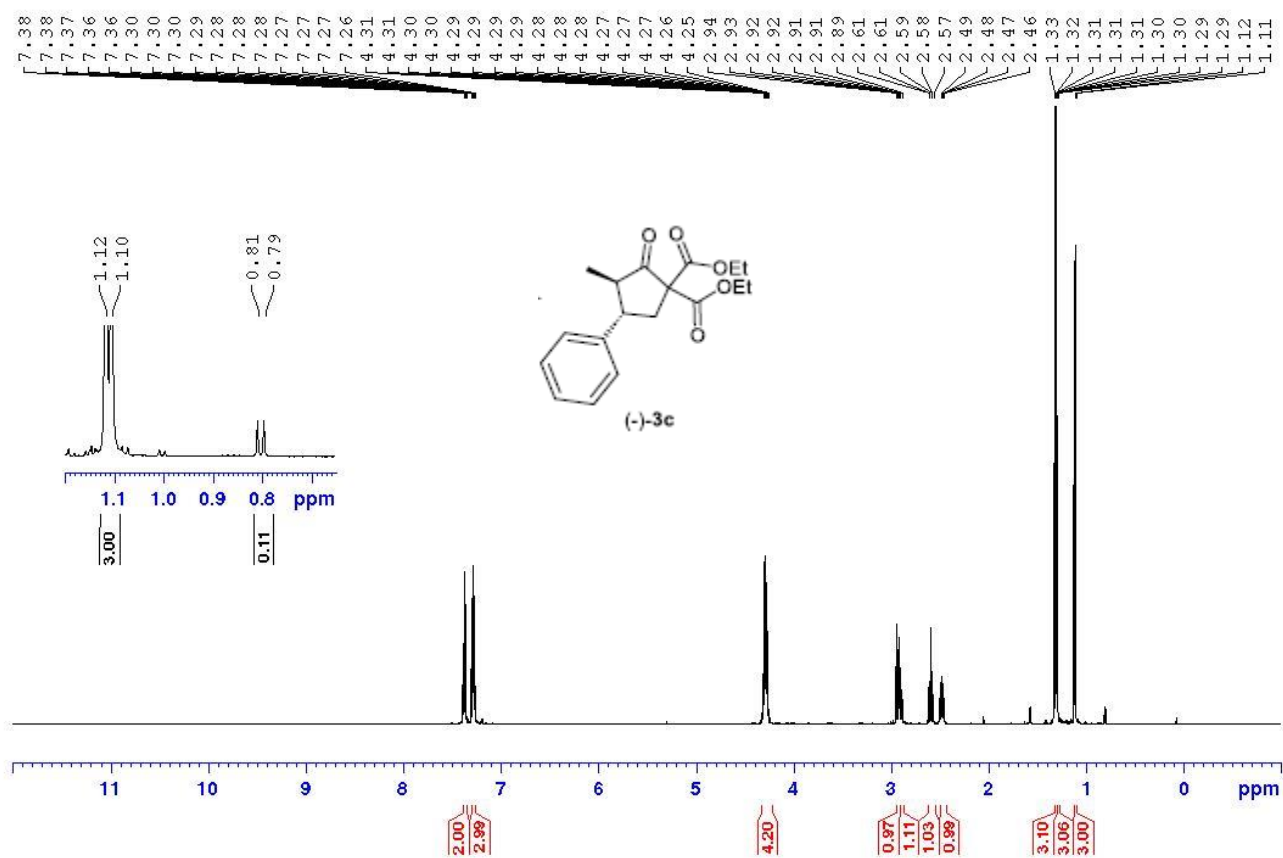
^1H NMR of **3s**:



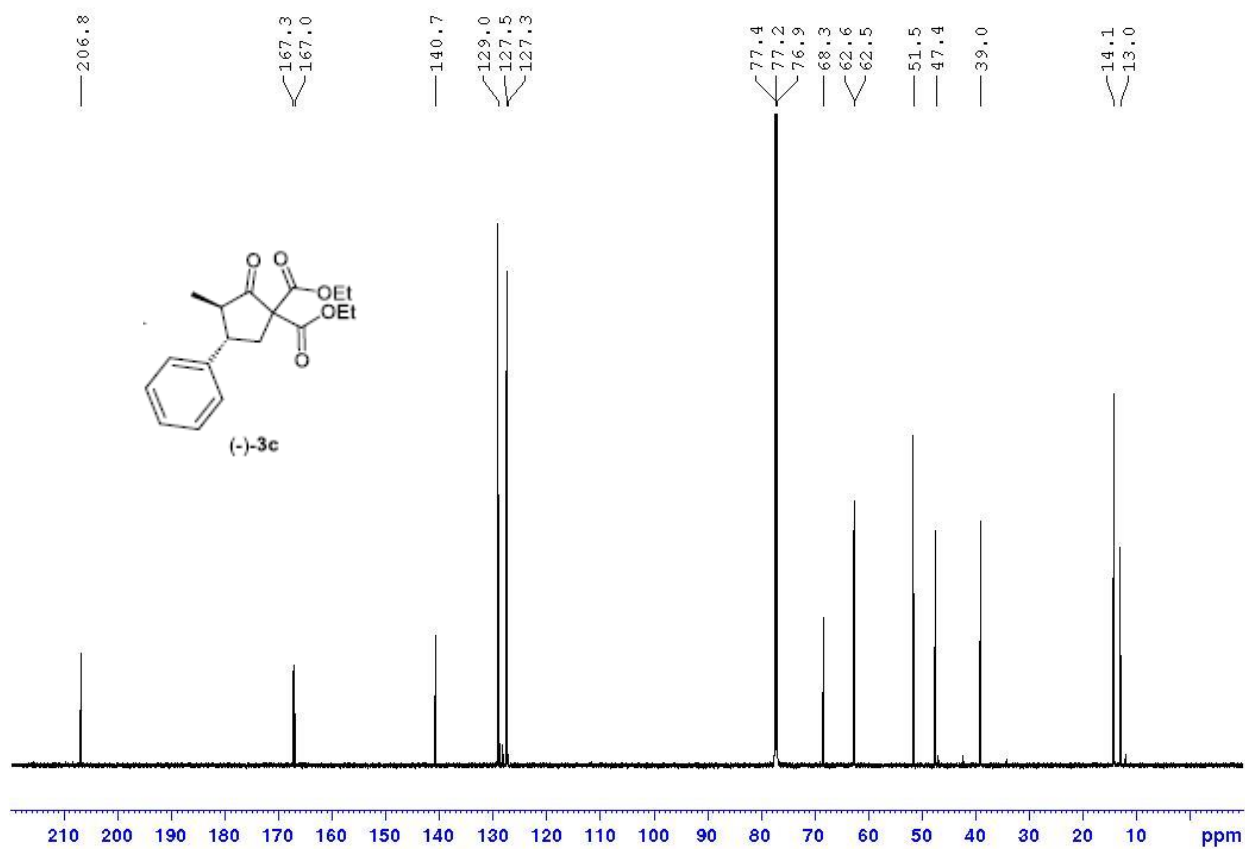
^{13}C NMR of **3s**:



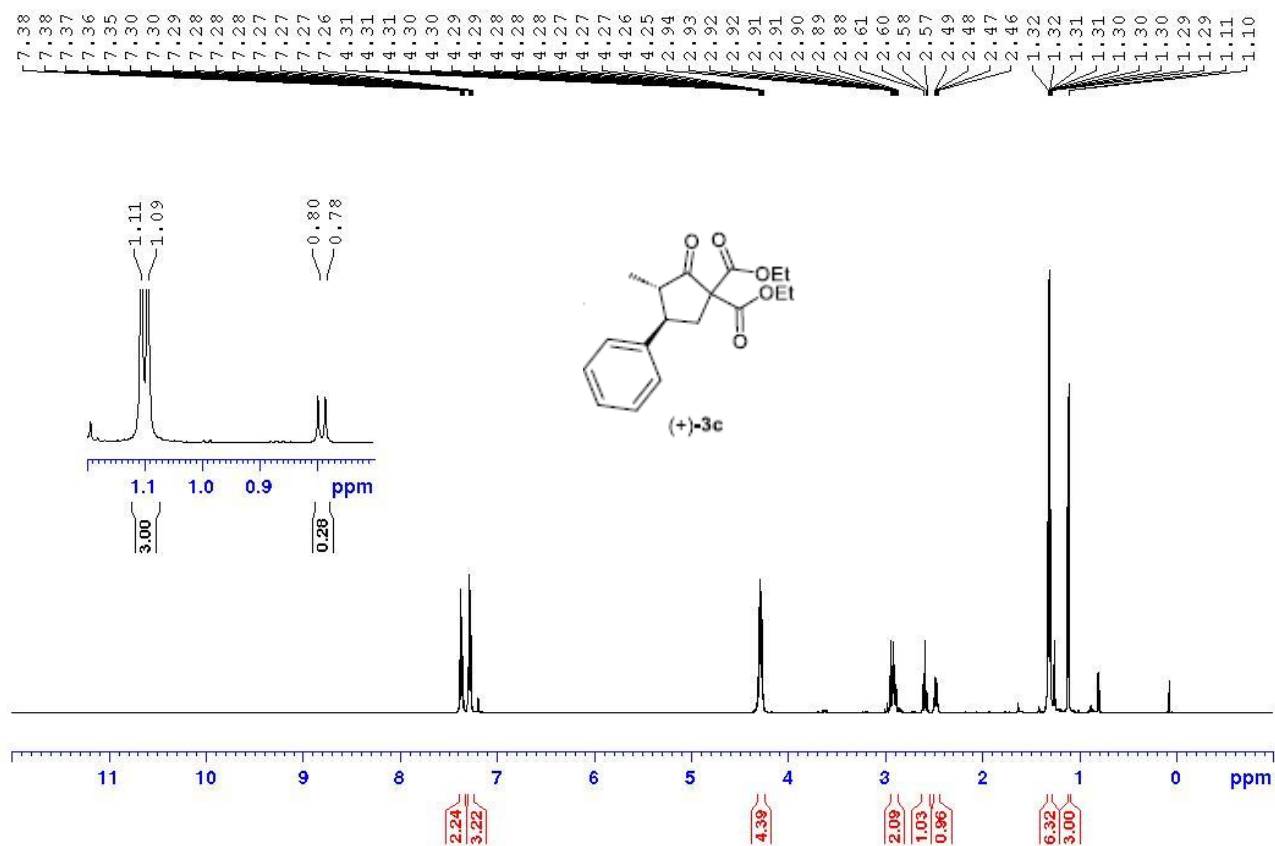
¹H NMR of (-)-3c:



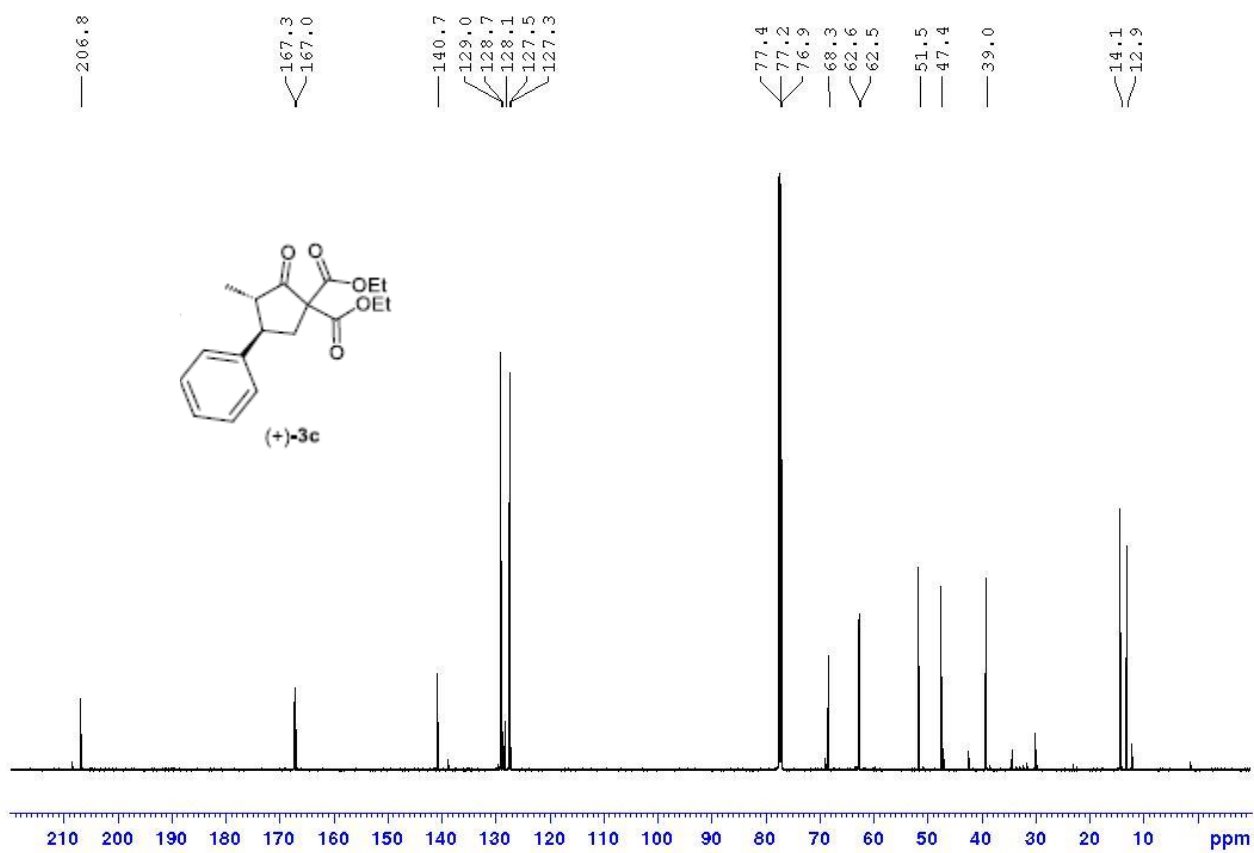
^{13}C NMR of (-)-**3c**:



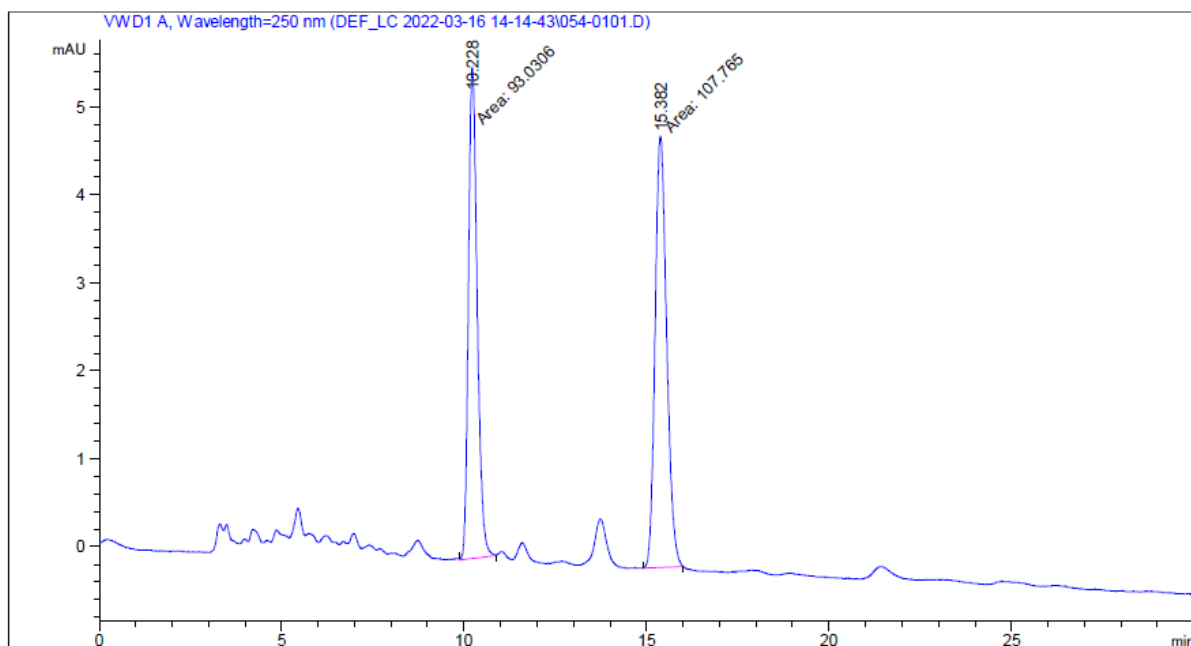
¹H NMR of (+)-3c:



^{13}C NMR of (+)-**3c**:



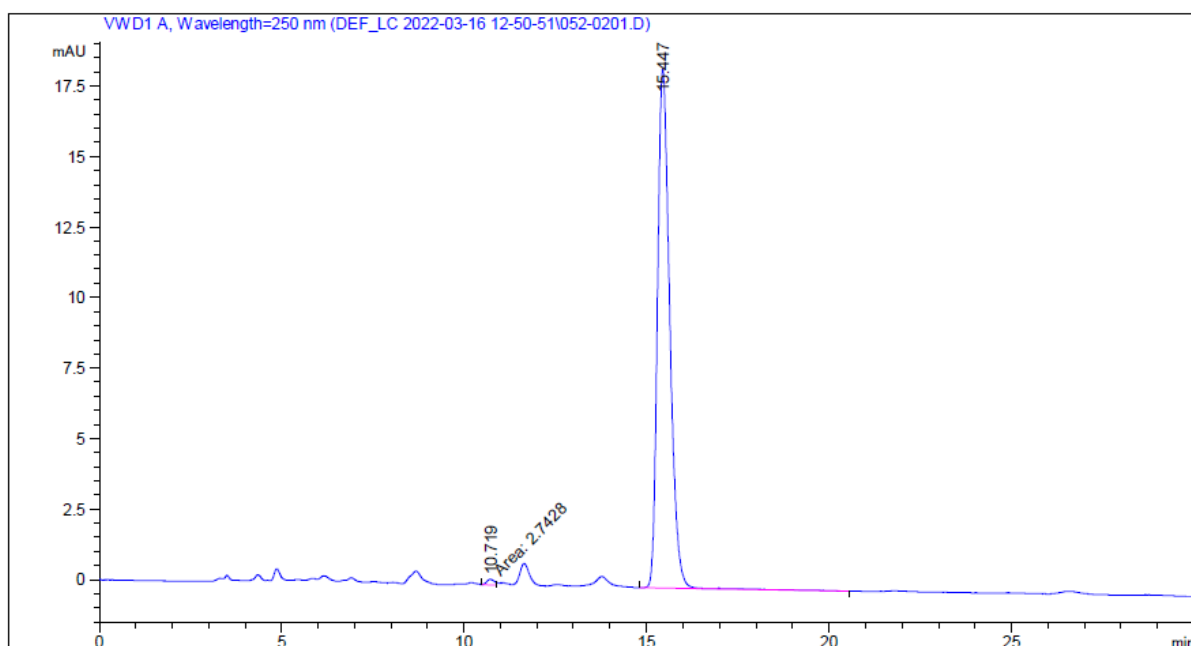
HPLC of (±)-3c:



Signal 1: VWD1 A, Wavelength=250 nm

Peak #	RetTime [min]	Type	Width [min]	Area [mAU*s]	Height [mAU]	Area %
1	10.228	MM	0.2772	93.03059	5.59353	46.3310
2	15.382	MM	0.3662	107.76504	4.90498	53.6690
Totals :				200.79562	10.49851	

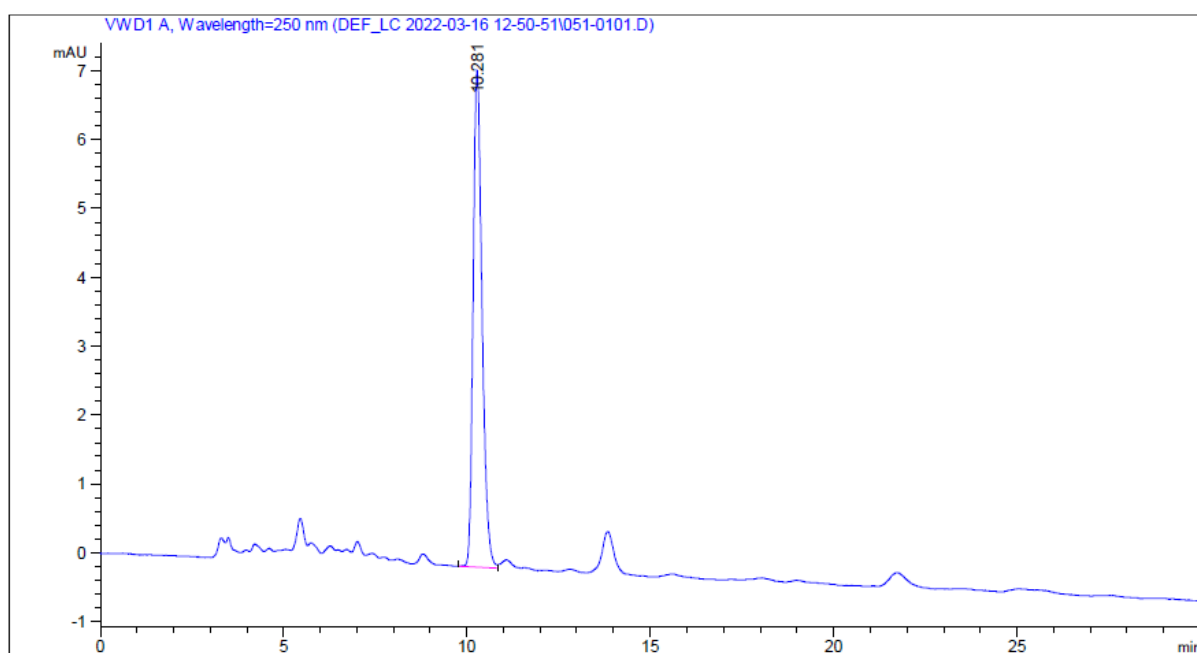
HPLC of (-)-3c:



Signal 1: VWD1 A, Wavelength=250 nm

Peak #	RetTime [min]	Type	Width [min]	Area [mAU*s]	Height [mAU]	Area %
1	10.719	MF	0.2333	2.74280	1.95942e-1	0.6335
2	15.447	BB	0.3661	430.19397	18.40050	99.3665
Totals :				432.93677	18.59644	

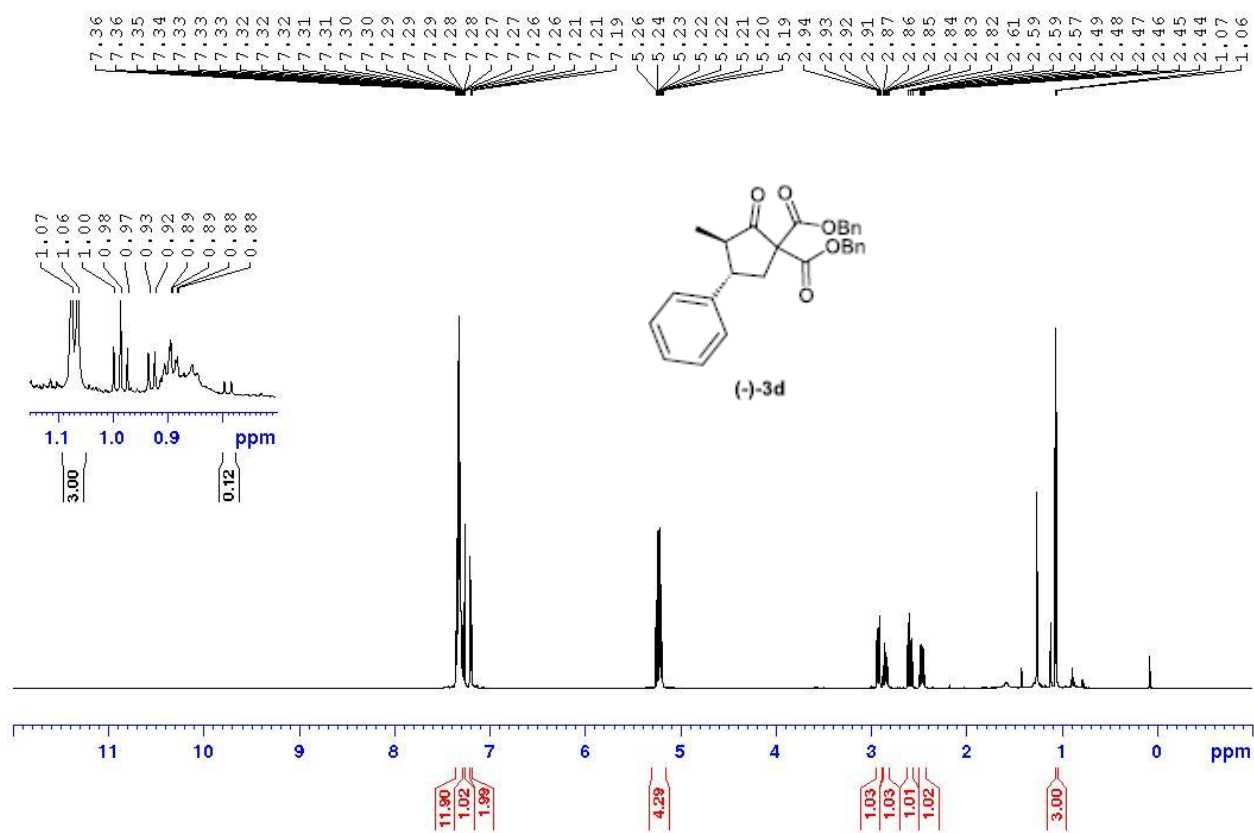
HPLC of (+)-3c:



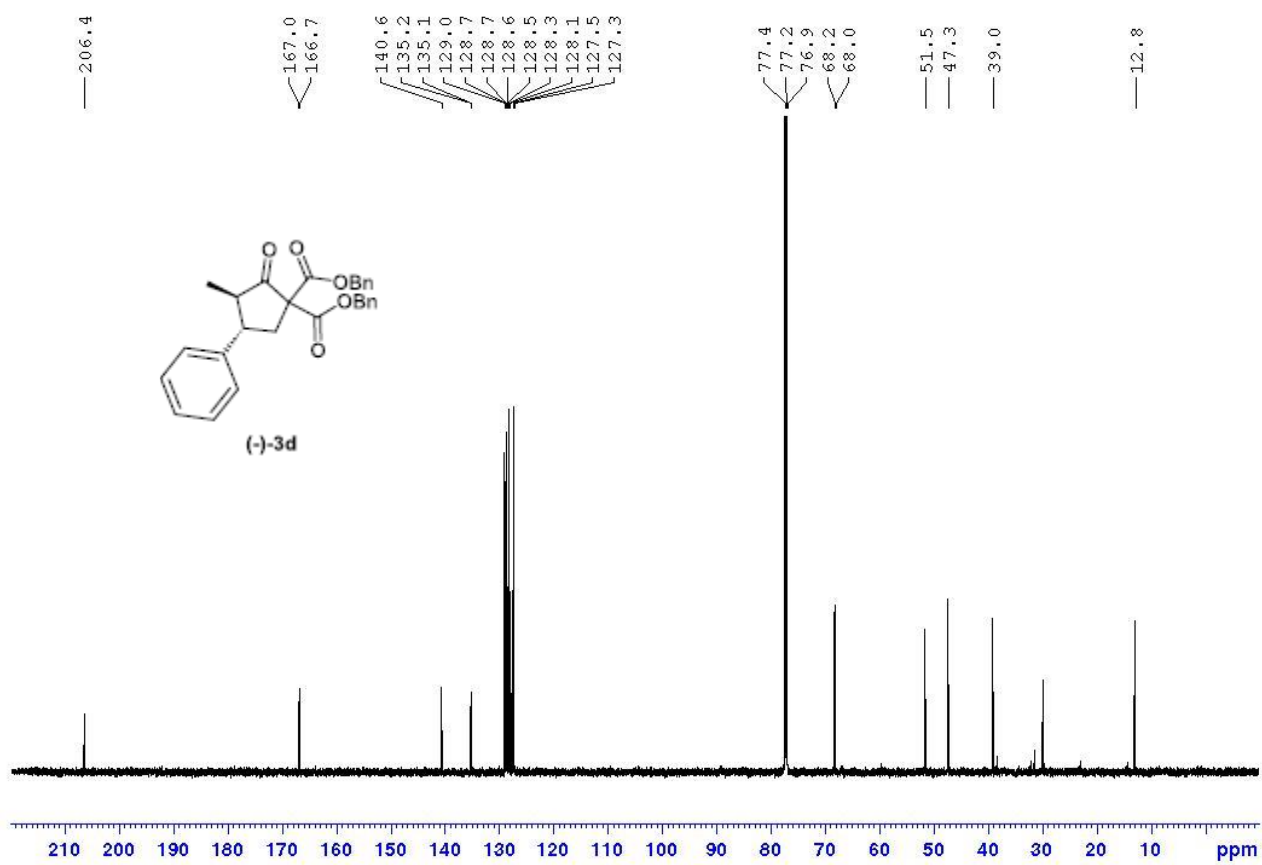
Signal 1: VWD1 A, Wavelength=250 nm

Peak #	RetTime [min]	Type	Width [min]	Area [mAU*s]	Height [mAU]	Area %
1	10.281	BV	0.2678	121.96597	7.19289	100.0000
Totals :				121.96597	7.19289	

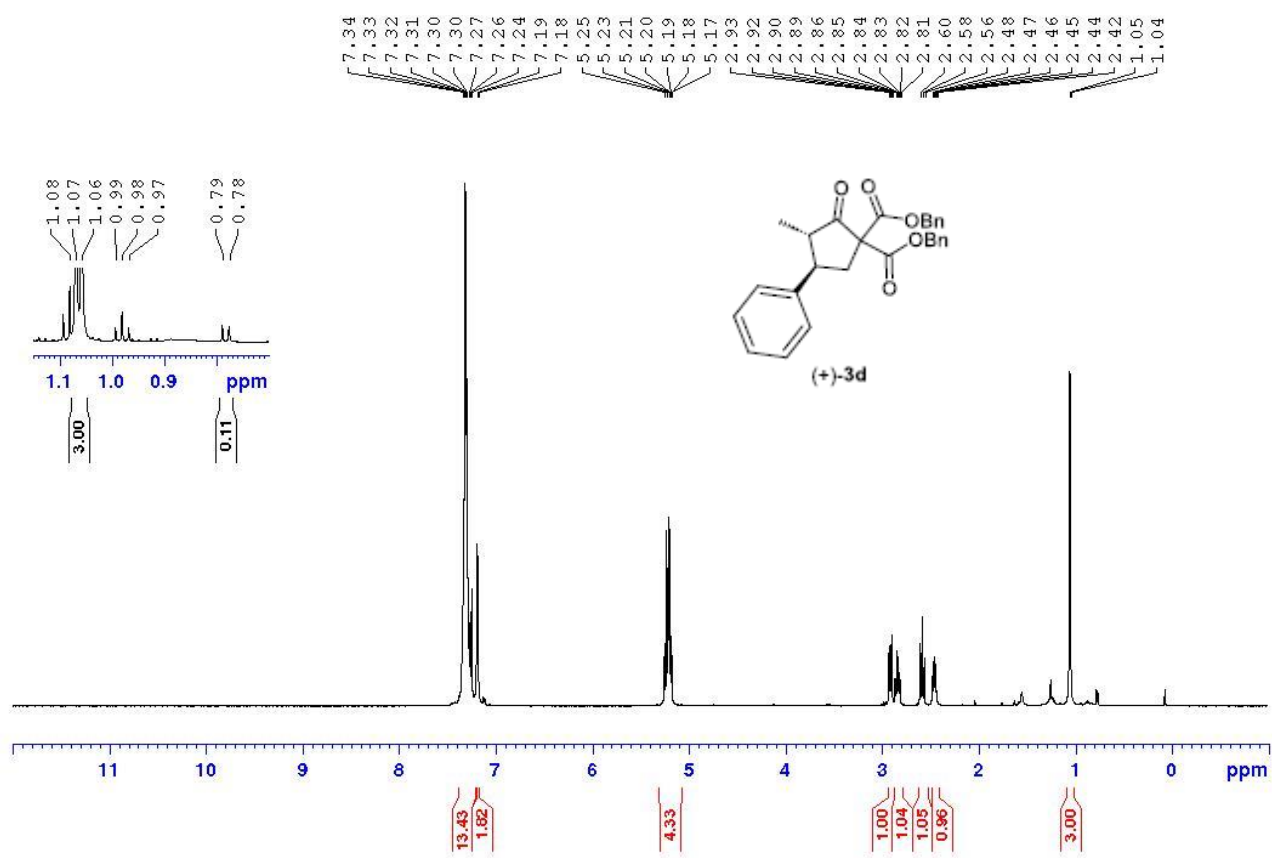
¹H NMR of (-)-3d:



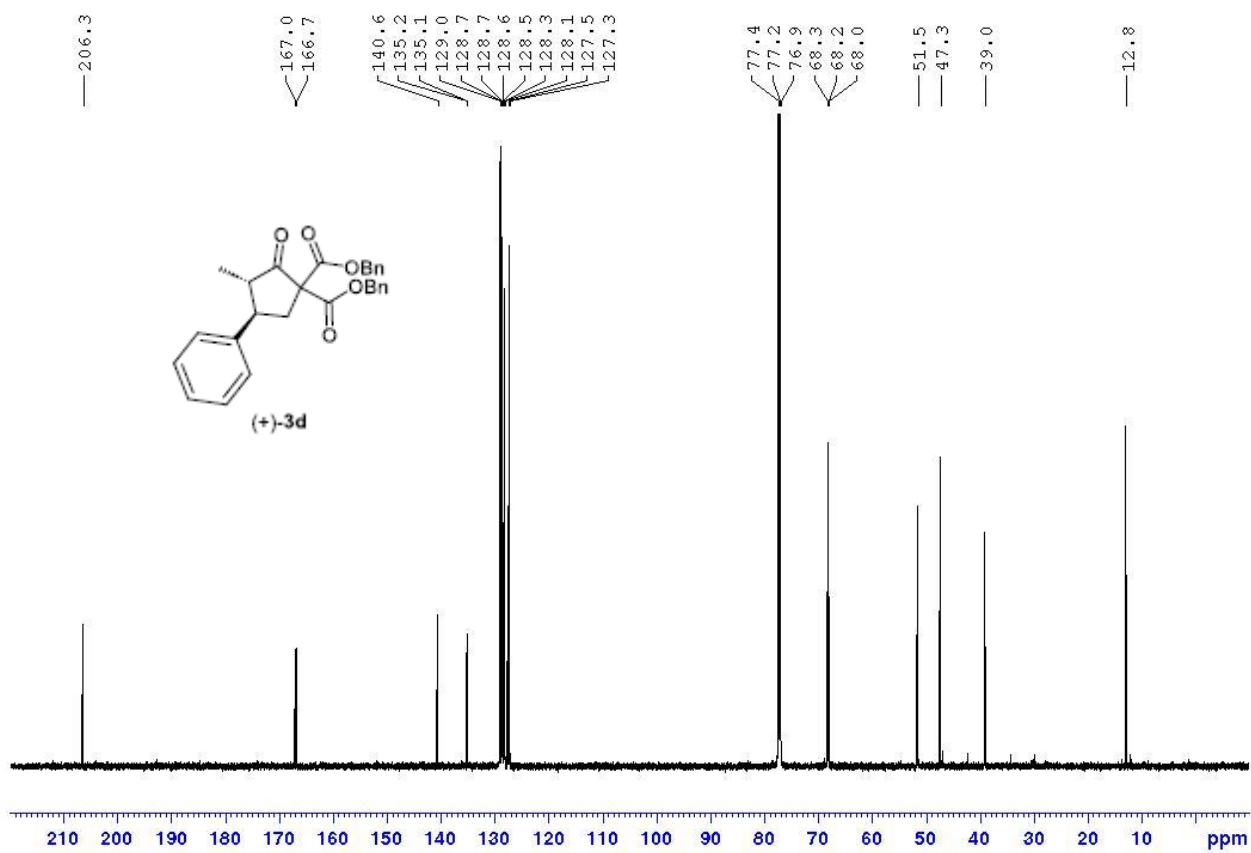
^{13}C NMR of (-)-**3d**:



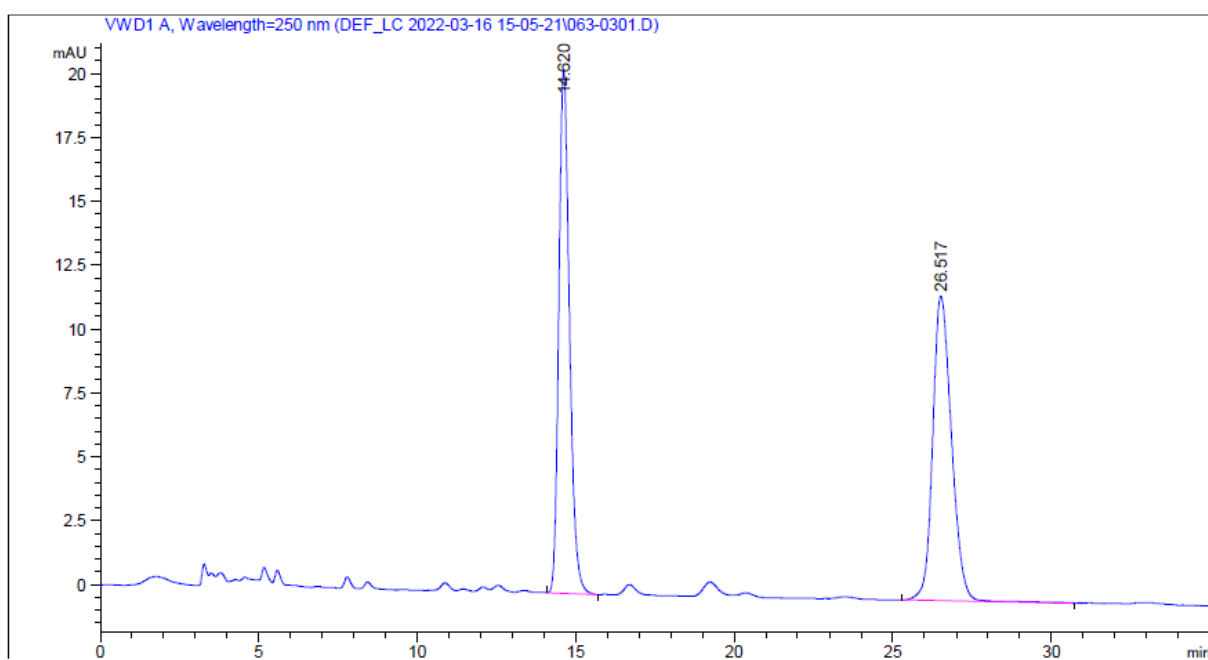
¹H NMR of (+)-3d:



^{13}C NMR of (+)-**3d**:



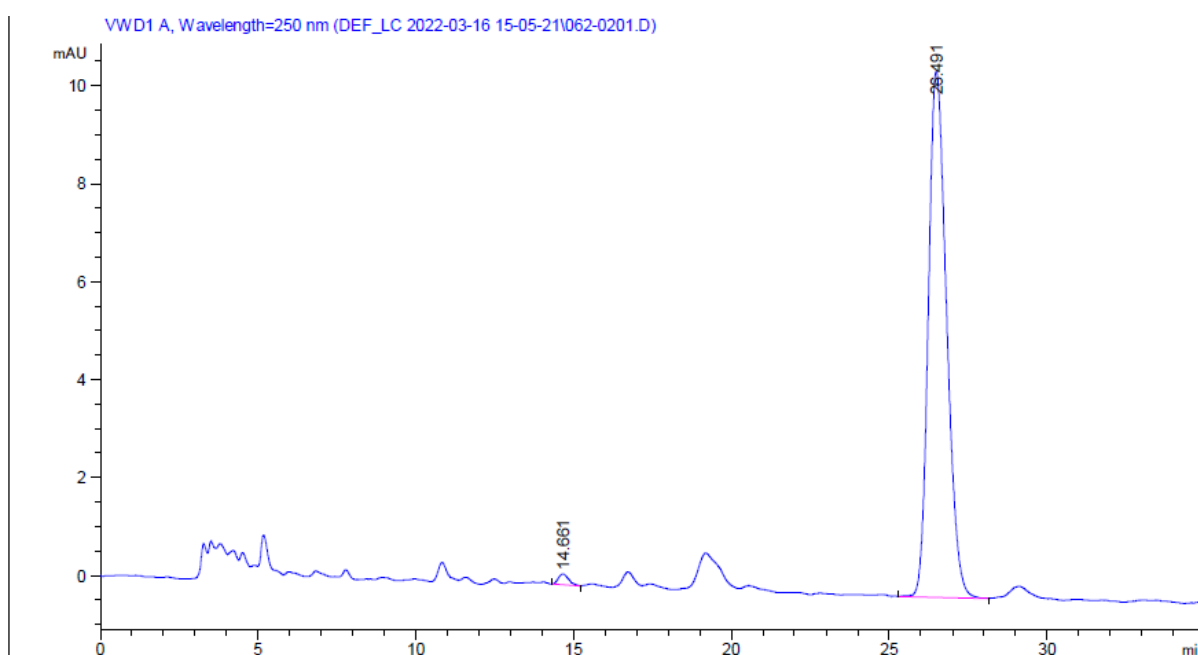
HPLC of (±)-3d:



Signal 1: VWD1 A, Wavelength=250 nm

Peak #	RetTime [min]	Type	Width [min]	Area [mAU*s]	Height [mAU]	Area %
1	14.620	BB	0.3606	478.25949	20.42881	49.3090
2	26.517	BB	0.6327	491.66290	11.92206	50.6910
Totals :				969.92239	32.35087	

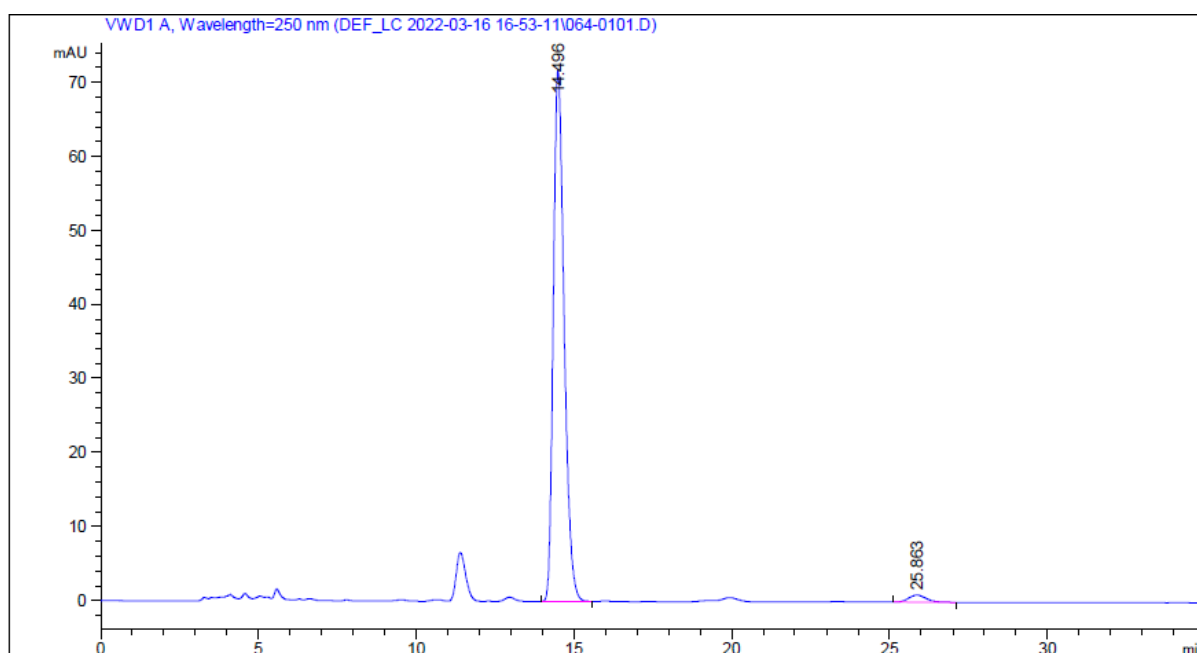
HPLC of (-)-3d:



Signal 1: VWD1 A, Wavelength=250 nm

Peak #	RetTime [min]	Type	Width [min]	Area [mAU*s]	Height [mAU]	Area %
1	14.661	BB	0.3508	4.99249	2.21160e-1	1.1506
2	26.491	BB	0.6236	428.90231	10.73315	98.8494
Totals :				433.89480	10.95431	

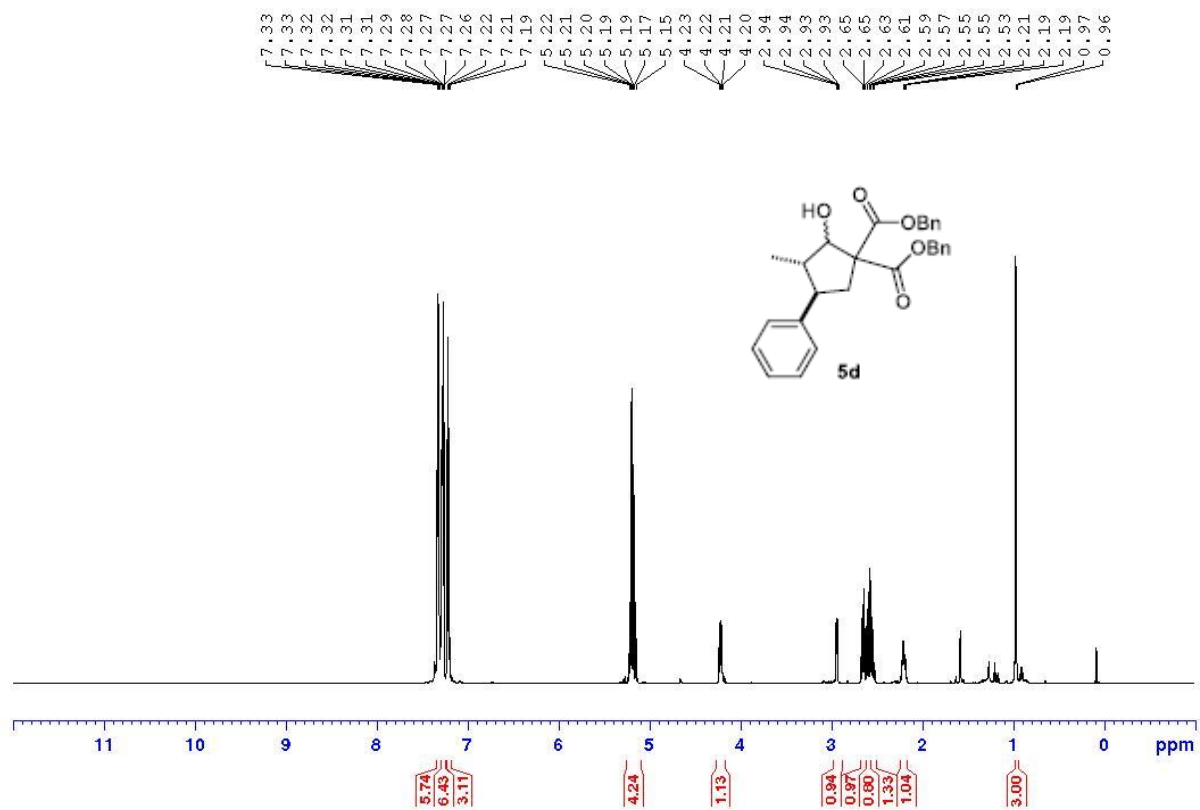
HPLC of (+)-3d:



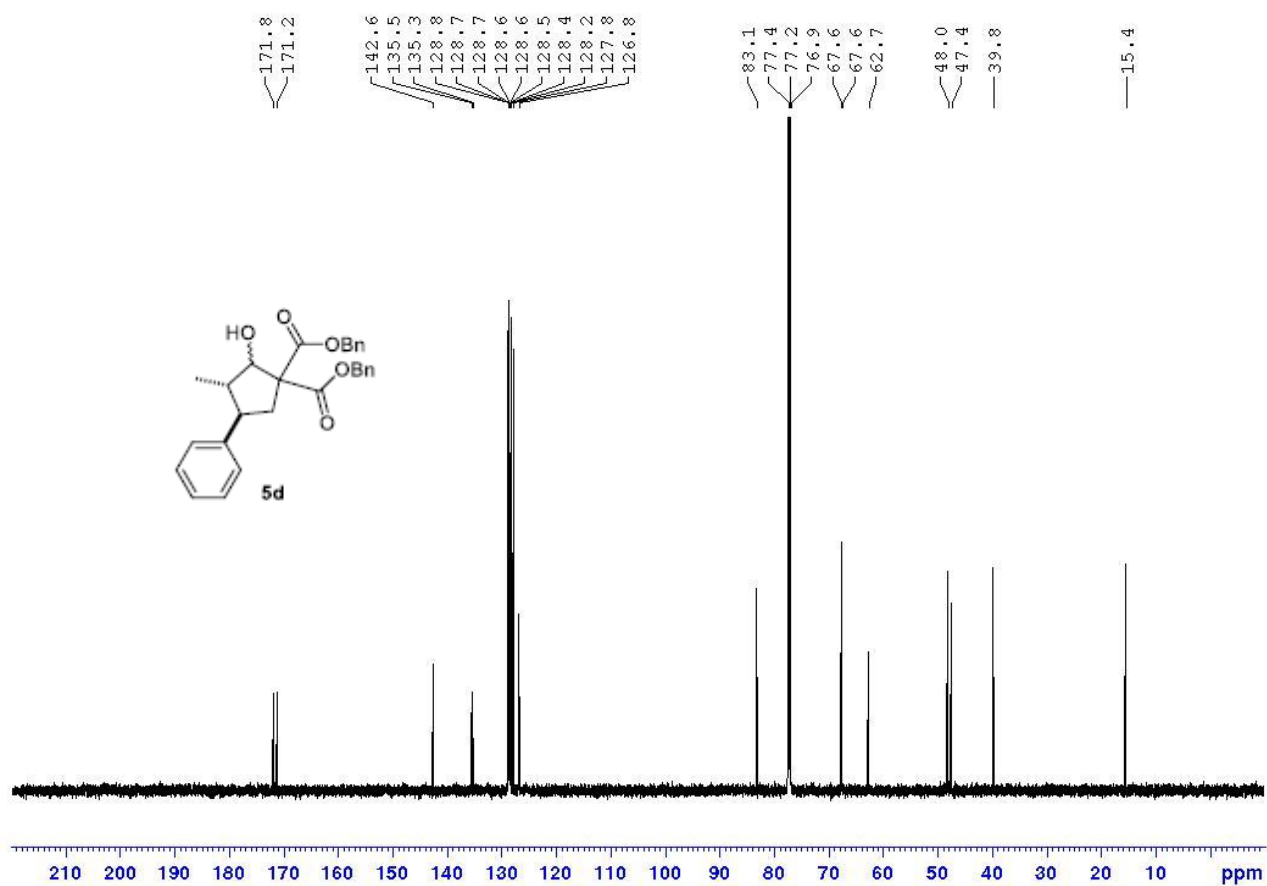
Signal 1: VWD1 A, Wavelength=250 nm

Peak #	RetTime [min]	Type	Width [min]	Area [mAU*s]	Height [mAU]	Area %
1	14.496	BB	0.3711	1707.18237	71.68500	97.8788
2	25.863	BB	0.5953	36.99744	9.60217e-1	2.1212
Totals :				1744.17982	72.64521	

¹H NMR of 5d:



¹³C NMR of **5d**:



2D NOESY for 3c:

