

## **Insights into Tumor Size-Dependent Nanoparticle Accumulation Using Deformed Organosilica Nanoprobes**

Yuchen Miao<sup>1</sup>, Hengda Du<sup>1</sup>, Wenqing Zhang<sup>1</sup>, Dongliang Yang<sup>5</sup>, Kaiyuan Tang<sup>1</sup>, Qiang Fang<sup>1, 3, 4\*</sup>,  
Junjie Zhang<sup>1, 2\*</sup>

<sup>1</sup>School of Fundamental Sciences, Bengbu Medical University, Bengbu, Anhui Province 233030, China;

<sup>2</sup>State Key Laboratory of Organic Electronics and Information Displays & Institute of Advanced Materials (IAM), Nanjing University of Posts & Telecommunications, 9 Wenyuan Road, Nanjing 210023, China;

<sup>3</sup>Department of Microbiology and Parasitology, Bengbu Medical University, Bengbu, Anhui Province 233030, China;

<sup>4</sup>Anhui Key Laboratory of Infection and Immunity, Bengbu Medical University, Bengbu, Anhui Province 233030, China;

<sup>5</sup>Key Laboratory of Flexible Electronics (KLOFE) and Institute of Advanced Materials (IAM), School of Physical and Mathematical Sciences, Nanjing Tech University (NanjingTech), Nanjing 211816, China.

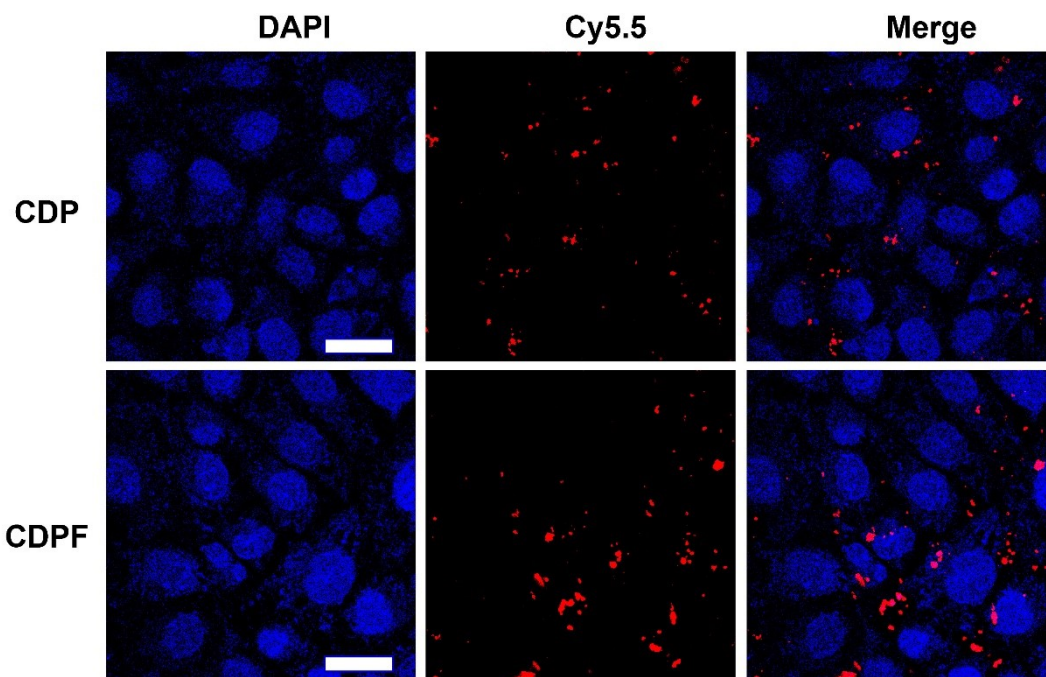


Figure s1. Confocal microscopy images depicting the cellular uptake of CDPF and CDP by 4T1 breast cancer cells. The cells were incubated with different nanoplatform for 8 h. Scale bar: 25  $\mu\text{m}$ .