

Rapid, microwave-assisted deposition of anisotropic silver nanostructures on various substrates

K. S. Choudhari^a, S. A. Shivashankar^b and Suresh D. Kulkarni^{a*}

^aDepartment of Atomic and Molecular Physics, Manipal Academy of Higher Education, Manipal, Karnataka, India-576104

^bCentre for Nano Science and Engineering, Indian Institute of Science, Bangalore, India-560012

*Corresponding Author email: suresh.dk@manipal.edu

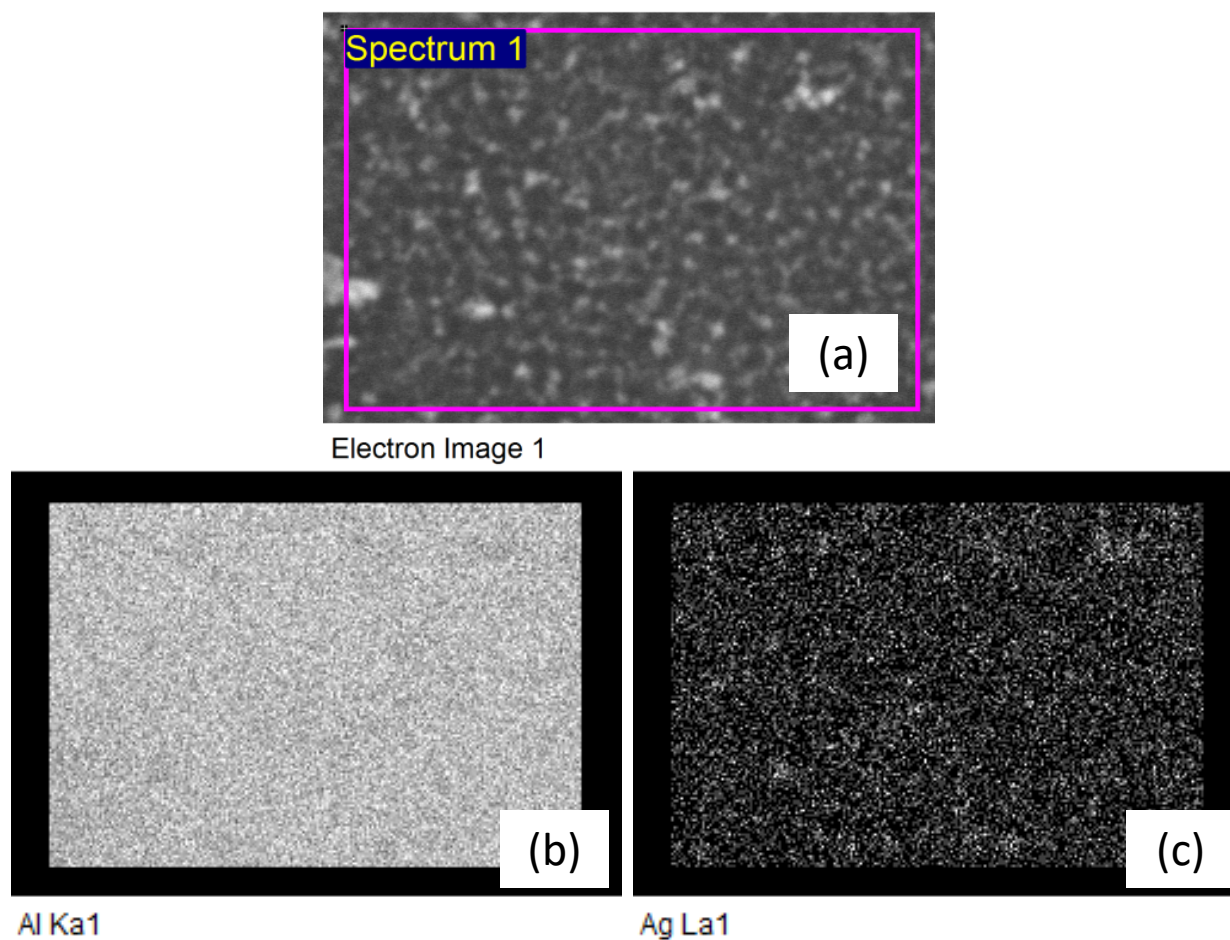


Fig S1. (a) FESEM micrograph of Nano-patterned aluminum and (b-c) its two-dimensional elemental maps for showing the distribution of Aluminum and Silver, respectively.