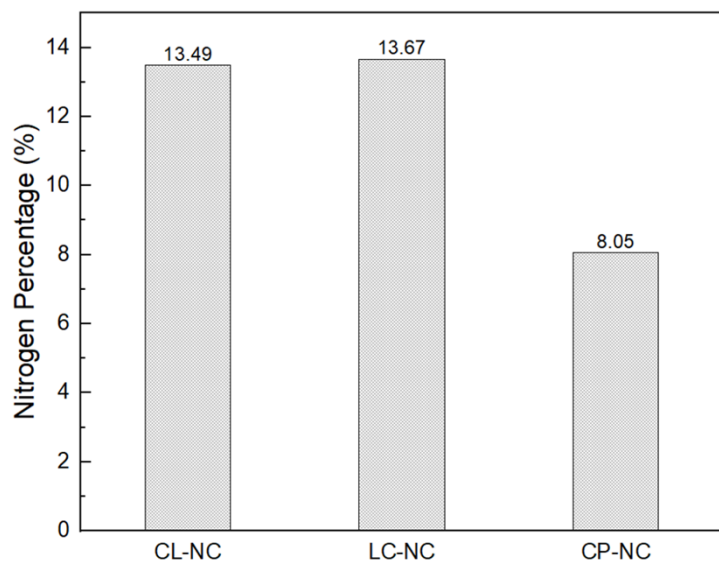


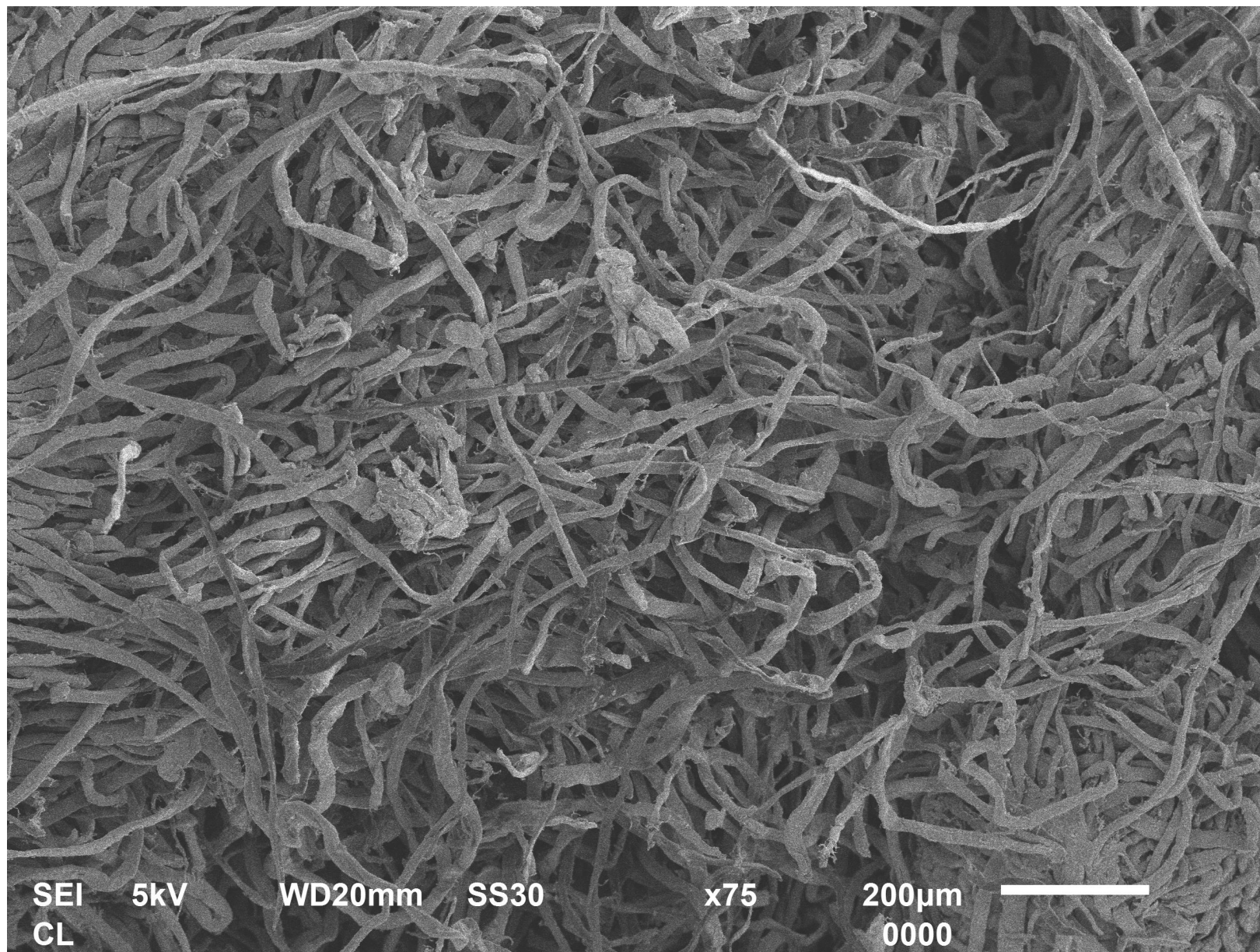
Electronic Supplementary Material (ESI) for RSC Advances



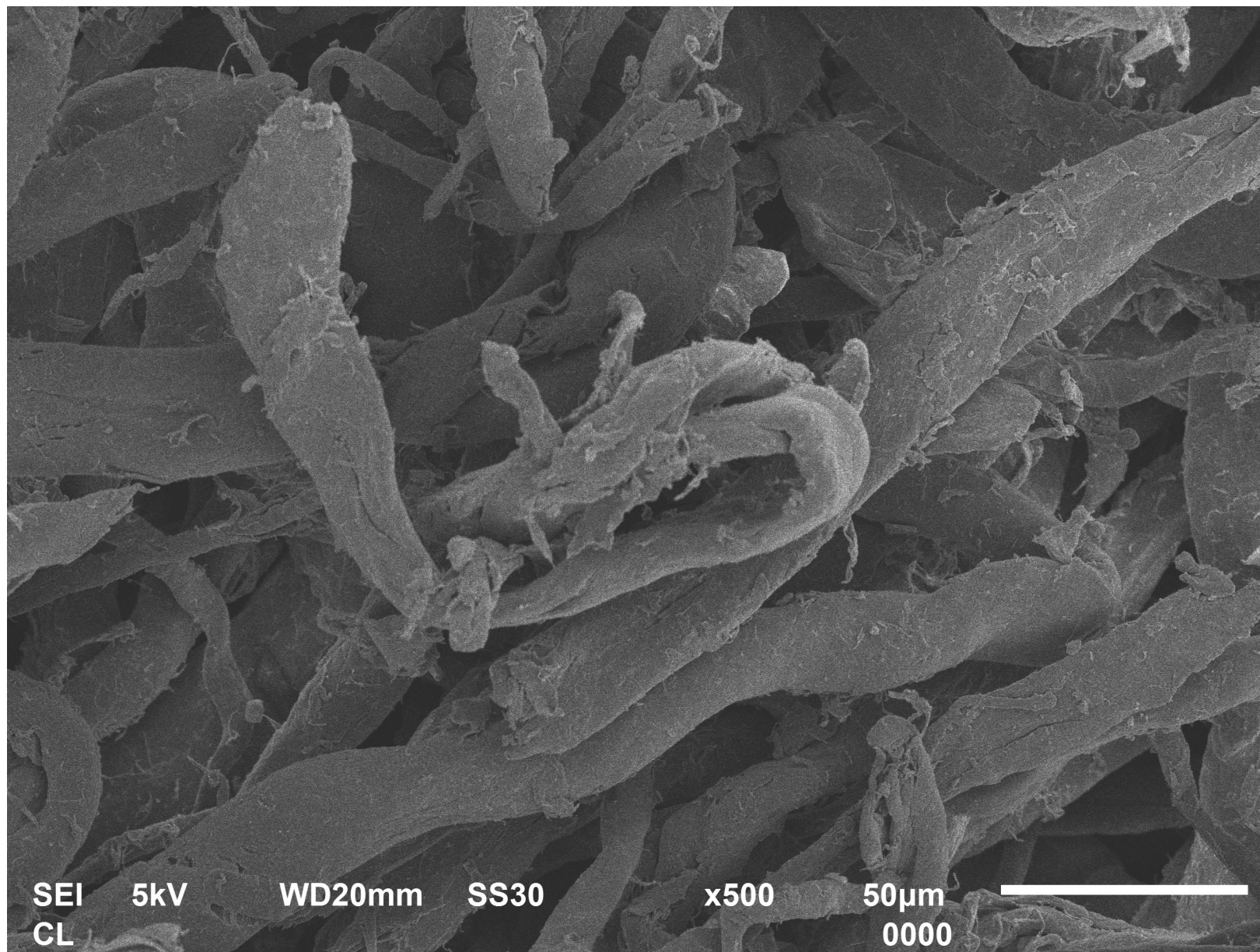
Nitrogen content of CL-NC, LC-NC, and CP-NC

Diffraction angle and d_{hkl} of pre and post-nitrated celluloses

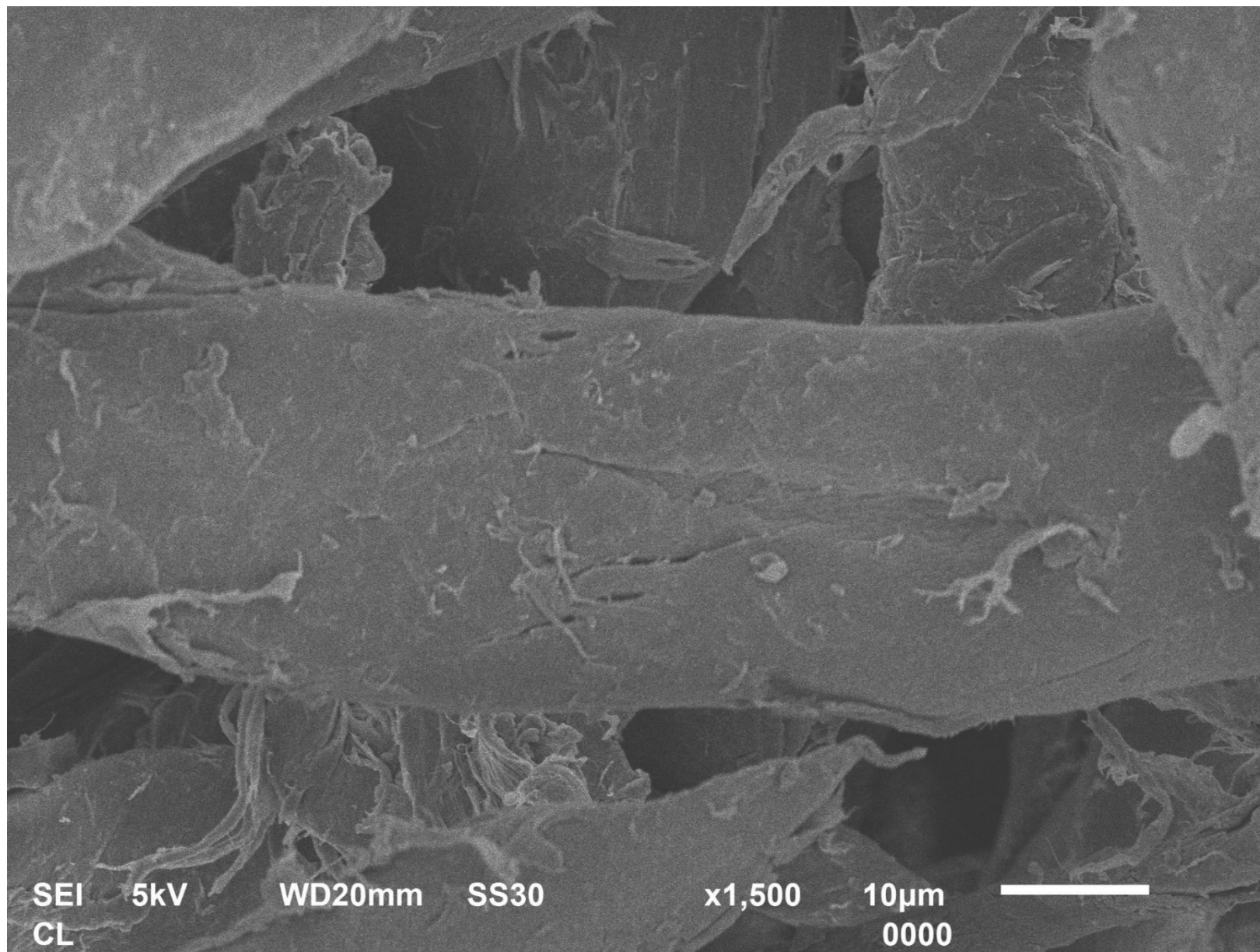
Sample	2θ (1 0 1)	θ (1 0 1)	d_{hkl} (Å)
CL	15.07	7.54	5.87
LCC	14.68	7.34	6.03
CPC	15.70	7.85	5.64
CL-NC (13.49% N)	12.66	6.33	6.99
LC-NC (13.67% N)	12.42	6.21	7.12
CP-NC (8.05% N)	15.66	7.83	5.65



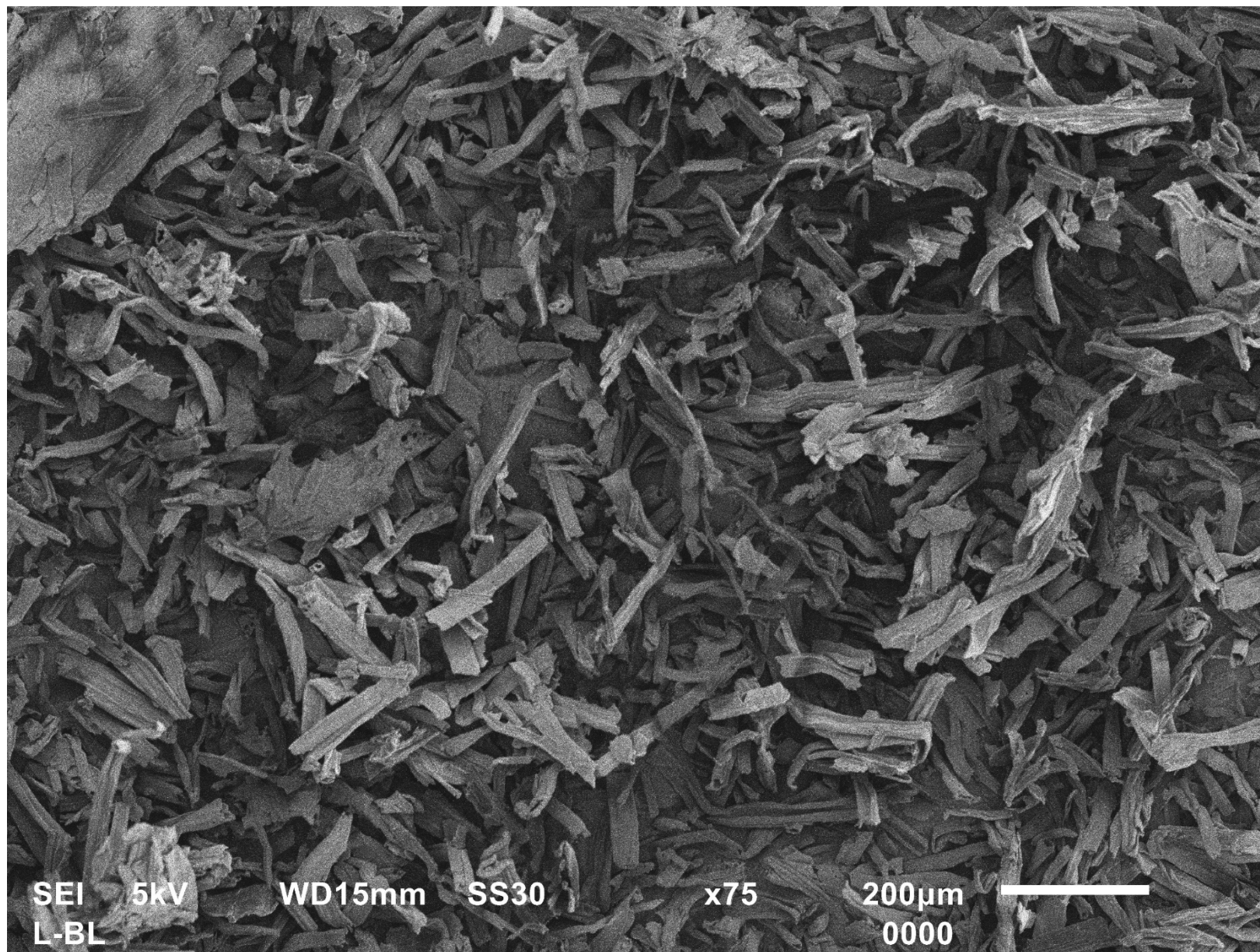
SEM Photomicrograph of Cotton Linter 75x Magnification



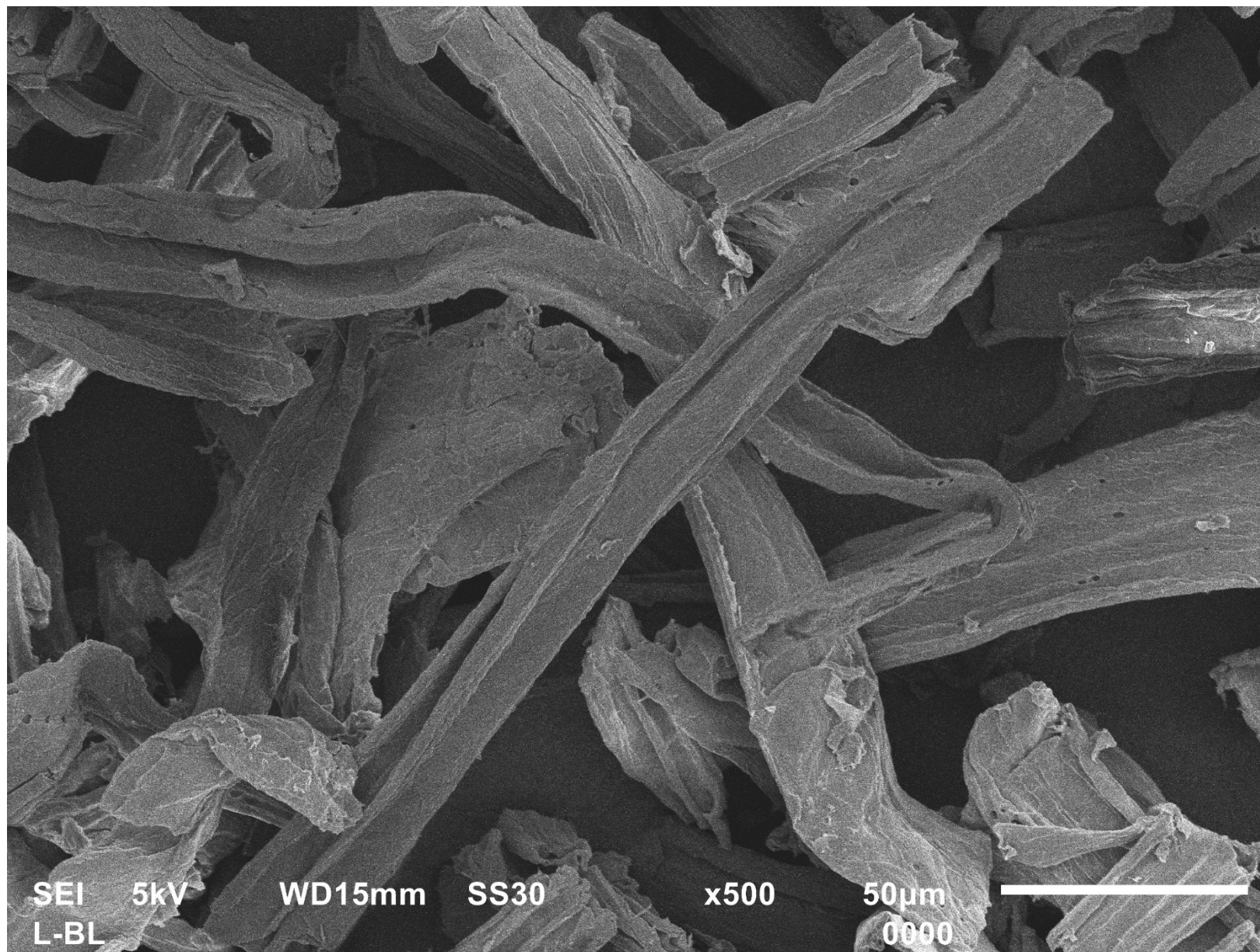
SEM Photomicrograph of Cotton Linter 500x Magnification



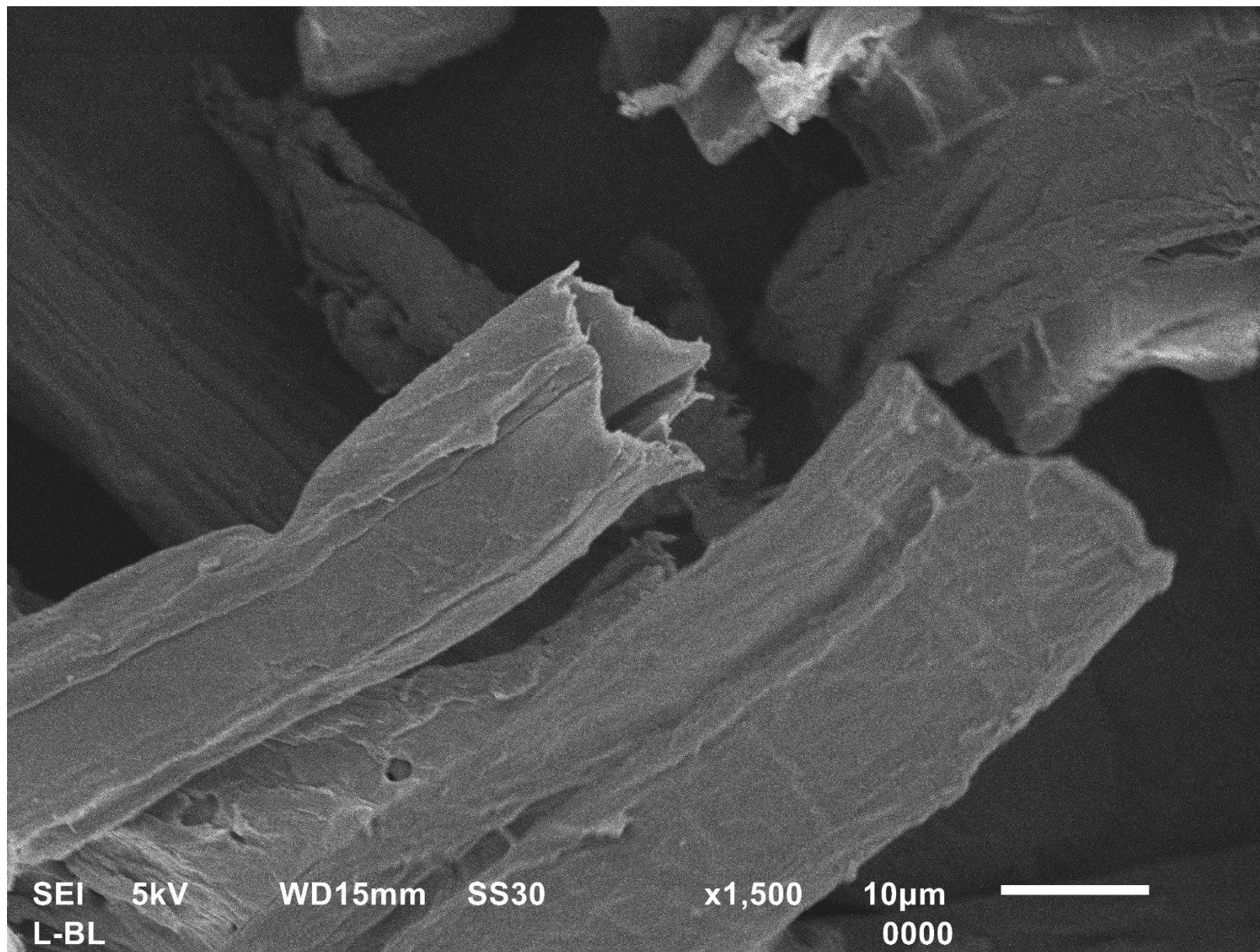
SEM Photomicrograph of Cotton Linter 1500x Magnification



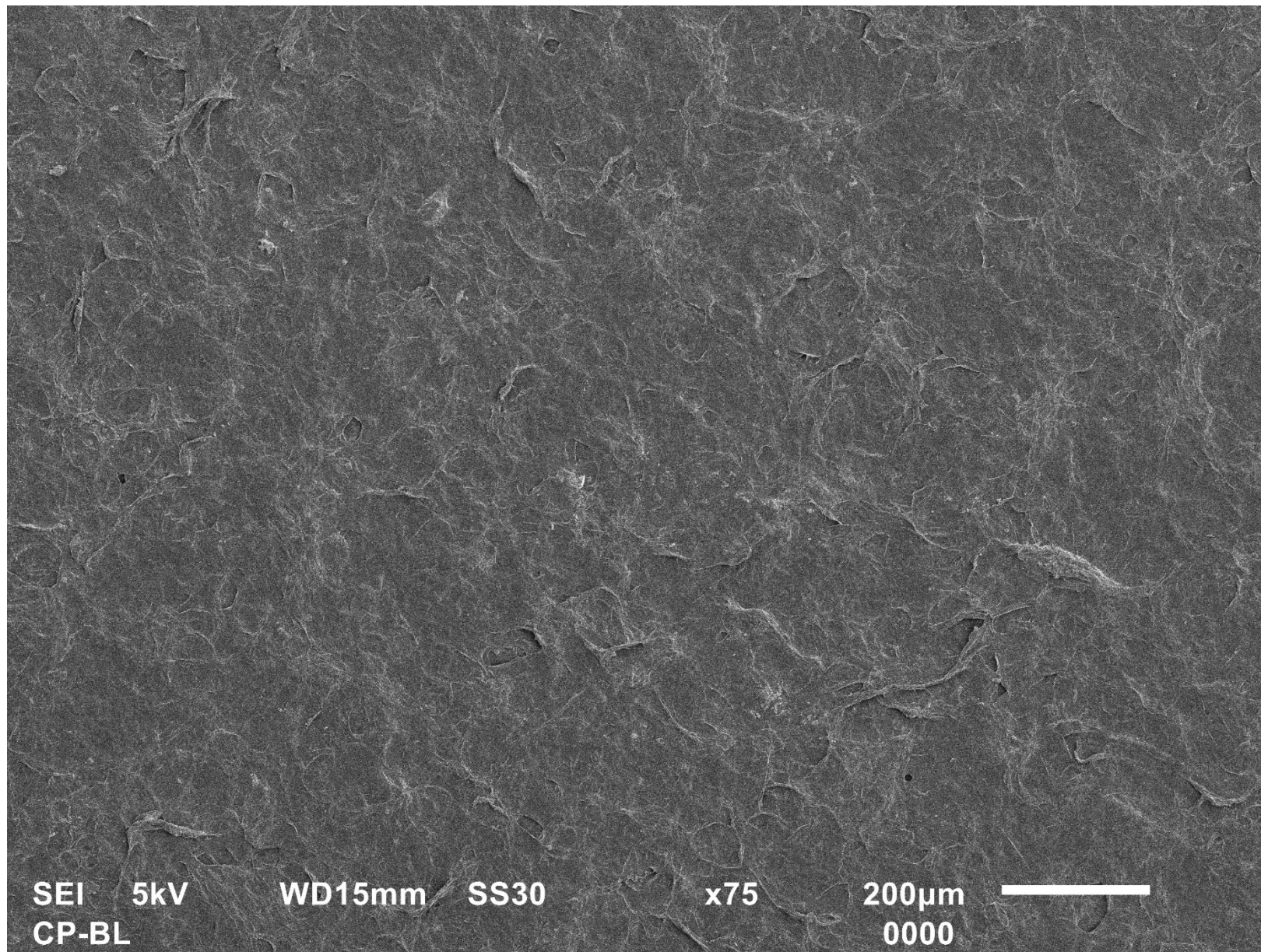
SEM Photomicrograph of Luffa Cylindrica Cellulose 75x Magnification



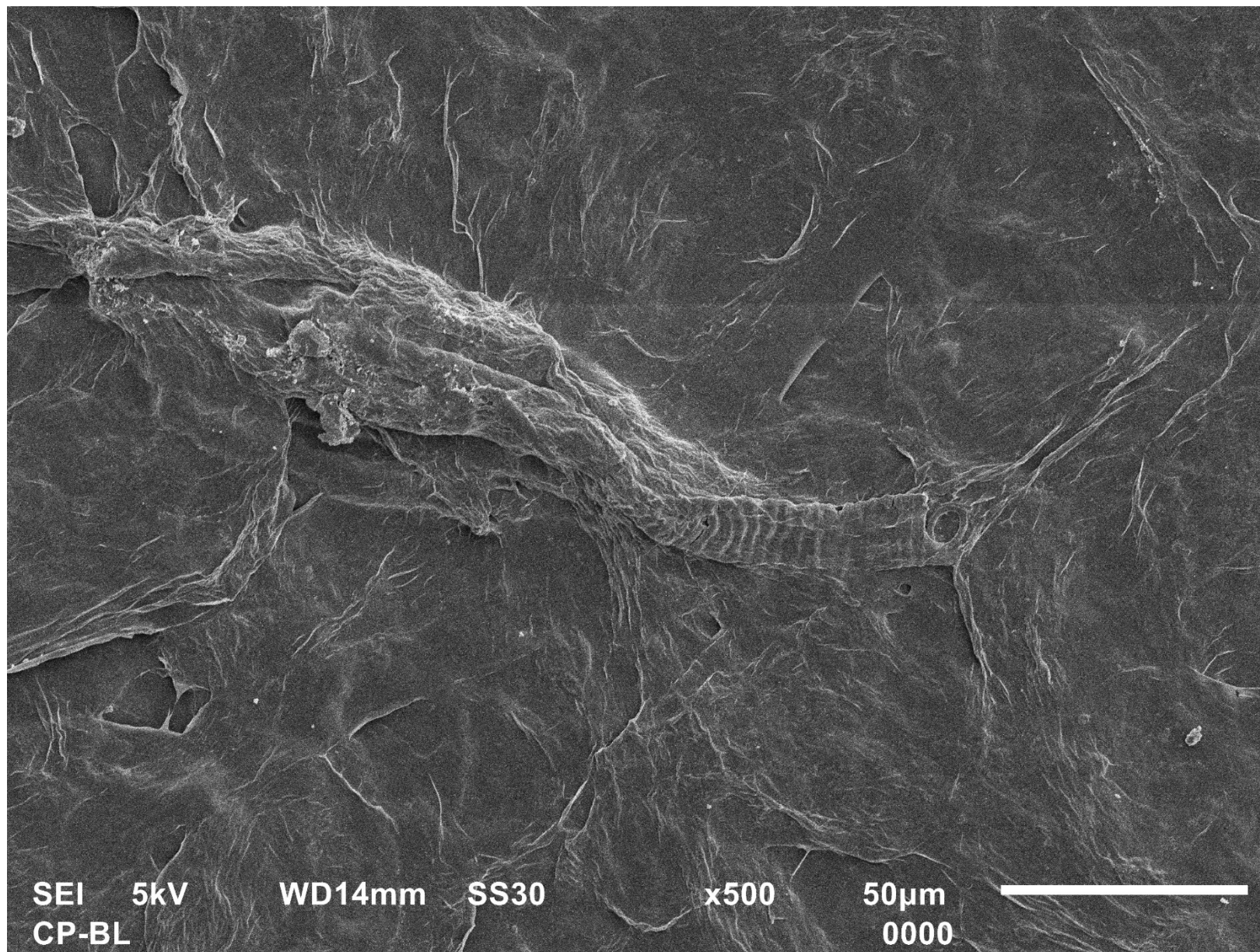
SEM Photomicrograph of Luffa Cylindrica Cellulose 500x Magnification



SEM Photomicrograph of Luffa Cylindrica Cellulose 1500x Magnification



SEM Photomicrograph of Arabica Coffee Pulp Cellulose 75x Magnification



SEM Photomicrograph of Arabica Coffee Pulp Cellulose 500x Magnification

