

Fig.1. The selective ion chromatograms for each sulfonamide of blank forage grasses matrix spiked at 20 $\mu\text{g/L}$. The A represents a quantitative ion pair chromatogram, while B denotes a qualitative ion pair chromatogram.

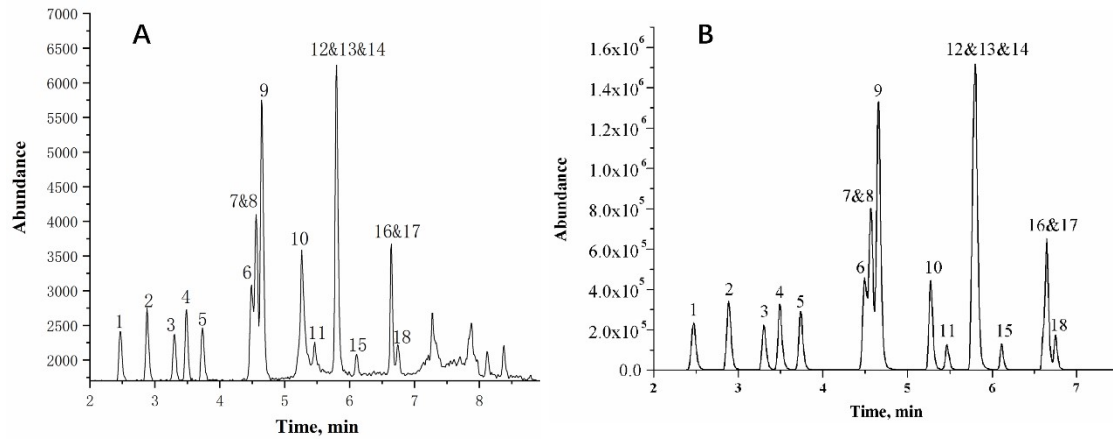


Fig.2. The total ion flow chromatogram of LOD (0.1 $\mu\text{g/kg}$, A) and a standard solution with a concentration of 20 $\mu\text{g/L}$ (B).