

Supporting Information

Total Synthesis of $[\beta\text{-Hlle}]^2$ -nodupetide: effect of ester to amide substitution on its antimicrobial activity

Harra Ismi Farah,^{ac} Unang Supratman,^{abc} Ace Tatang Hidayat,^{abc} and Rani Maharani ^{*abc}

^{a.} Department of Chemistry, Faculty of Mathematics and Natural Science, Universitas Padjadjaran, Jatinangor, West Java, Indonesia, E-mail: r.maharani@unpad.ac.id

^{b.} Central Laboratory, Universitas Padjadjaran, Jalan Raya Bandung-Sumedang KM 21, Jatinangor 45363, West Java, Indonesia

^{c.} Pharmacy Faculty, Universitas Mulawarman, Samarinda 75242, East Kalimantan, Indonesia

Table of Contents

Figure 1	Chromatogram of analytical RP-HPLC of linear $[\beta\text{-Hlle}]^2$ -nodupetide 9 .	2
Figure 2	Mass spectrum of linear $[\beta\text{-Hlle}]^2$ -nodupetide 9 .	2
Figure 3	¹ H-NMR (500 MHz) spectrum of linear $[\beta\text{-Hlle}]^2$ -nodupetide 9 in CD ₃ OD.	3
Figure 4	¹³ C-NMR (125 MHz) spectrum of $[\beta\text{-Hlle}]^2$ -nodupetide 9 in CD ₃ OD.	3
Figure 5	Chromatogram of analytical RP-HPLC of $[\beta\text{-hile}]^2$ -nodupetide 2 .	4
Figure 6	Mass spectrum of $[\beta\text{-Hlle}]^2$ -nodupetide 2 .	4
Figure 7	¹ H-NMR (500 MHz) spectrum of $[\beta\text{-Hlle}]^2$ -nodupetide 2 in CD ₃ OD.	5
Figure 8	¹³ C-NMR (125 MHz) $[\beta\text{-Hlle}]^2$ -nodupetide 2 in CD ₃ OD.	5

[β -Hile]²-nodupetide linear **9** (synthesis on solid-phase)

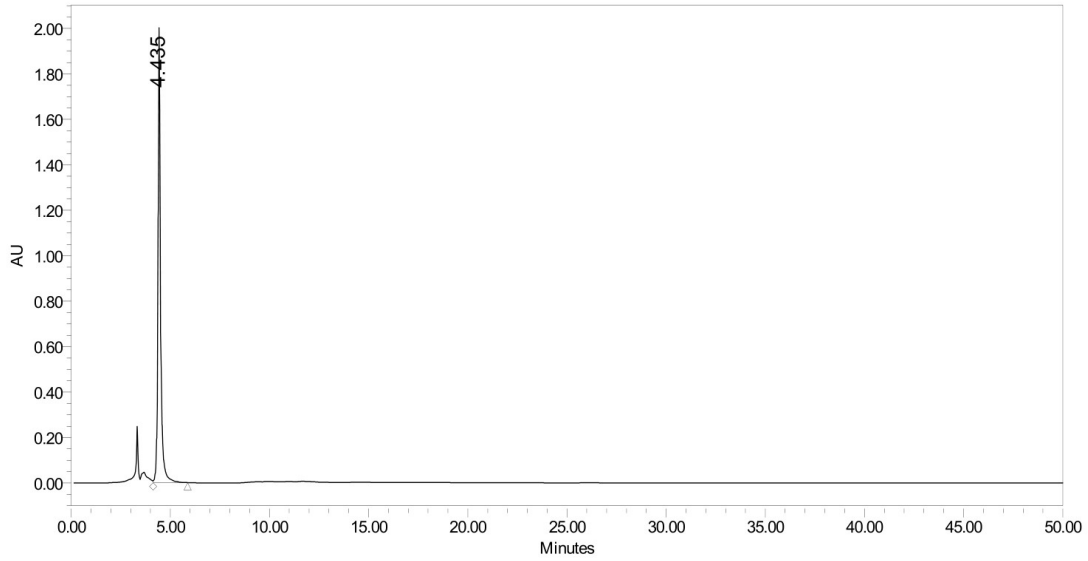


Figure 1 Chromatogram of analytical RP-HPLC of linear [β -Hile]²-nodupetide **9**.

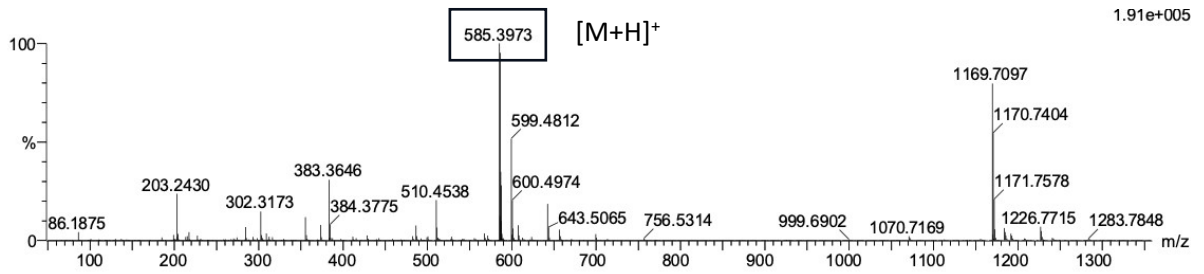


Figure 2 Mass spectrum of linear [β -Hile]²-Nodupetide **9**.

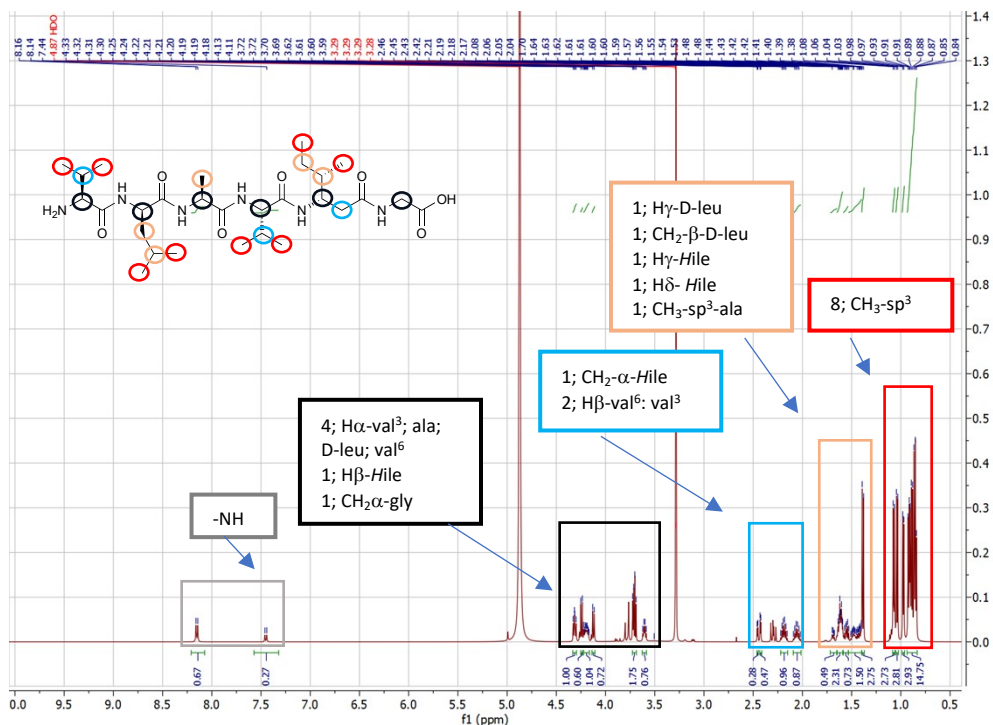


Figure 3 $^1\text{H-NMR}$ (500 MHz) spectrum of linear $[\beta\text{-Hile}]^2\text{-Nodupetide 9}$ in CD_3OD .

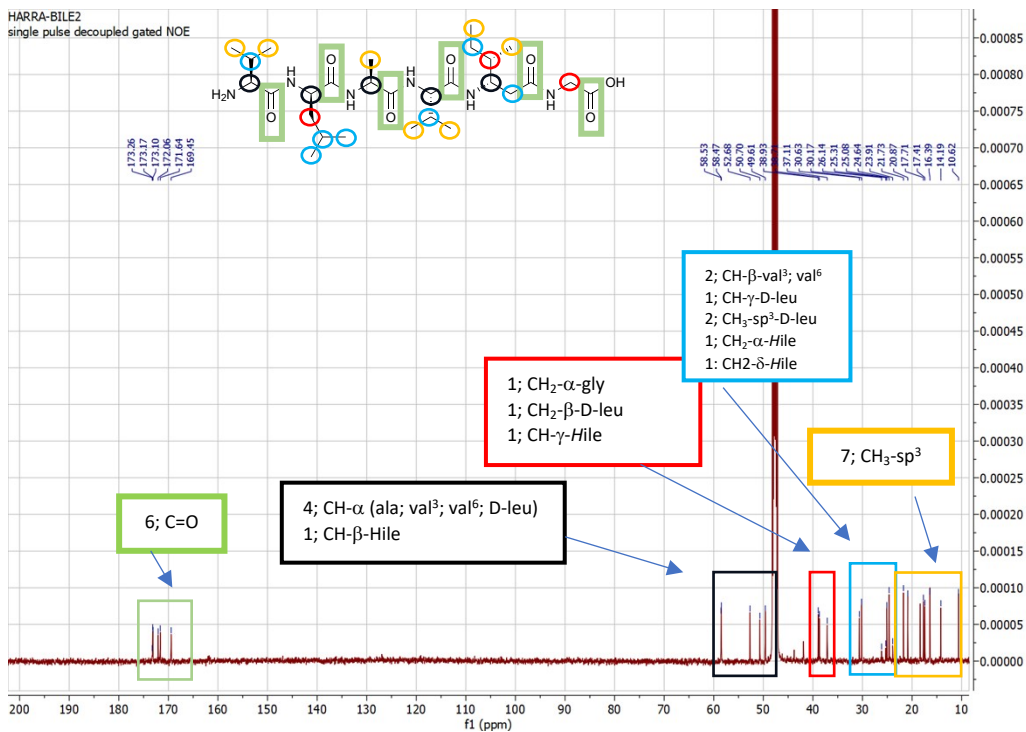


Figure 4 $^{13}\text{C-NMR}$ (125 MHz) spectrum of $[\beta\text{-Hile}]^2\text{-Nodupetide 9}$ in CD_3OD .

[β -Hlle]²-nodupetide 2

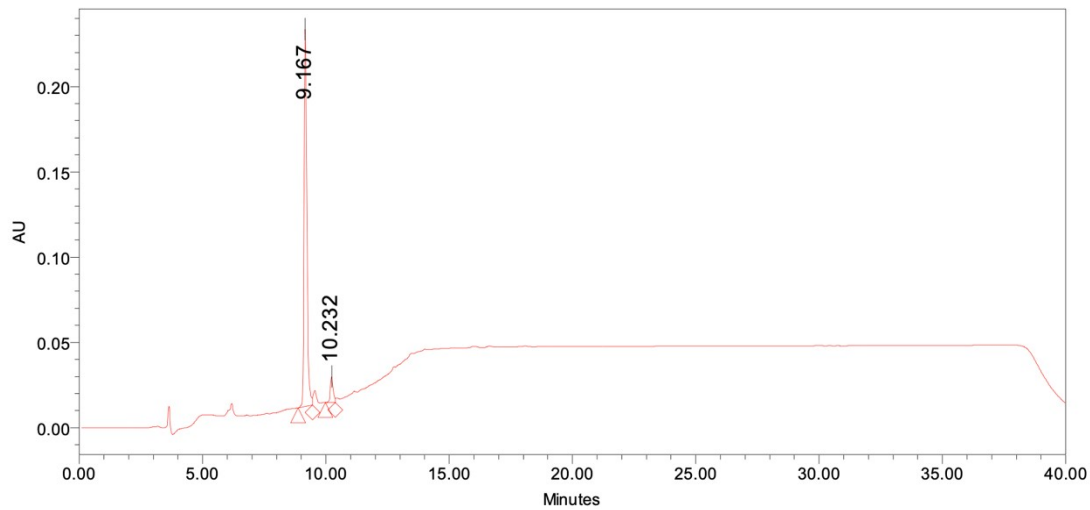


Figure 5 Chromatogram of analytical RP-HPLC of [β -Hlle]²-nodupetide 2.

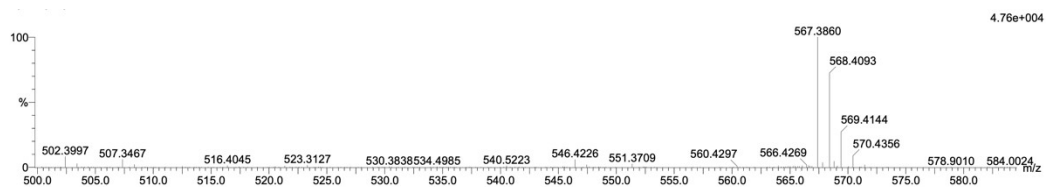


Figure 6 Mass spectrum of [β -Hlle]²-nodupetide 2.

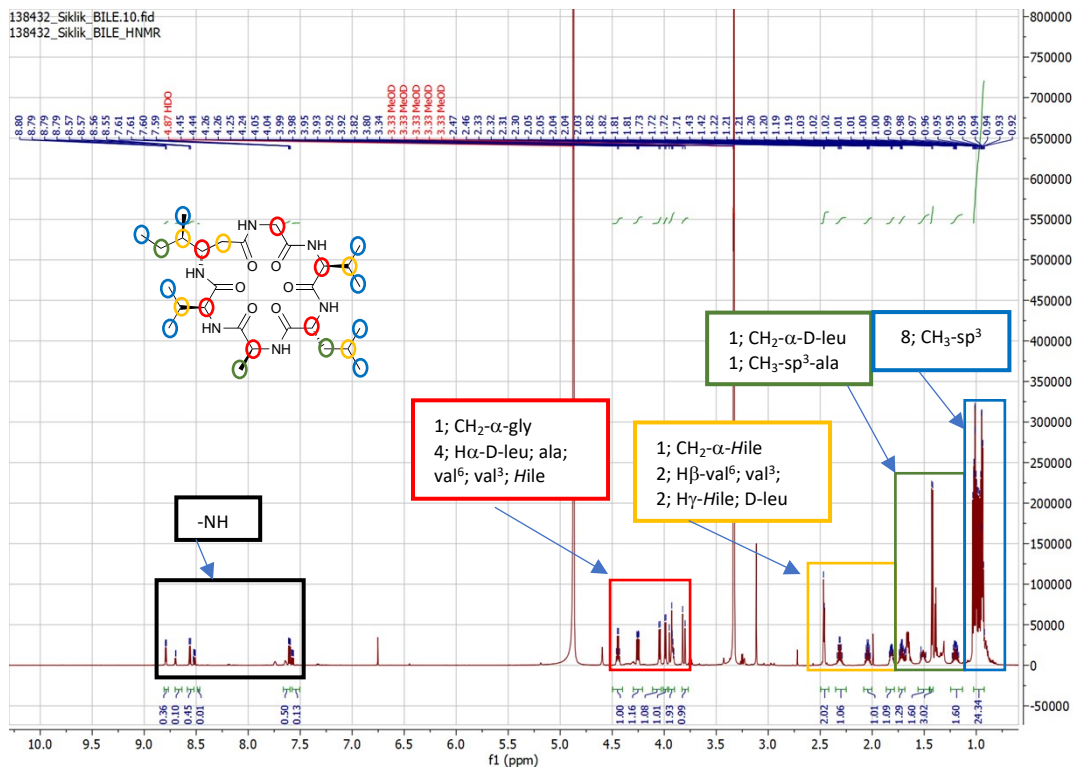


Figure 7 $^1\text{H-NMR}$ (500 MHz) spectrum of $[\beta\text{-Hile}]_2\text{-nodupetide } 2$ in CD_3OD .

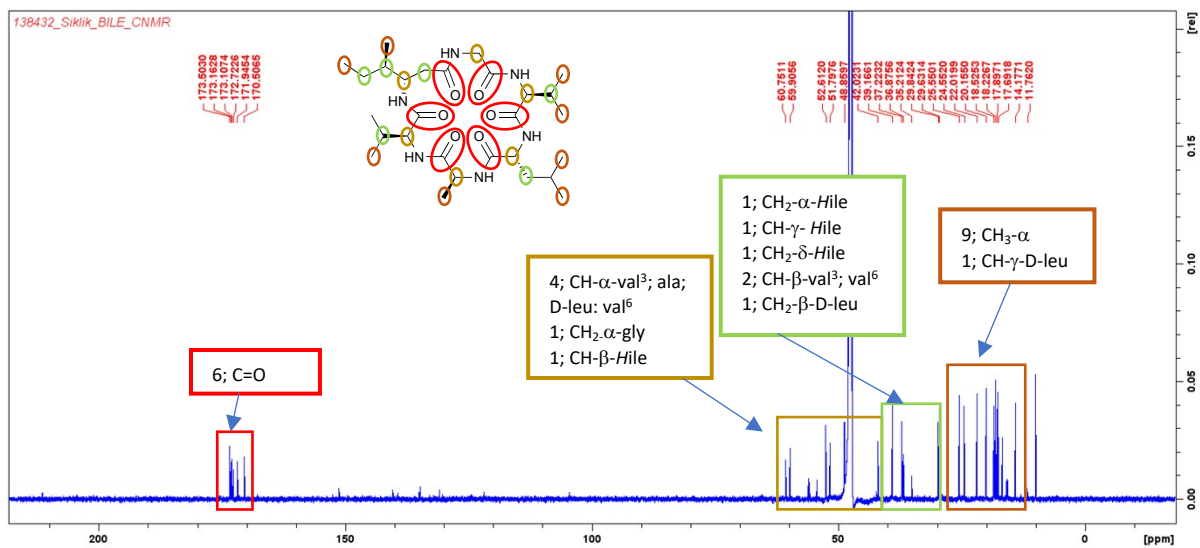


Figure 8 $^{13}\text{C-NMR}$ (125 MHz) $[\beta\text{-Hile}]_2\text{-nodupetide } 2$ in CD_3OD .

