

Supplementary

Effects of Alcohols as Sacrificial Reagents on A Copper-doped Sodium Dtitanate Nanosheets/Graphene Oxide Photocatalyst in CO₂ Photoreduction

Nutkamol Kitjanukit¹, Wannisa Neamsung¹, Apisit Karawek¹, Napat Lertthanaphol¹, Napatr Chongkol, Koki Hiramatsu², Tomoya Sekiguchi², Soraya Pornsuwan³, Takahiro Sakurai⁴, Woranart Jonglertjunya¹, Poomiwat Phadungbut¹, Yuichi Ichihashi², and Sira Srinives^{1}*

¹ Nanocomposite Engineering Laboratory (NanoCEN), Department of Chemical Engineering, Faculty of Engineering, Mahidol University, Nakhon Pathom, 73170, Thailand.

² Department of Chemical Science and Engineering, Graduate School of Engineering, Kobe University, Rokkodaicho 1-1, Nada, Kobe, 657-8501, Japan

³ Department of Chemistry, Faculty of Science and Center of Excellence for Innovation in Chemistry, Mahidol University, Bangkok, 10400, Thailand

⁴ Research Facility Center for Science and Technology, Kobe University, Rokkodai 1-1, Nada, Kobe, 657-8501, Japan

* Corresponding author Sira Srinives, Email: sira.sri@mahidol.ac.th: Tel + 66 846482406 (Thailand)

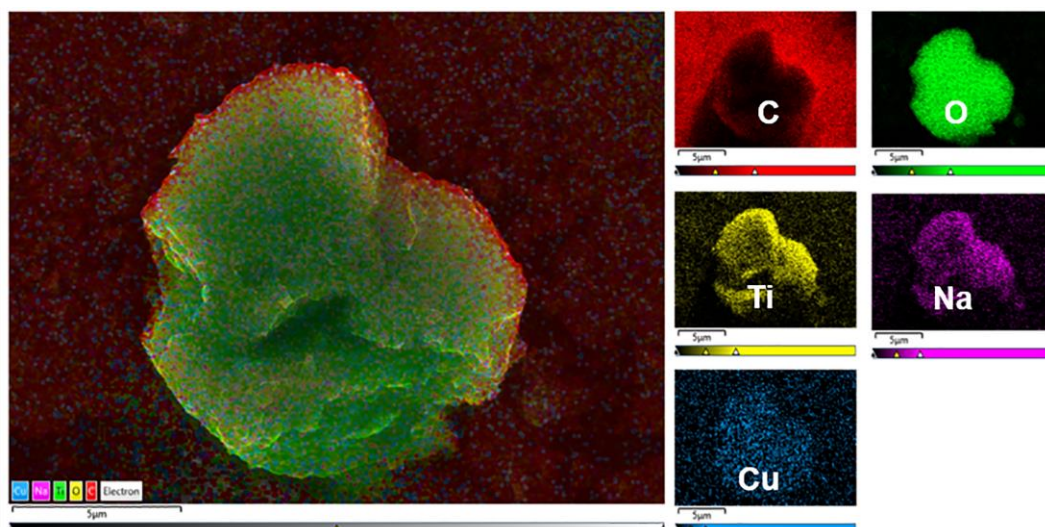


Fig. S1 EDS scan of CTGN, showing atomic composition.

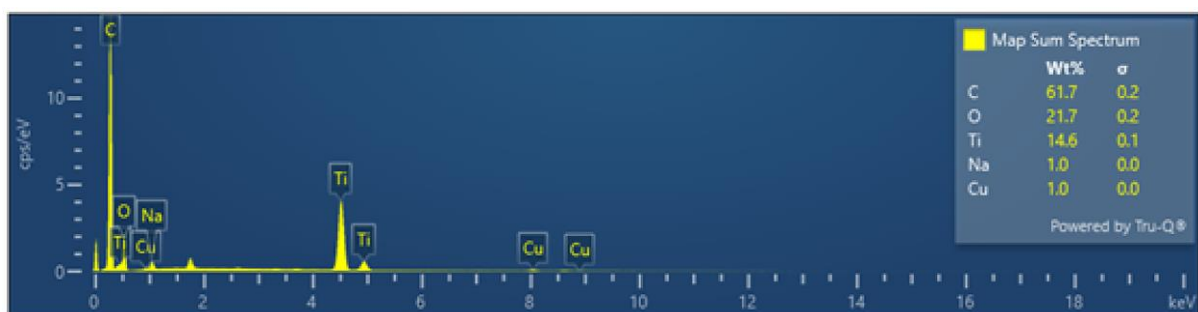


Fig. S2 Percentage of CTGN atomic composition.

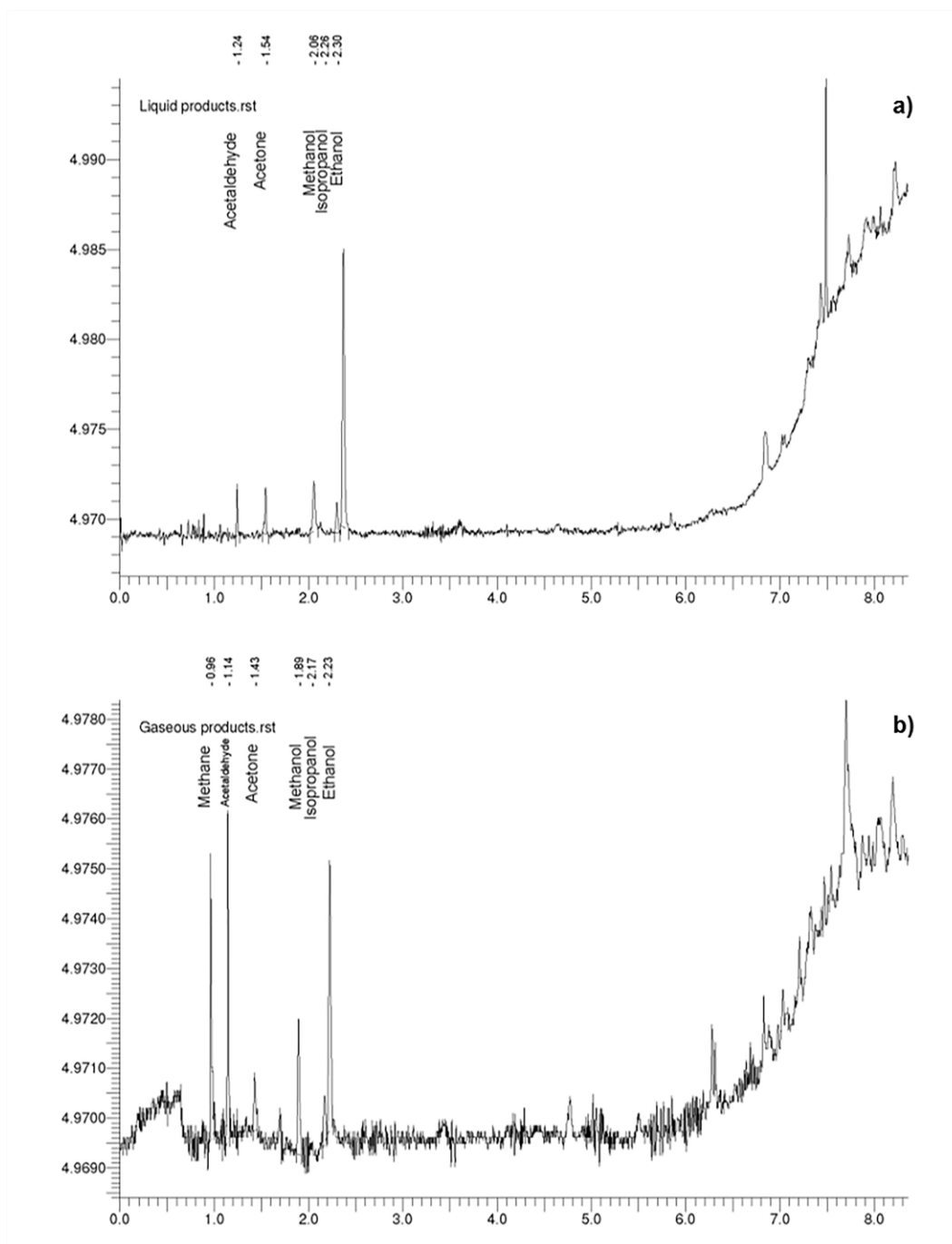


Fig. S3 Example of a gas chromatography analysis of (a) liquid and (b) gaseous products.

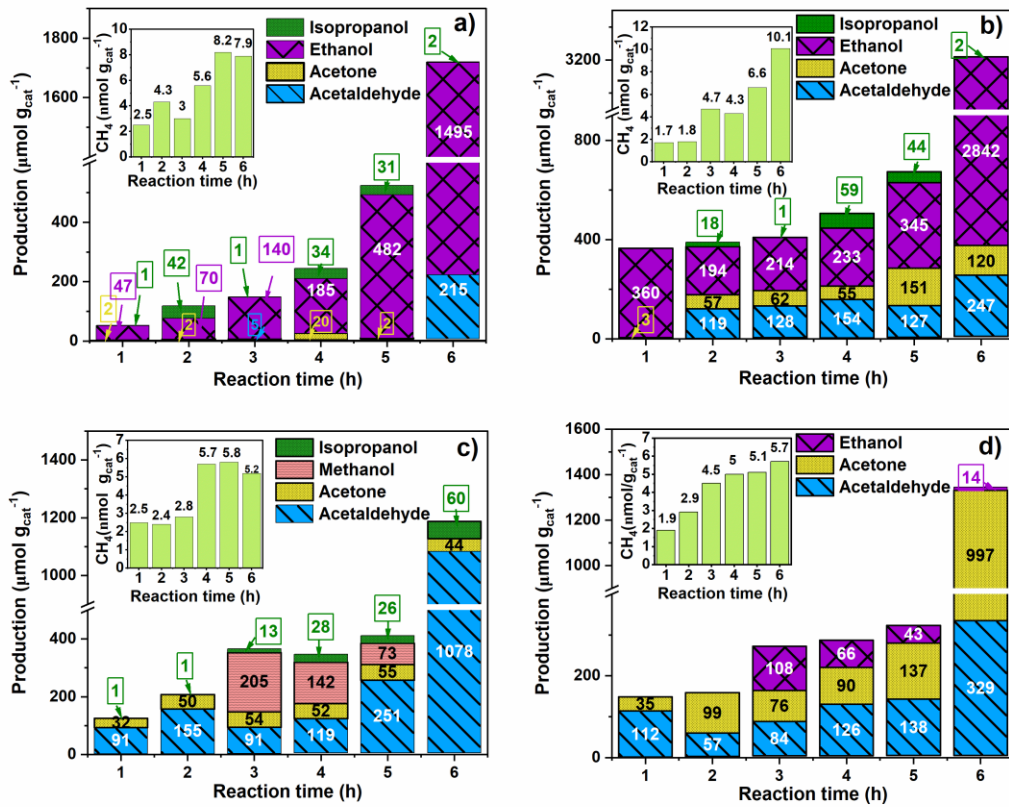


Fig. S4 Effect of reaction time on each liquid and gas product corresponded to (a) water, (b) methanol, (c) ethanol, and (d) isopropanol SCRs.

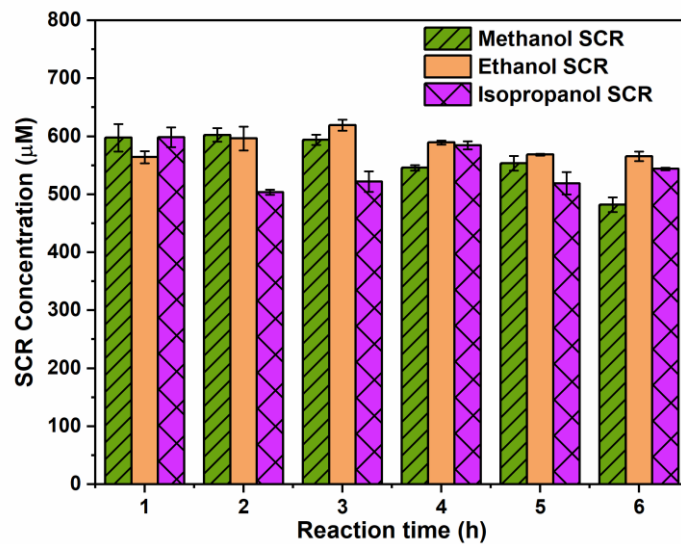


Fig. S5 SCR concentration changes concerning the time of CO₂ photoreduction operation.

List S1 Lists of total reaction equations for the formation of methane, methanol, ethanol, acetaldehyde, isopropanol, and acetone.

